

APPPIA



A Dining and Bedroom
Collection.

Appia Collection



ITALIA



APPPIA

For the Appia Collection, we embraced soft curves and warm, tactile finishes to create a sense of understated elegance. All elements, from the dining area to the bedroom, are crafted in a combination of Matte Espresso and Termocotto Oak, enriched by gently rounded sides and refined bronze handles.

The collection features two table options, two chair options, and many pieces are available in different sizes.

The Appia Collection is set in a contemporary home in Trieste, a city shaped by cultural intersections and coastal light. With its blend of modern interiors and historic architectural details, the setting highlights the collection's balance of craftsmanship, warmth, and quiet modernity.

APPRIA



POSED
CURATED
SCULPTURAL

DINING ROOM



Appia dining room set, Trieste interior



The Appia table stands on a sculptural dark metal base, topped in Termocotto Oak. Its paired chair mirrors the table's soft lines: light, curved, and elegant, offering a contemporary take on quiet dining sophistication.



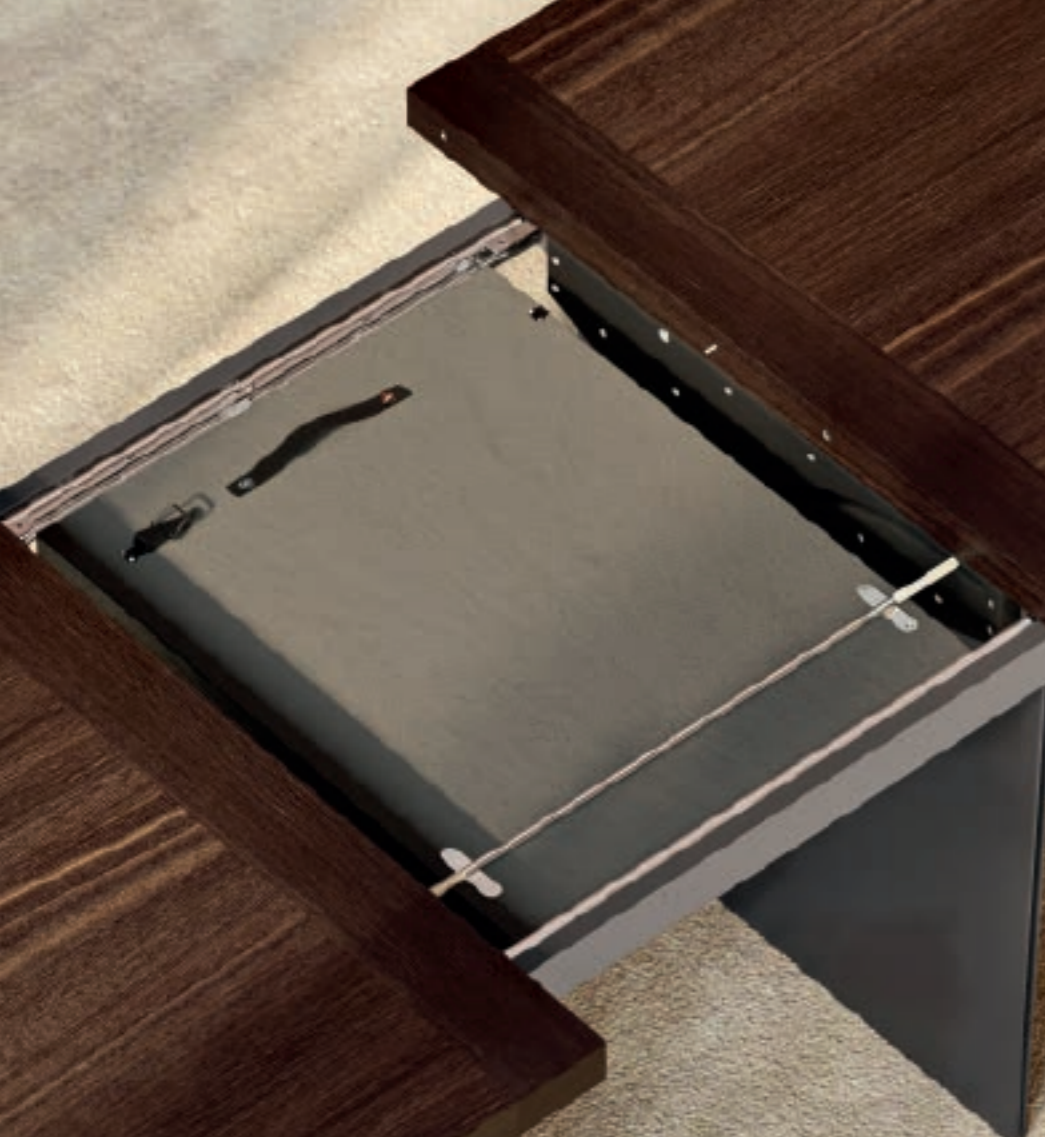
Appia chair, Trieste interior

La mesa Appia se apoya sobre una base escultural de metal oscuro, rematada en roble Termocotto. Su silla a juego refleja las suaves líneas de la mesa: ligera, curvada y elegante, ofrece una versión contemporánea de la sofisticación tranquila en el comedor.

La table Appia repose sur un piètement sculptural en métal foncé, recouvert de chêne Termocotto. Sa chaise assortie reprend les lignes douces de la table: légère, incurvée et élégante, elle offre une version contemporaine du raffinement discret des repas.

Стол Appia стоит на скульптурной темной металлической основе, покрытой термокоттовым дубом. Его парные стулья повторяют мягкие линии стола: легкие, изогнутые и элегантные, предлагая современный взгляд на утонченность тихого ужина.





Appia table, Trieste interior



The extendible Appia table features a seamless butterfly-leaf mechanism: pull the tabletop apart and the hidden oak leaf unfolds from beneath, expanding the surface in seconds. Elegant, effortless, and ideal for versatile dining settings.

La mesa extensible Appia cuenta con un mecanismo de alas de mariposa sin fisuras: tire de la superficie de la mesa y la hoja de roble oculta se despliega desde abajo, ampliando la superficie en cuestión de segundos. Elegante, sencilla e ideal para comedores versátiles.

La table extensible Appia est dotée d'un mécanisme à rallonge papillon sans soudure : tirez sur le plateau et la rallonge en chêne cachée se déploie, agrandissant la surface en quelques secondes. Élégante, facile à utiliser et idéale pour des repas variés.

Раздвижной стол Appia оснащен бесшовным механизмом «бабочка»: раздвиньте столешницу, и скрытый дубовый лист развернется из-под нее, увеличив поверхность за считанные секунды. Элегантный, удобный и идеально подходящий для различных обеденных зон.





Cornelio table, Fabia chair, Trieste interior

Entirely crafted in Termocotto Oak, the Cornelio table emphasizes natural warmth and presence. Its generous form is matched with the substantial, enveloping Fabia chair that invites comfort, anchoring the room with tactile elegance and depth.



Fabia chair, Trieste interior

Fabricada íntegramente en roble Termocotto, la mesa Cornelio destaca por su calidez y presencia naturales. Su generosa forma combina a la perfección con la silla Fabia, sólida y envolvente, que invita al confort y aporta elegancia y profundidad al espacio.

Entièrement fabriquée en chêne Termocotto, la table Cornelio met en valeur la chaleur et la présence naturelles. Sa forme généreuse s'harmonise avec la chaise Fabia, imposante et enveloppante, qui invite au confort et ancre la pièce avec une élégance tactile et une profondeur.

Стол Cornelio, полностью изготовленный из термокоттового дуба, подчеркивает естественную теплоту и присутствие. Его щедрые формы сочетаются с массивным, обволакивающим стулом Fabia, который приглашает к комфорту, придавая комнате тактильную элегантность и глубину.







Appia buffet, Trieste interior

Available with three or four doors, the Appia buffet features clean lines and generous volume. The four-door version includes an internal drawer, ideal for cutlery or small items, combining function with refined elegance.

Disponibile con tres o cuatro puertas, el aparador Appia destaca por sus líneas limpias y su generoso volumen. La versión de cuatro puertas incluye un cajón interior, ideal para cubiertos u objetos pequeños, combinando funcionalidad con una elegancia refinada.

Disponibile en version trois ou quatre portes, le buffet Appia se caractérise par ses lignes épurées et son volume généreux. La version quatre portes comprend un tiroir interne, idéal pour ranger les couverts ou les petits objets, alliant fonctionnalité et élégance raffinée.

Буфет Appia, доступный с тремя или четырьмя дверцами, отличается чистыми линиями и большим объемом. Четырехдверная версия включает внутренний ящик, идеально подходящий для столовых приборов или мелких предметов, сочетая функциональность с изысканной элегантностью.





With its slender frame, bronze glass doors, and sculptural bronze handles, the Appia curio cabinet offers a quiet stage for treasured objects, pairing transparency and warmth in a design that feels both grounded and weightless.

Con su estructura esbelta, puertas de cristal bronce y tiradores esculturales de bronce, el mueble vitrina Appia ofrece un escenario discreto para objetos preciados, combinando transparencia y calidez en un diseño que transmite solidez y ligereza a la vez.

Avec son cadre élancé, ses portes en verre bronze et ses poignées sculpturales en bronze, le meuble vitrine Appia offre un écrin discret pour vos objets précieux, alliant transparence et chaleur dans un design à la fois solide et aérien.

С его изящной рамой, бронзовыми стеклянными дверцами и скульптурными бронзовыми ручками, шкаф для ценных предметов Appia создает спокойную обстановку для хранения ценных предметов, сочетая прозрачность и теплоту в дизайне, который выглядит одновременно устойчивым и невесомым.



LIVING ROOM



Appia living room set, Trieste interior



The Appia TV base pairs three closed compartments with an open shelving, offering both storage and display with refined simplicity. The matching coffee table echoes its soft curves and warm finishes, bringing harmony to the living area.



Appia TV base, Trieste interior

La base Appia TV combina tres compartimentos cerrados con una estantería abierta, ofreciendo tanto espacio de almacenamiento como exposición con una refinada simplicidad. La mesa de centro a juego repite sus suaves curvas y cálidos acabados, aportando armonía a la sala de estar.

Le meuble TV Appia associe trois compartiments fermés à une étagère ouverte, offrant à la fois rangement et présentation avec une simplicité raffinée. La table basse assortie reprend ses courbes douces et ses finitions chaleureuses, apportant une touche d'harmonie au salon.

Тумба Appia TV сочетает в себе три закрытых отсека и открытую полку, предлагая как место для хранения, так и для демонстрации предметов с изысканной простотой. Соответствующий кофейный столик повторяет ее мягкие изгибы и теплые отделки, придавая гармонию гостиной.



BEDROOM



Appia bedroom set, Trieste interior



The Appia bed pairs warm finishes with a softly padded headboard, its subtle curves and tailored details evoking quiet luxury. Two nightstand sizes complete the setting, echoing the bed's gentle lines while offering flexible functionality.

La cama Appia combina acabados cálidos con un cabecero suavemente acolchado, cuyas sutiles curvas y detalles a medida evocan un lujo discreto. Dos tamaños de mesitas de noche completan el conjunto, reflejando las suaves líneas de la cama y ofreciendo una funcionalidad flexible.

Le lit Appia associe des finitions chaleureuses à une tête de lit légèrement rembourrée, dont les courbes subtiles et les détails sur mesure évoquent un luxe discret. Deux tables de chevet de tailles différentes complètent l'ensemble, reprenant les lignes douces du lit tout en offrant une fonctionnalité flexible.

Кровать Appia сочетает в себе теплые отделочные материалы и мягко обитую изголовье, а ее изящные изгибы и тщательно проработанные детали создают атмосферу спокойной роскоши. Две тумбочки разных размеров дополняют обстановку, повторяя плавные линии кровати и предлагая гибкую функциональность.



The headboard lights switch on with a practical, subtle touch switch





Appia drawer chest and dresser, Trieste interior

The Appia dresser, available in two sizes, offers a balanced mix of modern design and refined craftsmanship. Its rounded edges and elegant detailing enhance the warm finish with a quiet, sophisticated presence.

La cómoda Appia, disponible en dos tamaños, ofrece una combinación equilibrada de diseño moderno y artesanía refinada.

Sus bordes redondeados y sus elegantes detalles realzan el acabado cálido con un estilo tranquilo y sofisticado.

La commode Appia, disponible en deux tailles, offre un mélange équilibré entre design moderne et savoir-faire raffiné. Ses bords arrondis et ses détails élégants rehaussent la finition chaleureuse avec une touche discrète et sophistiquée.

Комод Appia, доступный в двух размерах, представляет собой гармоничное сочетание современного дизайна и изысканного мастерства. Его закругленные края и элегантные детали подчеркивают теплую отделку, создавая спокойную и утонченную атмосферу.









The Appia wardrobes feature doors available entirely in Termocotto Oak or in a combination of wood and mirror. Inside, built-in drawers and refined compartments offer seamless storage with a quiet sense of sophistication.

Los armarios Appia cuentan con puertas disponibles íntegramente en roble Termocotto o en una combinación de madera y espejo. En el interior, los cajones empotrados y los refinados compartimentos ofrecen un almacenamiento perfecto con una discreta sensación de sofisticación.

Les armoires Appia sont dotées de portes disponibles entièrement en chêne Termocotto ou dans une combinaison de bois et de miroir. À l'intérieur, des tiroirs intégrés et des compartiments raffinés offrent un rangement harmonieux avec une touche de sophistication discrète.

Шкафы Appia оснащены дверцами, выполненными полностью из термокоттового дуба или в комбинации дерева и зеркала. Внутри встроенные ящики и изысканные отделения обеспечивают удобное хранение вещей и создают ощущение утонченной элегантности.

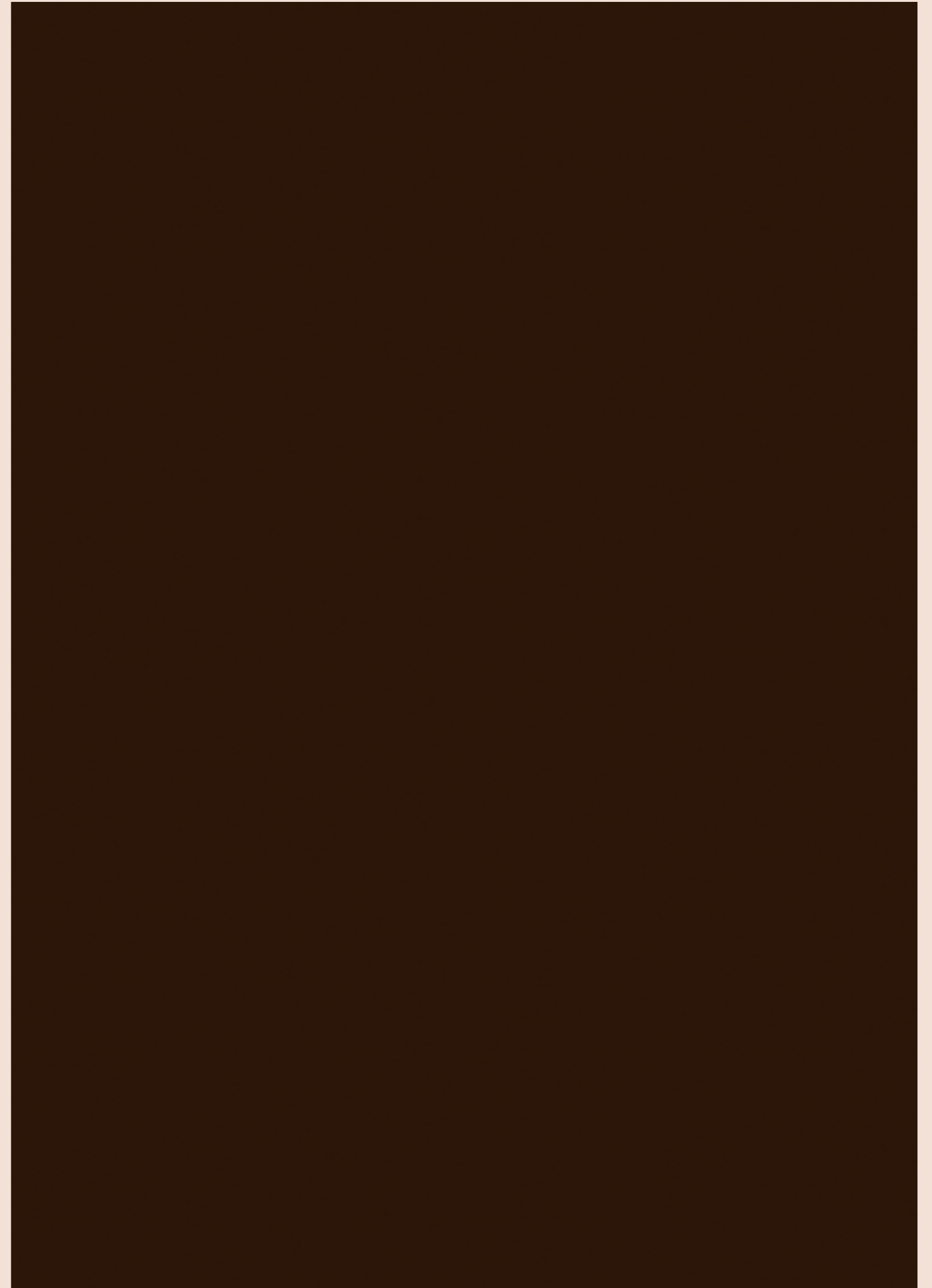


Appia wardrobe, Trieste interior

TERMOCOTTO OAK



MATTE ESPRESSO



FINISHES

APPIA DINING ROOM IN TERMOCOTTO OAK / MATTE ESPRESSO



4/D BUFFET PJAP0610
With 4 doors

inch	W 83"	D 20"	H 32"
cm	L 209,5	P 50,25	H 81
Crts	2	kg 128	m ³ 1,08

3/D BUFFET KJAP612
With 3 doors

inch	W 64"	D 20"	H 32"
cm	L 162,3	P 50,25	H 81
Crts	1	kg 94	m ³ 0,79



EXTEN. TABLE W250 PJAP0615
With 1 leaf w 21 1/4" cm 54

inch	W 98"	D 43"	H 30"
cm	L 250	P 108	H 77
Crts	3	kg 185	m ³ 0,84

EXTEN. TABLE W210 PJAP0616
With 1 leaf w 19 3/4" cm 50

inch	W 83"	D 37"	H 30"
cm	L 210	P 95	H 77
Crts	3	kg 147	m ³ 0,69



EXTEN. TABLE CORNELIO PJAP0618
With 1 leaf w 21 1/4" cm 54

inch	W 103"	D 43"	H 30"
cm	L 262	P 108	H 76,4
Crts	2	kg 166	m ³ 1,16



2/D CURIO CABINET
US LIGHT KIT PJAP0681
UK LIGHT KIT PJAP0682
EU LIGHT KIT PJAP0680
With 2 glass doors

inch	W 45"	D 17"	H 75"
cm	L 114,4	P 43,5	H 190,8
Crts	3	kg 145	m ³ 1,32

APPIA BEDROOM IN TERMOCOTTO OAK / MATTE ESPRESSO



DRESSER W177 KJAP125

With 6 drawers			
inch	W 70"	D 20"	H 32"
cm	L 177,6	P 50,25	H 81
Crts	1	kg 106	m ³ 0,86

DRESSER W150 KJAP126

With 6 drawers			
inch	W 59"	D 20"	H 32"
cm	L 150	P 50,25	H 81
Crts	1	kg 94	m ³ 0,73



NIGHT STAND W79 KJAP130

With 2 drawers			
inch	W 31"	D 18"	H 22"
cm	L 79	P 45,25	H 56,5
Crts	1	kg 39	m ³ 0,26

NIGHT STAND W55 KJAP131

With 2 drawers			
inch	W 22"	D 19"	H 23"
cm	L 55	P 47,25	H 59
Crts	1	kg 33	m ³ 0,2



5/DRW. CHEST KJAP117

With 5 drawers			
inch	W 39"	D 20"	H 51"
cm	L 98,7	P 50,25	H 130
Crts	1	kg 100	m ³ 0,77



MIRROR KJAP140

inch	W 39"	D 1"	H 42"
cm	L 100	P 2,5	H 106,7
Crts	1	kg 25	m ³ 0,08



MIRROR KJAP140

inch	W 39"	D 1"	H 42"
cm	L 100	P 2,5	H 106,7
Crts	1	kg 25	m ³ 0,08



2 APPIA CHAIRS KJAP620

2 APPIA CHAIRS (UK FIRE RETARDANT) KJAP6201

With termocotto oak structure, seat and back in ecoleather

inch	W 19"	D 21"	H 38"
cm	L 49	P 53	H 96
Crts	1	kg 15	m ³ 0,44



2 FABIA CHAIRS KJAP622

2 FABIA CHAIRS (UK FIRE RETARDANT) KJAP6221

With termocotto oak structure, seat and back in fabric

inch	W 20"	D 21"	H 33"
cm	L 52	P 54	H 83
Crts	1	kg 22	m ³ 0,44



Q.S./UK 5" BED PJAP0150 (UK FIRE RETARDANT) PJAP1501
Inner size inch 61" x 80 3/4" - cm 155 x 205
inch W 64" D 84" H 51"
cm L 163 P 212 H 128,2
Crts 2 kg 98 m³ 0,36

K.S./UK 6.6" BED PJAP0175

Inner size inch 76 3/4" x 80 3/4" - cm 195 x 205
inch W 80" D 84" H 51"
cm L 203 P 212 H 128,2
Crts 2 kg 127 m³ 0,40

180 BED PJAP0202

Inner size inch 71" x 79" - cm 180,5 x 200,5
inch W 74" D 82" H 51"
cm L 188,5 P 207,5 H 128,2
Crts 2 kg 107 m³ 0,53

US BED LIGHT KIT KJKT046
Crts 1 kg 2 m³ 0,1

UK BED LIGHT KIT KJKT047
Crts 1 kg 2 m³ 0,1

EU BED LIGHT KIT KJKT045
Crts 1 kg 2 m³ 0,1

UK 6" BED (UK FIRE RETARDANT) PJAP01941
Inner size inch 73 1/2" x 80 3/4" - cm 187 x 205
inch W 77" D 84" H 51"
cm L 195 P 212 H 128,2
Crts 2 kg 112 m³ 0,55



TV BASE KJAP630

inch	W 84"	D 17"	H 24"
cm	L 212	P 43	H 61
Crts	1	kg 90	m ³ 0,71

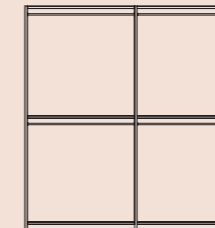


RECTANGULAR TABLE KJAP627

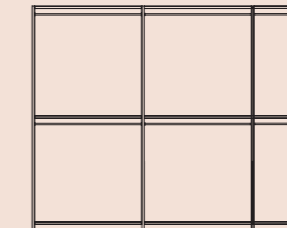
inch	W 50"	D 30"	H 17"
cm	L 127	P 76	H 42,5
Crts	1	kg 57	m ³ 0,54



4/D SWINGING WARDROBE (wooden doors) PJAP0013 (with 2 central mirrors) PJAP0014
With 4 doors, 2 shelves and 4 hanging rods
inch W 78" D 25" H 90"
cm L 197,3 P 63,45 H 227,5
Crts 8 kg 210/232* m³ 0,65/0,66*



6/D SWINGING WARDROBE (wooden doors) PJAP0017 (with 2 mirrors) PJAP0018
With 6 doors, 3 shelves and 6 hanging rods
inch W 116" D 25" H 90"
cm L 295 P 63,45 H 227,5
Crts 10 kg 304/326* m³ 0,87/0,88*



3/D WOOD DRAWER UNIT KJMM025
With 3 drawers

inch	W 37"	D 19"	H 25"
cm	L 95,1	P 49,2	H 62,7
Crts	1	kg 34	m ³ 0,39



* indicate weight and volume of wardrobe with mirrors.

OUR STORY
OUR PEOPLE
OUR VALUES

MISSION MADE IN ITALY



For 70 years we have been bringing the values of Made in Italy to the world. An uncompromising choice, based on love for our territory: Italy is the cradle of design, attention to detail, and artisanal know-how. Aware of this heritage, every day we draw inspiration from what surrounds us and we translate it into our collections with one objective: to be worthy ambassadors of Made in Italy in the world.

VALUES



FAMILY INNOVATION COMMUNITY

Family, community, and innovation serve as the cornerstone of our daily endeavors.

Within each Alf Italia product, you'll discover distinct personalities shaping its essence: the warmth of Oliviero, the unwavering determination of Cristina, and the bold courage of Piero. These individuals embody your commitment to consistency, reliability, and the bonds of friendship.

Our roots run deep in the rich soil of our native places, acknowledging the invaluable contributions of the skilled artisans in woodworking and the fervent dedication of the people of Francenigo. Without their passion and commitment, our journey would not have been possible. While we honor our past, we set our sights on the future.

Our DNA pulses with an insatiable drive for innovation. Whether introducing unprecedented products or revolutionizing wood processing through technology, we embrace change with a continual desire to push boundaries and pioneer new frontiers.

Alf Italia stands as a testament to tradition, progress, and an unwavering commitment to shaping the future of design and craftsmanship.

A FAMILY TRADITION



Oliviero and Giuditta on a work trip.

In the vibrant landscape of the 1950s, a visionary company emerged, driven by an entrepreneurial spirit eager to seize opportunities in the post-war world. This company, known as Alf Italia, initially set its sights on serving its local community in Francenigo. As the years rolled on, and the world underwent dramatic shifts, the company adapted and evolved.

During the 1980s the company decided to spread its wings beyond Italian borders, embarking on an exciting journey to the United States – the land of the American dream.

But Alf Italia didn't stop there. In the 1990s, it embarked on an even more ambitious venture, conquering new horizons in the Middle East, Central and South America, and Russia.

Its success was attributed to its unique reinterpretation of Italian design for international markets, a fusion of culture and innovation that resonated with people across the globe. In Alf Italia's journey, Giuditta, Oliviero's wife, played a pivotal role with her wisdom, unwavering support, and perceptive guidance. Together, they navigated challenges in

foreign markets, forging crucial cross-border relationships. Giuditta's astuteness and Oliviero's enthusiasm laid the foundation for enduring global partnerships, key to Alf Italia's success.

In the wake of Oliviero's passing, the second generation of the family took the reins. Oliviero's children, Cristina and Piero, assumed leadership roles within the company.

Cristina diligently managed sales and administration, while Piero focused on manufacturing. Flavio, Cristina's husband, played an integral part in the team, contributing his expertise to the areas of design and product planning.

In 2023, Alf Italia achieved a significant milestone by expanding its historic Francenigo site with cutting-edge equipment and automation technology, emphasizing a commitment to innovation and sustainability.

This marks a chapter in Alf Italia's journey, which began in a transformative era and evolved into global expansion, technological advancement, and a legacy of excellence. With the third generation already active in the company, Alf Italia's story continues to be one of innovation and success, with a promising future.



Flavio, Cristina and Piero.

INNOVATION and TECHNOLOGY



We embrace change and believe in our ability to improve day by day.

We invested in technology in the early 2000s, making substantial investments in technological advancements, in Industry 4.0 in the 2010s, and now we are revolutionising the historic Francenigo site, introducing a degree of automation that would once have been unimaginable.

We have moved ahead of the curve with aesthetic trends, introducing furnishing items that can interpret the shapes of the future.

COMMUNITY

We recognize that our local area and community are one of the founding principles behind what we do.

The Piovesana family's roots here go back generations. This fact has played an active part in making ALF Italia a success story, thanks to the commitment of thousands of people who have worked with us over the years.

We live in an area of outstanding natural beauty, where plentiful wood, transported by water and worked thanks to the driving force of the man-made waterways, has created the prerequisites for a woodwork tradition that lives on today in ALF Italia.

"We believe in the dignity of individuals and the value of human relationships."

Our founder, Oliviero Piovesana, taught us: "Every morning must start with a 'Good Morning,' whatever quibbles there may have been the evening before or whatever disagreements may be to come."

That daily greeting encapsulates the value of service: a pleasant, polite approach to recreate a sense of community that transcends professional relationships.





A.L.F. Uno SpA is certified by the ISO 9001:2015.

APPIA

COLLECTION

design
R&D Alf

art direction & graphics
Eleonora Da Frè

digital images
Gabriele Simonetta

selection
LUCE

print
SINCROMIA

Our furniture finishes are mainly UV-based. All our furniture board is within the E1 norm for formaldehyde emission.
By using UV-based finish the formaldehyde is sealed within the furniture board keeping emissions to an absolute minimum.

ATTENTION: PRODUCT APPEARANCE, SIZE, AND/OR MATERIALS MAY BE SUBJECT TO CHANGE WITHOUT NOTICE

