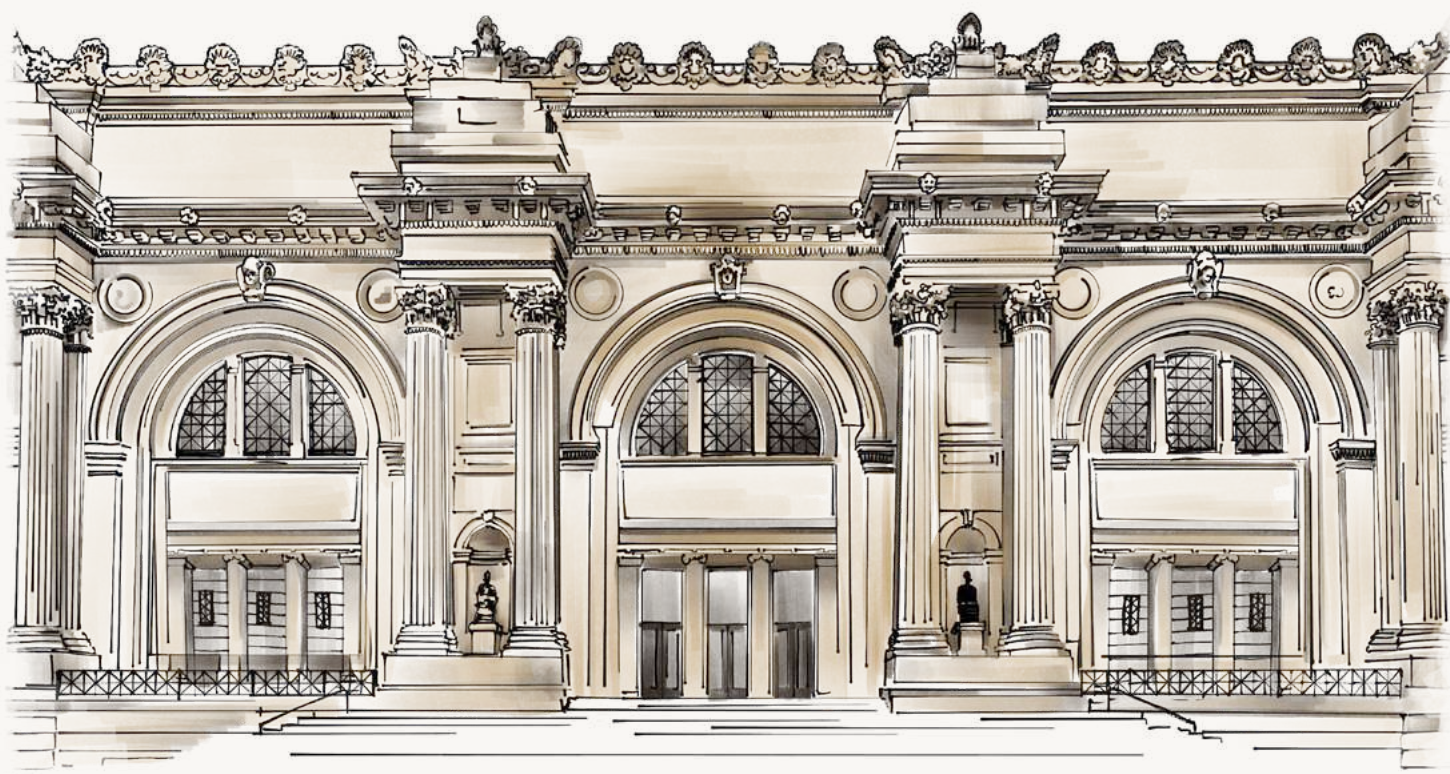
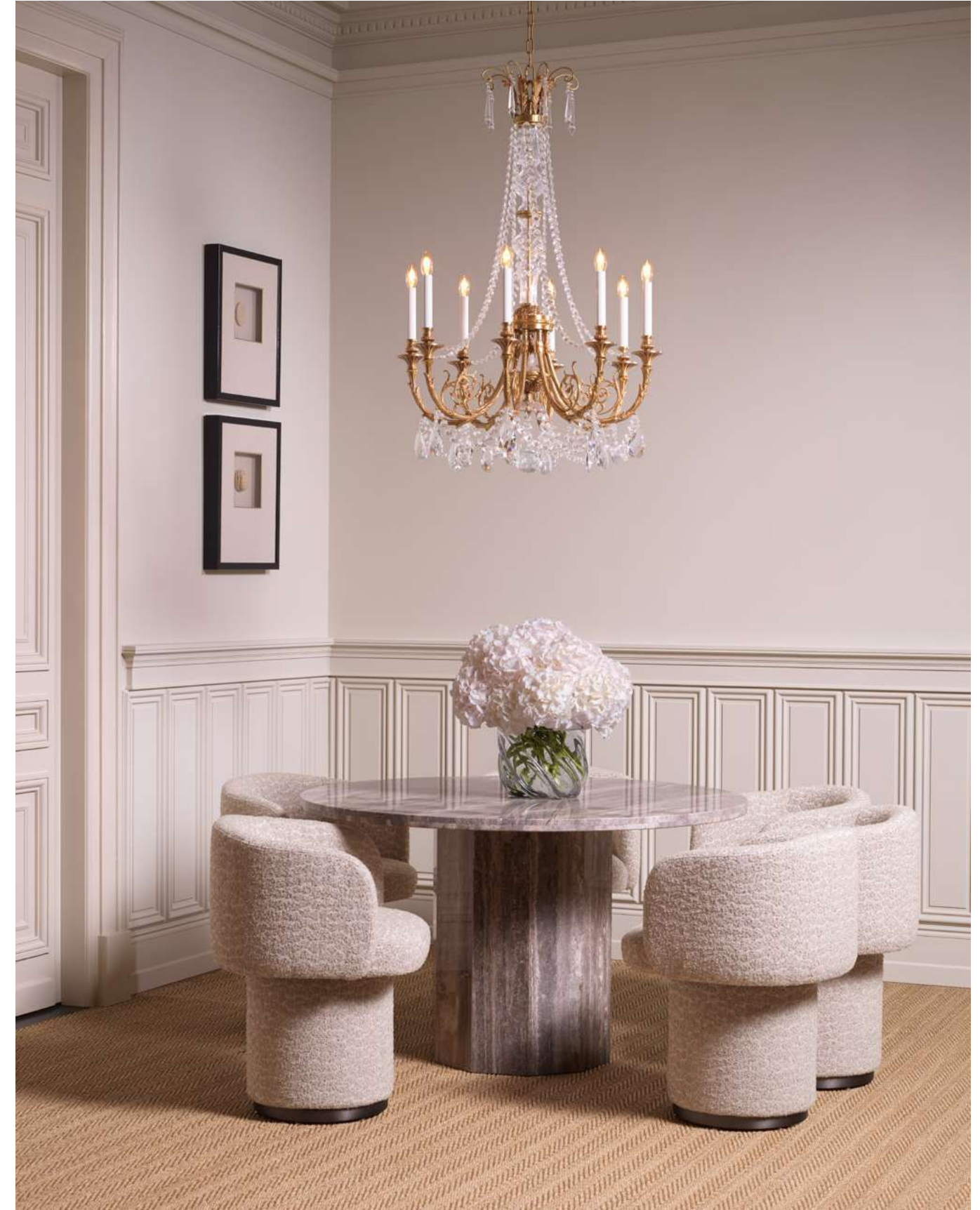


THE MET



E I C H H O L T Z

*proudly presents its third collection in collaboration
with The Metropolitan Museum of Art*



THE
MET

E I C H H O L T Z



A word from The Met

As we celebrate the launch of The Met x Eichholtz Season 3, we reflect on the significance of our continued collaboration — one rooted in a shared dedication to honoring art, culture, and the power of storytelling through design.

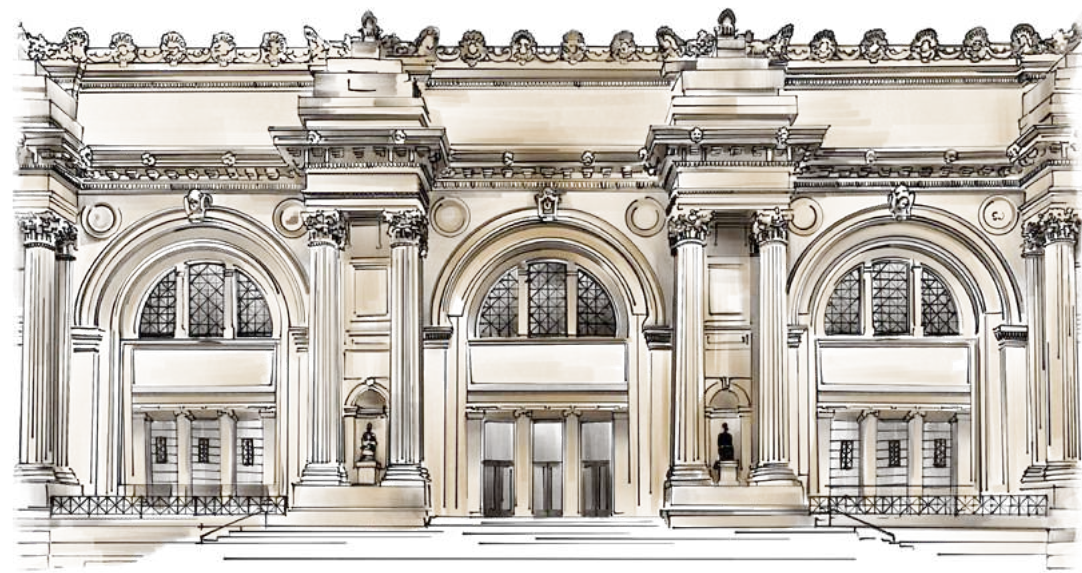
At The Met, our mission is to make art relevant and accessible to the world. This collaboration brings history into everyday spaces, offering customers a rare chance to enjoy art reimagined for the modern home.

We are especially grateful for Eichholtz's ongoing commitment to sharing their unique creative perspective with a global design audience through thoughtful, high-quality reinterpretations of singular works in The Met collection.

We look forward to continuing this journey — connecting history, art, and interiors in ways that feel both timeless and newly inspired.

*The Metropolitan Museum of Art
Licensing & Partnerships*





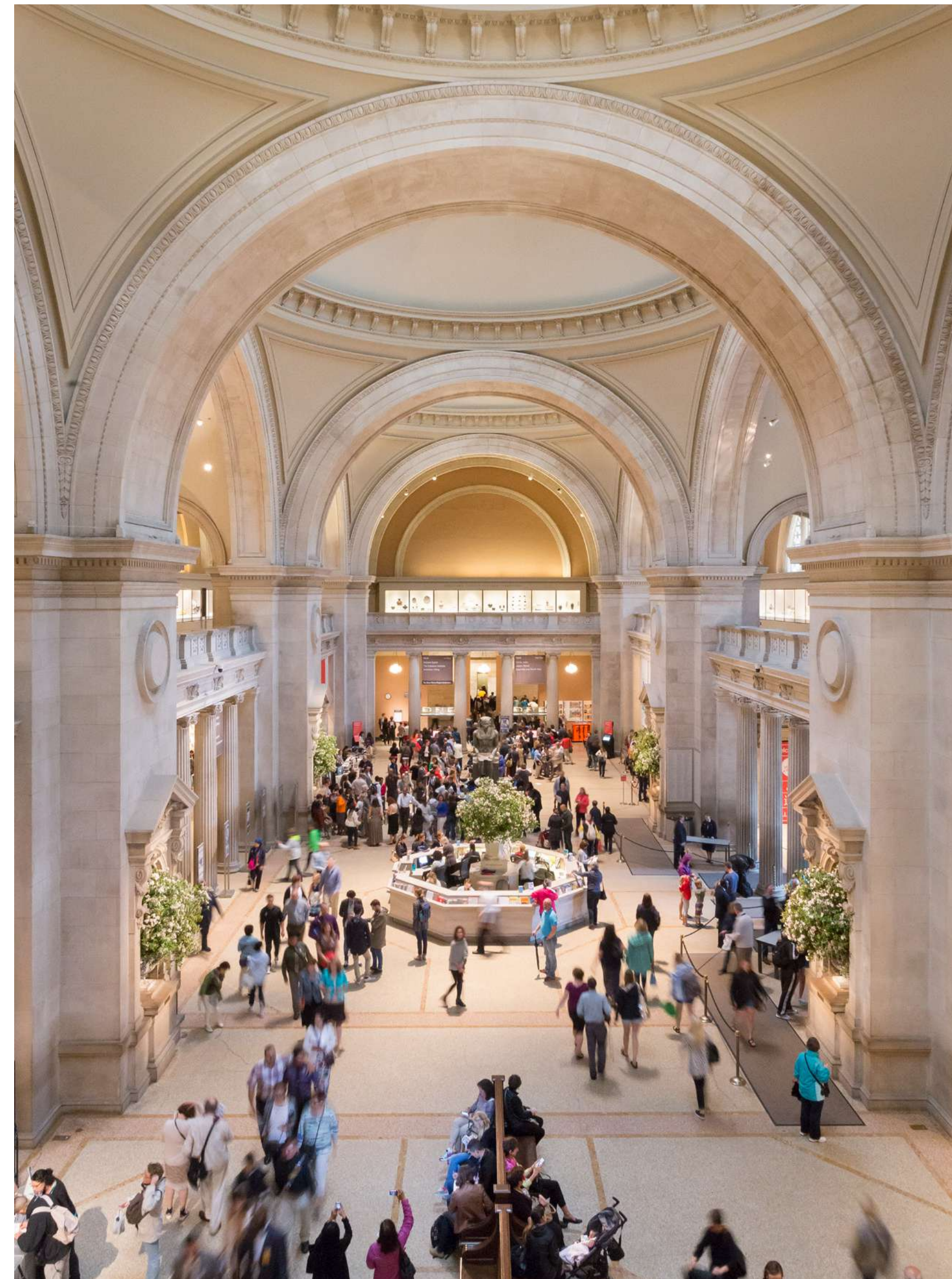
Into the galleries

The ongoing collaboration between Eichholtz and The Metropolitan Museum of Art enters a new chapter — one that deepens the dialogue between history and contemporary design.

This season, new designs embrace a more expressive and interpretive approach, while continuing to draw inspiration from The Met's vast holdings spanning continents, centuries, and cultures. The result is a collection that honors the past while reimagining it for contemporary interiors.

This editorial captures the creative evolution of the collaboration, presenting the full arc from its 2023 global launch to today. Building upon the

foundation of the first two seasons, the 40 new pieces emphasize refined shapes, clean lines, and rich textures, bringing the total offering to almost 200 items. Explore the latest introductions through powerful storytelling and immersive room settings, showcasing standout designs from earlier collections in inventive ways. This dynamic offering is designed to integrate seamlessly with the broader Eichholtz universe, suiting a range of spaces and tastes. With successful launches in Eichholtz stores around the world — from Melbourne, Monaco, and Miami to Los Angeles, Dubai, and New York — the collection has proven both adaptable and resonant for our global network of designers, retailers, and trade clientele.





By reimagining Museum artworks as modern designs, this collection inspires connections between history and contemporary life.





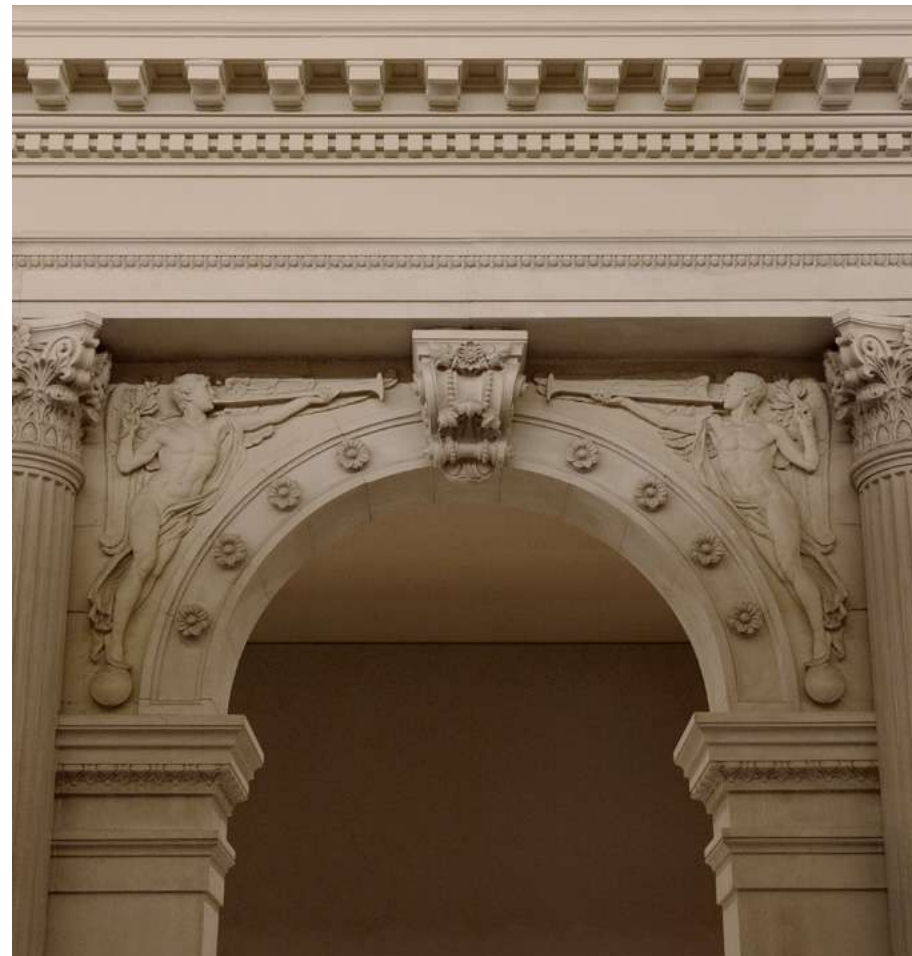
The Chandelier Jenkins is inspired by the hanging pendant lights found throughout The Met's Great Hall, one of the Museum's most visited spaces. Our modern interpretation is a striking piece that blends elegance and functional beauty.







Every Met x Eichholtz design is an invitation to view history through a modern lens.



A conversation with *Leanne Graeff*, General Manager of Product Design; *Stephen Mannello*, Head of Retail and Global Licensing; and *Josh Romm*, Head of Licensing & Partnerships from The Metropolitan Museum of Art.



Eichholtz: How do you see a collaboration like this supporting The Met's broader mission to preserve, educate, and inspire across cultures and generations?

Josh: Since its founding, The Met has always aspired to be more than a treasury of rare and beautiful objects. Every day, art comes alive in the Museum's galleries and through its exhibitions and events, revealing both new ideas and unexpected connections across time and across cultures. Licensing and collaborations allow us to activate that mission far beyond the walls of The Met, sharing highlights from The Met collection through the lens of our brand partners and thus reaching consumers in a whole new way.

Eichholtz: From your perspective, what makes the collaboration with Eichholtz unique?

Stephen: The Met x Eichholtz collection offers consumers a one-of-a-kind opportunity to live with reminders of 5,000 years of art. Juxtaposing furniture and decor inspired by iconic moments in design history like ancient Egypt, Edo-period Japan, and the English Palladian movement with family heirlooms, contemporary furnishings, and other keepsakes leads to a uniquely personal mode of interior design.

Eichholtz: What measures did you take to help us balance creative interpretation with historical and cultural respect throughout the design process?

Leanne: Each of the 1.5 million works in The Met collection offers a unique opportunity to be inspired. We seek to maintain the foundational elements of the inspiration work within every modern interpretation, selecting those objects that can be faithfully reimagined while honoring and respecting the original. Variations to color, material, and scale allow us to translate historic designs for a modern consumer. When the original and the new are viewed side by side, the relationship should be undeniable.

Eichholtz: What does it mean for The Met to bring historical design into modern interiors?

Leanne: Taking cues from furniture and decor items that were once situated in elegant residences, our collaborations with partners such as Eichholtz allow consumers to bring a touch of history to modern spaces. Living with historically inspired home decor offers a new opportunity to generate an appreciation for historic motifs, techniques, and design movements. We hope that each piece will cultivate a refreshed appreciation of art and design, and a curiosity to uncover the stories behind the original works of art.

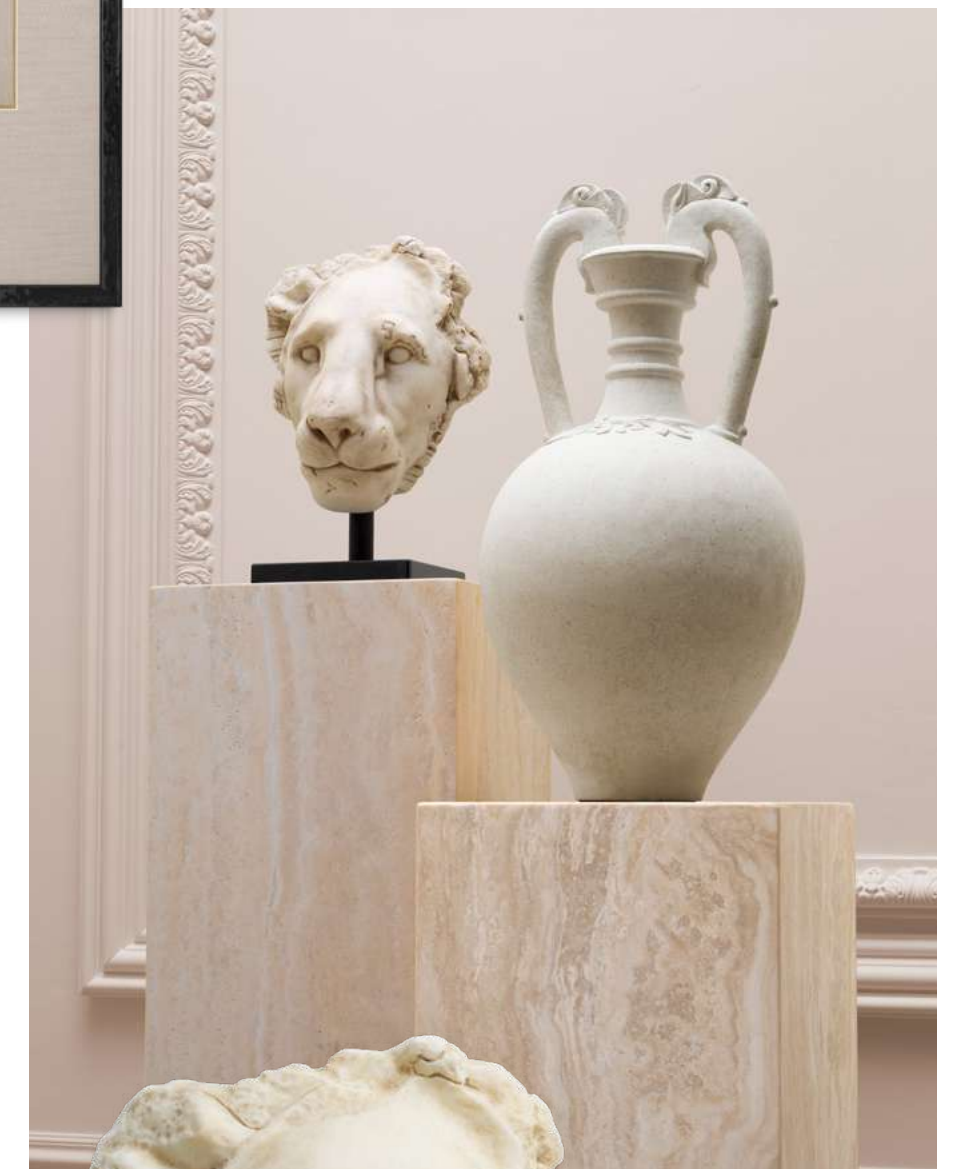


Eichholtz: Were there any surprises or unexpected moments during our collaboration—objects that took on new meaning once we began looking at them through the lens of interior design?

Josh: It has been a pleasure to watch Met objects take on new life through this collaboration. One of our favorite transformations is inspired by a Late Period Egyptian composite papyrus capital dating back to 380–343 BCE. In the first season of our collaboration with Eichholtz, this work inspired a glass wall lamp and chandelier. For this third collection, the same object now serves as the inspiration for an elegant series of wood tables. In all iterations, the Eichholtz design team literally turned the work of art on its head—reinterpreting the elegant, flowing lines of the original from a whole new perspective.

Eichholtz: Why is it important for institutions like The Met to engage in storytelling through collaborations?

Stephen: At The Met, we believe that art remains relevant regardless of era. Collaborations offer a fresh perspective on the artists, movements, and moments in time from which these works originated; and often bring disparate works of art together in unexpected ways to tell brand new stories. When brands choose to engage in collaborations with The Met, they amplify narratives that may otherwise be forgotten or ignored, and serve as an invitation to visit The Met, be inspired to learn about art, or create something totally new.



The Object Lion pays homage to a carved Egyptian lion's head (400–300 BCE), originally used as a model for stone waterspouts on temple walls.





Spanning 5,000 years and more than 1.5 million works of art, The Met collection is a living archive of global creativity.



Rhythm and geometry: contemporary works inspired by Egyptian Art

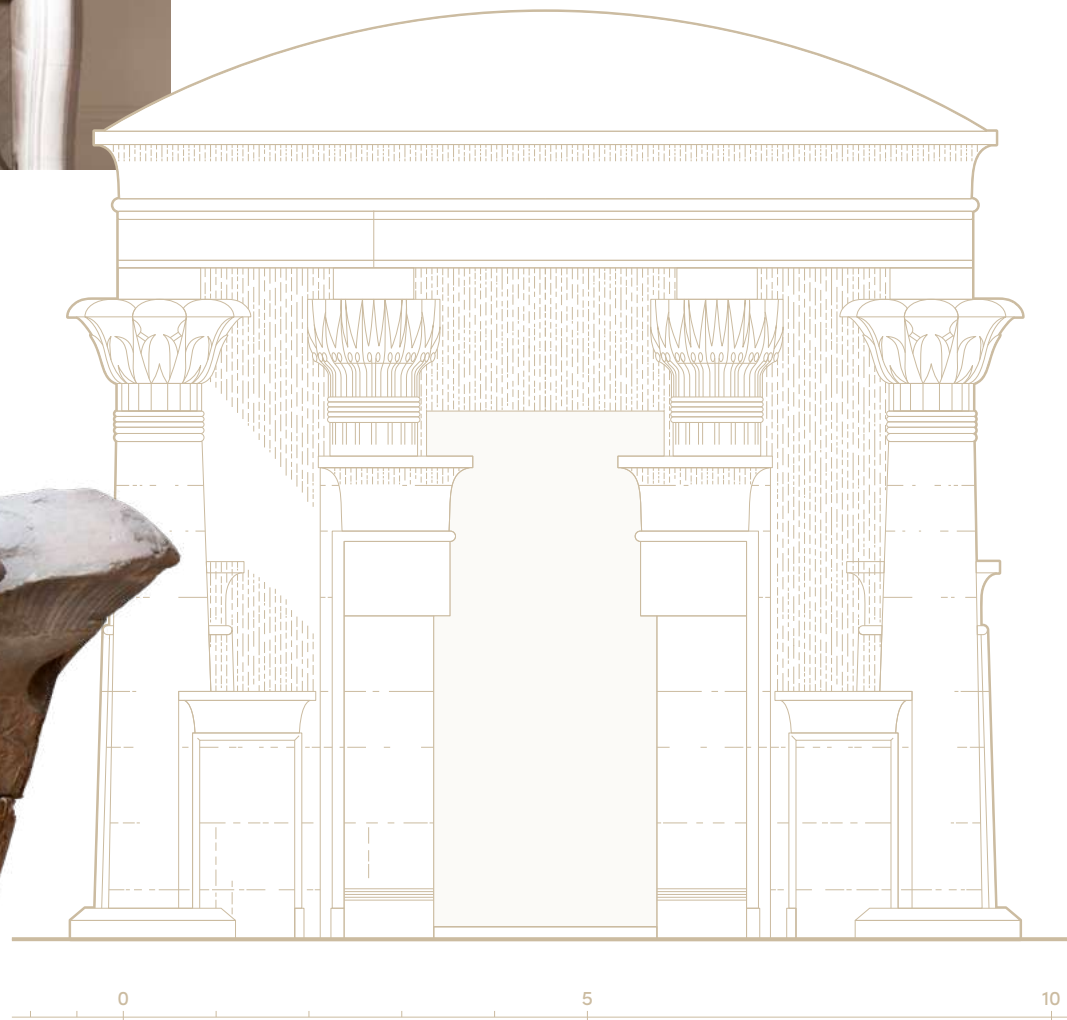
A series of pieces in this season's collection are inspired by a composite papyrus capital (380–343 BCE) in The Met's Egyptian Art holdings. Carved with stylized papyrus and foxtail motifs, the Museum's capital, formerly displayed in front of the Temple of Amun at Hibis, embodies the sacred connection between architectural and natural forms in ancient Egyptian art.

We have been inspired to translate that language of rhythm and symbolism into sculptural, contemporary forms — pieces that reflect the column's upward motion and botanical geometry.

Chandelier Hibis. A glowing expression of Egyptian rhythm and verticality—refined glass elements draw from the floral forms carved in stone.



Composite Papyrus Capital, 380–343 BCE. Egypt. Rogers Fund, 1910.
© The Metropolitan Museum of Art



The original capital from the Temple of Amun at Hibis. Papyrus and foxtail plants converge in a symbolic gesture of life, renewal, and divine structure.



Dining Table, Coffee Table, and Side Table Papyrus. A modern silhouette grounded in ancient inspiration, with a sculptural base that mirrors the symmetry of its namesake.



Chandelier Amun. Layered geometry transforms carved stone into weightless glass, capturing the essence of Egyptian symbolism in a radiant, modern light.



Wall Lamp Amun is the companion piece to the chandelier, translating the series' sculptural geometry into a refined vertical form.









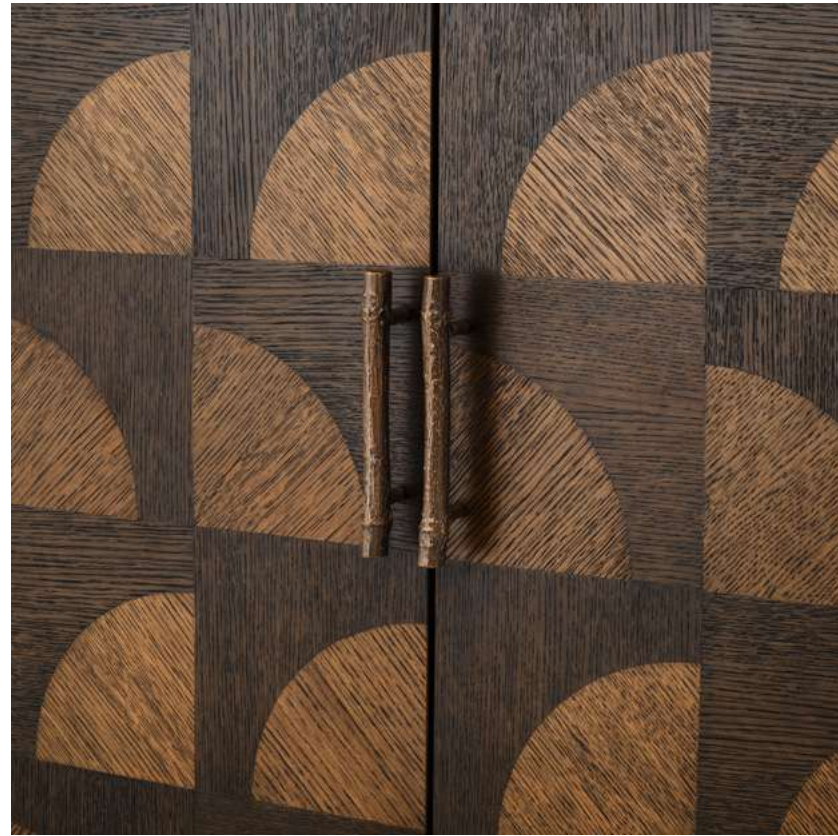


Dish in the shape of a chrysanthemum flower, 18th–19th century, China. Gift of Heber R. Bishop, 1902. © The Metropolitan Museum of Art



The Table Lamp Ramble channels the chrysanthemum-inspired design of an 18th–19th-century Chinese jade dish in The Met collection.





The origin of Cabinet Kumo

Inspired by the fan motifs depicted on a box from Japan's Edo period (1615–1868), the Cabinet Kumo pays tribute to the art of maki-e: a technique using gold and silver powder on wet lacquer, sometimes accompanied by mother-of-pearl inlay. The original box, now in The Met collection, is a delicate expression of refined Japanese artistry, which we've echoed in our contemporary interpretation.

With its minimalist silhouette and charcoal brown finish, the Cabinet Kumo adds a touch of understated sophistication to your interior.





Stewards of storytelling

*A Note from the Chief Creative Officer of Eichholtz,
Edwin van der Gun*

It is with great pride and a deep sense of honor that I welcome you to explore the third season of our award-winning collaboration with The Metropolitan Museum of Art. What began as a creative dialogue between past and present has inspired us to carry forward the stories behind the art.

In previous seasons, my team and I approached the collaboration from the perspective of a collector – fascinated by history, drawn to beauty, and committed to faithful reimaginings. These pieces reflected our admiration for craftsmanship, allowing Eichholtz to bring tangible echoes of art history to a global audience.

This season marks a turning point. This time, we've embraced the vastness of The Met collection, venturing further into the galleries and drawing from a broader range of cultures and time periods. We've

allowed ourselves greater creative liberty, letting our passion for historic design shape a selection of products that speak to the present. There's a profound responsibility in designing from historical material. Each product in this collection began with a moment of wonder. Our goal was to interpret renowned works into unexpected, creative expressions in the form of furniture, lighting, and accessories. Our intention is that each piece may spark a conversation and invite curiosity into the home.

Collaborating with The Met is a rare privilege, and I remain profoundly grateful to the experts who have guided us with care and insight. I'm equally grateful to our customers and partners – you've made it possible for us to keep exploring, keep learning, and keep telling these stories.

Thank you for joining us on this journey.

*Edwin van der Gun
Chief Creative Officer*



EICHHOLTZ

Product overview

Season 3	pages 39 to 41
Season 2	pages 42 to 45
Season 1	pages 46 to 51



SOFA MANHATTAN S
Palmer beige | black base
W. 202 | D. 122 | H. 85 | SD. 64 | SW. 160 | SH. 45 | AH. 60 cm
W. 79.53" | D. 48.03" | H. 33.46" | SD. 25.20" | SW. 62.99"
SH. 17.72" | AH. 23.62"
TM0388 | USA: TMA0388



SOFA STELVIO
Winslow chenille beige | walnut finish base
W. 232 | D. 100 | H. 74 | SD. 70 | SH. 45 cm
W. 91.34" | D. 39.37" | H. 29.13" | SD. 27.56" | SH. 17.72"
TM0344 | USA: TMA0344



CHAIR STELVIO
Winslow chenille beige | walnut finish base
W. 92 | D. 92 | H. 74 | SD. 63 | SH. 43 cm
W. 36.22" | D. 36.22" | H. 29.13" | SD. 24.80" | SH. 16.93"
TM0342 | USA: TMA0342



CHAIR STELVIO
Morris merino camel | walnut finish base
W. 92 | D. 92 | H. 74 | SD. 63 | SH. 43 cm
W. 36.22" | D. 36.22" | H. 29.13" | SD. 24.80" | SH. 16.93"
TM0402 | USA: TMA0402



DINING CHAIR CLAYTON
Winslow chenille beige | black & brass finish legs
W. 62 | D. 64 | H. 90 | SD. 46 | SW. 48 | SH. 52.5 | AH. 64 cm
W. 24.41" | D. 25.20" | H. 35.43" | SD. 18.11" | SW. 18.90"
SH. 20.67" | AH. 25.20"
TM0348 | USA: TMA0348



DINING CHAIR DUVEEN
Winslow chenille beige | dark brown legs
W. 55.5 | D. 63.5 | H. 77.5 | SD. 48 | SH. 50 cm
W. 21.85" | D. 25.00" | H. 30.51" | SD. 18.90" | SH. 19.69"
TM0389 | USA: TMA0389



DINING CHAIR MARLY
Vaux jacquard beige | bronze finish swivel base
W. 59 | D. 57 | H. 76 | SD. 45 | SW. 46 | SH. 51 | AH. 71 cm
W. 23.23" | D. 22.44" | H. 29.92" | SD. 17.72" | SW. 18.11"
SH. 20.08" | AH. 27.95"
TM0401 | USA: TMA0401



STOOL FIFTH
Morris merino camel | bronze finish base
W. 49 | D. 49 | H. 52 cm
W. 19.29" | D. 19.29" | H. 20.47"
TM0353 | USA: TMA0353



STOOL FIFTH
Winslow chenille beige | bronze finish base
W. 49 | D. 49 | H. 52 cm
W. 19.29" | D. 19.29" | H. 20.47"
TM0410 | USA: TMA0410



STOOL ROOSEVELT
Bernard leopard camel | bronze finish base
W. 46 | D. 43 | H. 54 cm
W. 18.11" | D. 16.93" | H. 21.26"
TM0352 | USA: TMA0352



COFFEE TABLE FLORENCE
Silver travertine
Ø 100 | H. 34 cm
Ø 39.37" | H. 13.39"
TM0409



DINING TABLE FLORENCE
Silver travertine
Ø 150 | H. 75.5 cm
Ø 59.06" | H. 29.72"
TM0408



TROLLEY HARROLD
Classic brown finish
L. 116 | W. 42 | H. 86.5 cm
L. 45.67" | W. 16.54" | H. 34.06"
TM0386



CONSOLE TABLE BETHESDA
Bronze highlight finish
W. 140 | D. 40 | H. 76.5 cm
W. 55.12" | D. 15.75" | H. 30.12"
TM0356



COFFEE TABLE BETHESDA
Bronze highlight finish
L. 120 | W. 80 | H. 45.5 cm
L. 47.24" | W. 31.50" | H. 17.91"
TM0357



SIDE TABLE BETHESDA
Bronze highlight finish
L. 40 | W. 60 | H. 50.5 cm
L. 15.75" | W. 23.62" | H. 19.88"
TM0358



SIDE TABLE PAPYRUS
Warm oak veneer
Ø 60 | H. 55 cm
Ø 23.62" | H. 21.65"
TM0407



COFFEE TABLE PAPYRUS
Warm oak veneer
Ø 100 | H. 45 cm
Ø 39.37" | H. 17.72"
TM0406



DINING TABLE PAPYRUS
Warm oak veneer
Ø 140 | H. 76 cm
Ø 55.12" | H. 29.92"
TM0405



SIDE TABLE ROENTGEN
Waxed black finish
Ø 58.5 | H. 74.5 cm
Ø 23.03" | H. 29.33"
TM0334



WALL LAMP JENKINS
Bronze finish | white glass
W. 33 | D. 17 | H. 14 cm
W. 12.99" | D. 6.69" | H. 5.51"
TM0378



CHANDELIER JENKINS S
Bronze finish | white glass
W. 60 | D. 60 | H. 16.5 cm
W. 23.62" | D. 23.62" | H. 6.50"
TM0377 | USA: TM0377UL



CHANDELIER JENKINS L
Bronze finish | white glass
W. 80 | D. 80 | H. 19 cm
W. 31.50" | D. 31.50" | H. 7.48"
TM0355 | USA: TM0355UL



PENDANT ROCKEFELLER
Bronze finish | white glass
W. 30 | D. 26 | H. 60 cm
W. 11.81" | D. 10.24" | H. 23.62"
TM0379 | USA: TM0379



SIDE TABLE PAPYRUS
Dark brown oak veneer
Ø 60 | H. 55 cm
Ø 23.62" | H. 21.65"
TM0382



COFFEE TABLE PAPYRUS
Dark brown oak veneer
Ø 100 | H. 45 cm
Ø 39.37" | H. 17.72"
TM0381



DINING TABLE PAPYRUS
Dark brown oak veneer
Ø 140 | H. 76 cm
Ø 55.12" | H. 29.92"
TM0380



SIDE TABLE VERNEY
Antique silver plated
L. 37.5 | W. 37.5 | H. 66 cm
L. 14.76" | W. 14.76" | H. 25.98"
TM0375



CANDLE HOLDER PHILIP
Antique gold finish
L. 14.5 | W. 14 | H. 39.5 cm
L. 5.71" | W. 5.51" | H. 15.55"
TM0337



CANDLE HOLDER THOMSON
Antique silver finish
L. 16.5 | W. 17 | H. 27.5 cm
L. 6.50" | W. 6.69" | H. 10.83"
TM0336



BOX MEIJI
Antique brass finish
L. 28 | W. 17.5 | H. 9 cm
L. 11.02" | W. 6.89" | H. 3.54"
TM0398



CUSHION DIANA
Bernard leopard camel
L. 60 | W. 40 cm
L. 23.62" | W. 15.75"
TM0397



CONSOLE TABLE CADWALADER
Black finish | black marble
W. 128.5 | D. 64 | H. 83 cm
W. 50.59" | D. 25.20" | H. 32.68"
TM0338



DINING TABLE METROPOLITAN
Black open grain veneer
L. 230 | W. 110 | H. 76 cm
L. 90.55" | W. 43.31" | H. 29.92"
TM0387



CABINET BETHESDA
Bronze highlight finish
W. 150 | D. 50 | H. 230.5 cm
W. 59.06" | D. 19.69" | H. 90.75"
TM0359



CABINET KUMO
Charcoal brown oak veneer
W. 131 | D. 50 | H. 170 cm
W. 51.57" | D. 19.69" | H. 66.93"
TM0362



VASE BENNINGTON
White marble
L. 25 | W. 25 | H. 35.5 cm
L. 9.84" | W. 9.84" | H. 13.98"
TM0339



VASE AMPHORA
Sandstone finish
Ø 28 | H. 53 cm
Ø 11.02" | H. 20.87"
TM0370



WALL OBJECT LIAO SET OF 2
Sandstone finish
L. 53 | W. 55 | D. 10 cm
L. 20.87" | W. 21.65" | D. 3.94"
TM0335



OBJECT LION
Sandstone finish | black base
L. 24 | W. 19.5 | H. 35 cm
L. 9.45" | W. 7.68" | H. 13.78"
TM0371



TABLE LAMP RAMBLE
Antique gold finish | black granite base
W. 34.5 | max W. 40 | H. 67 cm
W. 13.58" | max W. 15.75" | H. 26.38"
TM0400 | USA: TM0400UL



TABLE LAMP FRANCIS
Antique gold finish
W. 8 | max W. 45 | H. 83.5 cm
W. 3.15" | max W. 17.72" | H. 32.87"
TM0399 | USA: TM0399UL



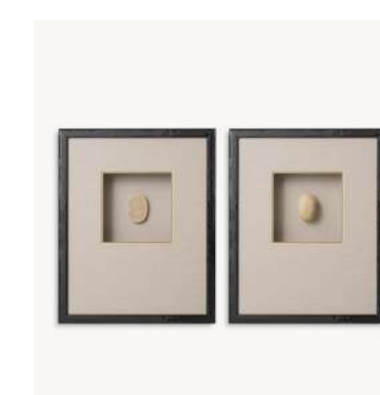
CHANDELIER HIBIS
Antique brass finish | clear glass
W. 40 | D. 40 | H. 58 cm
W. 15.75" | D. 15.75" | H. 22.83"
TM0376 | USA: TM0376UL



CHANDELIER HIBIS
Bronze finish | smoke glass
W. 40 | D. 40 | H. 58 cm
W. 15.75" | D. 15.75" | H. 22.83"
TM0404 | USA: TM0404UL



OBJECT WALPOLE
Antique silver plated
L. 32 | W. 30 | H. 38 cm
L. 12.60" | W. 11.81" | H. 11.81"
TM0035



WALL ART INLAY
Black wooden frame | clear glass
W. 44 | D. 6 | H. 54 cm | per frame
W. 17.32" | D. 2.36" | H. 21.26"
TM0368

End of Season 3
Turn the page to explore Seasons 1 and 2



DINING CHAIR ROUMIER

Palmer beige | black legs
W. 58 | D. 63 | H. 76 | SD. 48 | SW. 45 | SH. 49 | AH. 60.5 cm
W. 22.83" | D. 24.80" | H. 29.92" | SD. 18.90" | SW. 17.72"
SH. 19.29" | AH. 23.82"
TMO299 | USA: TMA0299



BAR STOOL ROUMIER

Palmer beige | black legs
W. 57 | D. 59 | H. 108.5 | SD. 44 | SW. 45 | SH. 82 | AH. 93.5 cm
W. 22.44" | D. 23.23" | H. 42.72" | SD. 17.32" | SW. 17.72"
SH. 32.28" | AH. 36.81"
TMO300 | USA: TMA0300



COUNTER STOOL ROUMIER

Palmer beige | black legs
W. 57 | D. 59 | H. 98.5 | SD. 44 | SW. 45 | SH. 72 | AH. 83.5 cm
W. 22.44" | D. 23.23" | H. 38.78" | SD. 17.32" | SW. 17.72"
SH. 28.35" | AH. 32.87"
TMO301 | USA: TMA0301



ACCENT CHAIR ROUMIER

Palmer beige | black legs
W. 67 | D. 86 | H. 85 | SD. 55.5 | SW. 54 | SH. 44 | AH. 55 cm
W. 26.38" | D. 33.86" | H. 33.46" | SD. 21.85" | SW. 21.26"
SH. 17.32" | AH. 21.65"
TMO298 | USA: TMA0298



SIDE TABLE HARLEM

Piano black finish | clear glass top
Ø 69 | H. 68 cm
Ø 27.17" | H. 26.77"
TMO227



SIDE TABLE ASWAN

Piano black finish | clear glass top
Ø 50 | H. 78.5 cm
Ø 19.69" | H. 30.91"
TMO218



SIDE TABLE BOWERY

Antique mirror glass | bronze finish
Ø 60.5 | H. 60 cm
Ø 23.82" | H. 23.62"
TMO216



COFFEE TABLE BOWERY

Antique mirror glass | bronze finish
Ø 79 | H. 48.5 cm
Ø 31.10" | H. 19.09"
TMO215



SWIVEL CHAIR MADISON

Palmer beige | swivel base
W. 79.5 | D. 87 | H. 83.5 | SD. 53.5 | SW. 52 | SH. 50.5 | AH. 62.5 cm
W. 31.30" | D. 34.25" | H. 32.87" | SD. 21.06" | SW. 20.47"
SH. 19.88" | AH. 24.61"
TMO207 | USA: TMA0207



CHAIR MANHATTAN

Palmer beige | black base
W. 118 | D. 117 | H. 77 | SD. 60 | SH. 44 | AH. 60 cm
W. 46.46" | D. 46.06" | H. 30.31" | SD. 23.62"
SH. 17.32" | AH. 23.62"
TMO243 | USA: TMA0243



SOFA MANHATTAN

Palmer beige | black base
W. 276 | D. 117 | H. 77 | SD. 60 | SH. 44 | AH. 60 cm
W. 108.66" | D. 46.06" | H. 30.31" | SD. 23.62"
SH. 17.32" | AH. 23.62"
TMO242 | USA: TMA0242



DINING CHAIR MARLY

Palmer beige | bronze finish swivel base
W. 59 | D. 57 | H. 76 | SD. 45 | SW. 46 | SH. 51 | AH. 71 cm
W. 23.23" | D. 22.44" | H. 29.92" | SD. 17.72" | SW. 18.11"
SH. 20.08" | AH. 27.95"
TMO238 | USA: TMA0238



DINING TABLE PIAZZA

Travertine
L. 120 | W. 120 | H. 76 cm
L. 47.24" | W. 47.24" | H. 29.92"
TMO220



DINING TABLE AMERICANA

Black veneer open grain
L. 300 | W. 110 | H. 76 cm
L. 118.11" | W. 43.31" | H. 29.92"
TMO221



DESK WIMBLETON

Waxed black finish | antique brass finish
W. 185 | D. 91 | H. 76.5 cm
W. 72.83" | D. 35.83" | H. 30.12"
TMO066



CONSOLE TABLE ROCOCO

Antique gold finish | white marble
W. 125 | D. 59.5 | H. 83 cm
W. 49.21" | D. 23.43" | H. 32.68"
TMO228



CHAIR GEORGES JACOB

Sentier cream | antique gold finish
W. 120 | D. 70 | H. 101 | SD. 57 | SW. 106 | SH. 50 | AH. 64.5 cm
W. 47.24" | D. 27.56" | H. 39.76" | SD. 22.44" | SW. 41.73"
SH. 19.69" | AH. 25.39"
TMO192 | USA: TMA0192



DINING CHAIR CLAYTON

Morris merino camel | black legs
W. 62 | D. 64 | H. 90 | SD. 46 | SW. 48 | SH. 52.5 | AH. 64 cm
W. 24.41" | D. 25.20" | H. 35.43" | SD. 18.11" | SW. 18.90"
SH. 20.67" | AH. 25.20"
TMO278 | USA: TMA0278



STOOL GREENWICH

Pelton jacquard off-white
W. 58 | D. 58 | H. 55 cm
W. 22.83" | D. 22.83" | H. 21.65"
TMO239 | USA: TMA0239



STOOL GREENWICH

Bernard leopard
W. 58 | D. 58 | H. 55 cm
W. 22.83" | D. 22.83" | H. 21.65"
TMO208 | USA: TMA0208



CONSOLE TABLE CROOME COURT

Antique white finish | white marble
L. 214 | W. 86 | H. 91 cm
L. 84.25" | W. 33.86" | H. 35.83"
TMO311



CONSOLE TABLE GALA

Black finish | clear glass
W. 156.5 | D. 66.5 | H. 79 cm
W. 61.61" | D. 26.18" | H. 31.10"
TMO259



CABINET GALA

Black finish | clear glass
W. 147 | D. 79 | H. 238 cm
W. 57.87" | D. 31.10" | H. 93.70"
TMO065



CABINET KELLAM

Black finish | antique mirror glass
W. 153 | D. 46 | H. 250 cm
W. 60.24" | D. 18.11" | H. 98.43"
TMO222



SIDE TABLE METROPOLITAN

Oak veneer | antique mirror glass
L. 60 | W. 60 | H. 50 cm
L. 23.62" | W. 23.62" | H. 19.69"
TMO303



COFFEE TABLE METROPOLITAN

Oak veneer | antique mirror glass
L. 100 | W. 100 | H. 40 cm
L. 39.37" | W. 39.37" | H. 15.75"
TMO302



SIDE TABLE METROPOLITAN

Oak veneer | antique mirror glass
L. 100 | W. 100 | H. 40 cm
L. 23.62" | W. 23.62" | H. 19.69"
TMO232



COFFEE TABLE METROPOLITAN

Oak veneer | antique mirror glass
L. 60 | W. 60 | H. 40 cm
L. 39.37" | W. 39.37" | H. 15.75"
TMO231



BAR METROPOLITAN

Black open grain veneer | antique mirror glass
W. 120 | D. 48 | H. 104 cm
W. 47.24" | D. 18.90" | H. 40.94"
TMO219



TABLE LAMP ANTONINE

Antique look finish | brushed brass finish
W. 57.5 | max W. 80 | H. 97 cm
. 22.64" | max W. 31.50" | H. 38.19"
TMO314 | USA: TMO314UL



TABLE LAMP MOON JAR

Taupe finish | brushed brass finish
W. 45 | max W. 79 | H. 102 cm
W. 17.72" | max W. 31.10" | H. 40.16"
TMO312 | USA: TMO312UL



TABLE LAMP HATHOR

Sandstone | brushed brass finish
W. 29 | max W. 50 | H. 78 cm
W. 11.42" | max W. 19.69" | H. 30.71"
TMO313 | USA: TMO313UL



TABLE LAMP HORUS
Copper bronze finish
W. 15 | max W. 50 | H. 90 cm
W. 5.91" | max W. 19.69" | H. 35.43"
TM0331 | USA: TM0331UL



FLOOR LAMP THOMAS
Matte black finish | black marble base
W. 55 | max W. 55 | H. 175 cm
W. 21.65" | max W. 21.65" | H. 68.90"
TM0329 | USA: TM0329UL



FLOOR LAMP CORBIN
Antique brass finish
W. 38 | D. 20 | H. 158.5 cm
W. 14.96" | D. 7.87" | H. 62.40"
TM0320 | USA: TM0320UL



FLOOR LAMP CORBIN
Antique brass finish
W. 38 | D. 20 | H. 158.5 cm
W. 14.96" | D. 7.87" | H. 62.40"
TM0321 | USA: TM0321UL



VASE HYDRIA
White finish
Ø 60 | H. 60 cm
Ø 23.62" | H. 23.62"
TM0017



VASE MOON JAR
Taupe finish
Ø 40 | H. 57 cm
Ø 15.75" | H. 22.44"
TM0288



VASE MOON JAR
Taupe finish
Ø 42 | H. 57 cm
Ø 16.54" | H. 22.44"
TM0286



VASE MOON JAR
Taupe finish
Ø 40 | H. 57 cm
Ø 15.75" | H. 22.44"
TM0287



FLOOR LAMP TRYON
Antique brass finish
W. 20 | D. 20 | H. 146.5 cm
W. 7.87" | D. 7.87" | H. 57.68"
TM0318 | USA: TM0318UL



FLOOR LAMP TRYON
Antique brass finish
W. 20 | D. 20 | H. 146.5 cm
W. 7.87" | D. 7.87" | H. 57.68"
TM0319 | USA: TM0319UL



WALL LAMP AMUN
Brushed brass finish | smoke glass
L. 16 | W. 15.5 | D. 17.5 | H. 39.5 cm
L. 6.30" | W. 6.10" | D. 6.89" | H. 15.55"
TM0296 | USA: TM0296UL



CHANDELIER AMUN
Brushed brass finish | smoke glass
Ø 72 | H. 57 cm
Ø 28.35" | H. 22.44"
TM0282 | USA: TM0282UL



WALL OBJECT SALERNO SET OF 2
Sand finish
W. 44.5 | D. 5 | H. 63.5 cm
W. 17.52" | D. 1.97" | H. 25.00"
TM0174



CUSHION DIANA
Bernard leopard
L. 60 | W. 60 cm
L. 23.62" | W. 23.62"
TM0317



BOWL MEMPHITE S
Natural onyx
Ø 37 | H. 7.5 cm
Ø 14.57" | H. 2.95"
TM0197



BOWL MEMPHITE L
Natural onyx
Ø 41 | H. 8 cm
Ø 16.14" | H. 3.15"
TM0260



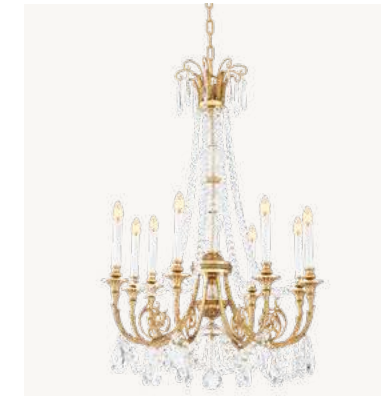
CHANDELIER IMPERIAL S
Brushed brass finish | smoke glass
Ø 35 | H. 74 cm
Ø 13.78" | H. 29.13"
TM0244 | USA: TM0244UL



CHANDELIER IMPERIAL DOUBLE
Brushed brass finish | smoke glass
Ø 93.5 | H. 74 cm
Ø 36.81" | H. 29.13"
TM0261 | USA: TM0261



CHANDELIER PALAIS
Antique gold finish
Ø 97 | H. 99 cm
Ø 38.19" | H. 38.98"
TM0289 | USA: TM0289UL



CHANDELIER DUVAUX
Antique gold finish
Ø 80 | H. 116 cm
Ø 31.50" | H. 45.67"
TM0245 | USA: TM0245UL



WALL ELEMENT LUMIÈRE
Antique brass finish
W. 46 | D. 24.5 | H. 55 cm
W. 18.11" | D. 9.65" | H. 21.65"
TM0094



CANDLE HOLDER DECAIX
Antique brass finish
L. 23.5 | W. 24.5 | H. 52.5 cm
L. 9.25" | W. 9.65" | H. 20.67"
TM0188



CANDLE HOLDER BERAIN
Antique silver finish
Ø 13.5 | H. 24.5 cm
Ø 5.31" | H. 9.65"
TM0250



CANDLE HOLDER CARNIER L
Antique brass finish
Ø 11 | H. 32 cm
Ø 4.33" | H. 12.60"
TM0285



MIRROR GOULD SET OF 2
Antique gold finish
W. 30.5 | D. 4.5 | H. 80 cm
W. 12.01" | D. 1.77" | H. 31.50"
TM0224



MIRROR GIRANDOLE
Antique gold finish | antique mirror glass
W. 73 | D. 15 | H. 139 cm
W. 28.74" | D. 5.91" | H. 54.72"
TM0177



MIRROR SAHURE M
Antique gold finish
W. 77 | D. 8.5 | H. 102.5 cm
W. 30.31" | D. 3.35" | H. 40.35"
TM0240



WALL ART INLAY HATSHEPSUT SET OF 4
Black wooden frame | clear glass
W. 44 | D. 3 | H. 54 cm | per frame
W. 17.32" | D. 1.18" | H. 21.26"
TM0330



BUST OF A YOUTH
Marble | black granite base
L. 20.5 | W. 23 | H. 37.5 cm
L. 8.07" | W. 9.06" | H. 14.76"
TM0254



BUST HERMES
Marble antique look | black granite base
L. 25 | W. 28 | H. 49.5 cm
L. 9.84" | W. 11.02" | H. 19.49"
TM0255



BUST OF JULIUS CAESAR
Marble antique look
L. 50.5 | W. 27 | H. 69.5 cm
L. 19.88" | W. 10.63" | H. 27.36"
TM0183



MIRROR SAHURE L
Antique gold finish
L. 176 | W. 57 | D. 8.5 cm
L. 69.29" | W. 22.44" | D. 3.35"
TM0262



CHAIR LOUIS
Antique gold finish | senier cream
W. 71.5 | D. 65.5 | H. 111 | SD. 60 | SH. 50 | AH. 74 cm
W. 28.15" | D. 25.79" | H. 43.70" | SD. 23.62"
SH. 19.69" | AH. 29.13"
TM0003 | USA: TMA0003



DINING CHAIR PARK
Johnston brown mohair | black legs
W. 62 | D. 61 | H. 80 | SD. 47 | SH. 46 | AH. 65.5 cm
W. 24.41" | D. 24.02" | H. 31.50" | SD. 18.50"
SH. 18.11" | AH. 25.79"
TM0005 | USA: TMA0005



DINING CHAIR PARK
Palmer beige | black legs
W. 62 | D. 61 | H. 80 | SD. 47 | SH. 46 | AH. 65.5 cm
W. 24.41" | D. 24.02" | H. 31.50" | SD. 18.50"
SH. 18.11" | AH. 25.79"
TM0112 | USA: TMA0112



CHAIR MANHATTAN
Hunt Chenille taupe | black base
W. 118 | D. 117 | H. 77 | SD. 60 | SH. 44 | AH. 60 cm
W. 46.46" | D. 46.06" | H. 30.31" | SD. 23.62"
SH. 17.32" | AH. 23.62"
TM0014 | USA: TMA0014



COLUMN LUCCA
Travertine
L. 30 | W. 30 | H. 100 cm
L. 11.81" | W. 11.81" | H. 39.37"
TM0046



COLUMN LUCCA
Travertine
L. 30 | W. 30 | H. 120 cm
L. 11.81" | W. 11.81" | H. 47.24"
TM0047



COLUMN GRANT
Natural oak veneer
L. 40 | W. 40 | H. 100 cm
L. 15.75" | W. 15.75" | H. 39.37"
TM0096



COLUMN GRANT
Natural oak veneer
L. 40 | W. 40 | H. 120 cm
L. 15.75" | W. 15.75" | H. 47.24"
TM0109



SOFA MANHATTAN
Hunt Chenille taupe | black base
W. 276 | D. 117 | H. 77 | SD. 60 | SH. 44 | AH. 60 cm
W. 108.66" | D. 46.06" | H. 30.31" | SD. 23.62"
SH. 17.32" | AH. 23.62"
TM0012 | USA: TMA0012



SOFA MADISON
Palmer beige
W. 277 | D. 101 | H. 77 | SD. 65 | SH. 41 | AH. 57 cm
W. 109.06" | D. 39.76" | H. 30.31" | SD. 25.59"
SH. 16.14" | AH. 22.44"
TM0010 | USA: TMA0010



SIDE TABLE LIONESS
Bronze finish | bevelled glass
Ø 62 | H. 64 cm
Ø 24.41" | H. 25.20"
TM0072



COFFEE TABLE LIONESS
Bronze finish | bevelled glass
Ø 96 | H. 36.5 cm
Ø 37.80" | H. 14.37"
TM0073



COLUMN LUCCA
White marble
L. 30 | W. 30 | H. 100 cm
L. 11.81" | W. 11.81" | H. 39.37"
TM0081



COLUMN LUCCA
White marble
L. 30 | W. 30 | H. 120 cm
L. 11.81" | W. 11.81" | H. 47.24"
TM0082



COLUMN GRANT
Black veneer
L. 40 | W. 40 | H. 100 cm
L. 15.75" | W. 15.75" | H. 39.37"
TM0104



COLUMN GRANT
Black veneer
L. 40 | W. 40 | H. 120 cm
L. 15.75" | W. 15.75" | H. 47.24"
TM0105



COFFEE TABLE ACANTHUS
White marble
L. 65.5 | W. 65.5 | H. 46 cm
L. 25.79" | W. 25.79" | H. 18.11"
TM0068



SIDE TABLE AMERICANA
Black veneer
L. 60 | W. 60 | H. 51 cm
L. 23.62" | W. 23.62" | H. 20.08"
TM0076



COFFEE TABLE AMERICANA
Black veneer
L. 130 | W. 80 | H. 51 cm
L. 51.38" | W. 31.50" | H. 20.08"
TM0075



CENTER LIBRARY TABLE
Black veneer
L. 300 | W. 120 | H. 78 cm
L. 118.11" | W. 47.24" | H. 30.71"
TM0097



DRESSER METROPOLITAN
Natural oak veneer
W. 134 | D. 50 | H. 70.5 cm
W. 52.76" | D. 19.69" | H. 27.76"
TM0138



DRESSER METROPOLITAN
Natural oak veneer
W. 220.5 | D. 50.5 | H. 70 cm
W. 86.81" | D. 19.88" | H. 27.56"
TM0144



CABINET METROPOLITAN
Natural oak veneer
W. 134.5 | D. 50 | H. 236 cm
W. 52.95" | D. 19.69" | H. 92.91"
TM0137



CABINET METROPOLITAN
Natural oak veneer
W. 220.5 | D. 50 | H. 236 cm
W. 86.81" | D. 19.69" | H. 92.91"
TM0136



COFFEE TABLE FLORENCE
Travertine
Ø 100 | H. 34 cm
Ø 59.06" | H. 28.54"
TM0071



DINING TABLE FLORENCE
Travertine
Ø 150 | H. 72.5 cm
Ø 59.06" | H. 28.54"
TM0070



CONSOLE TABLE MATTHIAS
Antique gold finish | green marble
L. 180 | W. 82 | H. 90.5 cm
L. 70.87" | W. 32.28" | H. 35.63"
TM0078



CABINET WATSON
Brushed brass finish | clear glass
W. 135 | D. 37 | H. 230 cm
W. 53.15" | D. 14.57" | H. 90.55"
TM0119



DRESSER METROPOLITAN
Charcoal grey oak veneer
W. 134 | D. 50 | H. 70.5 cm
W. 52.76" | D. 19.69" | H. 27.76"
TM0143



DRESSER METROPOLITAN
Charcoal grey oak veneer
W. 220.5 | D. 50.5 | H. 70 cm
W. 86.81" | D. 19.88" | H. 27.56"
TM0139



CABINET METROPOLITAN
Charcoal grey oak veneer
W. 134.5 | D. 50 | H. 236 cm
W. 52.95" | D. 19.69" | H. 92.91"
TM0142



CABINET METROPOLITAN
Charcoal grey oak veneer
W. 220.5 | D. 50 | H. 236 cm
W. 86.81" | D. 19.69" | H. 92.91"
TM0141



CABINET GALLERY
Black veneer | clear glass
W. 135.5 | D. 64 | H. 200 cm
W. 53.35" | D. 25.20" | H. 78.74"
TM0064



TABLE LAMP FALCON
Copper bronze finish
W. 15 | max W. 50 | H. 90 cm
W. 5.91" | max W. 19.69" | H. 35.43"
TM0151 | USA: TM0151UL



TABLE LAMP HORUS
Copper bronze finish
W. 15 | max W. 50 | H. 90 cm
W. 5.91" | max W. 19.69" | H. 35.43"
TM0154 | USA: TM0154UL



TABLE LAMP MOON JAR
Sand finish | brushed brass finish
W. 45 | max W. 79 | H. 102 cm
W. 17.72" | max W. 31.10" | H. 40.16"
TM0159 | USA: TM0159UL



MIRROR CHIPPENDALE
Black finish | bevelled mirror glass
L. 161 | W. 104 | D. 7 cm
L. 63.39" | W. 40.94" | D. 2.76"
TM0084



WALL OBJECT SEBENNYTOS
Bronze highlight finish
L. 86 | W. 65 | D. 4 cm
L. 33.86" | W. 25.59" | D. 1.57"
TM0019



WALL OBJECT AKHIHOTEP
Bronze highlight finish
L. 110 | W. 82 | D. 4 cm
L. 43.31" | W. 32.28" | D. 1.57"
TM0032



WALL OBJECT ACANTHUS
Sand finish
L. 179 | W. 40 | D. 6 cm
L. 70.47" | W. 15.75" | D. 2.36"
TM0018



CHANDELIER IMPERIAL
Brushed brass finish | clear glass
Ø 44 | H. 106 cm
Ø 17.32" | H. 41.73"
TM0145 | USA: TM0145UL



WALL LAMP IMPERIAL
Brushed brass finish | clear glass
W. 34 | D. 20 | H. 59 cm
W. 13.39" | D. 7.87" | H. 23.23"
TM0146 | USA: TM0146UL



CHANDELIER IMPERIAL
Brushed brass finish | smoke glass
Ø 44 | H. 106 cm
Ø 17.32" | H. 41.73"
TM0062 | USA: TM0062UL



WALL LAMP IMPERIAL
Brushed brass finish | smoke glass
W. 34 | D. 20 | H. 59 cm
W. 13.39" | D. 7.87" | H. 23.23"
TM0130 | USA: TM0130UL



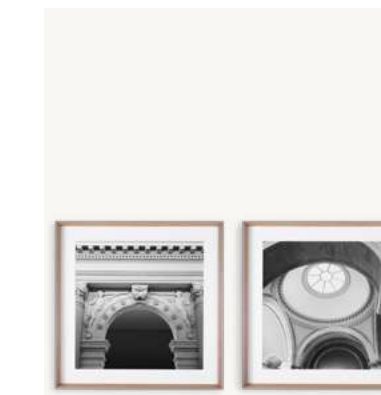
WALL OBJECT ACANTHUS SCROLL
Sand finish
L. 84 | W. 51 | D. 36 cm
L. 33.07" | W. 20.08" | D. 14.17"
TM0102



PRINT 1 INTERIOR
Grey wooden frame | clear glass
L. 113 | W. 83 | D. 6.5 cm
L. 44.49" | W. 32.68" | D. 2.56"
TM0087



PRINT 2 INTERIOR
Grey wooden frame | clear glass
L. 113 | W. 83 | D. 6.5 cm
L. 44.49" | W. 32.68" | D. 2.56"
TM0088



PRINT THE GREAT HALL
Grey wooden frame | clear glass
L. 83 | W. 83 | D. 6.5 cm | per item
L. 32.68" | W. 32.68" | D. 2.56" | per item
TM0038



CHANDELIER SAHURE L
Brushed brass finish | smoke glass
Ø 46 | H. 123 cm
Ø 18.11" | H. 48.43"
TM0106 | USA: TM0106UL



WALL LAMP SAHURE
Brushed brass finish | smoke glass
W. 19 | D. 14 | H. 51.5 cm
W. 7.48" | D. 5.51" | H. 20.28"
TM0131 | USA: TM0131UL



CHANDELIER SAHURE S
Brushed brass finish | smoke glass
Ø 39 | H. 110 cm
Ø 15.35" | H. 43.31"
TM0059 | USA: TM0059UL



FLOOR LAMP CORBIN
Brushed brass finish
W. 38 | D. 20 | H. 158.5 cm
W. 14.96" | D. 7.87" | H. 62.40"
TM0161 | USA: TM0161UL



PRINT 3 INTERIOR
Grey wooden frame | clear glass
L. 113 | W. 83 | D. 6.5 cm
L. 44.49" | W. 32.68" | D. 2.56"
TM0089



PRINT 4 INTERIOR
Grey wooden frame | clear glass
L. 113 | W. 83 | D. 6.5 cm
L. 44.49" | W. 32.68" | D. 2.56"
TM0090



WALL ART INLAY HERMOPOLIS
Antique gold wooden frame | clear glass
L. 53 | W. 43 | D. 4.5 cm | per item
L. 20.87" | W. 16.93" | D. 1.77" | per item
TM0165



TRAY HARAGA S
Natural onyx
Ø 30 | H. 1.5 cm
Ø 11.81" | H. 0.59"
TM0126



FLOOR LAMP TRYON
Brushed brass finish
W. 20 | D. 20 | H. 146.5 cm
W. 7.87" | D. 7.87" | H. 57.68"
TM0147 | USA: TM0147UL



FLOOR LAMP CORBIN
Brushed brass finish
W. 38 | D. 20 | H. 158.5 cm
W. 14.96" | D. 7.87" | H. 62.40"
TM0149 | USA: TM0149UL



FLOOR LAMP TRYON
Brushed brass finish
W. 20 | D. 20 | H. 146.5 cm
W. 7.87" | D. 7.87" | H. 57.68"
TM0162 | USA: TM0162UL



MIRROR ROCOCO
Antique gold finish | antique mirror glass
L. 160 | W. 91 | D. 7 cm
L. 62.99" | W. 35.83" | D. 2.76"
TM0049



TRAY HARAGA L
Natural onyx
Ø 36 | H. 2 cm
Ø 14.17" | H. 0.79"
TM0153



BOWL FAYUM
Natural onyx
Ø 16 | H. 12 cm
Ø 6.30" | H. 4.72"
TM0128



VASE FAYUM S
Natural onyx
Ø 22.5 | H. 14 cm
Ø 8.86" | H. 5.51"
TM0086



VASE FAYUM L
Natural onyx
Ø 27 | H. 18.5 cm
Ø 10.63" | H. 7.28"
TM0125



VASE ANTONINE
Antique finish
W. 58 | D. 49 | H. 48 cm
W. 22.83" | D. 19.29" | H. 18.90"
TM0041



VASE MOON JAR
Sand finish
Ø 42 | H. 57 cm
Ø 16.54" | H. 22.44"
TM0036



VASE MOON JAR
Sand finish
Ø 40 | H. 57 cm
Ø 15.75" | H. 22.44"
TM0110



VASE MOON JAR
Sand finish
Ø 40 | H. 57 cm
Ø 15.75" | H. 22.44"
TM0111



OBJECT ARTEMIS CAPITAL
Cast metal | bronze finish
L. 48.5 | W. 27.5 | H. 19 cm
L. 19.09" | W. 10.83" | H. 7.48"
TM0121



OBJECT ACANTHUS
Sand finish
L. 120.5 | W. 26 | H. 6 cm
L. 47.44" | W. 10.24" | H. 2.36"
TM0124



COLUMN VENETO
Wood | antique finish
W. 35 | D. 35 | H. 220 cm
W. 13.78" | D. 13.78" | H. 86.61"
TM0033



OBJECT ARTEMIS COLUMN
Marble
W. 24 | D. 22 | H. 45 cm
W. 9.45" | D. 8.66" | H. 17.72"
TM0048



VASE CALYX-KRATER
White finish
Ø 63 | H. 84 cm
Ø 24.80" | H. 33.07"
TM0022



CANDLE HOLDER CARNIER
Vintage brass finish
Ø 11 | H. 24 cm
Ø 4.33" | H. 9.45"
TM0045



HURRICANE VITRUVIAN
Polished brass finish | clear glass
Ø 16 | H. 46.5 cm
Ø 6.30" | H. 18.31"
TM0163



HURRICANE BRITANNIA
Bronze highlight finish | clear glass
Ø 22 | H. 68 cm
Ø 8.66" | H. 26.77"
TM0164



CARPET MANSION
Natural | ivory | brown
L. 300 | W. 400 cm
L. 118.11" | W. 157.48"
TM0118



CARPET CARNEGIE
Natural
L. 300 | W. 400 cm
L. 118.11" | W. 157.48"
TM0140



CARPET AKHTIHOTEP
Sand | ivory
L. 300 | W. 400 cm
L. 118.11" | W. 157.48"
TM0060



BUST OF LUCIUS VERUS
Marble | black granite base
W. 23.5 | D. 30 | H. 58 cm
W. 9.25" | D. 11.81" | H. 22.83"
TM0020



STATUE ZEUS
Marble
W. 26 | D. 20 | H. 40 cm
W. 10.24" | D. 7.87" | H. 15.75"
TM0042



BUST OF HATSEPSUT
Sandstone | black metal base
W. 30 | D. 40 | H. 58 cm
W. 11.81" | D. 15.75" | H. 22.83"
TM0024



EMPEROR AUGUSTUS
Sandstone
W. 30 | D. 25 | H. 26 cm
W. 11.81" | D. 9.84" | H. 10.24"
TM0067



OBJECT RECLINING LION
White marble
W. 42.5 | D. 21 | H. 22 cm
W. 16.73" | D. 8.27" | H. 8.66"
TM0058



OBJECT SPHINX
White marble
W. 20 | D. 9 | H. 29.5 cm | per item
W. 7.87" | D. 3.54" | H. 11.61" | per item
TM0079



BUST ROMAN IMPERIAL
Marble | black granite base
W. 19 | D. 15 | H. 49 cm
W. 7.48" | D. 5.91" | H. 19.29"
TM0080



OBJECT SPHINX OF HATSEPSUT
Granite
W. 59 | D. 16.5 | H. 28 cm
W. 23.23" | D. 6.50" | H. 11.02"
TM0083

Eichholtz B.V.

Delfweg 52, 2211 VN
Noordwijkerhout
The Netherlands

Eichholtz.com
Phone: +31 252 515 850
Email: info@eichholtz.com

Copyright

© 2025 / 2026 Eichholtz B.V.
All rights reserved. No part of this publication may be reproduced, stored in a retrieval system, or transmitted in any form or by any means, electronic, mechanical, photocopying, recording or otherwise, without prior written consent of Eichholtz B.V. or The Metropolitan Museum of Art.



Follow us
on instagram

Eichholtz USA

275 North Elm Street, Suite 240,
High Point, NC 27262,
The United States of America

Eichholtz.com/USA
Phone: +1 336 886 1142
Email: info@eichholtzusa.com

Disclaimer

Please note that certain pieces featured in this magazine may be discontinued or unavailable in your region. Product specifications - including prices, colors, and materials - are subject to change. For the latest information on our collection, we invite you to visit our website or connect with one of our sales representatives.



The Metropolitan
Museum of Art



THE
MET

E I C H H O L T Z

EICHHOLTZ DESIGNS AND MANUFACTURES LUXURY FURNITURE, LIGHTING,
ACCESSORIES, ART & OBJECTS, RUGS, OUTDOOR FURNITURE AND MORE.
WITH AN EXTENSIVE PRODUCT RANGE IN A VARIETY OF DESIGN STYLES,
WE CREATE EXCLUSIVE LIFESTYLE INTERIORS WITH GLOBAL APPEAL.