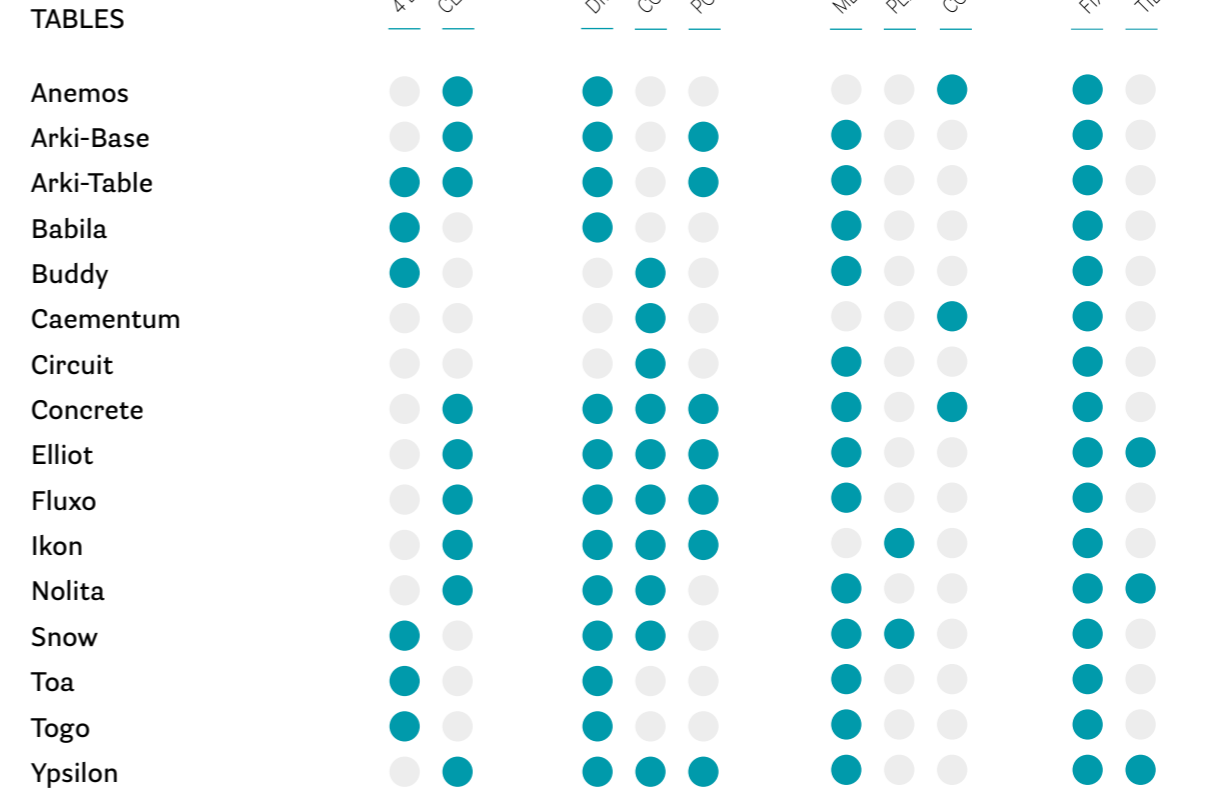
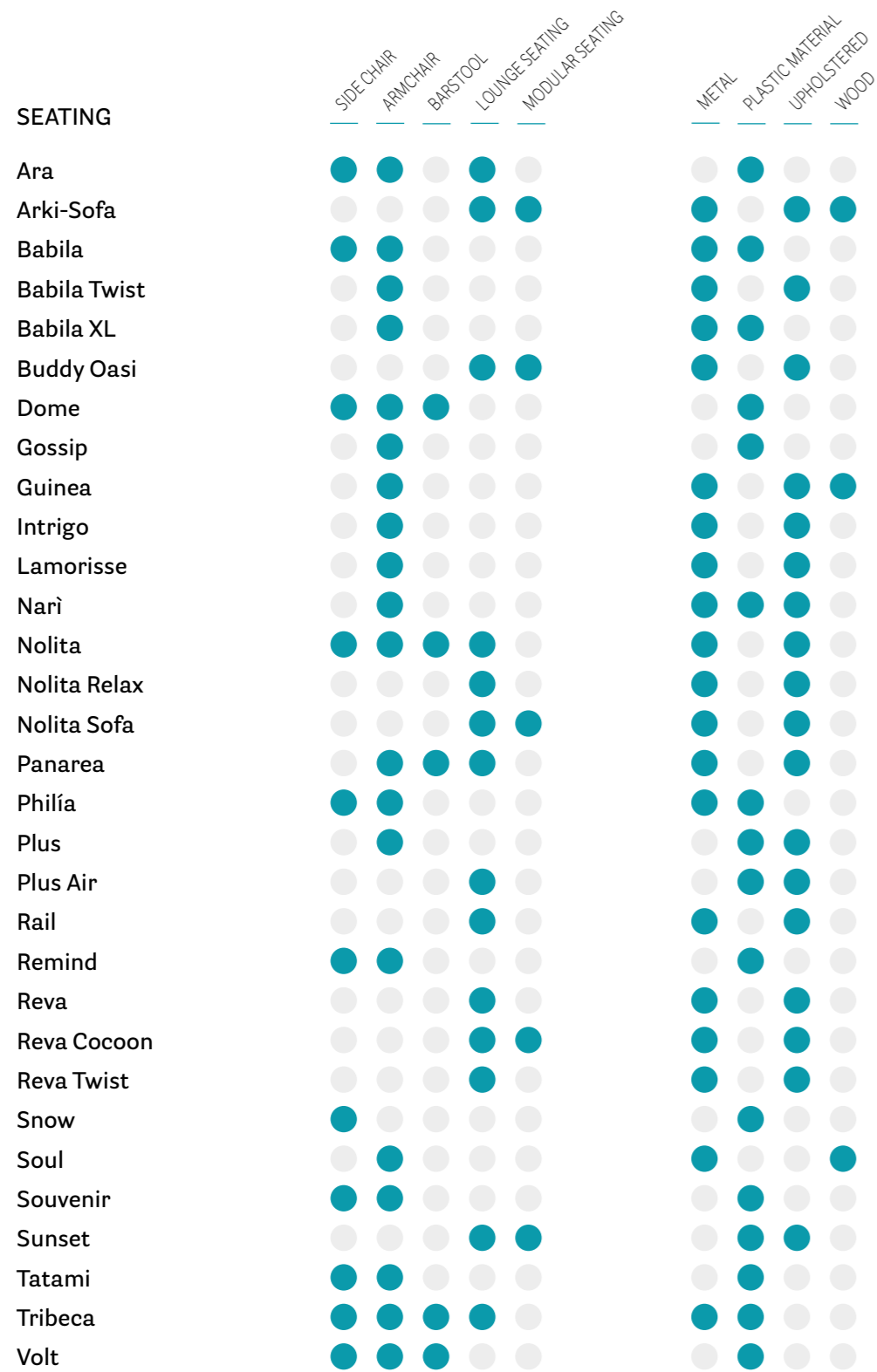


PEDRALI®



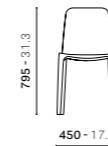
Chart of categories and materials

Guida alle tipologie e ai materiali



Legend

Legenda



All dimensions are expressed in millimeters and inches
Tutte le dimensioni sono espresse in millimetri e pollici



Stackable product
Prodotto impilabile



Product suitable for outdoor use
Prodotto adatto per utilizzo in esterni



Product with fire-retardant finish
Prodotto con finitura ignifuga



Luminous product
Prodotto luminoso



CATAS certified product
Prodotto certificato CATAS



GREENGUARD certified product
Prodotto certificato GREENGUARD



Declaration of European conformity
Dichiarazione di conformità Europea

Index / Indice

SEATING

PRODUCT NAME NOME PRODOTTO	PAGE PAGINA
Ara	316
Arki-Sofa	114
Babila	280
Babila Twist	288
Babila XL	283
Buddy Oasi	064
Dome	266
Gossip	298
Guinea	050
Intrigo	256
Lamoris	036
Nari	182
Nolita	214
Nolita Relax	244
Nolita Sofa	234
Panarea	010
Philia	172
Plus	308
Plus Air	308
Rail	132
Remind	142
Reva	106
Reva Cocoon	078
Reva Twist	096
Snow	350
Soul	154
Souvenir	162
Sunset	304
Tatami	326
Tribeca	194
Volt	336

TABLES

PRODUCT NAME NOME PRODOTTO	PAGE PAGINA
Anemos	043
Arki-Base	268
Arki-Table	344
Babila	296
Buddy	078
Caementum	022
Circuit	203, 239
Concrete	261
Elliot	142, 163
Fluxo	143
Ikon	044, 180, 328, 336
Nolita	214
Snow	350
Toa	036, 050
Togo	334
Ypsilon	323

LIGHTING & COMPLEMENTS

PRODUCT NAME NOME PRODOTTO	PAGE PAGINA
Giravolta	356
Happy Apple	364
Kado	368
Time Out	366
Twiny	122
Outdoor finishes / Finiture outdoor	372

Panarea

Mediterranean breeze

DESIGN
CMP Design, 2020

EN— The idea behind Panarea is rooted in the Mediterranean coastline and brings to mind the colours and the refreshing summer breeze of a dinner on a terrace overlooking the sea. The wide and curved backrest is woven in polypropylene cord which creates an original geometrical pattern and wraps around the tubular steel frame as far as the armrests. The lounge armchair comes with a wide seat and a high backrest.

IT— Panarea nasce da un'idea di paesaggio costiero mediterraneo, che riporta alla mente i colori e la brezza rinfrescante di una cena all'aria aperta in una terrazza affacciata sul mare e la luce conciliante e ristoratrice della stagione estiva. Lo schienale ampio e accogliente è intrecciato in corda di polipropilene che, nella sua originale geometria, crea una raffinata greca e avvolge il tubo del telaio in acciaio, coprendo anche i braccioli. La poltrona lounge è dotata di una seduta molto generosa e di uno schienale alto.





ARMCHAIR

Handcrafted twine in polypropylene cord
Intreccio artigianale in corda di polipropilene

Resistant to bacteria, sunlight, humidity and chlorine
Resistente a batteri, luce solare, umidità e cloro



ARMCHAIR

Cushion in dry-feel polyurethane foam covered in fabric made from the same yarn used for the woven element
Cuscino imbottito in poliuretano espanso drenante rivestito con un tessuto realizzato con il medesimo filato dell'intreccio



3675



3675 + 3675.8

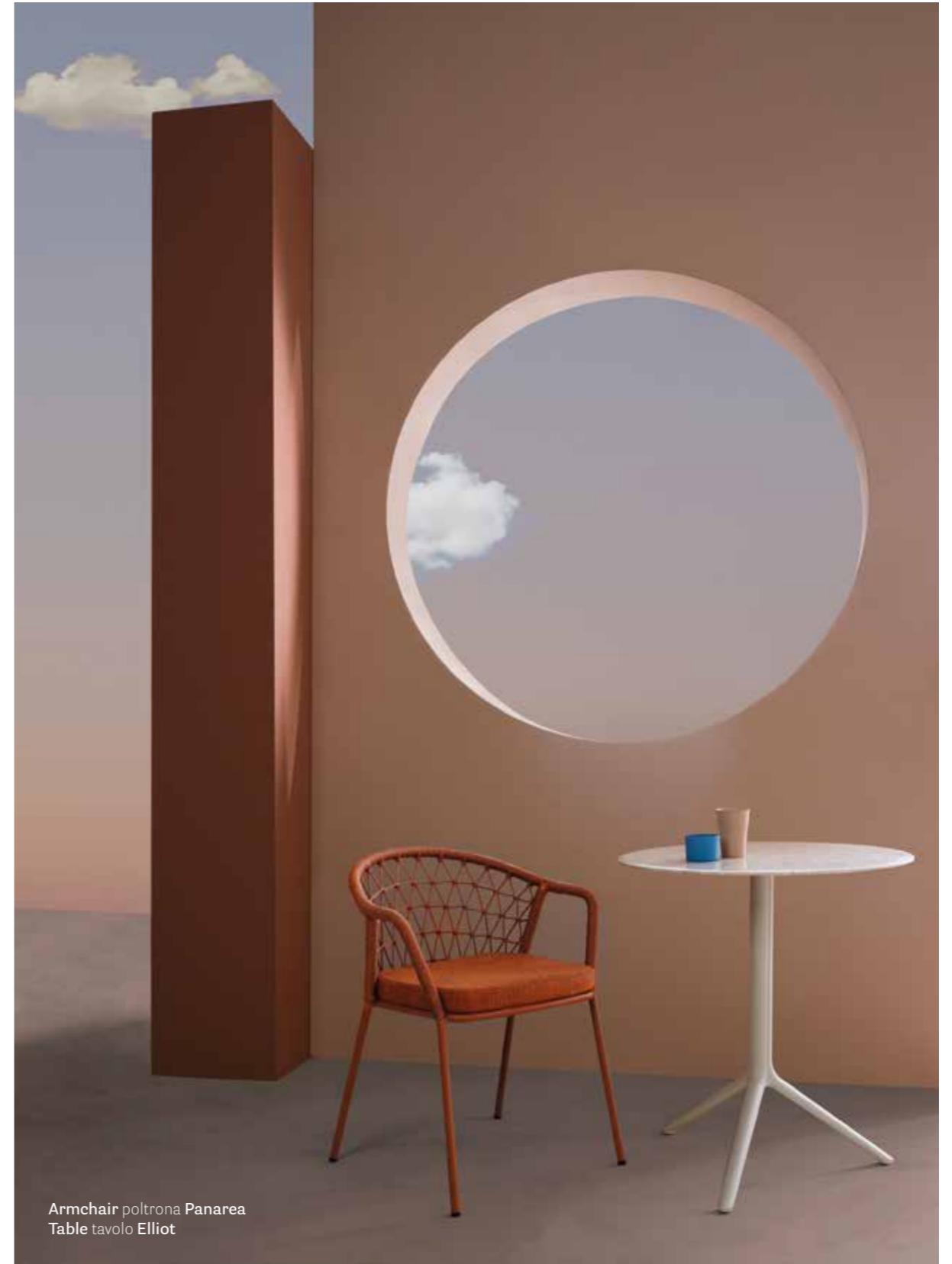
ARMCHAIR



Stackable
Impilabile



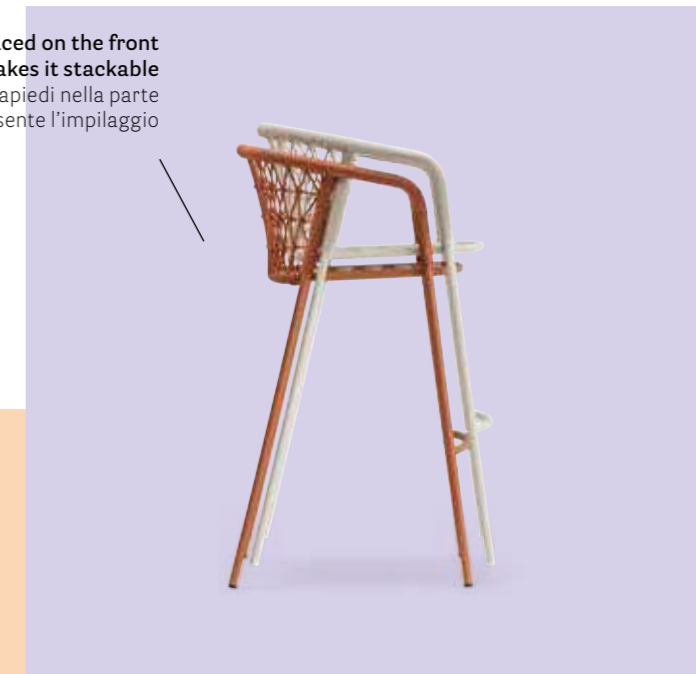
LIVING





Barstool sgabello Panarea
 Armchair poltrona Panarea
 Table tavolo Elliot
 Lighting lampada Giravolta

The footrest placed on the front
 makes it stackable
 La presenza del poggiatesta nella parte
 anteriore ne consente l'impilaggio



Seat height
 Altezza seduta
 30.3 in, 770 mm

3678

LOUNGE ARMCHAIR



Steel tube frame powder coated for outdoor use
Struttura in tubo d'acciaio verniciato per esterno
Ø 0.78 in, 20 mm



LOUNGE ARMCHAIR



Polyester lumbar cushion upholstered with fabric suitable for outdoor use
Cuscino lombare in poliester rivestito con tessuto adatto ad uso esterno

3679



CMT_46X35X42 + CMT_40X30X35

COFFEE TABLE



Glossy finish
Finitura lucida



COFFEE TABLE



Coffee table tavolino Caementum



Da Vittorio

Bergamo, Italy

Project: Restaurant

Products: Panarea lounge armchair,
Reva Twist sofa, Buddy coffee table

Khufu's restaurant

Giza, Egypt

Project: Restaurant

Architect: Style Design Architects

Products: Panarea armchair, Arki-Table





#pedralitales

Noto, Italy

Project: 2024 adv campaign

Products: Panarea armchair

Hotel Le Dune Piscinas

Ingurto, Italy

Project: Hotel

Products: Panarea armchair and lounge armchair, Elliot table and coffee table, Reva Twist sofa and lounge armchair





Private House

Herent, Belgium

Project: Private House

Products: Panarea armchair,
Arki-Table

Dimore Marinare

Trani, Italy

Project: Restaurant

Architect: Viviane Madre

Products: Panarea armchair,
Nolita table





Private Home Sarnico

Sarnico, Bergamo, Italy

Project: Private House

Architect: LART Architetti

Products: Panarea armchair and lounge armchair, Arki-Table, Reva Twist sofa, Nolita coffee table, Giravolta lighting



Hotel Mòn Sant Benet

Bages, Barcelona, Spain

Project: Hotel

Architect: Borros Interiorisme

Products: Panarea lounge armchair, Caementum coffee table



3675

Armchair, steel frame, cord profile backrest



3679

Lounge armchair, steel frame, cord profile backrest



3678

Barstool, steel frame, cord profile backrest



3675.8

Lumbar cushion only
WIDTH: 80 - 3.1



FINISHES / FINITURE

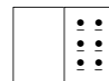


steel / acciaio

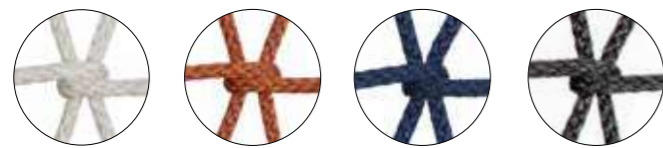


fabrics / tessuti

→ see page 374
guarda pagina 374



cord profile in the same colour of the frame / intreccio in corda in tinta con il telaio



for NPE colour frame, cord profile is grey
per il colore del telaio NPE, l'intreccio della corda è grigio

BE TE BL GA

AWARDS / PREMI

CERTIFICATES / CERTIFICAZIONI



Safety, strength and durability tests / Prove di sicurezza, resistenza e durata
EN 1728:2012+AC2013 — EN 581-1:2017

CMT_40X30X35

Concrete coffee table



CMT_46X35X42

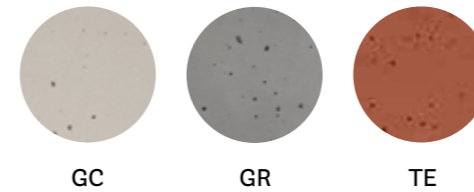
Concrete coffee table



FINISHES / FINITURE

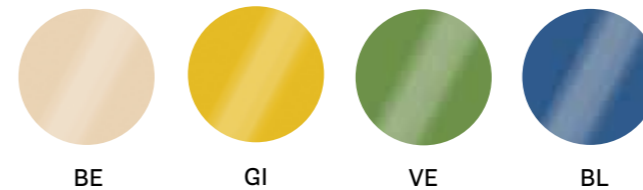


concrete / cemento



GC GR TE

glossy concrete / cemento lucido



BE GI VE BL

Lamorisse

Up to the sky!

DESIGN
CMP Design, 2022

EN — Lamorisse is an armchair designed for the outdoors: for a waterfront veranda, shaded outdoor areas, for a poolside table, and even on a ship deck. Its main feature is the contrast between the sober shape of the supporting frame and the use of a lavish, enveloping cushion. All the elements of Lamorisse are distinct, independent and detachable, therefore easily separable during disposal.

IT — Lamorisse è una poltrona pensata per stare all'aria aperta: in una veranda lungomare, in dehor ombreggiati, attorno ad una tavola a bordo piscina e persino sul ponte di una nave. La sua caratteristica principale è il contrasto tra la struttura portante, un telaio dalla forma sobria, ed il cuscino ricco e accogliente. Tutti gli elementi di Lamorisse sono distinti, indipendenti e svincolati, perciò facilmente separabili in fase di dismissione.



Armchair poltrona Lamorisse
Table tavolo Toa



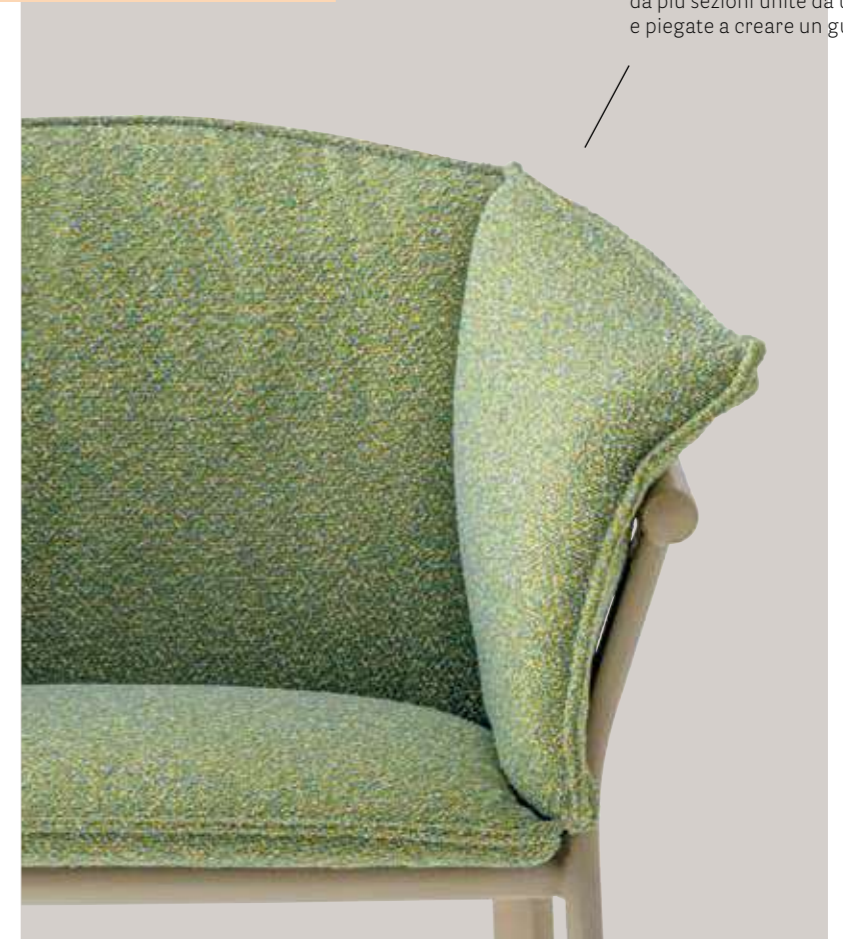


Armchair poltrona Lamorisse
Table tavolo Toa



3685

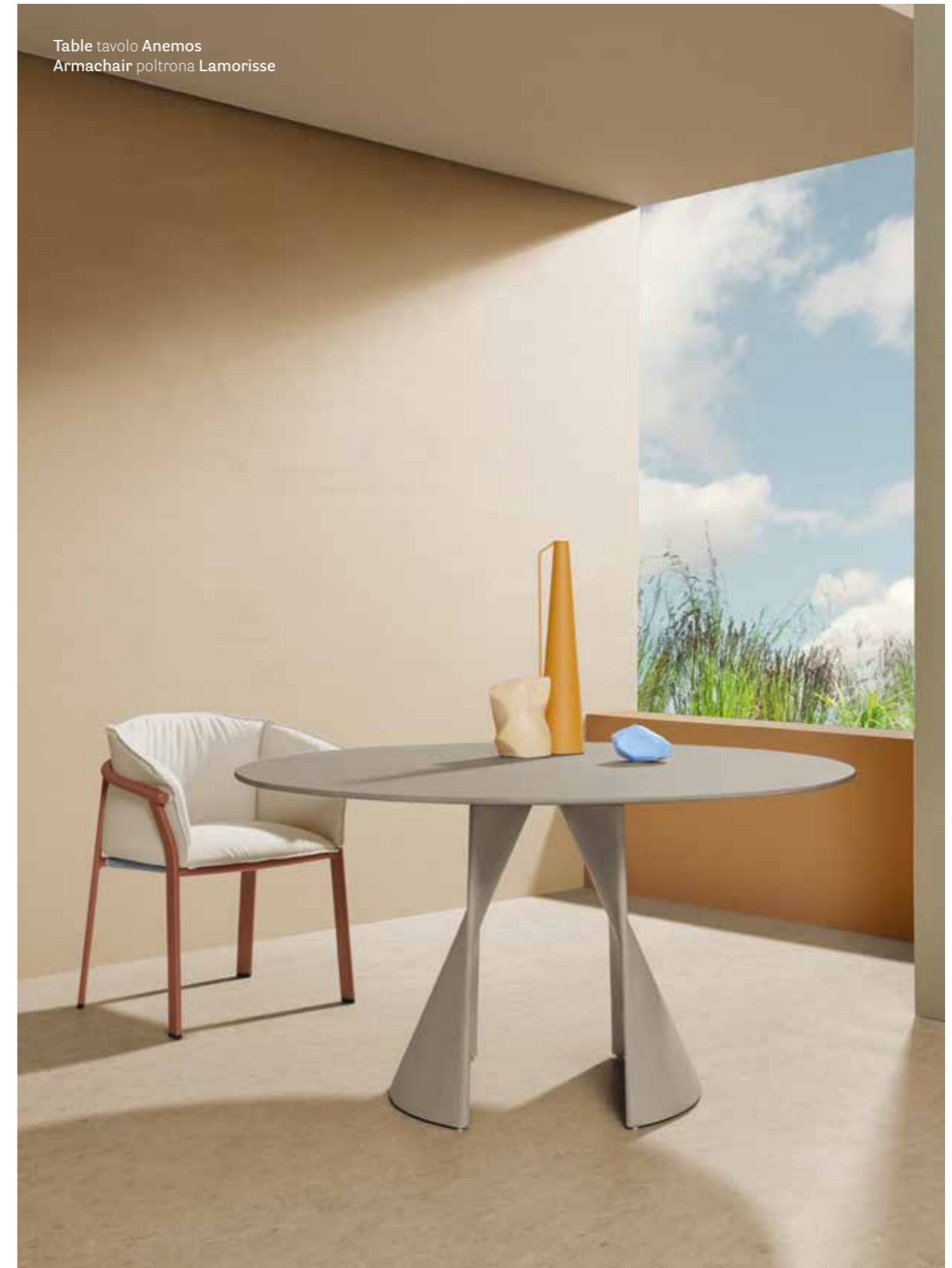
The cushion consists of multiple sections joined by a zip and folded to create a shell
Il cuscino è composto da più sezioni unite da una zip e piegate a creare un guscio



ARMCHAIR



LIVING



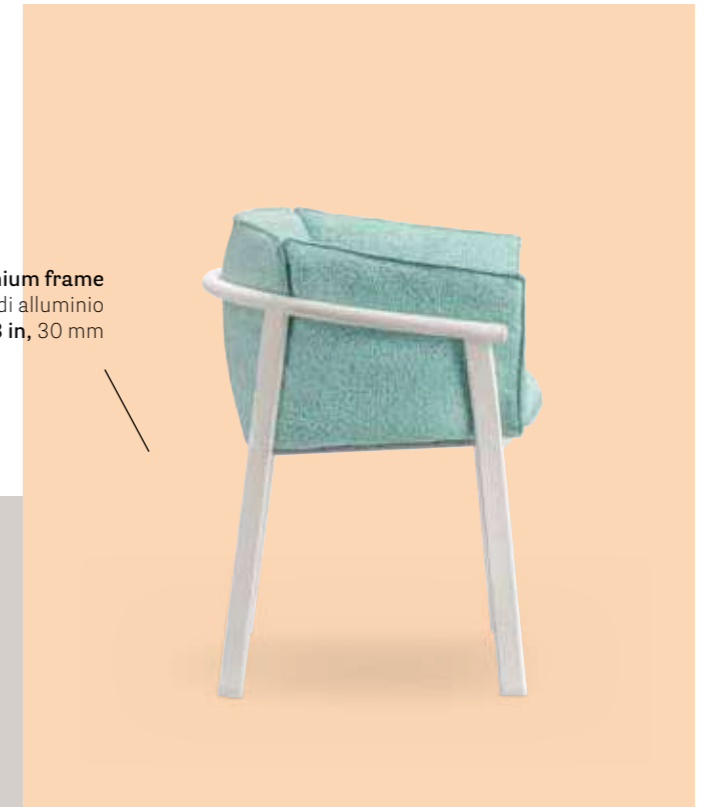
LIVING



Table tavolo Ikon
Armchair poltrona Lamorisse

ARMCHAIR

Extruded aluminium frame
Struttura in estruso di alluminio
Ø 1.18 in, 30 mm



Oval legs
Gambe a
sezione ovale
1.77x0.63 in
45x16 mm



3684



Private villa in Sicily

Noto, Italy

Project: Private villa
Products: Lamorisse armchair, Ikon table, Twiny rug



Living Corriere

Project: shooting
 Products: Toa table, Lamorisse armchair



SIZES / DIMENSIONI

mm - in

3684

Armchair with extruded aluminium frame; seat and back cushion in polyurethane foam, without armrests



3685

Armchair with extruded aluminium frame; seat and back cushion in polyurethane foam, with armrests

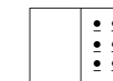


FINISHES / FINITURE



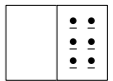
fabrics / tessuti

→ see page 374
 guarda pagina 374



powder coated / verniciato

→ see page 372
 guarda pagina 372



CERTIFICATES / CERTIFICAZIONI

Safety, strength and durability tests /
 Prove di sicurezza, resistenza e durata
 EN 1728:2012+AC2013 — EN 16139:2013 level 2

AWARDS / PREMI



Guinea

A tropical allure

DESIGN
CMP Design, 2023

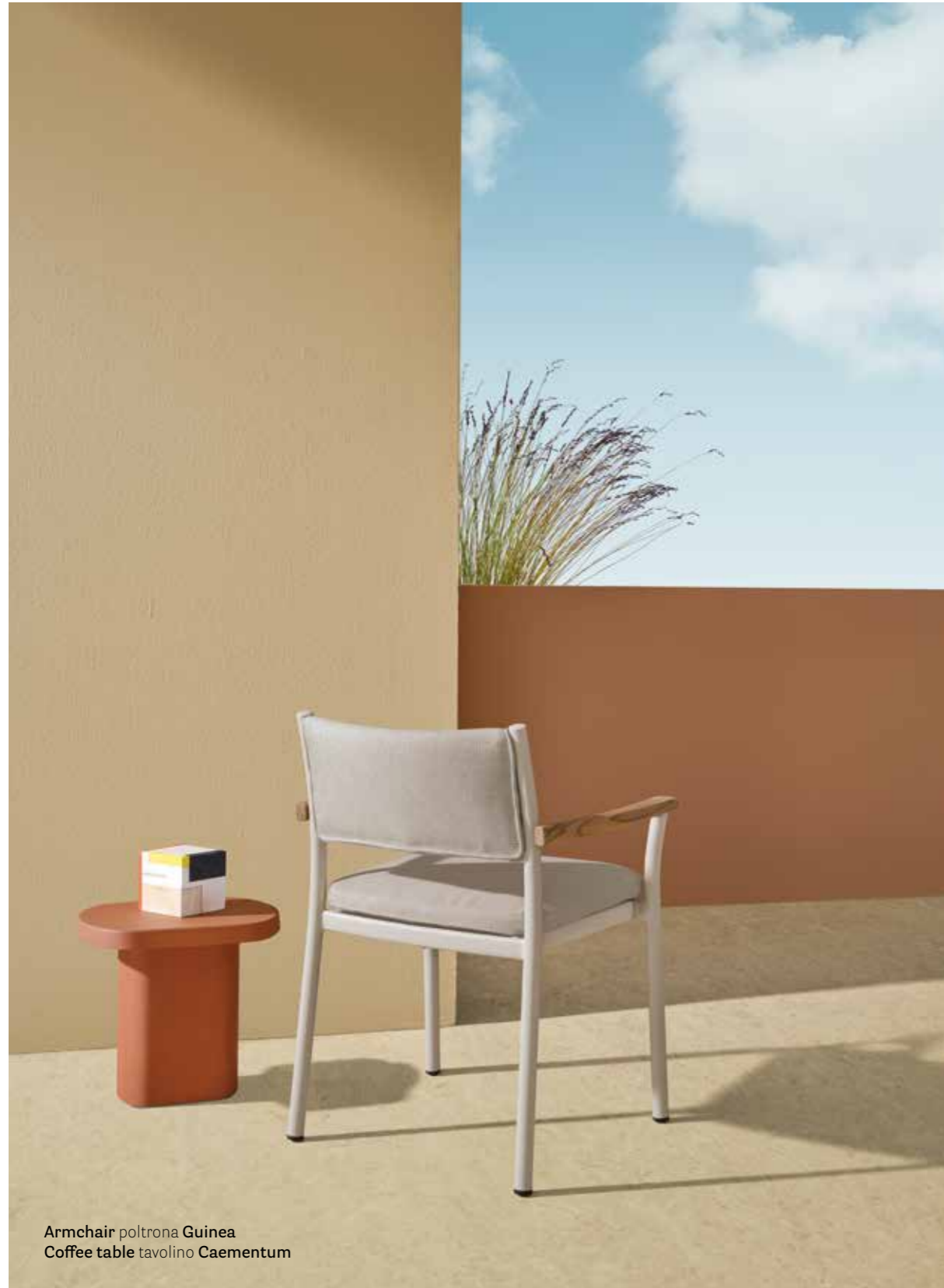
EN — Guinea is an aluminium outdoor armchair with an iconic allure that evokes the concept of lightness and transparency. The aluminium frame combines with a seat in waterproof textile mesh on which rests a soft, removable cushion. Guinea can be customised in various configurations: the version with a waterproof textile mesh backrest is reminiscent of the traditional director's chairs, the version with the backrest in aluminium slats features more traditional, archetypical forms.

IT — Guinea è una poltrona in alluminio per outdoor che suggerisce un'idea di leggerezza fisica e visiva oltre che iconica. La struttura portante in alluminio è abbinata ad una seduta realizzata in rete tessile impermeabile sulla quale appoggia un soffice cuscino removibile. Guinea può essere personalizzata con diverse configurazioni: la versione con schienale in rete tessile impermeabile ricorda le tradizionali sedie da regista, la versione con schienale con doghe in alluminio è definita da forme più tradizionali e archetipe.

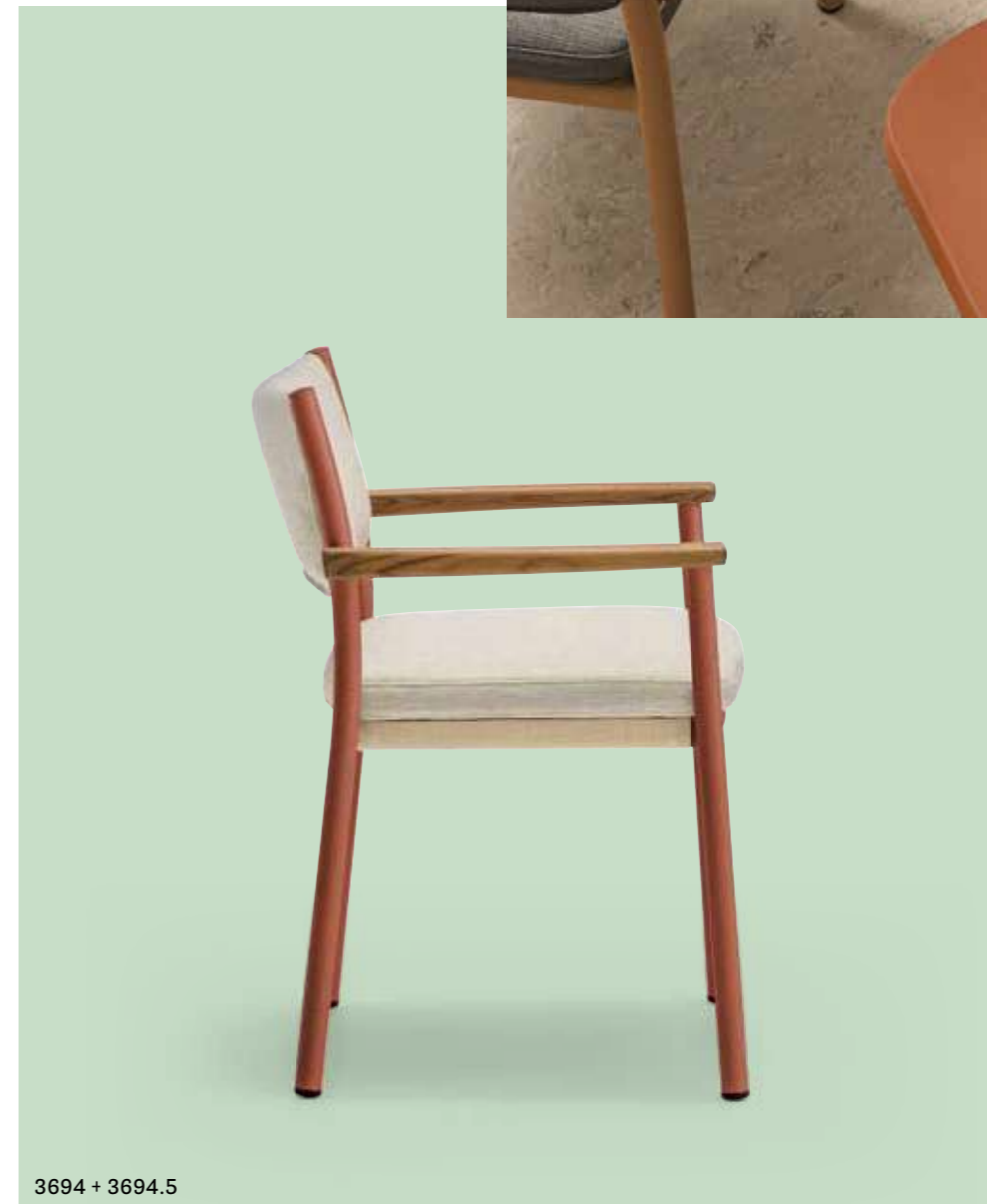


Armchair poltrona Guinea
Table tavolo Toa





Armchair poltrona **Guinea**
Coffee table tavolino **Caementum**



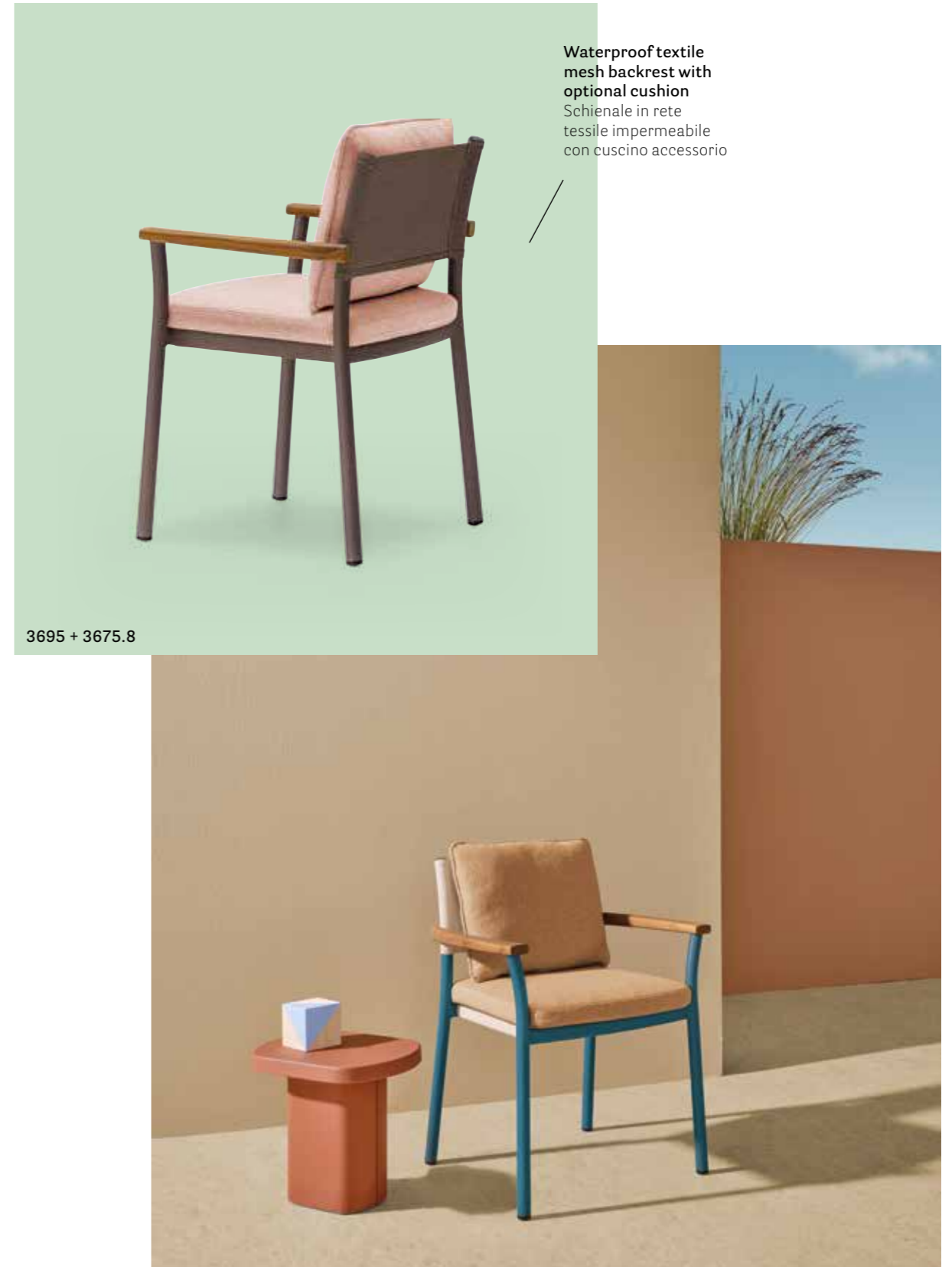
3694 + 3694.5

ARMCHAIR



Aluminium backrest
with slats, upholstered
Schienale a doghe in
alluminio rivestito

ARMCHAIR



Waterproof textile
mesh backrest with
optional cushion
Schienale in rete
tessile impermeabile
con cuscino accessorio

3695 + 3675.8

ARMCHAIR

FSC® C114358 certified
teak armrests, oil treated
Braccioli in teak certificato
FSC® C114358 trattato all'olio



ARMCHAIR

Stackable armchair up to six pieces
Poltrona impilabile fino a sei pezzi





#PedraliBacktoNature

Salone del Mobile.Milano 2023
Milan, Italy

Project: Exhibition stand

Architect and Styling: DWA Design Studio

Products: Guinea armchair, Nolita coffee table,
Giravolta lighting

ARMCHAIR



SIZES / DIMENSIONI

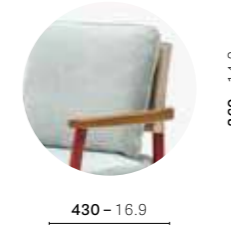
3695

Armchair with extruded aluminium frame;
seat cushion in polyurethane foam and back
in waterproof textile mesh



3675.8

cushion only
WIDTH: 80 - 3.1



3694

Armchair with extruded aluminium frame;
seat cushion in polyurethane foam



3694.5

cushion only
WIDTH: 65 - 2.6

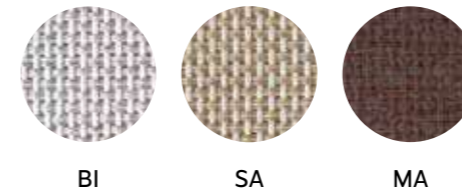


FINISHES / FINITURE

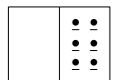


waterproof textile mesh / rete tessile impermeabile

fabrics and powder coated / tessuti e verniciato



→ see from page 372
guarda da pagina 372



CERTIFICATES / CERTIFICAZIONI

Safety, strength and durability tests /
Prove di sicurezza, resistenza e durata
EN 1728:2012+AC2013 — EN 16139:2013 level 2



Buddy Oasi

Friendly spirit

DESIGN
Busetti, Garuti, Redaelli, 2024

EN — Characterised by its welcoming spirit, Buddy Oasi is a furnishing solution that further expands the collection, opening to the outdoor world. Generously sized poufs and sofas maintain the contrast between the bold volumes of the seat, and the lightness of the legs typical of the Buddy family. Buddy Oasi's distinguishing features are the movable injected polyurethane foam backrests with a soft, organic shape that can be easily and freely positioned on the seat to create multiple configurations. A ballast and a non-slip fabric give the backrests stability. Buddy Oasi is designed to furnish outdoor environments, thanks to a completely waterproof cover and removable outdoor fabrics linings ensuring easy maintenance operations. Available in five sizes and two different heights, Buddy Oasi offers the freedom to create multiple layouts.

IT — Buddy Oasi è la soluzione d'arredo per l'esterno che amplia ulteriormente la collezione definita da un design amichevole, aprendosi verso l'esterno. Un sistema di pouf e divani dalle generose dimensioni, che mantengono il contrasto tra i volumi pieni della seduta e la leggerezza delle gambe tipico della famiglia Buddy. Il tratto distintivo di Buddy Oasi sono gli schienali mobili in schiumato poliuretano dalla forma morbida e allungata che possono essere posizionati facilmente e liberamente sul pouf, permettendo di creare diverse configurazioni in base alle diverse esigenze. La presenza di una zavorra e di un tessuto antiscivolo, conferiscono agli schienali stabilità. Buddy Oasi è pensato per arredare ambienti outdoor, grazie ad una fodera completamente impermeabile e al rivestimento con un tessuto per esterno sfoderabile. Disponibile in cinque dimensioni e due diverse altezze, Buddy Oasi permette di creare liberamente molteplici combinazioni.





SOFA



The backrests can be positioned on the pouf to create multiple configurations
Gli schienali possono essere posizionati sui pouf e permettono di creare diverse configurazioni



208E + 209E.3

SOFA

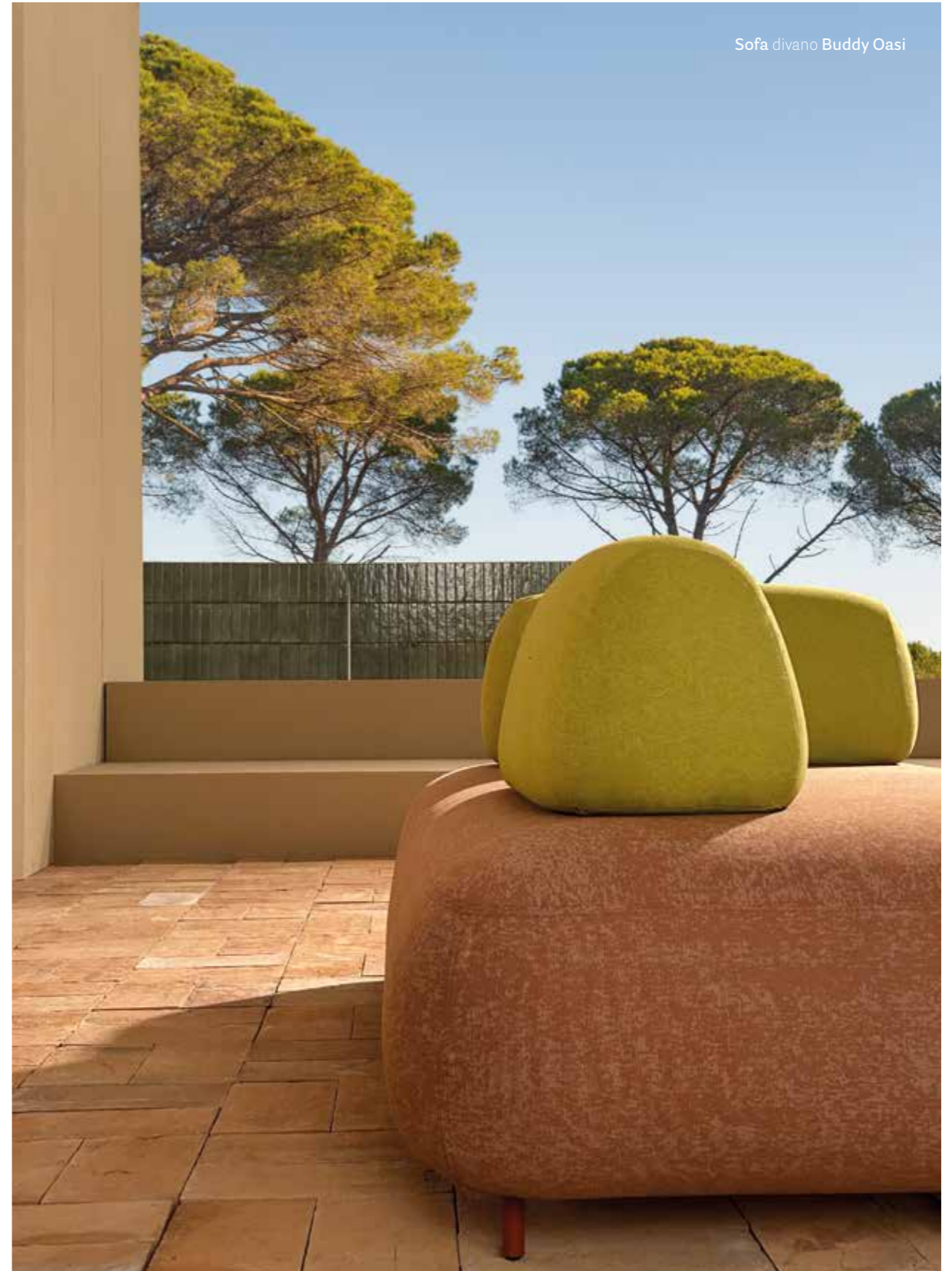
Sofa divano Buddy Oasi
Pouf Buddy
Coffee table tavolino Caementum



POUF — SOFA

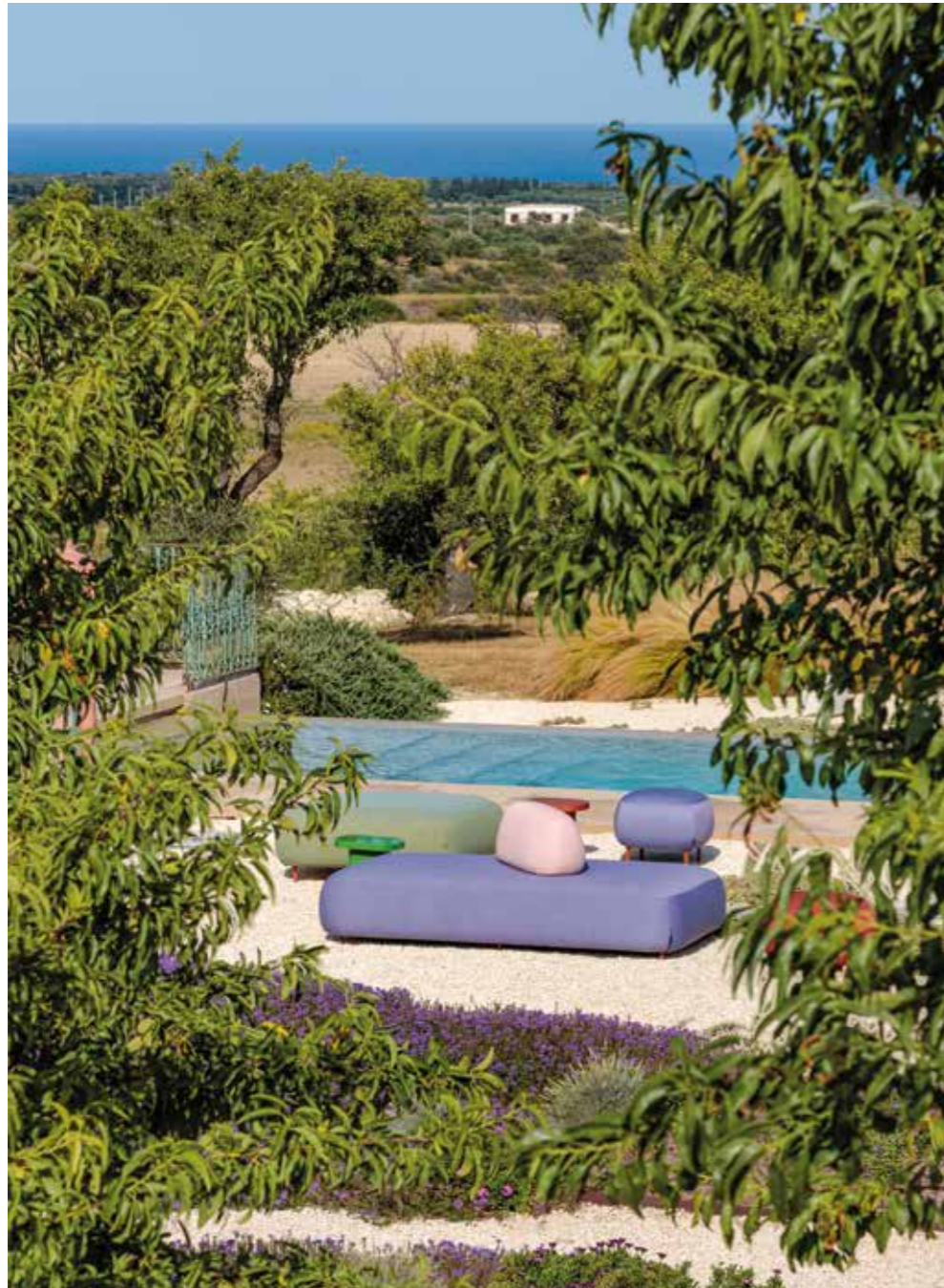


LIVING





Sofa divano Buddy Oasi
Pouf Buddy
Coffee table tavolino Caementum



Private villa in Sicily

Noto, Italy

Project: Private villa

Products: Buddy Oasi sofa, Buddy pouf, Caementum coffee table





#PedraliColoursofLightness

Salone Del Mobile.Milano 2024
Milan, Italy

Project: Exhibition stand

Architect and styling: DWA Design Studio

Products: Buddy Oasi sofa, Buddy pouf,
Caementum coffee table, Twiny rug

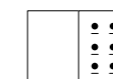
<p>206E Upholstered pouf, steel tube frame</p> 	<p>207E Upholstered pouf, steel tube frame</p> 	<p>209E.3 Upholstered backrest</p> 	
<p>208E Upholstered pouf, steel tube frame</p> 	<p>209E Upholstered pouf, steel tube frame</p> 	<p>209E Upholstered pouf, steel tube frame</p> 	<p>209E Upholstered pouf, steel tube frame</p> 
<p>210E Upholstered pouf, steel tube frame</p> 	<p>211E Upholstered pouf, steel tube frame</p> 	<p>212E Upholstered pouf, steel tube frame</p> 	<p>213E Upholstered pouf, steel tube frame</p> 
<p>214E Upholstered pouf, steel tube frame</p> 	<p>215E Upholstered pouf, steel tube frame</p> 		

FINISHES / FINITURE



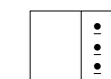
fabrics / tessuti

→ see page 374
guarda pagina 374



powder coated / verniciato

→ see page 372
guarda pagina 372



Reva Cocoon

Rêve et évasion

DESIGN
Patrick Jouin, 2022

EN — Born from the desire to create a flexible outdoor piece of furniture, Reva Cocoon is highly adaptable and configurable in a variety of ways to ensure comfort and personalisation, resulting in a new concept of elegance. Reva Cocoon is a system of lounge seats: sofas made up of linear and corner elements and chaise longues, with backrests in two different heights, woven with polypropylene cord. The high backrests of Reva Cocoon are defined by a double curvature embracing the perimeter frame in extruded aluminium.

IT — Nato dalla volontà di realizzare un arredo outdoor flessibile, Reva Cocoon si adatta e si compone in diversi modi per garantire comfort e personalizzazione, proponendo un nuovo concetto di eleganza. Reva Cocoon è un sistema di sedute lounge: divani composti da elementi lineari, ad angolo e chaise longue, con importanti schienali in due diverse altezze, ricoperti da un intreccio realizzato con una corda in polipropilene. Gli alti schienali di Reva Cocoon sono definiti da una doppia curvatura e abbracciano puntualmente la cornice perimetrale in estruso di alluminio.



LIVING



Corner sofa divano angolare Reva Cocoon
Coffee table tavolino Caementum
Lighting lampada Giravolta
Accessory cushion cuscino accessorio

SOFA



3002 + 3005



Polypropylene cord made
in Italy by expert craftsmen
Corda in polipropilene realizzata
in Italia da esperti artigiani

POUF — ARMCHAIR



CHAISE LONGUE — SOFA





RVC016



RVC027 + 3002



Corner sofa divano angolare Reva Cocoon



Corner sofa divano angolare Reva Cocoon
 Lounge armchair poltrona lounge Panarea
 Coffee table tavolino Caementum
 Coffee table tavolino Buddy
 Lighting lampada Giravolta

SOFA

SOFA

Seat cushions with a polyurethane foam core, backrest cushions in polyester wrapped in fully waterproof lining
Cuscini della seduta con anima in poliuretano espanso, cuscini degli schienali in poliestere avvolti da una fodera completamente impermeabile



RVC033 + RVC026 + RVC014



Private villa in Sicily

Noto, Italy

Project: Private villa

Products: Reva Cocoon sofa, Circuit coffee table, Giravolta lighting, Panarea lounge armchair, Twiny rug



#PedraliBacktoNature

HostMilano 2023
Milan, Italy

Project: Exhibition stand

Architect and styling: DWA Design Studio

Products: Reva Cocoon sofa, Panarea lounge armchair, Caementum coffee table, Buddy coffee table, Giravolta lighting, Hevea pot-holder

RVC010

Pouf, aluminium frame and legs



RVC012

Linear armchair with low backrest, aluminium frame and legs
DEPTH: 880 - 34.6



RVC011

Linear armchair with high backrest, aluminium frame and legs
DEPTH: 880 - 34.6



RVC015

Right corner armchair with low backrest, aluminium frame and legs
DEPTH: 880 - 34.6



RVC016

Left corner armchair with low backrest, aluminium frame and legs
DEPTH: 880 - 34.6



RVC013

Right corner armchair with high backrest, aluminium frame and legs
DEPTH: 880 - 34.6



RVC014

Left corner armchair with high backrest, aluminium frame and legs
DEPTH: 880 - 34.6



RVC036

Left corner chaise longue with low backrest, aluminium frame and legs
DEPTH: 880 - 34.6



RVC035

Right corner chaise longue with low backrest, aluminium frame and legs
DEPTH: 880 - 34.6



RVC034

Left corner chaise longue with high backrest, aluminium frame and legs
DEPTH: 880 - 34.6



RVC033

Right corner chaise longue with high backrest, aluminium frame and legs
DEPTH: 880 - 34.6



RVC022

Linear sofa with low backrest, aluminium frame and legs
DEPTH: 880 - 34.6



RVC021

Linear sofa with high backrest, aluminium frame and legs
DEPTH: 880 - 34.6



RVC045 - RVC048

Right corner and linear sofa with low backrest, aluminium frame and legs (with/without corner cushion)
DEPTH: 880 - 34.6



RVC046 - RVC049

Left corner and linear sofa with low backrest, aluminium frame and legs (with/without corner cushion)
DEPTH: 880 - 34.6



RVC025

Right corner and linear sofa with high backrest, aluminium frame and legs
DEPTH: 880 - 34.6



RVC026

Left corner and linear sofa with high backrest, aluminium frame and legs
DEPTH: 880 - 34.6



RVC023 - RVC028

Right corner and linear sofa with high backrest, aluminium frame and legs (with/without corner cushion)
DEPTH: 880 - 34.6



RVC024 - RVC029

Left corner and linear sofa with high backrest, aluminium frame and legs (with/without corner cushion)
DEPTH: 880 - 34.6



RVC027

Right and left corner sofa with high backrest, aluminium frame and legs
DEPTH: 880 - 34.6



RVC047

Right and left corner sofa with low backrest, aluminium frame and legs
DEPTH: 880 - 34.6



Protective covers available

Disponibili coperture protettive

Pillowcases for lateral, seat and backrest cushions available

Disponibili federe cuscini laterali, sedile e schienale

We suggest to remove the cushions over night and in rainy days

Si consiglia di ritirare i cuscini durante la notte e in caso di pioggia

ACCESSORI / ACCESSORIES



3001

Cushion
DEPTH: 200 - 7.9



3002

Cushion
DEPTH: 200 - 7.9



3004

Cushion
DEPTH: 170 - 6.7



3005

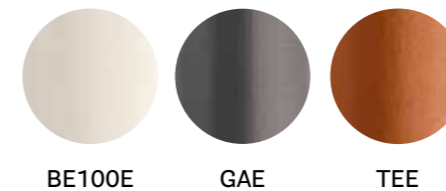
Cushion
DEPTH: 170 - 6.7



FINISHES / FINITURE



aluminium / alluminio

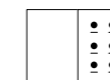


cord / corda



fabrics / tessuti

→ see page 374
guarda pagina 374



AWARDS / PREMI



Reva Twist

Rêve et Évasion

DESIGN
Patrick Jouin, 2020

EN — The elegant three-seater sofa and lounge armchair feature four tapered legs in die-cast aluminium integrated with the perimeter frame in extruded aluminium. The stainless steel backrest and armrests are woven with a flat cord in weather-resistant polypropylene, for a more natural appearance.

IT — L'elegante divano a tre posti e la poltrona lounge sono caratterizzati da quattro gambe affusolate in pressofusione di alluminio integrate in una cornice perimetrale in estruso di alluminio. Lo schienale e i braccioli in acciaio inox sono ricoperti da un intreccio realizzato con una corda piatta in polipropilene resistente agli agenti atmosferici e al contempo capace di garantire una resa più naturale.





The backrest and armrests are removable and can be stacked
 Lo schienale e i braccioli possono essere smontati al fine di consentirne l'impilaggio



Steel backrest and armrests woven with a flat cord in polypropylene
 Schienale e braccioli in acciaio intrecciati con corda piatta in polipropilene



LOUNGE ARMCHAIR



SOFA

Extruded aluminium frame
Cornice in estruso di alluminio



Removable cushions, water resistant fabric
Cuscini sfoderabili in tessuto resistente all'acqua

REVA/2_D + 3005 + 3001

SOFA



La Mamounia

Marrakech, Morocco

Project: Hotel & Restaurant

Architect: Jouin Manku

Products: Reva Twist lounge
armchair



Hotel Le Dune Piscinas

Ingurtosu, Italy

Project: Hotel

Products: Panarea armchair,
Elliot table and coffee table, Reva Twist armchair

SIZES / DIMENSIONI

mm - in

REVA/2_P

Lounge armchair, aluminium frame and legs, polypropylene cord



REVA/2_D

Three seats sofa, aluminium frame and legs, polypropylene cord



3005

Optional side pillow



Protective covers available

Disponibili coperture protettive

Pillowcases for lateral, seat and backrest cushions available

Disponibili federe cuscini laterali, sedile e schienale

We suggest to remove the cushions over night and in rainy days

Si consiglia di ritirare i cuscini durante la notte e in caso di pioggia

ACCESSORI / ACCESSORIES



3001

Cushion

DEPTH: 200 - 7.9



3002

Cushion

DEPTH: 200 - 7.9



3004

Cushion

DEPTH: 170 - 6.7



3005

Cushion

DEPTH: 170 - 6.7



FINISHES / FINITURE



aluminium / alluminio

cord / corda

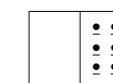


fabrics / tessuti

CERTIFICATIONS / CERTIFICAZIONI

→ see page 374

guarda pagina 374



Safety, strength and durability tests / Prove di sicurezza, resistenza e durata
EN 1728:2012+AC2013 — EN 581-1:2017 — EN 581-2:2015+AC2013

Reva

Rêve et Évasion

DESIGN
Patrick Jouin, 2017

EN — An elegant sofa, a lounge armchair and a sun-lounger: Reva is an outdoor collection featured by four tapered legs that support a perimetral aluminium frame.

IT — Un elegante divano, una poltrona lounge e un lettino da sole: Reva è una collezione per l'outdoor caratterizzata da una cornice perimetrale in alluminio sorretta da quattro gambe in pressofusione.



LEISURE

Sun lounger lettino Reva
Coffee table tavolino Buddy
Lighting lampada Giravolta



LOUNGE ARMCHAIR



Die-cast aluminium legs
Gambe in pressofusione
di alluminio

REVA_P + 3005

SOFA



Extruded
aluminium frame
Cornice in estruso
di alluminio

REVA_D + 3005

SUN LOUNGER

SUN LOUNGER



REVA_L + RAIL.23 + RAIL.30



Private House

Brescia, Italy

Project: Private House

Products: Reva lounge armchair and sun lounger, Buddy coffee table

SIZES / DIMENSIONI

mm - in

REVA_D

Three seats sofa, aluminium frame and legs



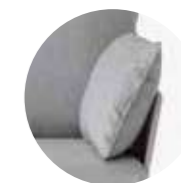
REVA_P

Lounge armchair, aluminium frame and legs



3005

Optional side pillow



REVA_L

Sun lounger, aluminium frame and legs, rear castors
WIDTH: 770 - 30.3
BACKREST GRADES: 0°, 13°, 23°, 33°, 43°



REVA_L.3

Cushion for sun lounger
WIDTH: 730 - 28.7



RAIL.30

Sun lounger roof
THICKNESS: 25 - 0.98



Accessory cushions available

Disponibili cuscini accessori

Protective covers available

Disponibili coperture protettive

Pillowcases for lateral, seat and backrest cushions available

Disponibili federe cuscini laterali, sedile e schienale

We suggest to remove the cushions over night and in rainy days

Si consiglia di ritirare i cuscini durante la notte e in caso di pioggia

FINISHES / FINITURE



aluminium / alluminio

waterproof textile mesh

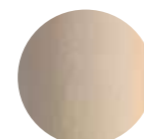
rete tessile impermeabile (armchair and sofa)

waterproof textile mesh

rete tessile impermeabile (sun lounger)



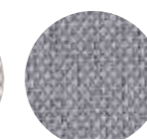
BI100E



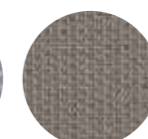
SA200E



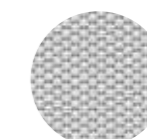
BI



GC



MA



BI



SA

fabrics / tessuti

CERTIFICATIONS / CERTIFICAZIONI

→ see page 374

guarda pagina 374



Safety, strength and durability tests / Prove di sicurezza, resistenza e durata
EN 1728:2012+AC2013 — EN 16139:2013 level 2 — EN 581-1:2017 —
EN 581-2:2015+AC2013

Arki-Sofa

A perfect balance

DESIGN
Pedrali R&D, 2022

EN — Arki-Sofa is an outdoor lounge seating system that encapsulates the comfort and elegance of an indoor sofa. Its geometrically shaped and generously thick cushions rest on a light structure supported by elastic belts. The seat is raised off the ground by stainless steel feet, while the backrests and armrests are characterised by distinctive teak detailing. Through the presence of linear modules and chaise longues, with Arki-Sofa multiple compositions can be created.

IT — Arki-Sofa è un sistema di sedute lounge per outdoor che racchiude il comfort e l'eleganza di un divano da interno. I cuscini dalle forme geometriche e dai generosi spessori appoggiano su una leggera struttura supportata da cinghie elastiche. La seduta resta sospesa da terra grazie a piedini in acciaio inox, mentre schienali e braccioli sono caratterizzati da un dettaglio distintivo in teak. Grazie alla presenza di moduli lineari e chaise longue, Arki-Sofa permette di creare molteplici composizioni.





Sofa divano Arki-Sofa
Coffee table tavolino Caementum
Accessory cushion cuscino accessorio



Steel tube and
teak structure
Struttura in tubo
d'acciaio e teak



AS0022

ARMCHAIR

"Plus" version with a deeper and wider seat
Versione "Plus" con seduta più profonda e ampia



ASP0012



AS0012

CHAISE LONGUE — SOFA



AS0031



ASP0022

SOFA

SOFA

Polyurethane foam padding with waterproof lining covered in outdoor fabric
Imbottito in schiumato poliuretano con fodera idrorepellente rivestita in tessuto per esterno



3001 + 3004



AS0031 + AS0121 + 3001



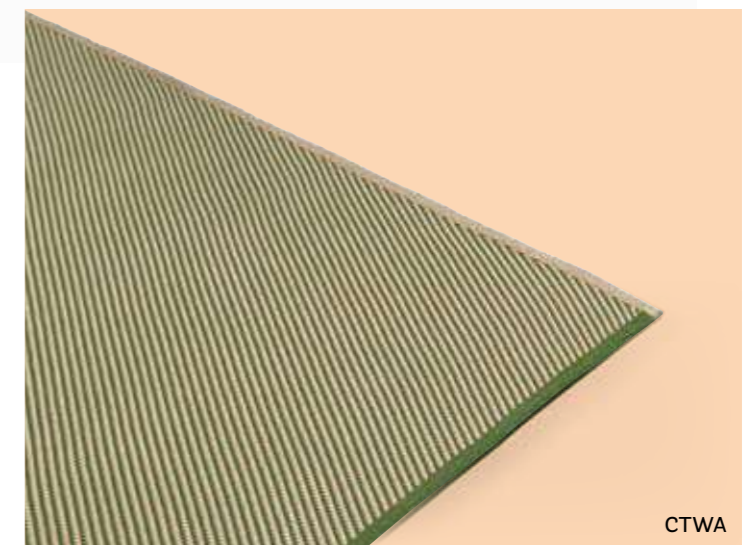
Sofa divano Arki-Sofa, Arki-Sofa Plus
 Coffee table tavolino Circuit
 Accessory cushion cuscino accessorio
 Rug tappeto Twiny



Outdoor rugs made from cord obtained by weaving a polypropylene yarn, strong yet soft
 Tappeti per outdoor realizzati con una corda ottenuta dall'intreccio di un filato di polipropilene, resistente ma al tempo stesso morbido



CTWB



CTWA

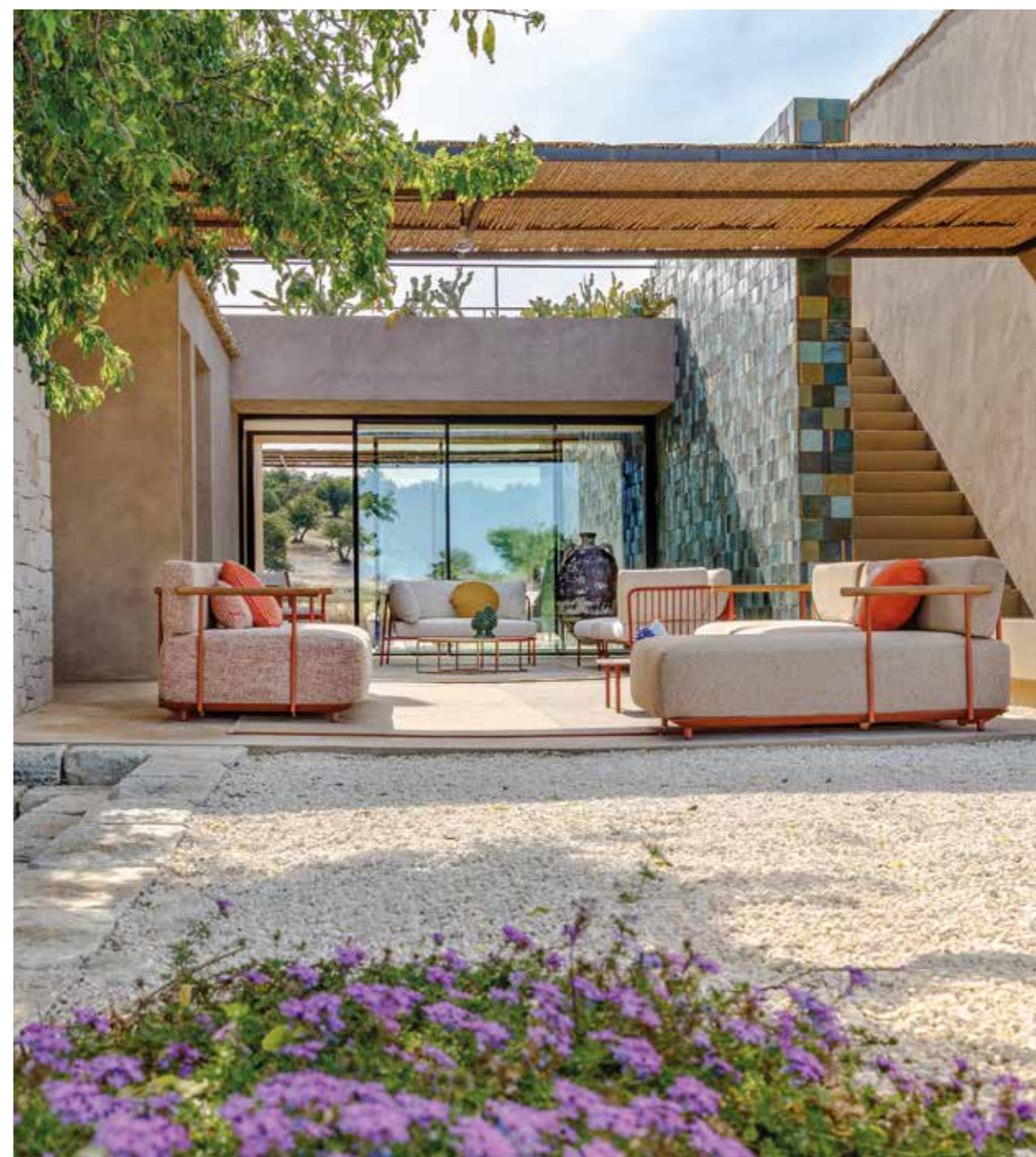


Private villa in Sicily

Noto, Italy

Project: Private villa

Products: Arki-Sofa and Arki-Sofa plus, Buddy coffee table, Nolita Sofa, Nolita Relax lounge armchair, Circuit coffee table, Twiny rug





#PedraliBacktoNature

Salone del Mobile.Milano 2023
Milan, Italy

Project: Exhibition stand
Architect and Styling: DWA Design Studio
Products: Arki-Sofa Plus, Buddy coffee table, Giravolta lighting

#PedraliNewHorizons

Salone del Mobile.Milano 2022
Milan, Italy

Project: Exhibition stand
Architect: CalviBrambilla
Stylist: Studio Salaris
Products: Arki-Sofa, Buddy coffee table



ARKI-SOFA

AS0040

Pouf, frame in extruded aluminium and steel tube



AS0010

Armchair without armrests, frame in extruded aluminium, steel tube and teak structure



AS0020

Sofa without armrests, frame in extruded aluminium, steel tube and teak structure



AS0111

Armchair with right or left armrest + side cushion, frame in extruded aluminium, steel tube and teak structure



AS0121

Sofa with right or left armrest + side cushion, frame in extruded aluminium, steel tube and teak structure



AS0012

Armchair with armrests, frame in extruded aluminium, steel tube and teak structure



AS0022

Sofa with armrests, frame in extruded aluminium, steel tube and teak structure



AS0030

Chaise longue, frame in extruded aluminium, steel tube and teak structure



AS0031

Chaise longue with right or left armrest, frame in extruded aluminium, steel tube and teak structure



ARKI-SOFA PLUS

ASP0010

Armchair without armrests, frame in extruded aluminium, steel tube and teak structure



ASP0020

Sofa without armrests, frame in extruded aluminium, steel tube and teak structure



ASP0111

Armchair with right or left armrest + side cushion, frame in extruded aluminium, steel tube and teak structure



ASP0121

Sofa with right or left armrest + side cushion, frame in extruded aluminium, steel tube and teak structure



ASP0012

Armchair with armrests, frame in extruded aluminium, steel tube and teak structure



ASP0022

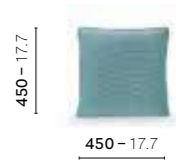
Sofa with armrests, frame in extruded aluminium, steel tube and teak structure





3001

Cushion
DEPTH: 200 - 7.9



3002

Cushion
DEPTH: 200 - 7.9



3004

Cushion
DEPTH: 170 - 6.7



3005

Cushion
DEPTH: 170 - 6.7

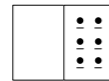


FINISHES / FINITURE



fabrics and powder coated / tessuti e verniciato

→ see from page 372
guarda da pagina 372



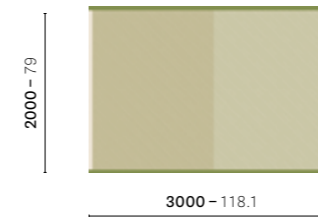
Protective covers available
Disponibili coperture protettive

Pillowcases for lateral, seat and backrest cushions available
Disponibili federe cuscini laterali, sedile e schienale

We suggest to remove the cushions over night and in rainy days
Si consiglia di ritirare i cuscini durante la notte e in caso di pioggia

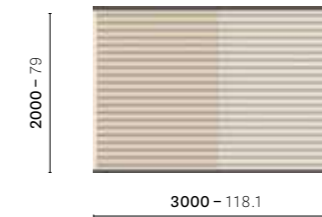
CTWA 300X200

Rug



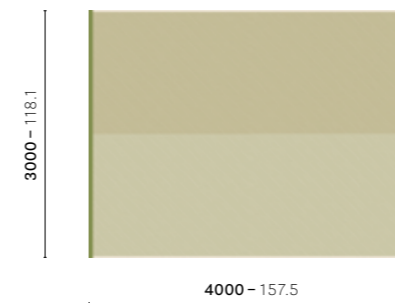
CTWB 300X200

Rug



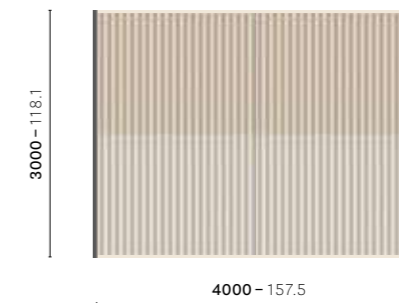
CTWA 400X300

Rug



CTWB 400X300

Rug

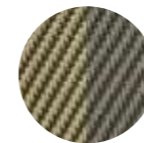


FINISHES / FINITURE



cord profile / intreccio in corda

Diagonal twill pattern finish
Finitura trama twill diagonale

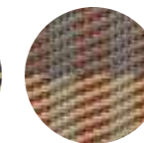


VE

Striped twill pattern finishes
Finiture trama twill a righe



NE



TE

Rail

Under the sun

DESIGN
Pedrali R&D, 2020

EN — Rail is an outdoor sun lounger characterized by simple, modern lines and ideal for relaxing moments on the terrace, in the garden or by the pool. Its slim frame in powder coated aluminium has four angled legs in stainless steel featuring an oblique design.

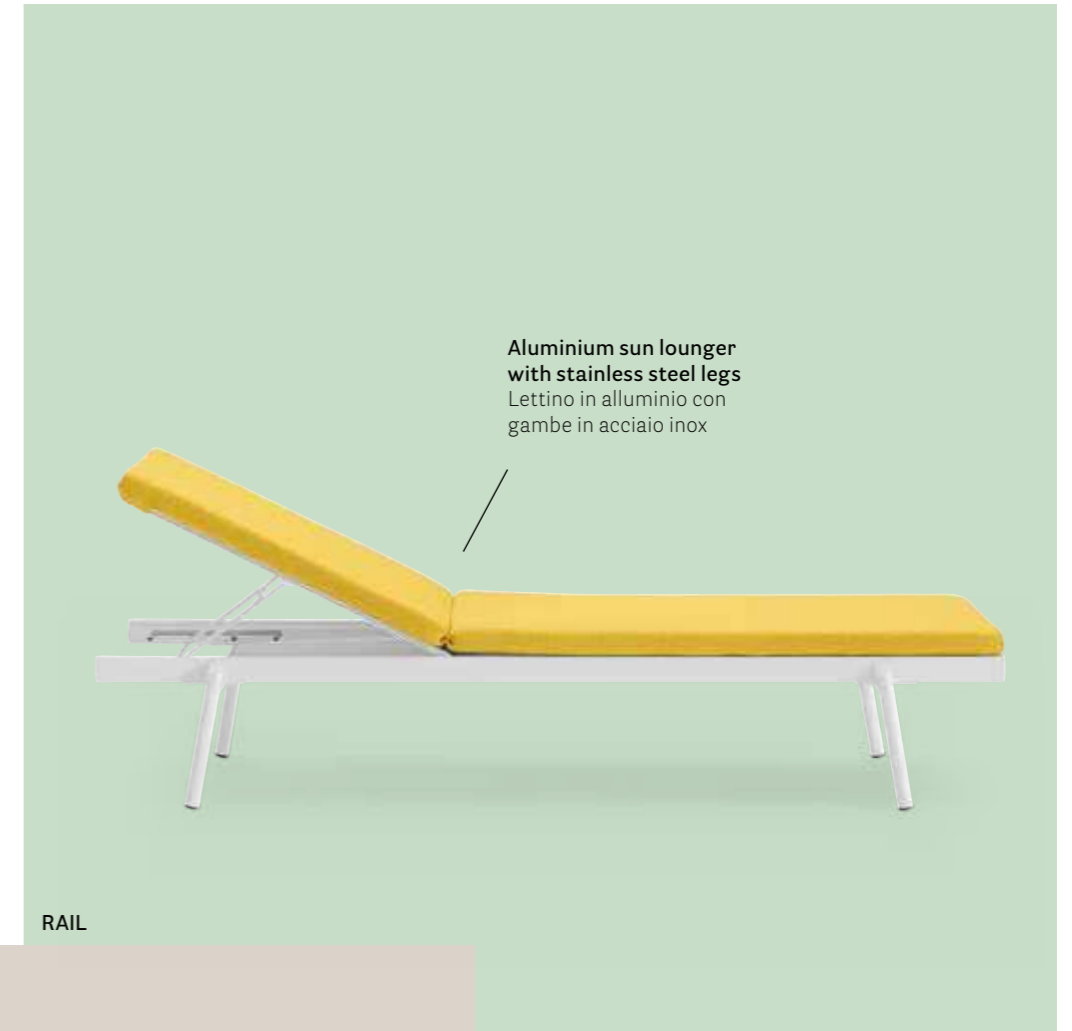
IT — Rail è un lettino per outdoor caratterizzato da linee semplici e moderne, ideale per godersi momenti di relax in terrazza, in giardino o a bordo piscina. Si caratterizza per una struttura dalle linee sottili in alluminio verniciato, caratterizzata da quattro gambe in acciaio inox inclinate dal taglio obliquo.



LEISURE



SUN LOUNGER



Aluminium sun lounger
with stainless steel legs
Letino in alluminio con
gambe in acciaio inox

RAIL



Reclining backrest in four positions
Schienale regolabile in 4 inclinazioni

RAIL/2

SUN LOUNGER

SUN LOUNGER



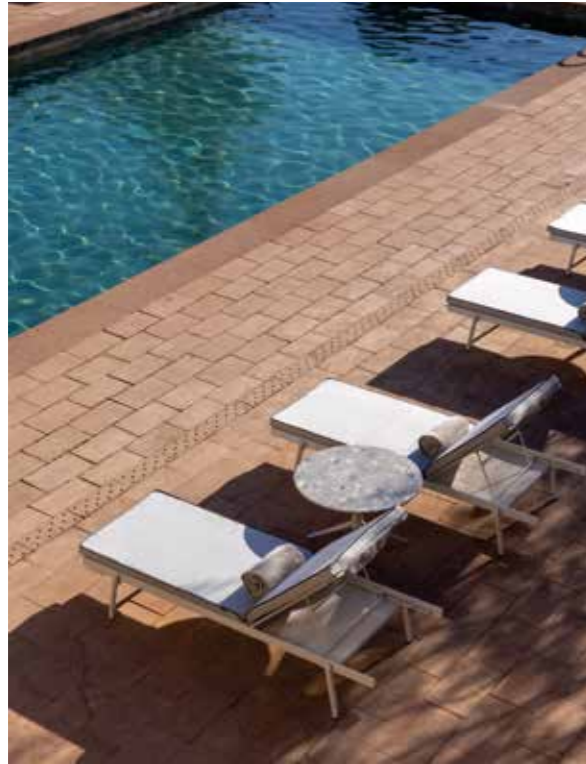
Version with rear castors
Versione con ruote posteriori

Cushion in dry-feel foam upholstered in water-repellent, UV resistant fabric
Cuscino in poliuretano espanso drenante rivestito in tessuto idrorepellente e resistente ai raggi UV

RAIL/2 + RAIL.23 + RAIL.30



Sun lounger roof
Tettuccio parasole



Hotel Le Dune Piscinas

Ingurto, Italy

Project: Hotel
Products: Rail sun lounger,
Elliot coffee table



#pedralitales

Noto, Italy

Project: 2024 adv campaign
Products: Rail sun lounger, Caementum coffee table



Private villa in Sicily

Noto, Italy

Project: Private villa
Products: Rail sun lounger, Reva Cocoon sofa and chaise longue, Circuit coffee table, Twiny rug, Buddy Oasi sofa, Caementum coffee table

SIZES / DIMENSIONI

mm - in

RAIL

Sun lounger, aluminium frame and steel legs
WIDTH: 725 - 28.5
BACKREST GRADES: 0°, 7°, 11°, 25°



RAIL/2

Sun lounger, aluminium frame and steel legs, rear castors
WIDTH: 725 - 28.5
BACKREST GRADES: 0°, 7°, 11°, 25°



RAIL.23

Cushion for sun lounger
WIDTH: 660 - 26.0



RAIL.30

Sun lounger roof
THICKNESS: 25 - 0.98



FINISHES / FINITURE

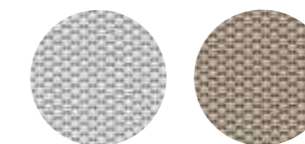


aluminium / alluminio

waterproof textile mesh / rete tessile impermeabile



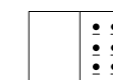
BI100E SA200E



BI SA

fabrics / tessuti

→ see page 374
 guarda pagina 374



CERTIFICATIONS / CERTIFICAZIONI

Safety, strength and durability tests / Prove di sicurezza, resistenza e durata
 EN 1728:2012+AC2013 — EN 581-2:2015

Remind

Between mind & heart

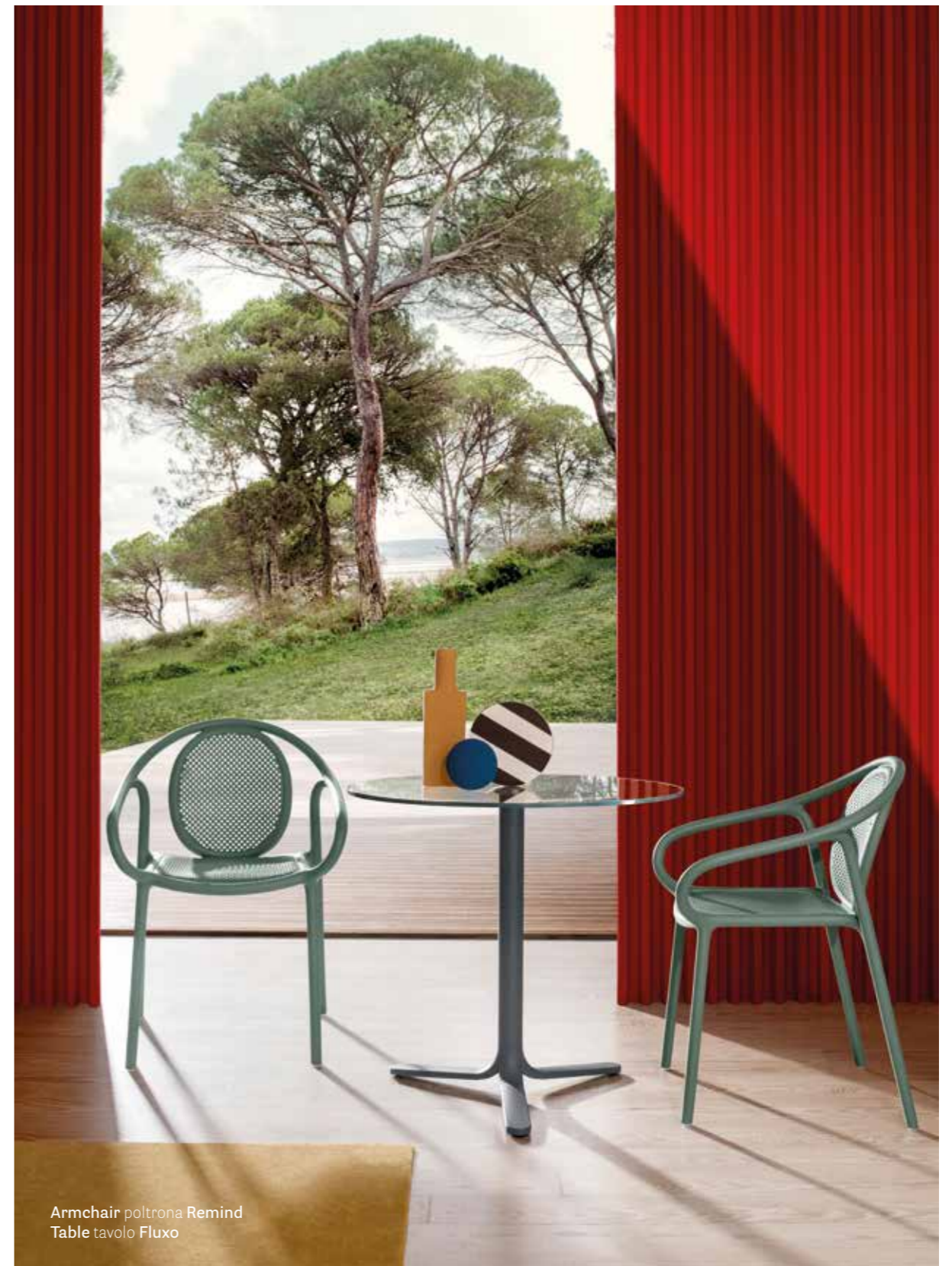
DESIGN
Eugeni Quitllet, 2018

EN — While evoking the soft sinuous curves of wooden chairs from the late nineteenth century, Remind's organic silhouette recalls something never seen before, a universal shape able to fit into any space and style of decor. The result is an innovative polypropylene seating, in which each element is conceived to ensure total comfort and cosiness. Remind recycled grey version is one of the first products made from recycled polypropylene: 50% from post-consumer waste and 50% industrial waste.

IT — Remind riprende la memoria delle curve morbide e sinuose delle sedie in legno della seconda metà del XIX Secolo. La sua essenza si esprime attraverso una silhouette dalle forme organiche capace di "ricordare qualcosa mai visto prima", una forma universale in grado di adattarsi a qualsiasi spazio e stile. Una seduta innovativa in polipropilene in cui ogni elemento è pensato per conferire comfort e avvolgenza. La versione Remind recycled grey rappresenta uno dei primi prodotti realizzati in polipropilene riciclato: 50% da scarto di materiale plastico post consumo e 50% da scarto di materiale plastico industriale.



LIVING



Armchair poltrona Remind
Table tavolo Fluxo

SIDE CHAIR



SIDE CHAIR

Polypropylene charged
with glass fiber
Polipropilene caricato
con fibra di vetro



3730

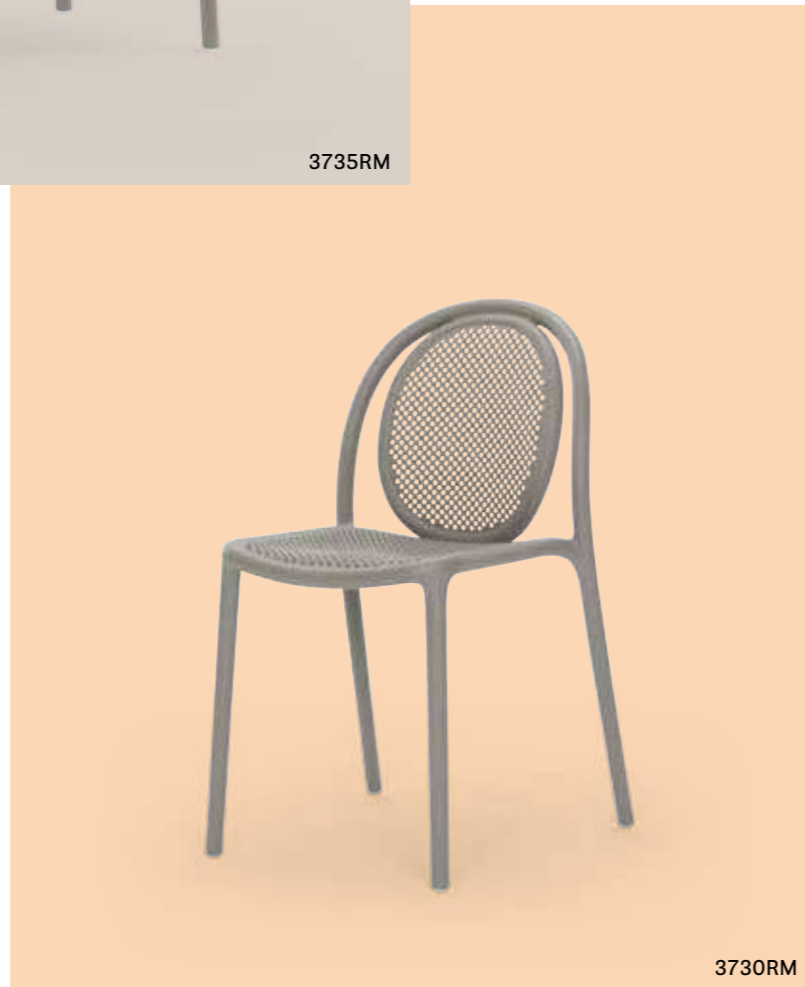


SIDE CHAIR — ARMCHAIR



Remind recycled grey in
recycled polypropylene
Remind recycled grey
in polipropilene riciclato

3735RM



3730RM



Side chair sedia Remind recycled grey

ARMCHAIR

The perforated backrest can be decorated with tiny colourful pixels made from polypropylene
Lo schienale traforato può essere decorato con piccoli pixel colorati realizzati in polipropilene



3735

ARMCHAIR



Stackable
Impilabile



The Coach House

Adelaide, Australia

Project: Hotel

Products: Remind armchair



Petit Palace Suites

Santorini, Greece

Project: Hotel

Architect: Lab11

Products: Remind armchair,
Concrete table





Green Design Landscape Festival

Città Alta, Bergamo - Italy

Project: Temporary installation

Products: Remind armchair,
Elliot coffee table, Happy Apple lighting

SIZES / DIMENSIONI

mm - in

3730
Polypropylene side chair



3730RM
Recycled polypropylene side chair



Remind Pixel
Polypropylene pixel,
1 pack 300 pcs



3735
Polypropylene armchair



3735RM
Recycled polypropylene armchair



FINISHES / FINITURE



polypropylene / polipropilene



CERTIFICATES / CERTIFICAZIONI



Safety, strength and durability tests / Prove di sicurezza, resistenza e durata
EN 1728:2012+AC2013 — EN 16139:2013 level 2 — ANSI-BIFMA X5.1-2017

AWARDS / PREMI



Soul

Pure creativity

DESIGN
Eugeni Quitllet, 2018

EN — The concept of Soul stems from the idea of creating a chair using a blend of age-old methods and cutting-edge techniques. Its ash structure has a minimalistic, flowing silhouette, characterized by a harmonious interplay of curves and lines. The outdoor version made of aluminium, with a seat in teak slats, ensures strength and lightness.

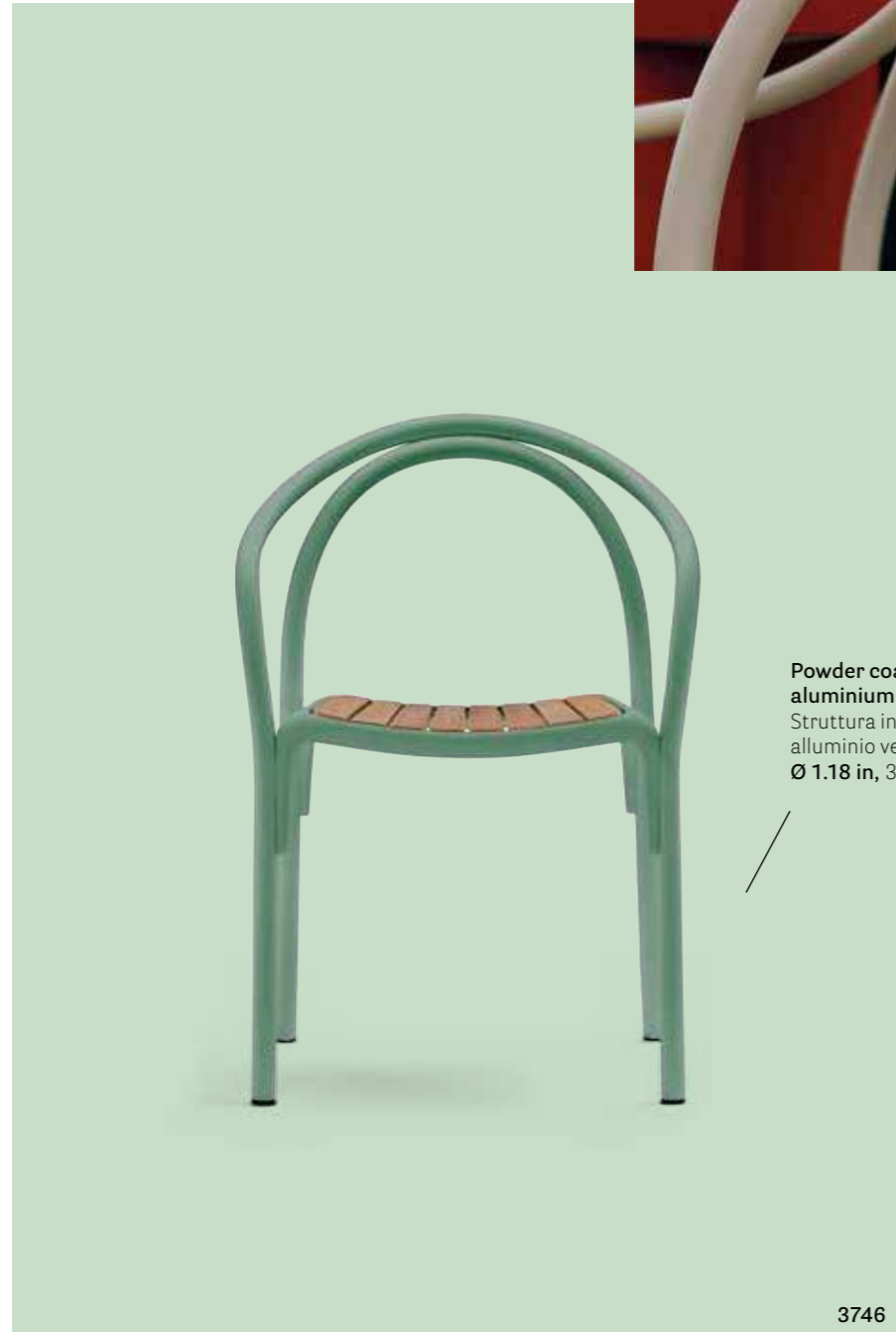
IT — La poltrona Soul nasce dal desiderio di creare una seduta ricorrendo a metodi tradizionali e sfruttando al tempo stesso la tecnologia. Linee sinuose caratterizzano una struttura in frassino resa dinamica e di carattere grazie al gioco armonico di curvature e dolci inclinazioni. La versione outdoor realizzata in alluminio, con sedile con doghe in teak sagomate, garantisce resistenza e leggerezza.



ARMCHAIR



ARMCHAIR



Powder coated aluminium tube frame
Struttura in tubo di alluminio verniciato
Ø 1.18 in, 30 mm

3746

ARMCHAIR



Anodized aluminium
Alluminio anodizzato

Seat in shaped teak slats
Seduta in doghe di teak sagomate



The Tanneries Hotel & Spa

Chania, Greece

Project: Hotel

Products: Soul armchair



3746

Aluminium armchair, teak seat



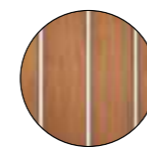
FINISHES / FINITURE



aluminium / alluminio



teak



teak

AWARDS / PREMI



CERTIFICATES / CERTIFICAZIONI

Safety, strength and durability tests / Prove di sicurezza, resistenza e durata
ANSI-BIFMA X5.1-2017



Grand Hotel
Union

Ljubljana, Slovenia

Project: Hotel

Products: Soul armchair,
Nolita table

Souvenir

Elegance and memory

DESIGN
Eugeni Quitllet, 2022

EN — Souvenir was born from the desire to reinterpret the iconic shapes of the chairs used in Parisian gardens in the 18th century. Souvenir echoes their iconic shape, reinterpreting them through a new material. The result is a monoblock made of polypropylene designed specifically for outdoor use. Very light yet resistant, it stands out for its harmonious shape, integrating all its constituent elements in an organic and natural way.

IT — Souvenir nasce dalla volontà di reinterpretare le forme iconiche delle sedie che nel XVIII secolo venivano usate nei giardini parigini. Souvenir ne riprende la forma iconica, reinterpreandola attraverso un nuovo materiale. Il risultato è una seduta monoblocco in polipropilene pensata per l'utilizzo outdoor. Leggera ma resistente, si caratterizza per un'armonia di forme in grado di integrare tutti gli elementi che la compongono in modo organico e naturale.



LIVING

Armchair poltrona Souvenir
Side chair sedia Souvenir
Table tavolo Elliot





Side chair sedia Souvenir
Table tavolo Elliot



"Recycled grey" version
in recycled polypropylene
Versione "recycled grey"
in polipropilene riciclato

555RM

SIDE CHAIR — ARMCHAIR



550



555

ARMCHAIR

The three-dimensional slats make the seat particularly comfortable
Le doghe tridimensionali rendono la seduta molto confortevole





Green Design Landscape Festival

Bergamo, Italy

Project: Temporary installation

Products: Souvenir armchair,
Elliot table, Happy Apple lighting



#PedraliBacktoNature

Salone del Mobile.Milano 2023
Milan, Italy

Project: Exhibition stand

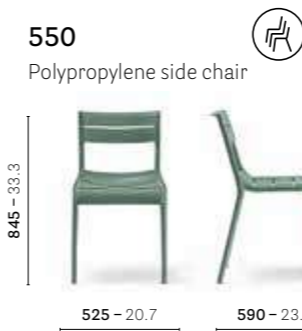
Architect and Styling: DWA Design Studio

Products: Souvenir side chair and armchair,
Elliot table, Hevea pot-holder, Giravolta lighting



SIZES / DIMENSIONI

mm - in



FINISHES / FINITURE



polypropylene / polipropilene



CERTIFICATES / CERTIFICAZIONI

Safety, strength and durability tests / Prove di sicurezza, resistenza e durata
EN 1728:2012+AC2013 — EN 16139:2013 level 2



Philía

Italian twist

DESIGN
Odo Fioravanti, 2024

EN — Philía is a collection of outdoor seatings reminiscent of the traditional Italian garden chairs. A side chair and armchair featured by rational and geometric lines that blend with softer forms typical of the human body. Philía is characterised by a resistant steel tubular frame, while seat and backrest are wrapped in a pvc cord, textured with lines, that, thanks to horizontal direction weaving, intersects at the centre to ensure elasticity and high resistance.

IT — Philía è una collezione di sedute outdoor che riprende le linee delle sedie per esterno della tradizione italiana. Una sedia e una poltrona caratterizzate da linee razionali e geometriche, che si fondono a una gentilezza di forme più morbide tipiche del corpo umano. Philía si distingue per un telaio resistente in tubolare d'acciaio, mentre la seduta e lo schienale sono avvolti da una fettuccia in materiale plastico dalla superficie gofrata che, ordita a mano in orizzontale, crea un incrocio centrale in grado di garantire elasticità e resistenza.



LIVING



Side chair sedia Philía

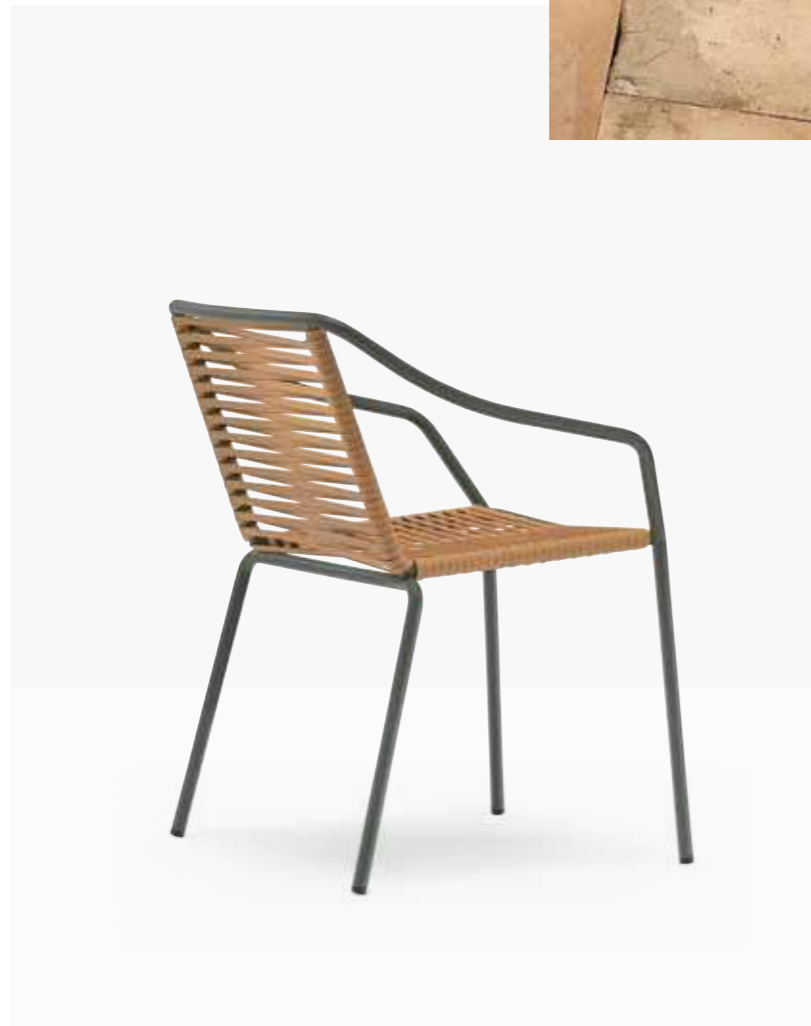
LIVING



ARMCHAIR



ARMCHAIR



SIDE CHAIR



Stackable chair up to 6 units,
stackable armchair up to 8 units
Sedia impilabile fino a 6 pezzi,
poltrona impilabile fino a 8 pezzi

3900



Green Design landscape festival

Città Alta, Bergamo, Italy

Project: Temporary installation

Products: Philia side chair and armchair, Elliot table





#Pedralitales

Noto, Italy

Project: 2024 ADV campaign

Products: Philía side chair and armchair, Ikon table

SIZES / DIMENSIONI

mm - in

3900

Side chair, steel tube frame,
PVC flexible profile seat and backrest



3905

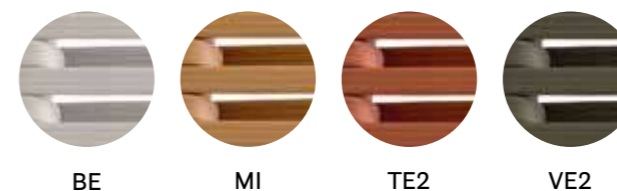
Armchair, steel tube frame,
PVC flexible profile seat and backrest



FINISHES / FINITURE



flexible woven PVC profile / intreccio in pvc flessibile



steel / acciaio



AWARDS / PREMI



BIG SEE
Product Design
Award 2024
Winner

Narì

A family tradition

DESIGN
Andrea Pedrali, 2023

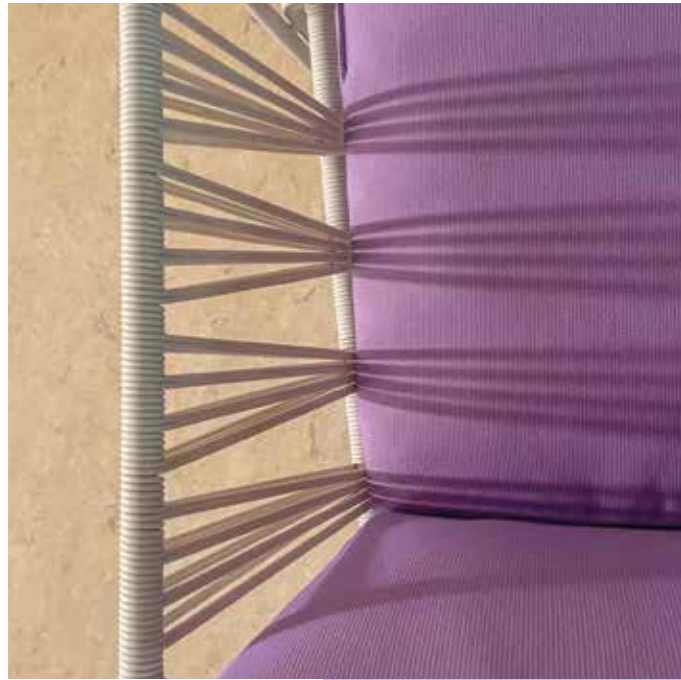
EN — Narì echoes some of the elements of the first forged iron garden chairs from Pedrali's 1960s collection in a contemporary key. The distinctive feature of the legs is evoked using a double steel tube that features a simpler, more linear shape. This woven element tightens towards the lower part of the seat and widens towards the top, calling to mind the fanshaped geometry inspired by the backrest of the Serenella armchair. A tribute of the designer to his grandfather Mario Pedrali, founder of the company.

IT — Narì riprende alcuni degli elementi delle prime sedie da giardino realizzate in ferro battuto presenti nella collezione Pedrali degli anni Sessanta reinterpretandoli in chiave contemporanea. L'elemento distintivo delle gambe viene rievocato ora attraverso l'utilizzo di un doppio tubo d'acciaio dalla forma più lineare e semplice. L'incordatura si stringe nella parte inferiore della seduta e si allarga verso l'alto per richiamare la geometria a ventaglio ispirata allo schienale della poltrona Serenella. Un tributo del designer al nonno Mario Pedrali, fondatore dell'azienda.





ARMCHAIR



LIVING



ARMCHAIR



Private villa in Sicily

Noto, Italy

Project: Private villa

Products: Nari armchair,
Anemos table, Giravolta lighting

#PedraliBacktoNature

Salone del Mobile.Milano 2023
Milan, Italy

Project: Exhibition stand

Architect and Styling: DWA Design Studio

Products: Nari armchair, Concrete table, Giravolta lighting



Green Design Landscape Festival

Città Alta, Bergamo, Italy

Project: Temporary installation

Products: Nari armchair, Ypsilon table,
Nolita sofa, Nolita Relax lounge armchair,
Giravolta lighting, Hevea pot-holder,
Caementum coffee table



Edit Napoli

Napoli, Italy

Project: Exhibition stand

Products: Nari armchair, Elliot table, Arki-Table, Nolita side chair, Giravolta lighting



SIZES / DIMENSIONI

6360

Armchair with steel frame; seat and back cushion in polyurethane foam



FINISHES / FINITURE



steel / acciaio

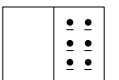


flexible woven PVC profile in the same colour of the frame
intreccio in PVC flessibile in tinta con il telaio



fabrics / tessuti

→ see page 374
guarda pagina 374



CERTIFICATES / CERTIFICAZIONI

Safety, strength and durability tests / Prove di sicurezza, resistenza e durata
EN 1728:2012+AC2013 — EN 581-1:2017 — EN 581-2:2015+AC2016

AWARDS / PREMI



Tribeca

Fasten your seat, belt!

DESIGN
CMP Design, 2018

EN — Tribeca takes us back in time with a modern reinterpretation of classic Sixties patio chairs made from steel and woven cord. A true icon, revisited with new materials: a solid tubular frame, combined with the elasticity of a profile in vertically-woven plastic material.

IT — Tribeca nasce dagli echi confortanti della memoria, una reinterpretazione in chiave moderna delle classiche sedute da terrazza anni Sessanta realizzate in acciaio con intreccio. Un'icona rivisitata attraverso nuovi materiali: un solido telaio tubolare unito all'elasticità di un profilo in materiale plastico ordito verticalmente.



LIVING

Armchair poltrona Tribeca



SIDE CHAIR - ARMCHAIR



SIDE CHAIR



ARMCHAIR



Steel for outdoor use
Acciaio resistente per esterno

3665

ARMCHAIR



The PVC profile is durable, colourful and easy to clean
Il profilo in PVC è durevole, colorato e facile da pulire

LOUNGE ARMCHAIR



Seat height
Altezza seduta
16.5 in, 420 mm

3669

LIVING



Lounge armchair poltrona lounge Tribeca
Coffee table tavolino Nolita

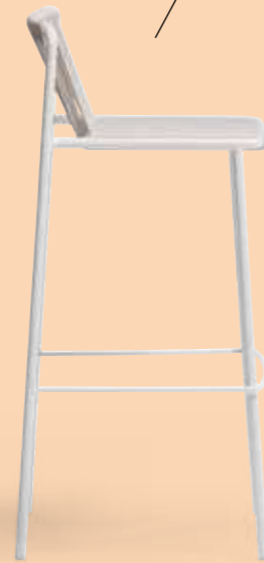
BARSTOOL



Seat height
Altezza seduta
26.6 in, 675 mm



Seat height
Altezza seduta
30.5 in, 775 mm



3667 + 3668

SOFA



Seat height
Altezza seduta
16.9 in, 430 mm

Outdoor version
with steel top
Versione per esterno
con ripiano in lamiera

3666 + CRTD_59X25X30



Rivage Paris

Paris, France

Project: Coffee bar

Products: Tribeca barstool, lounge armchair and sofa, Elliot poseur table, Circuit coffee table



Private House

Botticino, Italy

Project: Private House

Architect: LART Architetti

Products: Tribeca lounge armchair

Papyrella Holiday Retreat

Mykonos, Greece

Project: Hotel

Architect: Architecture Research Practice

Interior design: Ioli Chiotini

Products: Tribeca side chair



Enigma Suites

Santorini, Greece

Project: Hotel

Products: Tribeca armchair and lounge armchair, Fluxo table



Collini Villas

Mykonos, Greece

Project: Restaurant

Architect: AirTec - Sofia Apergi

Products: Tribeca armchair
and side chair, Inox table



Three Olives Tree

Anavyssos, Greece

Project: Hotel

Architect: Constantinos Zarbis

Interior design: Ioli Chiotini

Products: Tribeca lounge armchair
and barstool, Nolita coffee table



Il Sole 24 Ore

Milan, Italy

Project: Office

Architect: Park Associati

Interior design: DEGW

Products: Tribeca side chair, armchair, lounge armchair and sofa, Elliot table and coffee table



Green Design Landscape Festival

Città Alta, Bergamo, Italy

Project:

Temporary installation

Products: Tribeca side chair and armchair, Nolita table, Giravolta lighting



3660
Side chair, steel frame, PVC flexible profile seat and backrest



3665
Armchair, steel frame, PVC flexible profile seat and backrest



3667
Barstool, steel frame, PVC flexible profile seat and backrest



3668
Barstool, steel frame, PVC flexible profile seat and backrest



3669
Lounge armchair, steel frame, PVC flexible profile seat and backrest



3666
Sofa, steel frame, PVC flexible profile seat and backrest



steel / acciaio



flexible woven PVC profile in the same colour of the frame
intreccio in PVC flessibile in tinta con il telaio

for BI200 colour frame, PVC profile is beige
per il colore del telaio BI200, l'intreccio in PVC è beige

AWARDS / PREMI

CERTIFICATES / CERTIFICAZIONI



Safety, strength and durability tests / Prove di sicurezza, resistenza e durata
EN 1728:2012+AC2013 — EN 16139:2013 level 2

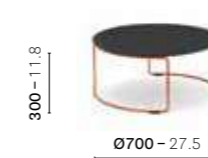
CRTD_42X45

Coffee table, steel rod frame, solid laminate top



CRTD_70X30

Coffee table, steel rod frame, solid laminate or steel top



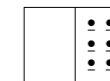
CRTD_59X25

Coffee table, steel rod frame, solid laminate or steel top



powder coated / verniciato

→ see page 372
guarda pagina 372



Nolita

Vintage chic

DESIGN
CMP Design, 2015

EN — Nolita is a family of outdoor seatings which recalls the origins of a historic course, started by Mario Pedrali in 1963 with his first metal garden chairs. The collection seems to arise from the memories of a sunny and lively square, a timeless place, giving birth to simple and iconic shapes.

IT — Nolita è una famiglia di sedute da esterni che rievoca le origini di un percorso storico, iniziato da Mario Pedrali nel 1963 con le sue prime sedie da giardino in metallo. La collezione sembra scaturire da ricordi in trasparenza, un'atmosfera senza tempo da piazza assolata e vivace, per un risultato di solida durevolezza in forme semplici ed iconiche.





Table tavolo Nolita
Side chair sedia Nolita
Armchair poltrona Nolita

SIDE CHAIR - ARMCHAIR



SIDE CHAIR



LOUNGE ARMCHAIR



Seat height
Altezza seduta
15.7 in, 400 mm

3659 + 3659.3

SIDE CHAIR — BARSTOOL



Seat height
Altezza seduta
29.5 in, 750 mm

3658

3651 + 3650.3

3658 + 3657.3

CHAISE LONGUE



LEISURE



Il Gattopardo di Lampedusa

Lampedusa, Italy

Project: Hotel

Architect: Moretti More

Products: Nolita chaise longue and coffee table



Villa Monte Mario

Cinigiano, Italy

Project: Hotel

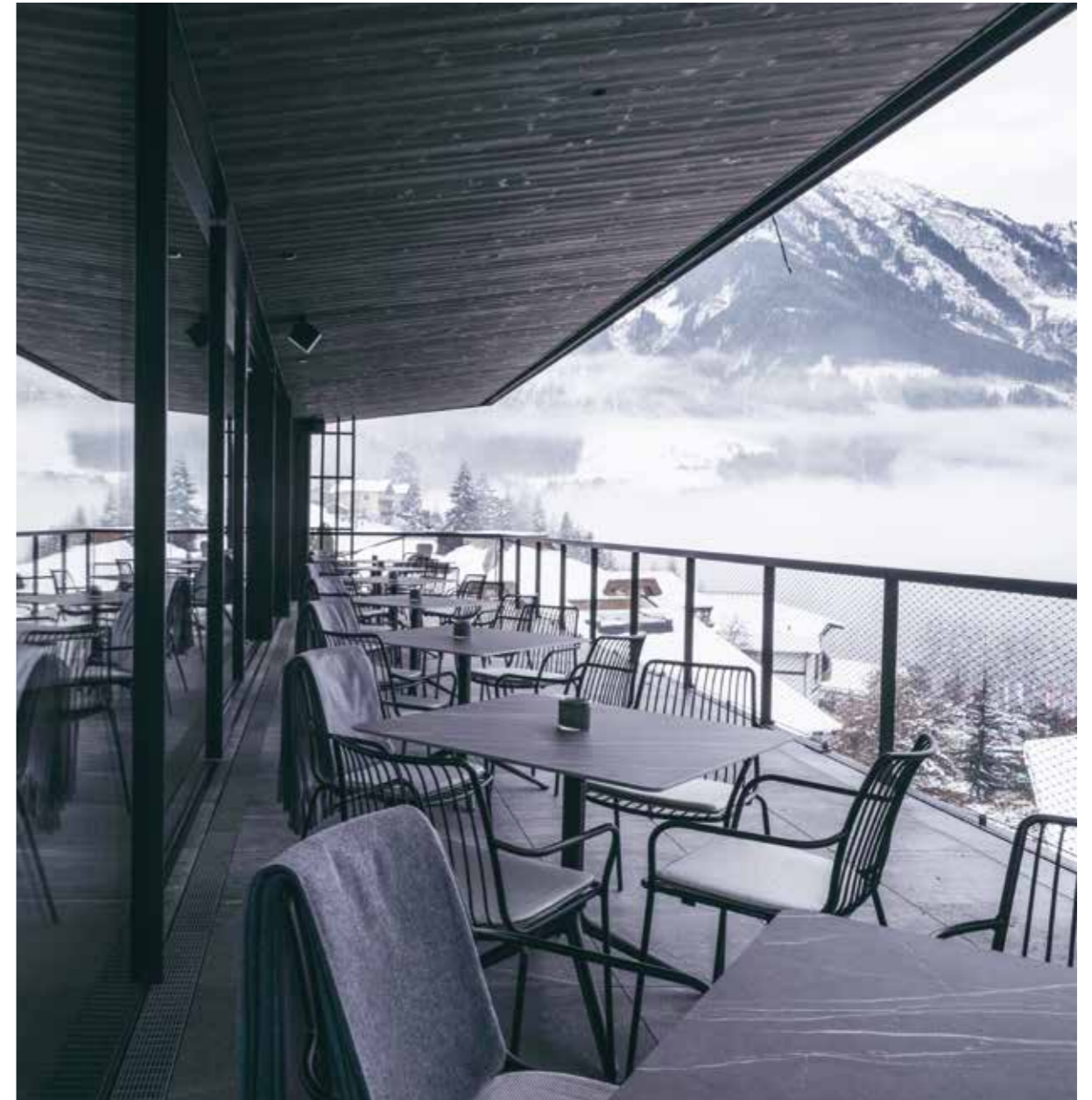
Products: Nolita chaise longue, Circuit coffee table, Panarea lounge armchair

Bassa Maina Villas & Suites

Areopoli, Greece

Project: Hotel

Products: Nolita armchair and table



Haven Mountain Retreat

Sankt Johann im Pongau, Austria

Project: Hotel

Products: Nolita armchair, Elliot table

Curaçao Marriott Beach Resort

Willemstad, Curaçao

Project: Hotel

Products: Nolita armchair



Les Ombres at le Musée du quai Branly Jacques Chirac

Paris, France

Project: Restaurant

Products: Nolita armchair,
Ypsilon table



Altera Pars Suites

Santorini, Greece

Project: Hotel

Products: Nolita armchair,
chaise longue, table and coffee table

Natu Restaurant

Athens, Greece

Project: Restaurant

Interior design: Stones and Walls

Products: Nolita lounge armchair,
Ikon coffee table



3650
Steel side chair



3651
Steel side chair, high backrest



3655
Steel armchair



3656
Steel armchair, high backrest



3657
Steel barstool



3658
Steel barstool



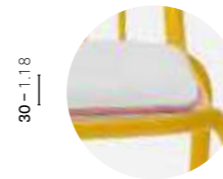
3659
Steel lounge armchair



3654
Steel chaise longue
WIDTH: 700 - 27.6



3650.3
Cushion for side chair and armchair
WIDTH: 400 - 15.7



3659.3
Cushion for lounge armchair
WIDTH: 440 - 17.3



3657.3
Cushion for barstool
WIDTH: 325 - 12.8

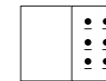


3654.7
Cushion for chaise longue
WIDTH: 575 - 22.6



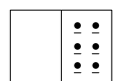
powder coated / verniciato

→ see page 372
guarda pagina 372



fabrics and rim / tessuti e bordino

→ see page 374
guarda pagina 374



Safety, strength and durability tests / Prove di sicurezza, resistenza e durata
EN 1728:2012+AC2013 — EN 16139:2013 level 2



Nolita Sofa

Vintage chic

DESIGN
CMP Design, 2022

EN — Nolita Sofa is an outdoor sofa featuring simple and iconic shapes and a steel tube structure that provide visual rhythm and gentle proportions and ensure strength and durability. By recalling the origins of a historic course started by Mario Pedrali in 1963 with his first metal garden chairs, the Nolita Sofa keeps the collection's distinctive features of transparency and lightness, whose comfort is enhanced by soft cushions.

IT — Nolita Sofa è un divano outdoor caratterizzato da forme semplici e iconiche, dove la struttura in tubo d'acciaio dona ritmo visivo e proporzioni gentili, garantendo solidità e durevolezza. Rievocando le origini di un percorso storico iniziato da Mario Pedrali nel 1963 con le sue prime sedie da giardino in metallo, il divano Nolita conserva i tratti di trasparenza e leggerezza propri della collezione, il cui comfort viene esaltato dai morbidi cuscini.





Steel tube frame powder
coated for outdoor use
Struttura in tubo d'acciaio
verniciato per esterno
Ø 0.78 in, 20 mm



DN002

SOFA

SOFA

Sofa with steel tube frame and cushions
in polyester covered in outdoor fabric
or polypropylene fabric
Divano con struttura in tubo d'acciaio
e cuscini in poliester rivestiti in tessuto
in polipropilene o tessuto per outdoor



CRTD_59X25 + CRTD_42X45

DN002 + DN001

SOFA



DN001



LIVING



Sofa divano Nolita Sofa

SOFA



30° angular connecting top
Ripiano di collegamento angolare 30°

SOFA

Outdoor cushions in polyester, covered by a waterproof lining and outdoor fabric
Cuscini per esterno in poliestere rivestiti con fodera impermeabile e tessuto per outdoor



3001 + 3002 + 3004

Nolita Sofa provides the possibility of combining different modules, linear or angular with right or left armrest, which can be connected with an HPL top
Il divano Nolita Sofa offre la possibilità di abbinare tra loro diversi moduli, lineari o angolari con bracciolo destro o sinistro, che possono essere collegati con un ripiano in HPL



DN002 + DN001 + DN003 + DN010 + DN020

Nolita relax

Vintage chic

DESIGN
CMP Design, 2024

EN — Nolita Relax is an outdoor lounge chair designed as natural evolution of the Sofa. Generous sizes for an armchair that distinguishes itself maintaining the lines and design of the collection, it evokes the origins of the brand begun by Mario Pedrali way back to 1963 with his first metal garden chairs. Nolita Relax shows its summertime appeal by simple and iconic shapes. The steel tube frame gives visual rhythm and gentle proportions, ensuring maximum strength and durability. A single line from the ground, defines both armrests and backrest. The armchair incorporates the collection's spirit of transparency and lightness, the comfort is given by soft cushions with waterproof lining and removable outdoor fabric cover. Designed to enjoy relaxing moments in open air, Nolita Relax suits home living furnishing, as well as, lounge areas in contract spaces.

IT — Nolita Relax è una seduta per outdoor che nasce come naturale ampliamento del Nolita Sofa. Una poltrona dalle dimensioni generose che, mantenendo le linee dell'intera collezione, rievoca le origini di un percorso storico iniziato da Mario Pedrali nel 1963 con le sue prime sedie da giardino in metallo. Nolita Relax conferma il suo carattere estivo e solare, caratterizzata da forme semplici e iconiche. La struttura in tubo d'acciaio dona ritmo visivo e proporzioni gentili, garantendo il massimo della solidità e della durezza. Un unico elemento perimetrale, partendo da terra, definisce sia braccioli che schienale. La poltrona conserva i tratti di trasparenza e leggerezza propri della collezione, il cui comfort viene esaltato dai morbidi cuscini protetti da una fodera impermeabile e rivestiti con tessuti sfoderabili per esterno. Pensata per vivere momenti di convivialità e relax all'aria aperta, Nolita Relax è adatta per il living di casa ma anche per aree lounge in ambito contract.

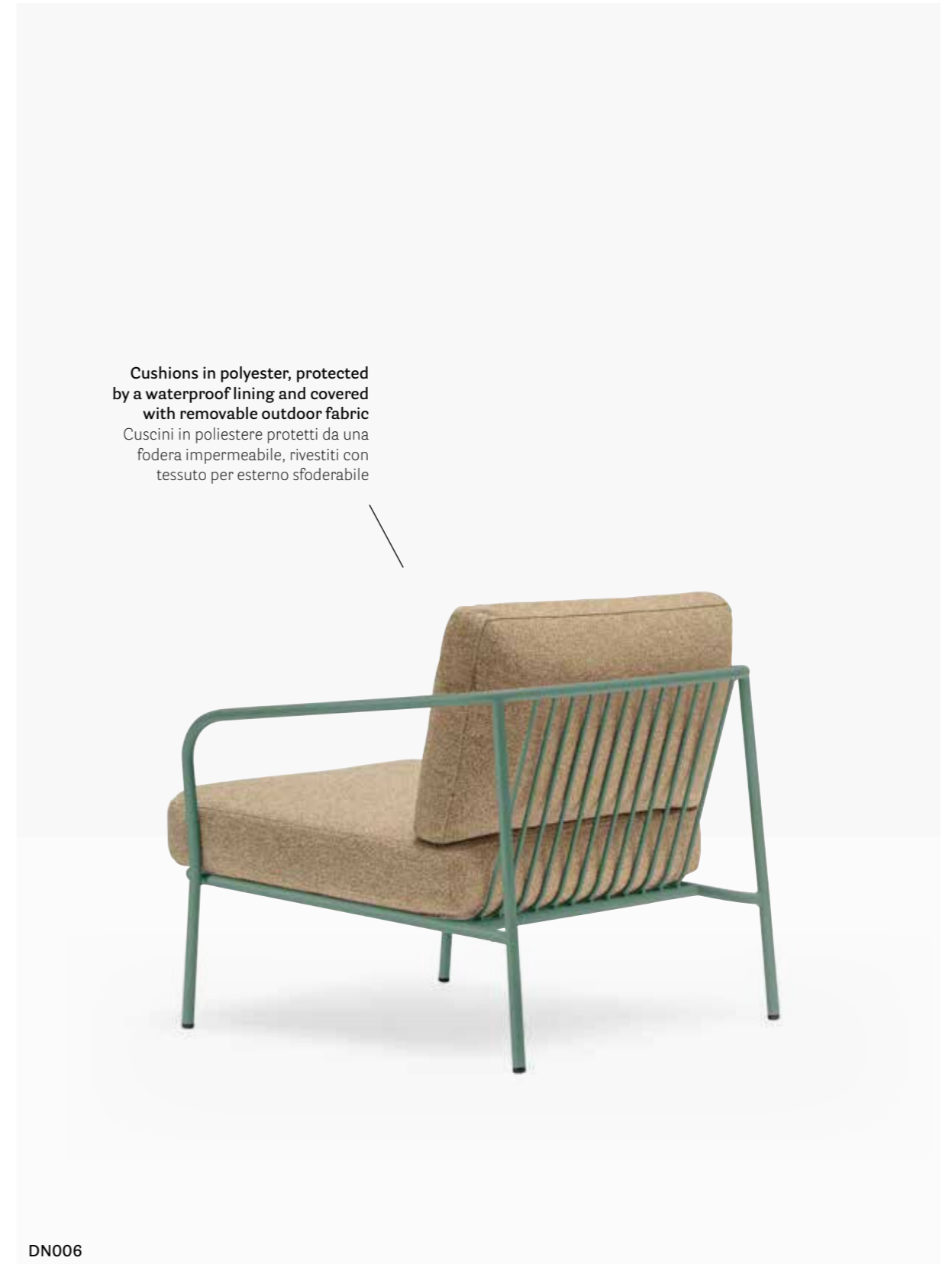




Lounge armchair poltrona lounge Nolita Relax
Sofa divano Nolita Sofa
Coffee table tavolino Circuit



Lounge armchair poltrona lounge **Nolita Relax**
Coffee table tavolino **Caementum**



Cushions in polyester, protected
by a waterproof lining and covered
with removable outdoor fabric
Cuscini in poliester protetti da una
fodera impermeabile, rivestiti con
tessuto per esterno sfoderabile

DN006

LOUNGE ARMCHAIR



A single Ø 20 mm steel tube line defines both armrests and backrest
Un unico elemento perimetrale in tubo d'acciaio Ø 20 mm definisce braccioli e schienale



Private villa in Sicily

Noto, Italy

Project: Private villa

Products: Nolita Relax lounge armchair, Caementum coffee table, Giravolta lighting



#PedraliColoursofLightnes

Salone Del Mobile.Milano 2024
Milan, Italy

Project: Exhibition stand
Architect and styling: DWA Design Studio
Products: Nolita Relax lounge armchair, Nolita Sofa, Caementum coffee table, Twiny rug



#PedraliNewHorizons

Salone del Mobile.Milano 2022
Milan, Italy

Project: Exhibition stand
Architect: CalviBrambilla
Styling: Studio Salaris
Products: Nolita Sofa and chaise longue, Circuit coffee table



DN002 (with armrest cushion) / DN004 (without armrest cushion)

Sofa in steel tube frame, element with right armrest



DN003 (with armrest cushion) / DN005 (without armrest cushion)

Sofa in steel tube frame, element with left armrest



DN001

Sofa in steel tube frame, linear element



DN006

Lounge armchair in steel tube frame



DN010

Rectangular connecting top

THICKNESS: 30 - 1.2



DN020

Angular connecting top

THICKNESS: 30 - 1.2



Protective covers available

Disponibili coperture protettive

Pillowcases for lateral, seat and backrest cushions available

Disponibili federe cuscini laterali, sedile e schienale

We suggest to remove the cushions over night and in rainy days

Si consiglia di ritirare i cuscini durante la notte e in caso di pioggia

3001

Cushion

DEPTH: 200 - 7.9



3002

Cushion

DEPTH: 200 - 7.9



3004

Cushion

DEPTH: 170 - 6.7



3005

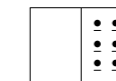
Cushion

DEPTH: 170 - 6.7



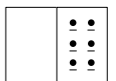
fabrics / tessuti

→ see page 374
guarda pagina 374

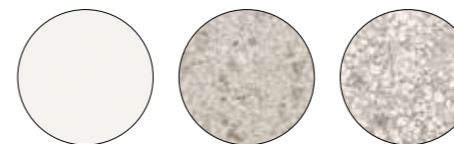


powder coated / verniciato

→ see page 372
guarda pagina 372



solid laminate top / ripiano in stratificato



CFP_BI

3471

3467

Intrigo

A beautiful twist

DESIGN
Claudio Dondoli - Marco Pocci, 2015

EN — A combination of lines which twist harmoniously creating an involving, minimal silhouette. The main feature is represented by the die-cast aluminium which creates different sections for the backrest, armrests and legs.

IT — Un insieme di linee che si intersecano armonicamente dando origine ad una silhouette avvolgente e minimale. Intrigo è una seduta in cui la pressofusione di alluminio crea sezioni differenti per schienale, braccioli e gambe.



LIVING

Armchair poltrona Intrigo



ARMCHAIR



Extruded aluminium legs
Gambe in estruso di alluminio

Die-cast aluminium
seat and armrests
Seduta e braccioli in
pressofusione di alluminio



3715

ARMCHAIR



ARMCHAIR



**Waterproof seat
and back cushions**
Cuscino per sedile e schienale
in tessuto waterproof

3715 + 3715.20

HOSPITALITY



Table tavolo Concrete
Steel top ripiano in lamiera
Armchair poltrona Intrigo



Atoles Retreat

Imerovigli, Greece

Project: Hotel

Interior designer:

Stones and walls

Products: Intrigo armchair,
Bold table

Oro Bistrot at NH Collection Fori Imperiali

Rome, Italy

Project: Restaurant

Products: Intrigo armchair,
Ypsilon table





Villa Monte Mario

Cinigiano, Italy

Project: Hotel
 Products: Intrigo armchair,
 Toa table



SIZES / DIMENSIONI

mm - in

3715

Aluminium armchair



3715.5

Upholstered seat cushion only
 WIDTH: 500 - 19.7



3715.20

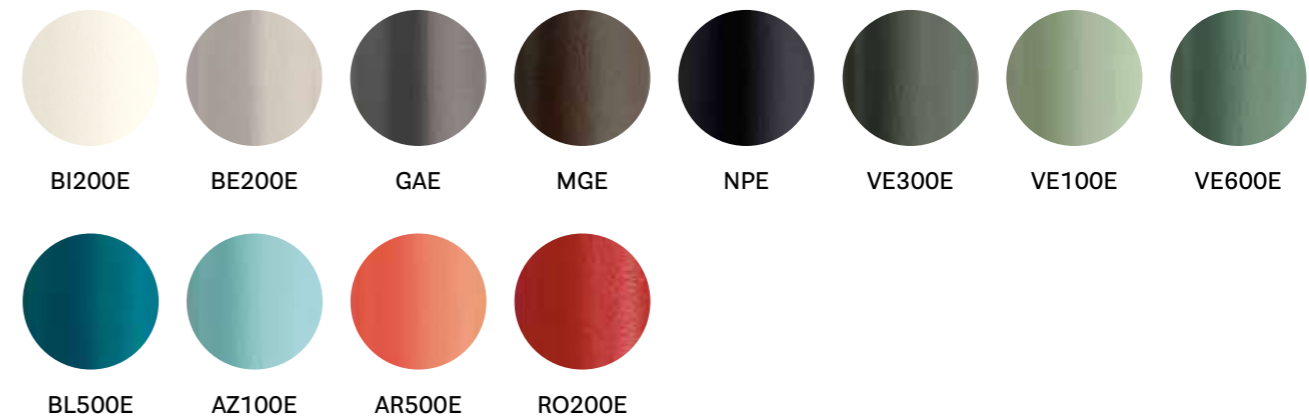
Upholstered seat and back cushions only



FINISHES / FINITURE

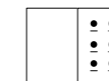


aluminium / alluminio



fabrics / tessuti

→ see page 374
 guarda pagina 374



CERTIFICATES / CERTIFICAZIONI

Safety, strength and durability tests / Prove di sicurezza, resistenza e durata
 EN 1728:2012+AC2013 — EN 16139:2013 level 2



Dome

Multimaterial language

DESIGN
Odo Fioravanti, 2016

EN – Dome is a collection of seating that brings back to mind the glorious tradition of the bistro chairs with curved silhouettes and generous shapes. It recalls the domes of the monuments adorning a lot of cities all around the world.

IT – Dome è una collezione di sedute che evoca la gloriosa tradizione delle sedie da bistrot, caratterizzate da silhouette arcuate e forme generose, richiamando le cupole dei monumenti che impreziosiscono molte città nel mondo.



HOSPITALITY





ARMCHAIR

Perforated seat
and back version
Versione con seduta
e schienale traforati



266

SIDE CHAIR



261

ARMCHAIR



ARMCHAIR



BARSTOOL



262 + 263



**Virginia's
Cave Villas**

Santorini, Greece

Project: Hotel

Products: Dome armchair,
Concrete table

Pedrali SpA

Bergamo, Italy

Project: Company
Canteen

Products: Dome side
chair, Fabbrico table



Private Home

Vinišće, Croatia

Project: Private Home

Architects: Koras d.o.o.

Products: Dome side chair,
Toa table



260

Polypropylene side chair



261

Polypropylene side chair with perforated seat and back



260/CL1

Polypropylene side chair, fire-retardant grade



265

Polypropylene armchair



266

Polypropylene armchair with perforated seat and back



265/CL1

Polypropylene armchair, fire-retardant grade



267

Polypropylene barstool



268

Polypropylene barstool



262

Polypropylene barstool

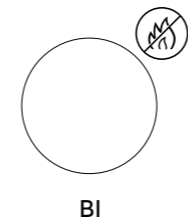
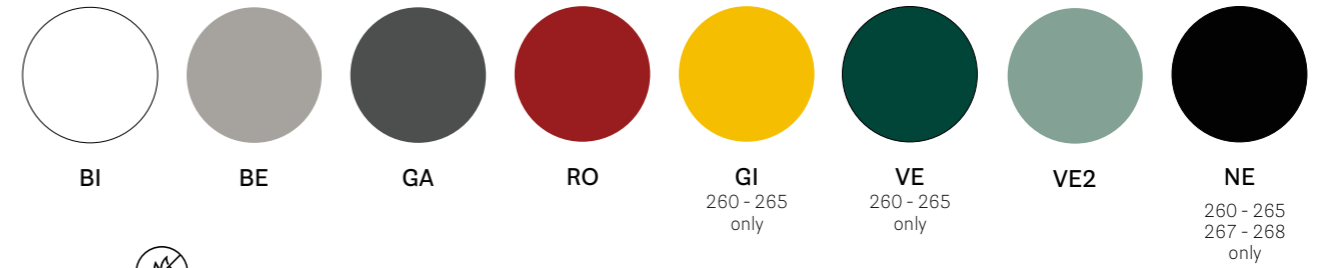


263

Polypropylene barstool



polypropylene / polipropilene



BI

BE

GA

RO

GI

260 - 265 only

VE

260 - 265 only

VE2

NE

260 - 265
267 - 268 only

BI

AWARDS / PREMI



CERTIFICATES / CERTIFICAZIONI

Safety, strength and durability tests / Prove di sicurezza, resistenza e durata
EN 1728:2012+AC2013 — EN 16139:2013 level 2



Babila

Reloaded memory

DESIGN
Odo Fioravanti, 2013

EN — Babila collection is able to move along tradition and innovation with great agility. A family of seatings and tables whose strength is its simplicity and directness, to recall a timeless shape.

IT — La collezione Babila si muove con grande agilità tra tradizione e innovazione. Una famiglia di sedute e tavoli la cui forza è nella semplicità e immediatezza, a ricordare una forma senza tempo.



ARMCHAIR



2735

ARMCHAIR



ARMCHAIR

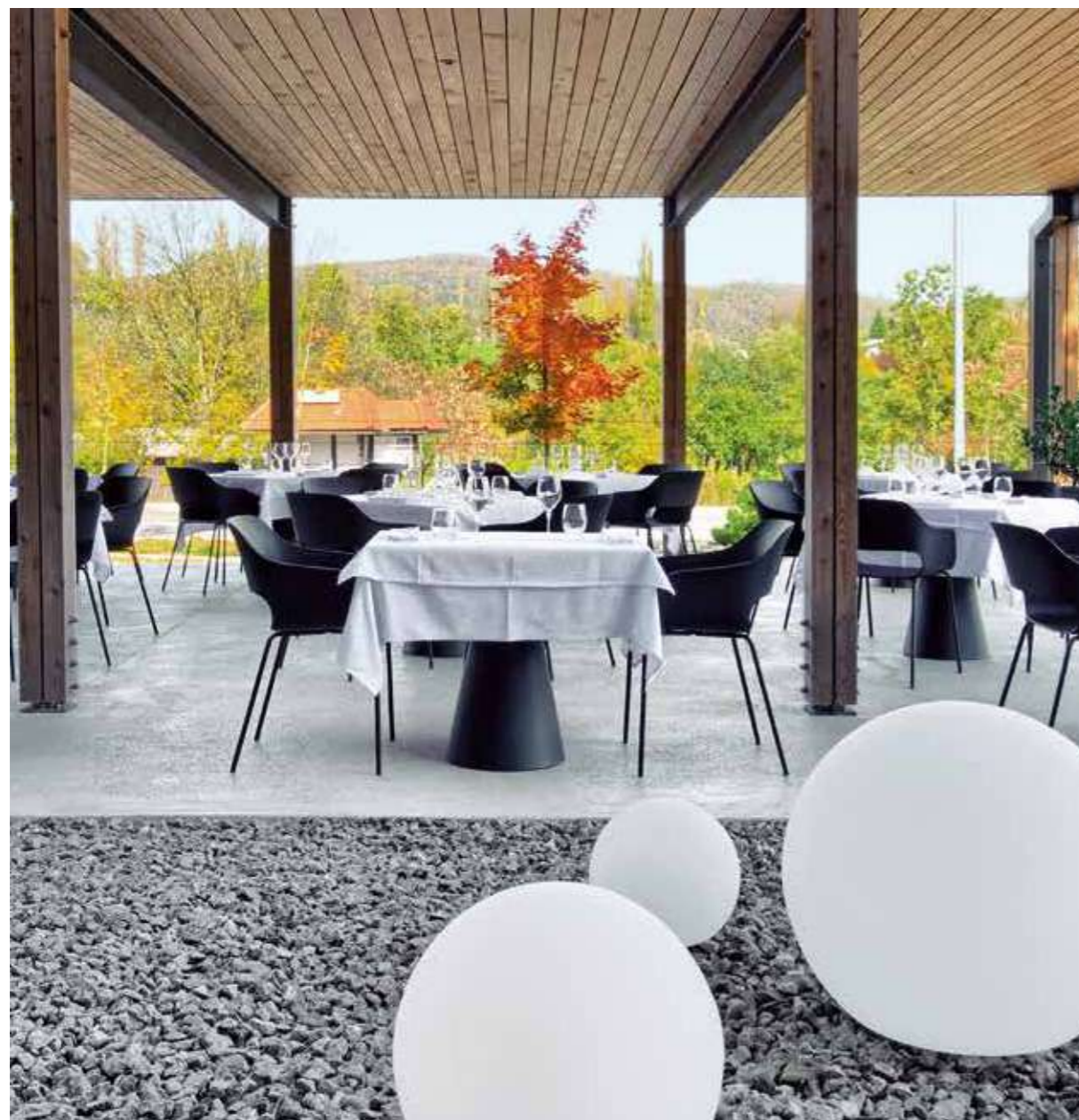


Armchair poltrona Babila XL



50% from post-consumer waste
and 50% industrial waste
50% da scarto di materiale plastico
post consumo e 50% da scarto di
materiale plastico industriale





Gostilna Štravs

Šmarje pri Jelšah, Slovenia

Project: Restaurant

Architect: Arhitektura AB objekt

Products: Babila armchair, Ikon table,
Happy Apple lighting

SIZES / DIMENSIONI

mm - in

2730

Side chair, technopolymer shell, steel tube frame



2735

Armchair, polypropylene shell, steel tube frame



2734

Armchair, polypropylene shell, steel tube frame



2734RM

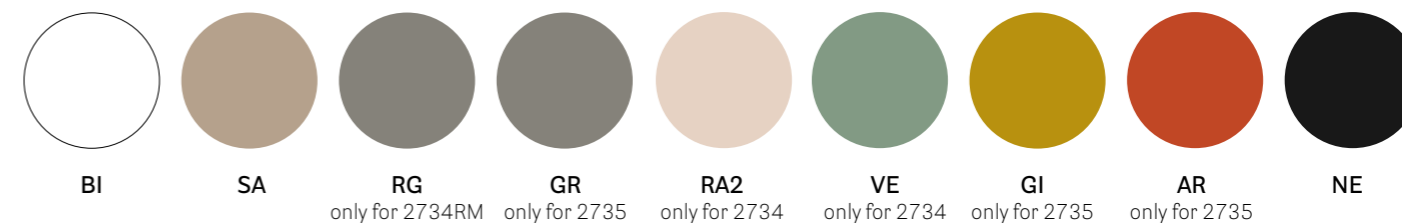
Armchair, recycled polypropylene shell, steel tube frame



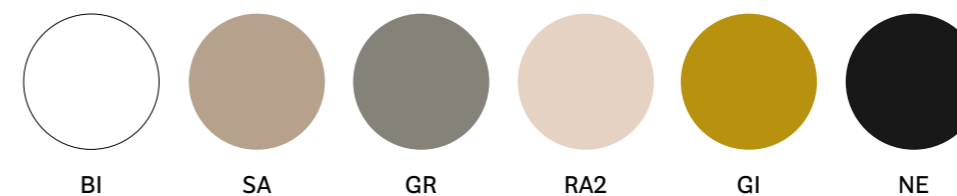
FINISHES / FINITURE



polypropylene / polipropilene (Babila armchair and Babila XL)



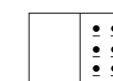
technopolymer / tecnopolimero (Babila side chair)



For 2735

powder coated / verniciato

→ see page 372
guarda pagina 372



CERTIFICATES / CERTIFICAZIONI

Safety, strength and durability tests / Prove di sicurezza, resistenza e durata
EN 1728:2012+AC2013 — EN 16139:2013 level 2

Babila Twist

Reloaded memory

DESIGN
Odo Fioravanti, 2022

EN — Babila Twist is a steel armchair characterised by a large and welcoming shell woven with a flat rope in polypropylene. Babila Twist's distinguishing feature is the combination of a woven body and a tubular steel frame with slats for the seat. These are screwed, making them easy to disassemble. A comfortable cushion is covered in fabric for outdoor use.

IT — Babila Twist è una poltroncina in acciaio caratterizzata da una seduta ampia e accogliente, ricoperta da un intreccio realizzato con una corda piatta di polipropilene. Il tratto distintivo di Babila Twist è la combinazione tra una scocca intrecciata e il telaio in tubo d'acciaio provvisto di doghe per la seduta, uniti attraverso viti che consentono un agile disassemblaggio. Sulla seduta di Babila Twist appoggia un confortevole cuscino rivestito con un tessuto per esterno.



LIVING



Armchair poltrona Babila Twist

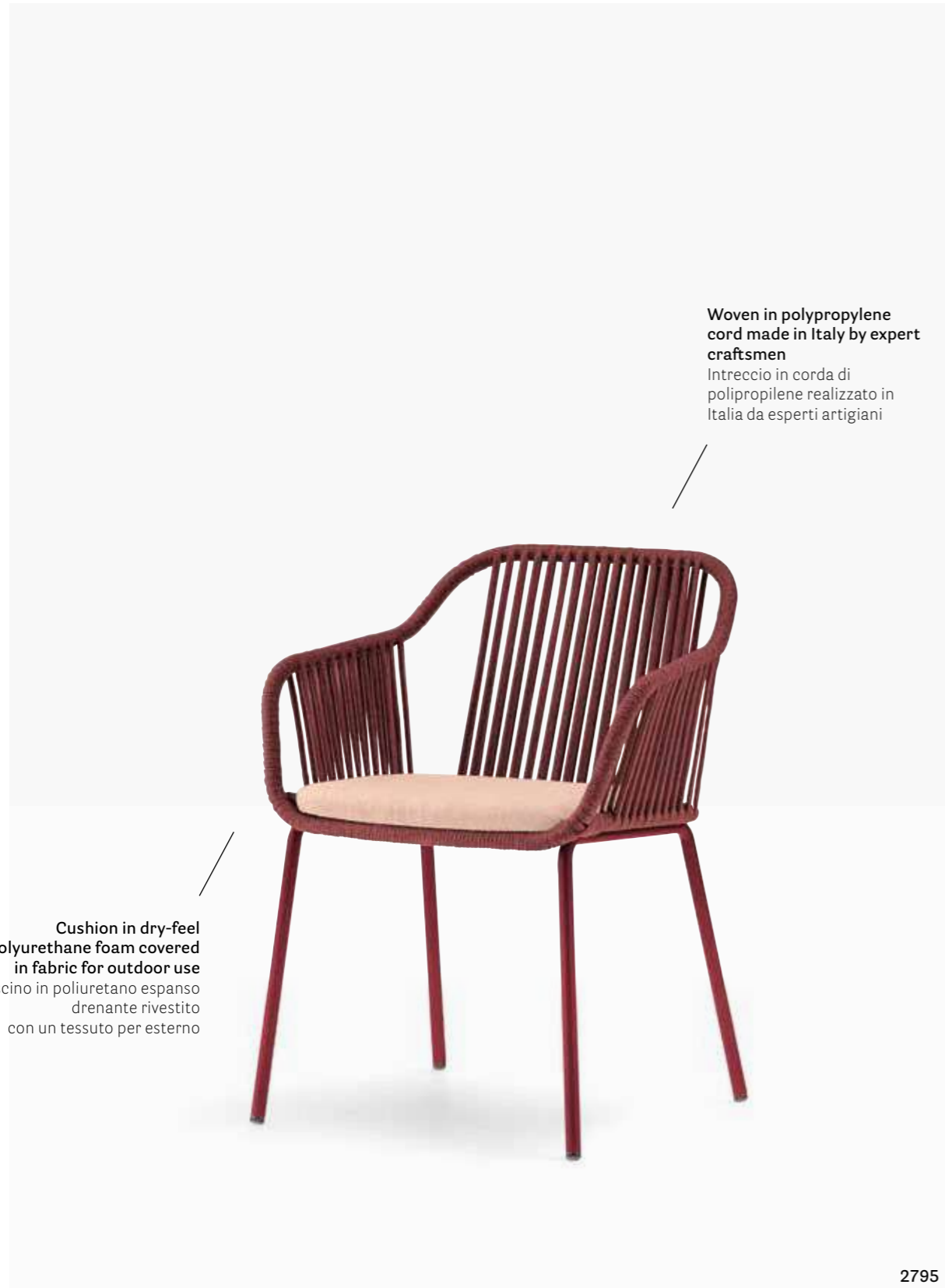


Armchair poltrona Babila Twist



Armchair poltrona Babila Twist
Table tavolo Anemos
Lighting lampada Giravolta

ARMCHAIR



Woven in polypropylene cord made in Italy by expert craftsmen
Intreccio in corda di polipropilene realizzato in Italia da esperti artigiani

Cushion in dry-feel polyurethane foam covered in fabric for outdoor use
Cuscino in poliuretano espanso drenante rivestito con un tessuto per esterno

2795

ARMCHAIR



Tubular steel frame
Struttura in tubo d'acciaio
Ø 0.78 in, 20 mm

#PedraliBacktoNature

Salone del Mobile.Milano 2023
Milan, Italy

Project: Exhibition stand
Architect and Styling: DWA Design Studio
Products: Babila Twist armchair, Anemos table, Giravolta lighting



Private villa in Sicily

Noto, Italy

Project: Private villa
Products: Babila Twist armchair, Philía armchair

#PedraliNewHorizons

Salone del Mobile.Milano 2022
Milan, Italy

Project: Exhibition stand

Architect: CalviBrambilla

Stylist: Studio Salaris

Products: Babila Twist armchair, Babila table



SIZES / DIMENSIONI

mm - in

2795

Armchair, shell woven with
a polypropylene cord, steel tube frame



FINISHES / FINITURE

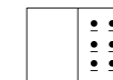


cord / corda

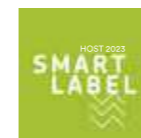


fabrics and powder coated / tessuti e verniciato

→ see from page 372
guarda da pagina 372



AWARDS / PREMI



CERTIFICATES / CERTIFICAZIONI

Safety, strength and durability tests / Prove di sicurezza,
resistenza e durata
EN 1728:2012+AC2013 — EN 16139:2013 level 2

Gossip

Sinuuous shapes

DESIGN
Claudio Dondoli - Marco Pocci, 2021

EN — In 2021 Gossip, the armchair with sinuous and rounded shapes, is proposed in polypropylene. It is also available in the recycled grey version, made of recycled polypropylene.

IT — Nel 2021 Gossip, la poltroncina dalle forme morbide e avvolgenti, viene realizzata in polipropilene. È inoltre proposta in versione recycled grey, in polipropilene riciclato.



ARMCHAIR

**50% from post-consumer waste
and 50% industrial waste**
50% da scarto di materiale plastico post consumo e
50% da scarto di materiale plastico industriale



621RM

ARMCHAIR



621

ARMCHAIR





Hotel Terrou-Bi

Dakar, Senegal

Project: Hotel

Products: Gossip armchair

SIZES / DIMENSIONI

mm - in

621

Polypropylene armchair



621RM

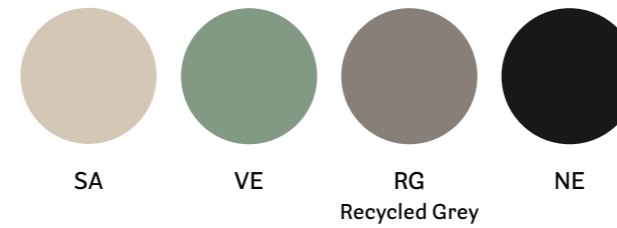
Recycled polypropylene armchair



FINISHES / FINITURE



polypropylene / polipropilene



SA

VE

RG
Recycled Grey

NE

CERTIFICATES / CERTIFICAZIONI

Safety, strength and durability tests / Prove di sicurezza, resistenza e durata
EN 1728:2012+AC2013 — EN 581-1:2017 — EN 581-2:2015+AC:2016



Sunset

Lounge horizon

DESIGN
Alessandro Busana, 2017

EN — Sunset is a collection of lounge modular seating. A squared volume in polyethylene, with fine roundness downward, embraces the wide seat while the flat upper side becomes a restful armrest. The horizontal lines along the outer profile create a rhythmic play which enlarge the cosy look of the seating.

IT — Sunset è una collezione di sedute lounge modulari. Un volume squadrato in polietilene abbraccia l'ampia seduta mentre il bordo superiore appiattito diventa un bracciolo. Le linee orizzontali che corrono lungo il perimetro esterno creano un gioco ritmico che amplifica l'aspetto avvolgente della seduta.



SOFA



**Removable cushion,
water resistant fabric**
Cuscino sfoderabile,
tessuto resistente all'acqua

Two-seater sofa
Divano a due posti
59.0x31.5 in
1500x800 mm

Seat height
cushion included
Altezza seduta
incluso cuscino
17.7 in, 450 mm



625 + 625.10 + 625.30

Hpl top for single or double armrest
Ripiano in Hpl per bracciolo
singolo o per doppio bracciolo



625 + 625.10 + 625.20

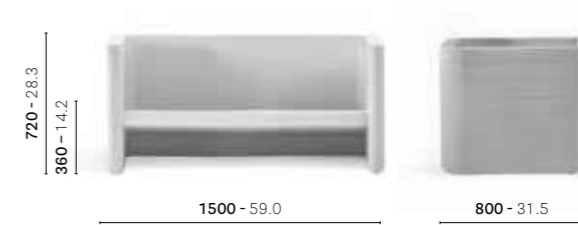
625

Polyethylene lounge armchair



626

Polyethylene two seats sofa



625.10

Set of cushions for
seat and back
WIDTH: 585 - 23.0



625.3

Cushion for seat
only
WIDTH: 585 - 23.0



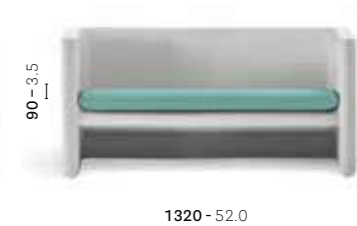
626.10

Set of cushions for seat and back
WIDTH: 585 - 23.0



626.3

Cushion for seat only
WIDTH: 585 - 23.0



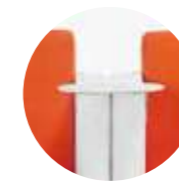
625.20

Hpl top for single armrest



625.30

Hpl top for double armrest

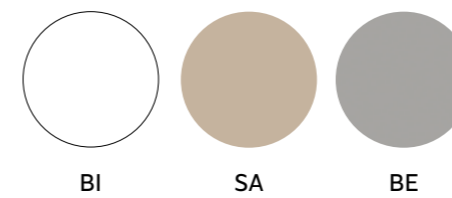


We suggest to remove the cushions
over night and in rainy days
Si consiglia di ritirare i cuscini durante
la notte e in caso di pioggia

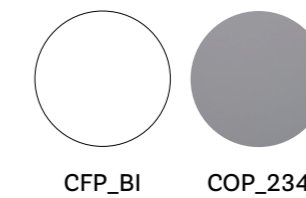
FINISHES / FINITURE



polyethylene / polietilene

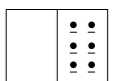


solid laminate / stratificato



fabrics / tessuti

→ see page 374
guarda pagina 374



Plus

Balanced volumes and formal elegance

DESIGN

Alessandro Busana, 2010

EN — Designed for outdoor, as well for interior spaces, Plus armchair and sofa create a new dialogue between aesthetic and versatility of application. A collection which wisely combines generous volumes with formal elegance of design, in a perfect balance of comfort and functionality.

IT — Pensati sia per l'outdoor, sia per le ambientazioni indoor, la poltroncina e il divano Plus richiamano un nuovo dialogo tra personalità estetica e versatilità d'uso. Una collezione capace di sintetizzare sapientemente volumi generosi ed eleganza formale, in un equilibrio perfetto di comfort e funzionalità.



ARMCHAIR

Injection moulding
polypropylene
Polipropilene
stampato a iniezione

Stackable
Impilabile



630

ARMCHAIR

Indoor & Outdoor



Rotomolded
polyethylene
Polietilene
rotazionale

Cushion for
outdoor
Cuscino per
esterno



630 + 630.3



631 + 631.3

SOFA



Two-seater sofa
Divano a due posti

636 + 636.3

Private House

Brescia, Italy

Project: Private House

Products: Plus Air lounge armchair
and sofa, Wow pouf





Park Hotel ai Cappuccini

Gubbio, Italy

Project: Hotel
Products: Plus armchair,
Bold table

SIZES / DIMENSIONI

mm - in

630
Polypropylene armchair



631
Polyethylene lounge armchair



636
Polyethylene sofa



630.3
Cushion for armchair only
WIDTH: 430 - 16.9



631.3
Cushion for lounge armchair only
WIDTH: 515 - 20.3



636.3
Cushion for sofa only
WIDTH: 515 - 20.3

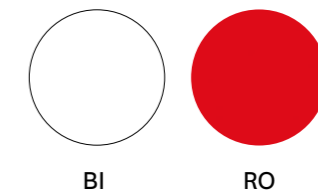
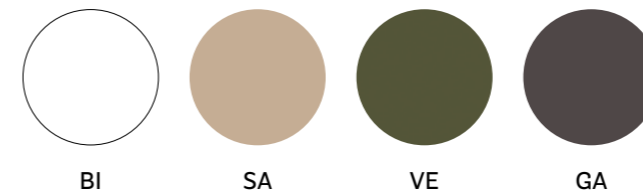


FINISHES / FINITURE



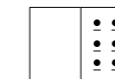
polypropylene
polipropilene (Plus armchair)

polyethylene
polietilene (Plus Air lounge armchair and sofa)



fabrics / tessuti

→ see page 374
guarda pagina 374



CERTIFICATES / CERTIFICAZIONI

Safety, strength and durability tests
Prove di sicurezza, resistenza e durata
EN 1728:2000



For 630

Ara

Timeless seduction

DESIGN
Jorge Pensi Design Studio, 2011

EN — Ara collection made in polypropylene with its aesthetic language, refined and well-balanced, becomes so unique thanks to the peculiarity of the handle at the end of the backrest.

IT — Il linguaggio formale, equilibrato ed elegante della collezione Ara, realizzata in polipropilene, è reso unico dalla caratteristica maniglia posta all'estremità dello schienale, capace di connotare la seduta rendendola al contempo funzionale e stilisticamente riconoscibile.



SIDE CHAIR



Seat height
Altezza seduta
18.1 in, 460 mm

310

ARMCHAIR



315/CL1



315

SIDE CHAIR — ARMCHAIR

Handle in the upper
part of the backrest
Maniglia nella parte
alta dello schienale



LOUNGE ARMCHAIR



316

LOUNGE ARMCHAIR



Nò-Do

Paratico, Italy

Project: Restaurant
Products: Ara side chair and armchair, Ikon table



Temporary installation

Brescia, Italy

Project: Outdoor
Products: Ara armchair, Ypsilon table



Green Design Landscape Festival

Città Alta,
Bergamo, Italy

Project: Temporary installation

Products: Ara Lounge armchair,
Ypsilon coffee table

SIZES / DIMENSIONI

mm - in

310

Polypropylene side chair



315

Polypropylene armchair



316

Polypropylene lounge armchair



310/CL1

Polypropylene side chair, fire-retardant grade



315/CL1

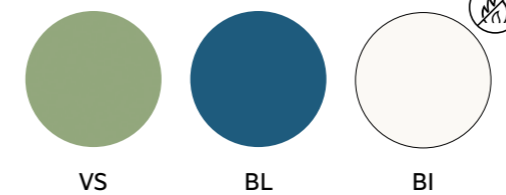
Polypropylene armchair, fire-retardant grade



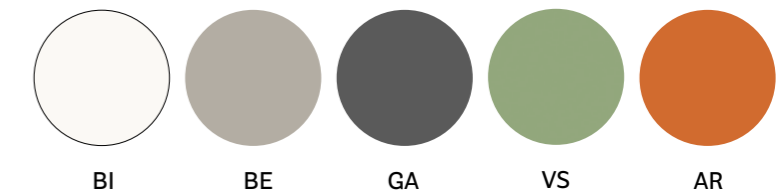
FINISHES / FINITURE



polypropylene / polipropilene (Ara side chair and armchair)



polypropylene / polipropilene (Ara lounge armchair)



CERTIFICATES / CERTIFICAZIONI

Safety, strength and durability tests /
Prove di sicurezza, resistenza e durata
EN 1728:2012+AC2013 — EN
16139:2013 level 2 — EN 1728:2000



For
310 - 315 - 316



German
Design Award
SPECIAL
MENTION 2015



reddot design award
winner 2013

Tatami

Weaving inspiration

DESIGN
Claudio Dondoli - Marco Pucci, 2009

EN — Tatami is a collection of polypropylene chair which expresses desire to live at open air. The peculiar weaving of the shell guarantees comfort and encourages relax.
IT — La collezione di sedute in polipropilene Tatami esprime la voglia di vivere degli spazi aperti. Il caratteristico intreccio della scocca garantisce un comfort adeguato per favorire relax e benessere.



SIDE CHAIR



305





Armchair poltrona Tatami
Table tavolo Ikon



Gas air moulding
polypropylene,
100% recyclable
Polipropilene stampato
con il supporto del gas,
100% riciclabile



306



Adaptation of a Forge

Stettino, Poland

Project: Private House
Architect: Loft Kolasinski
Product: Tatami armchair

Playa Blanca

Punta Cana, Santo Domingo

Project: Restaurant
Products: Tatami side chair,
Arki-Table





Cenador en las Rotas de Dénia

Denia, Spain

Project: Private House

Architect: Destudio

Product: Tatami armchair

Private House

Brescia, Italy

Project: Private House

Products: Tatami armchair, Togo table



SIZES / DIMENSIONI

mm - in

305

Polypropylene side chair



306

Polypropylene armchair



FINISHES / FINITURE



polypropylene / polipropilene



CERTIFICATES / CERTIFICAZIONI

Safety, strength and durability tests / Prove di sicurezza, resistenza e durata
EN 1728:2000



Volt

Injection of dynamism

DESIGN
Claudio Dondoli - Marco Pocci, 2013

EN — The thin sections, along with ergonomic shape and lovely proportions make Volt a collection of polypropylene chairs that stands out for attention to details. Volt is elegant, cozy, equally lightweight and handy, featured by thin edges and chamfered profiles. All the models in the collection are also available with padded seat version.

IT — Il tratto sottile, la forma ergonomica e le gradevoli proporzioni rendono Volt una collezione di sedute in polipropilene che si distingue per la cura dei dettagli. Leggera e facile da maneggiare, caratterizzata da spessori esili e profili smussati, Volt è elegante e accogliente. Tutti i modelli della collezione sono disponibili anche con sedile imbottito.



SIDE CHAIR



670/CL1



670

SIDE CHAIR



SIDE CHAIR



SIDE CHAIR — ARMCHAIR



High backrest
Schienale alto
32.9 in, 835 mm



673

ARMCHAIR



Low backrest
Schienale basso
30.5 in, 775 mm

675

BARSTOOL

Seat height
Altezza seduta
30.1 in, 765 mm



Seat height
Altezza seduta
26.0 in, 660 mm



Golden Milos Beach Hotel

Milos, Greece

Project: Restaurant

Products: Volt armchair



Sebbah House

Begur, Spain

Project: Private House

Architects: Pepe Gascón Arquitectura,
Asa Alexandre Boulín

Products: Volt armchair, Arki-Table



Private penthouse

Marsascala, Malta

Project: Private House

Architect: DAAA HAUS

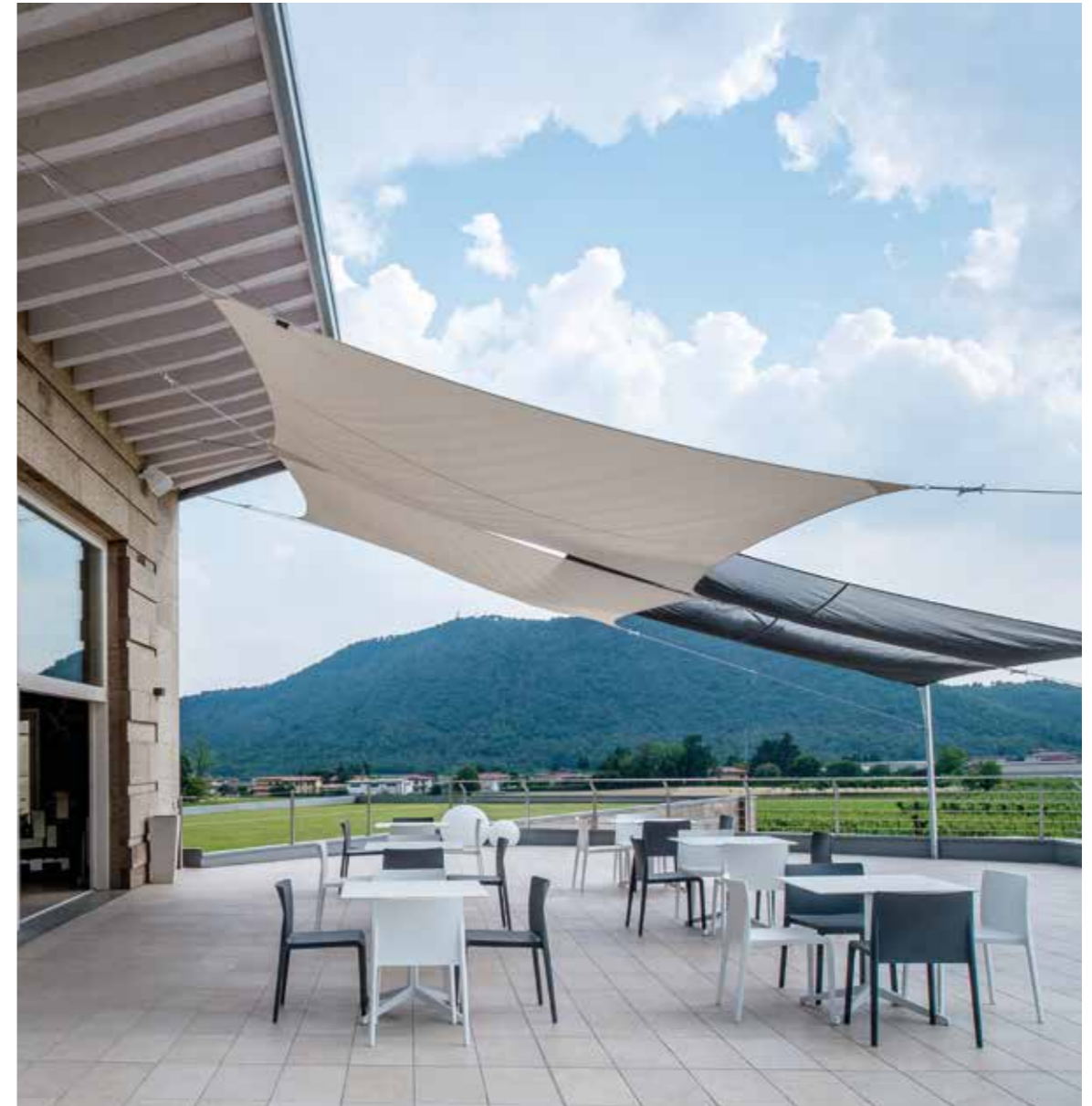
Products: Arki-Table, Volt side chair and armchair

Derbusco Cives

Erbusco, Italy

Project: Coffee bar

Products: Volt side chair,
Ypsilon table, Happy Apple lighting



670
Polypropylene side chair



670RM
Recycled polypropylene side chair



670/CL1
Polypropylene side chair, fire-retardant grade



673
Polypropylene side chair, high back



673RM
Recycled polypropylene side chair, high back



674
Polypropylene armchair, high back



674RM
Recycled polypropylene armchair, high back



675
Polypropylene armchair



675RM
Recycled polypropylene armchair



675/CL1
Polypropylene armchair, fire-retardant grade



677
Polypropylene barstool



677RM
Recycled polypropylene barstool



678
Polypropylene barstool



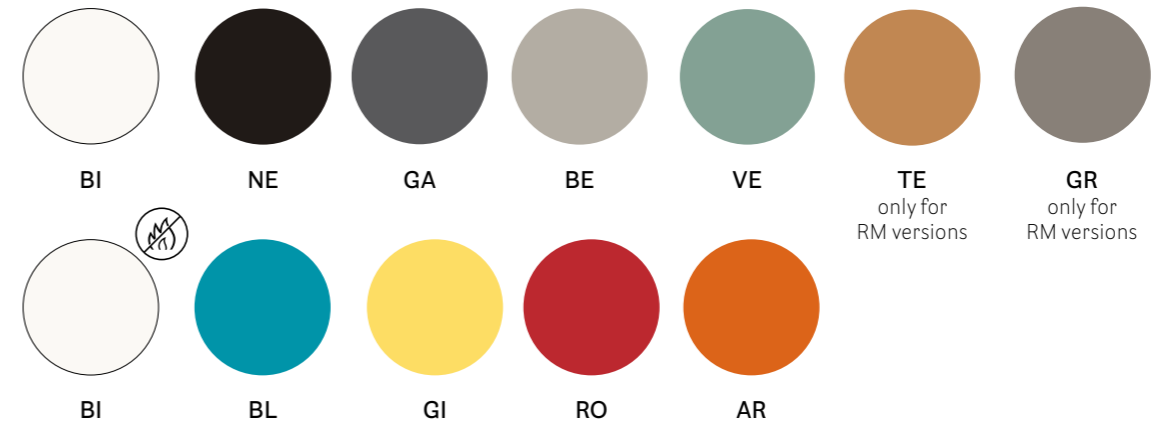
678RM
Recycled polypropylene barstool



FINISHES / FINITURE



polypropylene / polipropilene



CERTIFICATES / CERTIFICAZIONI

Safety, strength and durability tests / Prove di sicurezza, resistenza e durata
EN 1728:2012+AC2013 — EN 16139:2013 level 2 — ANSI-BIFMA X5.1-2017



For
670 - 673 - 674 - 675 - 677 - 678

AWARDS / PREMI



reddot award 2014
winner

Snow

Organic shapes

DESIGN
Odo Fioravanti, 2008

EN — The playful form, adaptability to indoor and outdoor environments and stackability make the Snow chair a new classic. Snow table project took life from the idea to communicate the same dynamism and speed of the chair.

IT — La forma giocosa, l'adattabilità agli ambienti esterni e interni e l'impilabilità hanno reso la collezione di sedute in polipropilene Snow un nuovo classico. Snow table nasce dall'idea di comunicare le stesse sensazioni di dinamismo e velocità della sedia.



CHAIR



CHAIR





Chalet Pinocchio

Brentonico, Italy

Project: Hotel
Products: Snow chair,
Bold table



SIZES / DIMENSIONI

mm - in

300

Polypropylene chair



300/CL1

Polypropylene chair,
fire-retardant grade



303

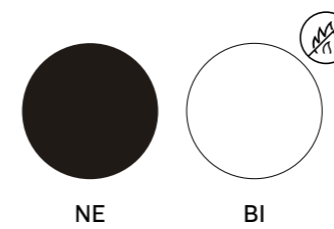
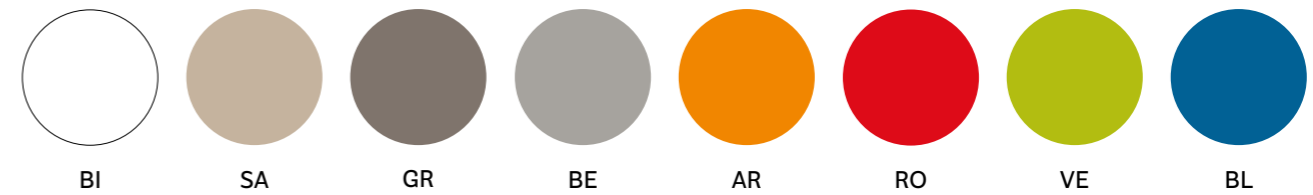
Polypropylene junior chair



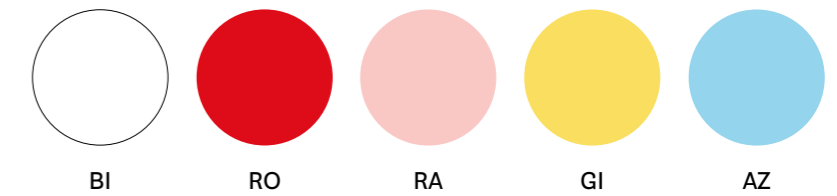
FINISHES / FINITURE



polypropylene / polipropilene (Snow chair)



polypropylene / polipropilene (Snow junior chair)



CERTIFICATES / CERTIFICAZIONI

Safety, strength and durability tests / Prove di sicurezza, resistenza e durata
EN 1728:2000 — ANSI-BIFMA X5.1-2017
EN 1728:2012+AC2013 — EN 16139:2013 level 2



AWARDS / PREMI



Giravolta

The wireless outdoor lighting

DESIGN

Alberto Basaglia - Natalia Rota Nodari, 2017

EN — Inspired by Lanterns of times past, it is a wireless lighting distinguished by a contemporary design and suitable for outdoor environments. The name reflects its essence: the swivelling diffuser and the rechargeable feature recalls the great inventor Alessandro Volta and his main discovery, the battery.

IT — Ispirata alle lanterne di un tempo, Giravolta è una lampada wireless ricaricabile dal design contemporaneo, adatta per l'outdoor. Nel nome tutta la sua essenza: da un lato il suo diffusore orientabile, dall'altro il suo essere ricaricabile da cui il riferimento ad Alessandro Volta e alla sua principale invenzione, la pila.



**touch control
and three light
intensities**
dispositivo touch
di accensione,
regolazione di tre
diverse intensità
luminose e
spegnimento

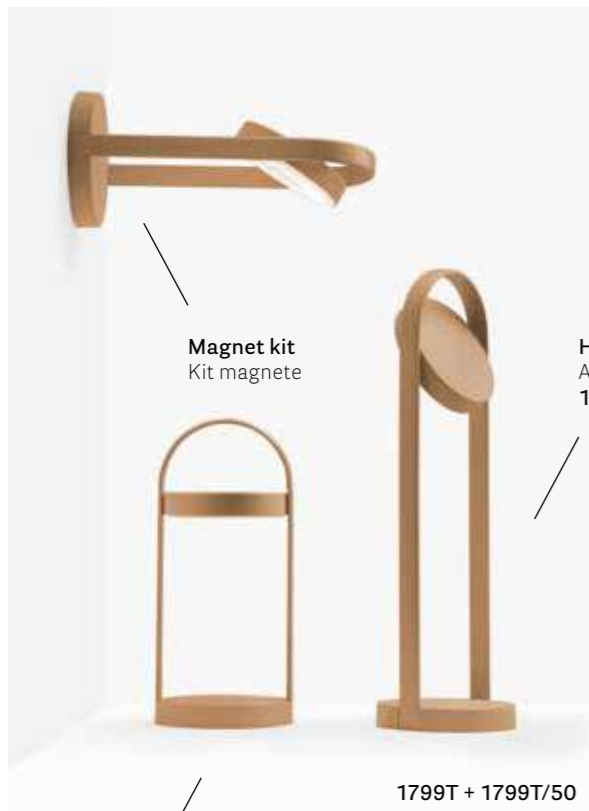
**Lithium battery:
over 8 hours operating time**
Batteria al litio:
durata per oltre 8 ore

**60 LED light source
2W, 3000 K**



1799T

LIGHTING

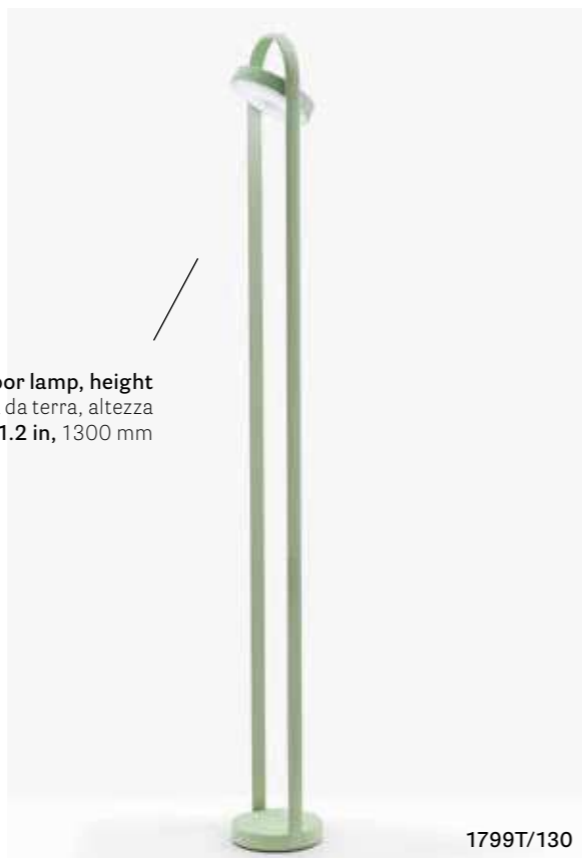


Magnet kit
Kit magnete

Height
Altezza
19.7 in, 500 mm

1799T + 1799T/50

Height
Altezza
13.0 in, 330 mm



floor lamp, height
lampada da terra, altezza
51.2 in, 1300 mm

1799T/130



Green Design Landscape Festival

Città Alta, Bergamo, Italy

Project: Temporary installation

Products: Giravolta lighting, Philia armchair, Nari armchair, Ypsilon table, Hevea pot-holder, Nolita sofa, Nolita Relax lounge armchair, Caementum coffee table





Host

2019
Milan, Italy

Project:
Exhibition stand
Architect:
CalviBrambilla
Products: Giravolta
lighting, Tribeca side
chair, Nolita table

SIZES / DIMENSIONI

mm - in

1799T

Wireless polypropylene
and aluminium lighting



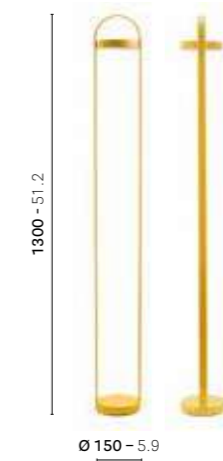
1799T/50

Wireless polypropylene
and aluminium lighting



1799T/130

Wireless polypropylene
and aluminium lighting



1799_MGN_10

Magnet kit, suitable for items
1799T and 1799T/50



FINISHES / FINITURE



polypropylene and aluminium / polipropilene e alluminio



electrical features / caratteristiche elettriche

- **Light:** LED ARRAY 2W 3,7V 500mA 3000K 157 lm Class III
- **Battery:** Lithium battery (Li-Po), over 8 hours operating time
- **Cable:** black, length 1,3 mtrs, with micro USB cable and battery charger with Europlug type C (europlug 7/16), for indoor use

AWARDS / PREMI



CERTIFICATES / CERTIFICAZIONI

IEC 60598-2-4:1997 (Second Edition) used in conjunction with IEC 60598-1:2014 (Eighth Edition)
EN 60598-2-4:1997 used in conjunction with EN 60598-1:2015 (test report N°0099CE17)
IEC 60598-2-4:1997 (Second Edition) usato in conformità con IEC 60598-1:2014 (Ottava Edizione)
EN 60598-2-4:1997 usato in conformità con EN 60598-1:2015 (test report N°0099CE17)



IP65 Suitable for outdoor use / IP65 Adatto per uso esterno

Happy Apple

Lighting temptation

DESIGN
Alberto Basaglia - Natalia Rota Nodari, 2012

EN — Happy Apple is a collection of lamps made-up of polyethylene lighting body that perfectly fits both indoor and outdoor use. Multipurpose and versatile, it can be a pendant lamp, a floor lamp or an applique.

IT — Happy Apple è una collezione di lampade realizzata con corpo illuminante in polietilene che si adatta perfettamente sia all'uso interno sia alla collocazione outdoor. Polivalente e versatile, può essere una lampada a sospensione, da terra, oppure un'applique da parete.

Floor lamp in rotational moulded polyethylene, low energy consumption available in three sizes

Lampada da terra a basso consumo energetico in polietilene rotazionale disponibile in 3 dimensioni
Ø 19.7, 31.5, 47.2 in
Ø 500, 800, 1200 mm

Energy class A+ bulb
Lampadina di classe energetica A+

SIZES / DIMENSIONI

mm - in

330E

Floor polyethylene lighting for outdoor



Pendant polyethylene lighting for outdoor



331E

Floor polyethylene lighting for outdoor



Pendant polyethylene lighting for outdoor



332E

Floor polyethylene lighting for outdoor



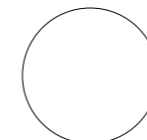
FINISHES / FINITURE



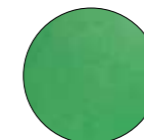
polyethylene
polietilene

cap and handle
tappo e maniglia

electrical features
caratteristiche elettriche



BI



VE

• Light:
MAX 1x32W E27 220-240V 50/60 Hz IP65 Class II

Light bulb included / Lampadina inclusa

CERTIFICATES / CERTIFICAZIONI

330E-331E-332E
IEC 60598-2-4:2017 used in conjunction with IEC 60598-1:2014, AMD1:2017
EN 60598-2-4:2018 used in conjunction with EN 60598-1:2015 + A1:2018 (test report N°0011CE19)
IEC 60598-2-4:2017 usato in conformità con IEC 60598-1:2014, AMD1:2017
EN 60598-2-4:2018 usato in conformità con EN 60598-1:2015 + A1:2018 (test report N°0011CE19)



Time Out

Soft atmosphere

DESIGN

Alberto Basaglia - Natalia Rota Nodari, 2011

EN — Time Out is a floor lamp in polyethylene designed to illuminate gardens, terraces and outdoor spaces. Simple and well-made, its archetyp design offers practical handling. Time Out is particularly suitable for valorizing contemporary or classic environments.

IT — Time Out è una lampada da terra in polietilene stampato pensata per illuminare giardini, terrazze e zone outdoor. Pratica da movimentare, grazie alla sua forma archetipica, Time Out è particolarmente adatta per inserirsi in ambienti contemporanei o classici.



Floor lamp in rotational moulded polyethylene
Lampada da terra in polietilene stampato in rotazionale

SIZES / DIMENSIONI

mm - in

T_OUT/BI_LUCE
Polyethylene lighting

T_OUT_FIX
Floor fixing kit

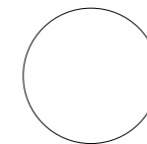


FINISHES / FINITURE



polyethylene / polietilene

electrical features / caratteristiche elettriche



BI

- **Light:** MAX 2x27W E27 220-240V 50/60 Hz IP44 Class II

Lighting kit included / Kit illuminazione compreso

CERTIFICATES / CERTIFICAZIONI

IEC 60598-2-4:1997 used in conjunction with IEC 60598-1:2008+A11:2009
EN 60598-2-4:1997 used in conjunction with EN 60598-1:2008+A11:2009 (test report N°0280CE11)
IEC 60598-2-4:1997 usato in conformità con IEC 60598-1:2008+A11:2009
EN 60598-2-4:1997 usato in conformità con EN 60598-1:2008+A11:2009 (test report N°0280CE11)



Kado

We love green spaces

DESIGN
Pedrali R&D, 2010

EN — A seat that turns into a vase. A vase that is also a luminous object. A versatile and modern space divider. Made of polyethylene, with a matt finish and available in anthracite grey, light grey, bronze and white, Kado is characterized by a minimalist design.

Shock resistant and weatherproof, non-toxic and fully recyclable.

IT — Una seduta che diventa vaso. Un vaso che è anche oggetto luminoso. Uno space divider versatile e moderno. Realizzato in polietilene con finitura opaca e disponibile nei colori grigio antracite, grigio chiaro, bronzo e bianco, Kado è caratterizzato da linee geometriche essenziali. Resistente agli urti e agli agenti atmosferici, è atossico e completamente riciclabile.

Rotational moulding polyethylene with matt finish, 100% recyclable and non toxic

Polietilene rotazionale a finitura opaca, 100% riciclabile e atossico

Height
Altezza
39.4 in, 1000 mm

Height
Altezza
23.6 in,
600 mm





Private House

Brescia, Italy

Project: Private House

Products: Kado pot, Serif barstool,
Bold table

SIZES / DIMENSIONI

mm - in

KADO

Polyethylene pot



KADO2

Polyethylene pot



KADO_LUCE

Lighting kit only



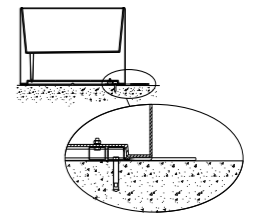
KADO_TROLLEY

Steel trolley only
DEPTH: 290



KADO_FIX

Floor fixing kit only



FINISHES / FINITURE



polyethylene / polietilene



electrical features / caratteristiche elettriche

- Light KADO_LUCE: MAX 1x40W E27 HSG or FBT 220-240V 50/60Hz Cl.1 IP44

CERTIFICATES / CERTIFICAZIONI

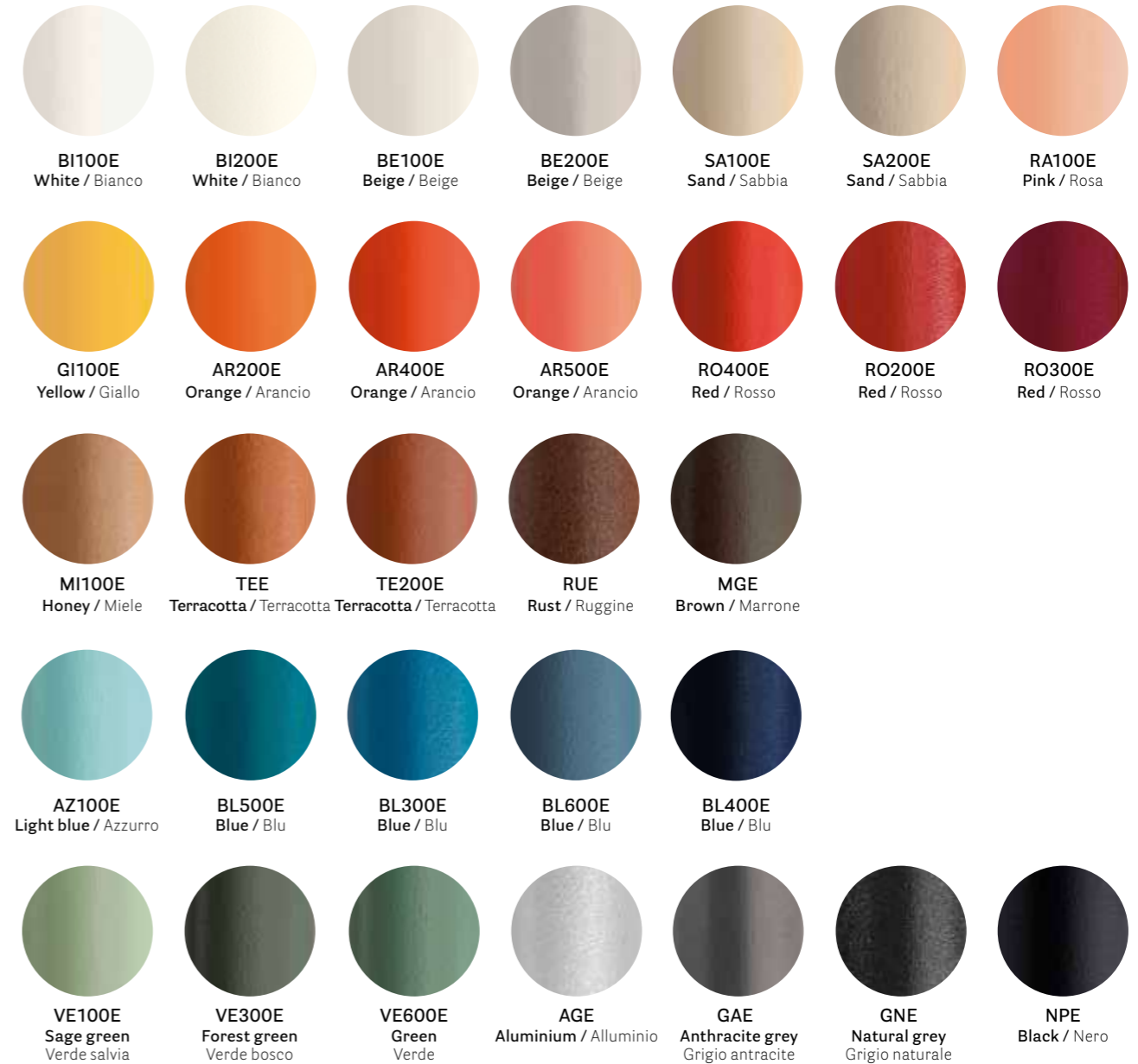
KADO_LUCE
IEC 60598-2-4:2017 used in conjunction with IEC 60598-1:2014, AMD1:2017
IEC 60598-2-4:2017 usato in conformità con IEC 60598-1:2014, AMD1:2017
EN 60598-2-4:2018 used in conjunction with EN 60598-1:2015 + A1:2018 (test report N°0019CE19)
EN 60598-2-4:2018 usato in conformità con EN 60598-1:2015 + A1:2018 (test report N°0019CE19)



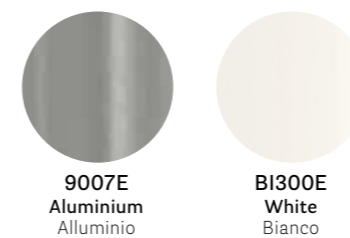
Outdoor finishes

Finiture per esterno

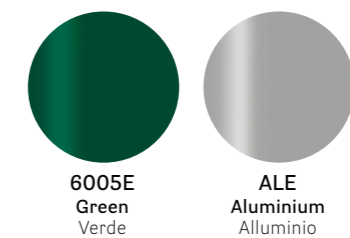
textured matt finishes / finitura goffrata opaca



smooth matt finishes / finitura liscia opaca

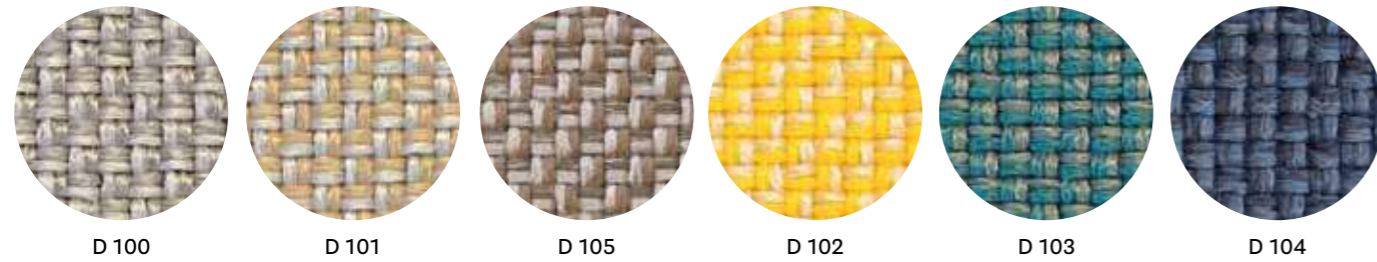


smooth glossy finishes / finitura liscia lucida



CATEGORY D / CATEGORIA D

PEDRALI — ZEFIRO



PEDRALI — SAND

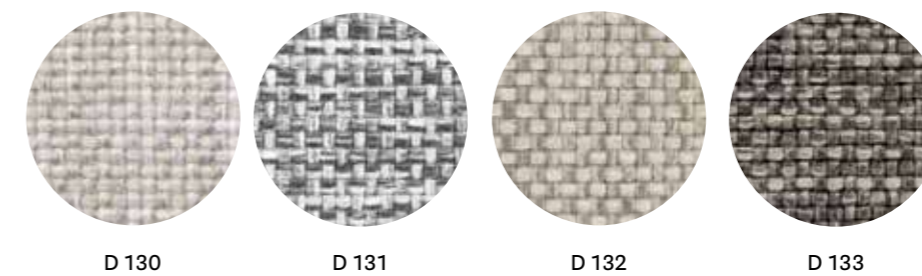
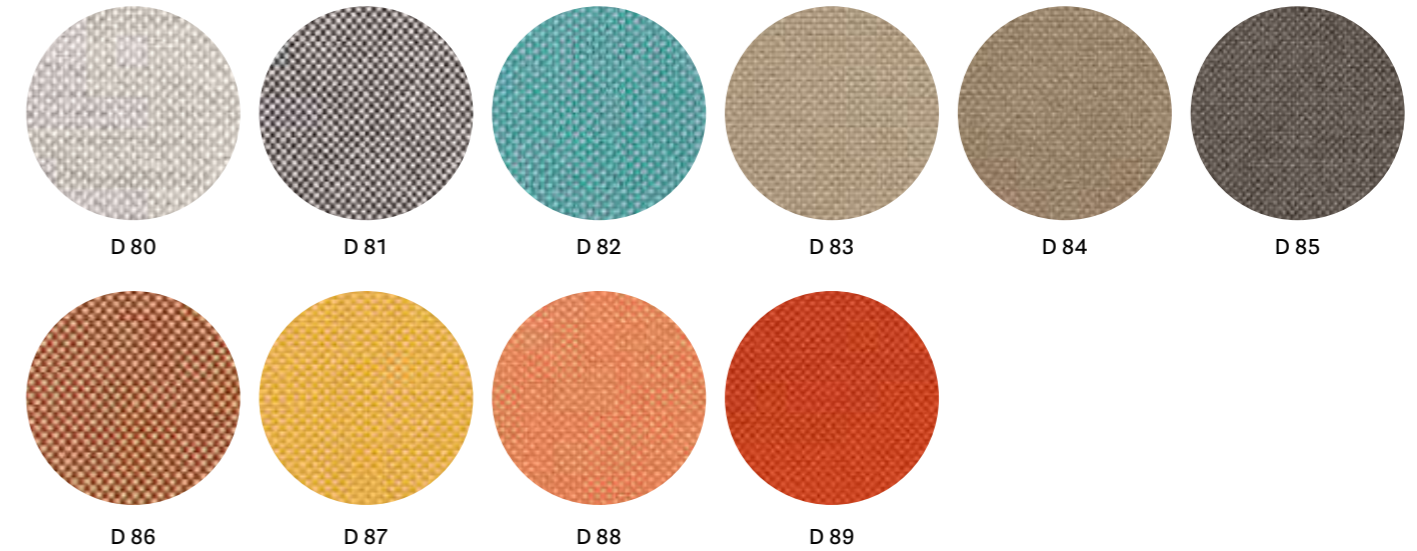


PEDRALI — BREZZA



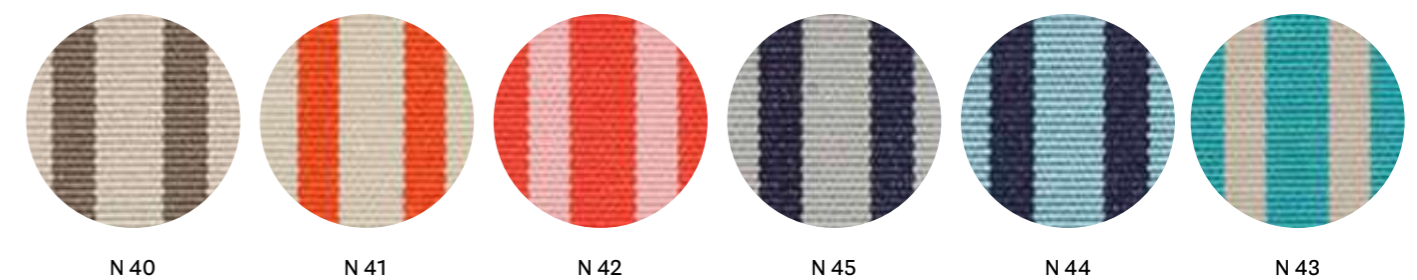
CATEGORY D / CATEGORIA D

PEDRALI — FLORIDA



CATEGORY N / CATEGORIA N

only for fitting cushions collection / collezione solo per cuscini accessori



Pedrali Outdoor | Edition 2025

Copyright © 2025, Pedrali S.p.A. All rights reserved

Print Intese Grafiche

Photo credits

BHM Studio

Beppe Brancato

Andrea Garuti

Mattia Pagani

Ottavio Tomasini

Studio FM

Alia Hoballah

Andrea Martiradonna

Antonis Eleftherakis

Carlo Baroni

Carmela Capriati

George Sfakianakis

Germán Cabo

Giorgio Baroni

Ivona Bezmalinovic

Janez Marolt

Jonathan Van Der Knaap

José Hevia

Loft Kolasinski

Mantonankis Ike

Maria Eugenia Márquez -

MXM

Marthe Natens

Matteo Bellomo

Mattia Aquila

Mirto Iatropoulou

Nour El Refai

Piero Annoni

Samuele Castiglione

Umberto Daniello

Vangelis Paterakis

Vincent Bourdon

Yorgos Kordakis

Thanks to

Alessi

Andreatti Chiara

Bohem Fiori

Borrós Interiorisme

CC-Tapis

Delsey

Eastpack

Gio Pastori

Interno 8

Marazzi

Mario Luca Giusti

Mario Pedrali

Mepra

Mohebban

Moleskine

Probeat

Society

Style Design Architects

Styling

Elena Caponi

Sissi Valassina

Studio Salaris



Look for CATAS certified products

Cerca i prodotti certificati CATAS

Pesi, dimensioni e colori sono indicativi. Pedrali si riserva la facoltà di apportare modifiche o migliorie senza alcun preavviso.

Weights, measurements and colours are indicative. Pedrali reserves the right to modify or upgrade the products without prior notice.



Look for GREENGUARD certified products

Cerca i prodotti certificati GREENGUARD

Industrial property right | Diritto di proprietà industriale

I contenuti del presente catalogo, quali, a titolo esemplificativo, le opere, le immagini, le fotografie, i documenti, i disegni, le figure, i loghi ed ogni altro materiale, in qualsiasi formato, pubblicato sono protetti a livello mondiale dal diritto d'autore e da ogni altro diritto di proprietà intellettuale di PEDRALI.

The contents of the present catalogue such as, by way of example, the works, the images, the pictures, the documents, the drawings, the forms, the logos and all other materials, published in any format, are worldwide protected by copyrights and any other industrial intellectual property right of Pedrali.

