



CASTRO  
LIGHTING



# CASTRO

## LIGHTING

### A MESSAGE FROM THE FOUNDER

*Welcome to Castro Lighting.*

*My whole life has been dedicated to lighting design, and the company I created back in '78 is my pride.*

*Here is my commitment to deliver the finest lighting creations in the world  
crafted with passion, devotion, and with the utmost attention to detail.*

A handwritten signature in dark ink, appearing to read 'Modesto A. F. Castro'. The signature is fluid and cursive, with a large initial 'M'.

MODESTO A. F. CASTRO



007

THE BRAND

- 7 HISTORY
- 8 MATERIALS
- 11 DESIGN
- 12 TECHNOLOGY

015

LIGHTING  
COLLECTIONS

- 15 MODERN
- 145 CRYSTAL
- 159 CLASSIC

169

PROJECTS &  
PARTNERSHIPS

195

TECHNICAL  
INFORMATION

196

CUSTOMIZATION

- 197 **BRASS FINISHES**
- 198 **CRYSTALS**
- 199 **GLASS COLORS**
- 200 **MARBLES**
- 200 **LACQUERED COLORS**
- 200 **CABLES**
- 201 **LAMPSHADE FABRICS**



# DISTINCTIVE HANDCRAFT EXPERTS FOR MORE THAN 40 YEARS

Since 1978 Castro Lighting expressed the commitment to never forget its roots, valuing strong traditions while implementing innovative techniques regarding the meticulously handcrafted lighting production.

More than 40 years of accomplishments manifest refinement every day. Passion, devotion, and endurance, the brand's history is shaped by creators who share the same essence. The secret? Dream bigger and strive to create breathtaking lighting and timeless experiences.

The past decades brought technological advances driven by a pioneer spirit and an incessant need for the creation of extraordinary collections. The development of trailblazing designs is impelled by a single purpose:

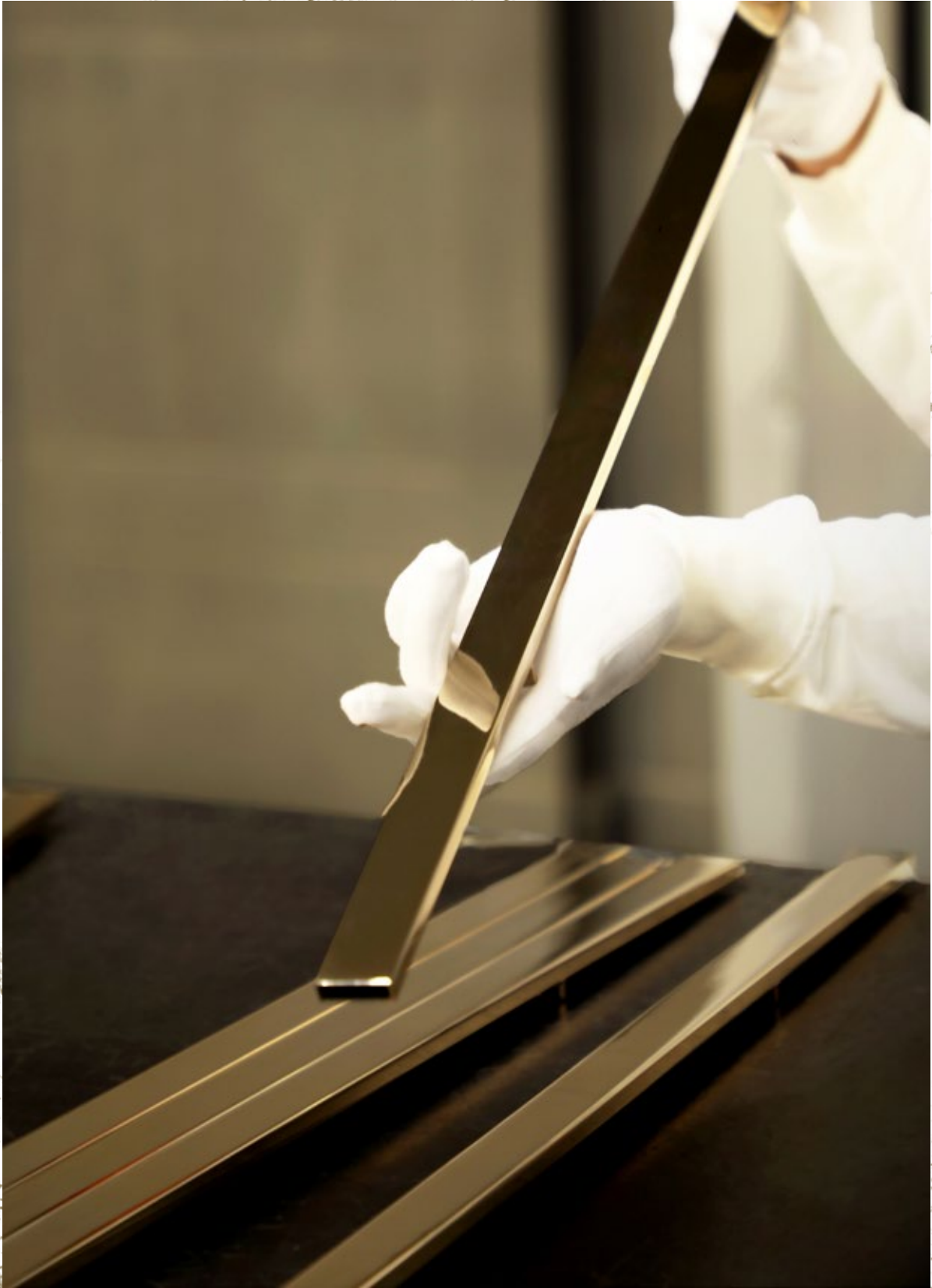
TO CREATE  
A LEGACY IN THE HISTORY  
OF LIGHTING DESIGN



# BRASS CRAFTING MASTERS WITH VISION AND EXPERTISE

Creative brass crafting is an embodiment of an artist's vision, brought to life by their effort and expertise. Castro Lighting's production takes place in its factories in Portugal, where the best quality lighting solutions are created.

The manufacturing process is supervised by experienced professionals who are constantly looking for new and original techniques and approaches. The handling of brass is the history and foundation of Castro Lighting, being its responsibility to inspire and empower future generations to keep the tradition alive. Hand-wrought work can never be entirely replaced by machinery.









# FROM MODERN TO **CLASSIC**, THE IDEAL LIGHTING FOR ANY PROJECT

Throughout the years, while gathering the desirable experience, Castro Lighting took advantage of its proficiency in brass-work production. This allowed the development of more up-to-date, bold, and fresh forms in design. While classic style and influences were the foundation of the brand, a new approach grew within.

The latest collections rejoice with audacity, privilege, and strong statements. The use of noble materials and selected finishes, allied with a youthful and simpler approach to design, turned into a new signature for the brand. A claim of opulence, grandeur, and sophistication.



# THE LATEST INNOVATION MEETS HANDCRAFT PRODUCTION TECHNIQUES

With the perfect combination of ethics, motivation, hard work and passion for industrial design, as well as a fascinating journey of discovery, Castro Lighting became internationally known.

When it comes to brass work, the brand is famous for its singularity, extraordinary quality, and beauty. The ultimate fusion between the authenticity of traditional Portuguese metal-work techniques, artistic masters, and creative craftsmanship, continuously delivers the next step in innovation. Thusly, a wide range of products in different styles, from classic to modern, is created to provide the ideal lighting for any ambience.

Every year represents a new challenge for those who genuinely love and admire majestic designs. Castro Lighting represents a reference point in acquiring customizable lamps in different materials, finishes, and dimensions.

Every lamp perfectly fits the most luxurious interiors, reflecting elegance and fantasy. New collections are developed alongside the best industry players to re-invent functionality, individuality, and beauty.





## MODERN COLLECTION

Modern design is linked to the mid-20th century, with roots in both German and Scandinavian Styles, where a sense of simplicity and clean lines is included in every element of the interior décor. Throughout the years, while gathering experience, Castro Lighting has been taking advantage of its proficiency in brass-work, developing more up-to-date and fresher designs each year, and expressing its own idea of modernity, elegance, functionality, and versatility.

Aiming to provide professionals with innovative modern designs, the collections get a twist with a fresh classic tone that mixes minimal textures and bold geometric forms with polished finishes and asymmetrical balance.

The choice of luxurious finishes and selected materials along with crystals introduces an unforgettable signature of inspiring effortless luxury collections for modern interiors.

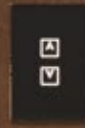




# RAINFOREST



42



MODERN COLLECTION







ALSO FEATURED BY CASTRO: FLUSSO ROUND TABLE + SEDERE ARMCHAIR + HALIMA WALL LIGHT



RAINFOREST

MODERN COLLECTION



ALSO FEATURED BY CASTRO: FLUSSO DINING TABLE + SEDERE DINING CHAIR





*“Immerse yourself into the magnificent atmosphere of the **sparkling** rainforest, where the art of brass craftsmanship becomes **luxury lighting design.**”*

**HOMES & INTERIORS SCOTLAND**

**ALSO FEATURED IN  
HOME DECOR, SINGAPORE**



SUSPENSION 9821.150X50

DIMENSIONS: H.100CM - W.50CM - D.150CM WEIGHT: NET 50KG  
BULBS: 22X G9 (3W) MATERIAL: BRASS & GLASS



# RAINFOREST

PLAY WITH  
UNIQUE  
TEXTURES  
& FINISHES

+ MORE OPTIONS P.197



FLOOR 9823.4

DIMENSIONS: H.140CM - Ø.50CM WEIGHT: NET 15KG  
BULBS: 4X GU10 (6W) MATERIAL: BRASS & MARBLE

CHECK MORE PROJECTS WITH THE FEATURED DESIGN FROM PAGE: 168



WALL 9822.35

DIMENSIONS: H.60CM - W.30CM - D.15CM WEIGHT: NET 6.5KG  
BULBS: 2X G9 (3W) MATERIAL: BRASS & GLASS

## The Rainforest Collection

A broad-leaved masterpiece of modern lighting design along with the falling raindrop takes you to remote spaces and the open sky. A dreamy wall sconce that creates an exceptional ambiance to the classy interiors. A luxury custom-designed collection was made to be organically featured in the most sophisticated projects. The sizes and distribution of the elements can be naturally customizable.

FEATURED IN  
YACHTS CROATIA





# SKYLAR



PROJECT BY: MARINA PUTILOVSKAYA, RUSSIA



*“It brings a special allure and refined lighting detail to the most exquisite interiors.”*

**DARC MAGAZINE, UK**

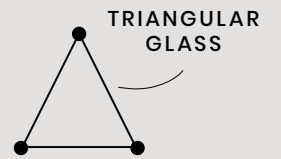


# SKYLAR



SUSPENSION 9870.100

DIMENSIONS: H.35CM - Ø.100CM WEIGHT: NET 45KG  
BULBS: 36X G9 (3W) MATERIAL: BRASS & GLASS



## The Skylar Collection

The Skylar Collection has a stunning glass and brass design that is a "one in a million" kind. Designed to impress, it brings a special allure and refined lighting detail to the most exquisite interiors. Clean lines with softer edges create a streamlined silhouette and vigorous form, which reveal a natural balance between a traditional and futuristic vision in lighting design. It's perfect to create an effortless luxury for contemporary living.



SUSPENSION 9870.40

DIMENSIONS: H.35CM - Ø.40CM WEIGHT: NET 9,5KG  
 BULBS: 6X G9 (3W) MATERIAL: BRASS & GLASS



FLOOR LAMP 21.012

DIMENSIONS: H.170CM - Ø.40CM WEIGHT: NET 20KG  
 BULBS: 6X G9 (3W) MATERIAL: BRASS & GLASS



WALL LIGHT 9871.40

DIMENSIONS: H.65CM - W.40CM - D.25CM WEIGHT: NET 9,5KG  
 BULBS: 6X G9 (3W) MATERIAL: BRASS & GLASS

SUSPENSION | PENDANT

CIELO



MODERN COLLECTION



ALSO  
AVAILABLE



SUSPENSION 9740.1

DIMENSIONS: H.65CM - Ø.28CM WEIGHT: NET 5KG  
BULBS: 3X G9 (3W) MATERIAL: BRASS & GLASS

## Cielo

Feel the powerful energy of this suspension which brass elements complement the refinement of the interior and permit to reveal a new meaning of beauty. Simplicity, smooth textures, and clean glass lines help define this contemporary lighting design as the signature collection fitting to the most exquisite decors.

SUSPENSION 9741.9

DIMENSIONS: H.180CM - Ø.120CM (EACH PENDANT H.65CM - Ø.28CM)  
WEIGHT: NET 70KG BULBS: 27X G9 (3W)  
MATERIAL: BRASS & GLASS



ROYAL



PROJECT BY: MARINA PUTILOVSKAYA, RUSSIA

ALSO FEATURED BY CASTRO: MARIE CENTRE TABLE (SMALL & BIG)



*“The Royal Collection incorporates the luxury and lavishness of the Royal Era, demonstrated in the care for each detail and the use of traditional handcrafting technics.”*

**MODERN HOMES, UK**

SUSPENSION 9160.100

DIMENSIONS: H.100CM - Ø.100CM WEIGHT: NET 65KG  
BULBS: 27X G9 (3W) MATERIAL: BRASS & GLASS



ROYAL



PROJECT BY: ALENA CHASHKINA, RUSSIA

ALSO FEATURED BY CASTRO: ROYAL SUSPENSION OVAL



WALL LIGHT 9161.40

DIMENSIONS: H. 55CM - W. 40CM - D. 25CM WEIGHT: NET 9,5KG  
BULBS: 5X G9 (3W) MATERIAL: BRASS & GLASS

Over the times, Royal families gathered in the most exclusive and luxurious events, where ostentation and opulence were represented through the décor. The Royal Collection incorporates the luxury and lavishness of the Royal Era. Composed of brass and glass, the different levels of this hand-made collection are a remarkable display of how a modern touch can elevate a traditional design.

FEATURED IN  
**MAISON & JARDIN,  
FRANCE**



# ROYAL



SUSPENSION 9167.100

DIMENSIONS: H.35CM - Ø.100CM WEIGHT: NET 40KG  
BULBS: 24X G9 (3W) MATERIAL: BRASS & GLASS



WALL LIGHT 9165.30

DIMENSIONS: H.50CM - W.30CM - D.15CM WEIGHT: NET 8,5KG  
BULBS: 6X G9 (3W) MATERIAL: BRASS & GLASS

TRIANGULAR  
GLASS



CHECK MORE PROJECTS WITH THE FEATURED DESIGN FROM PAGE: 168





PENDING 9160.40

DIMENSIONS: H.55CM - Ø.40CM WEIGHT: NET 20KG  
BULBS: 6X G9 (3W) MATERIAL: BRASS & GLASS

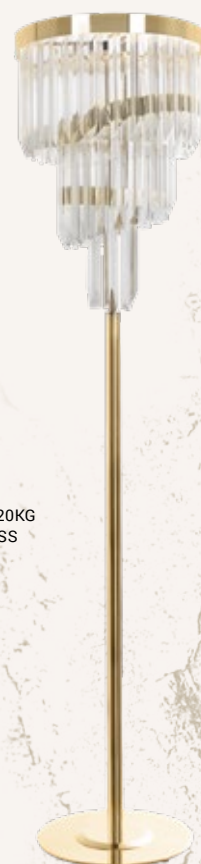


PROJECT BY: DOMOS DESIGN, RUSSIA



TABLE LAMP 9163.30

DIMENSIONS: H.50CM - Ø.30CM WEIGHT: NET 8KG  
BULBS: 3X G9 (3W) MATERIAL: BRASS & GLASS



FLOOR LAMP 9162.40

DIMENSIONS: H.170CM - Ø.40CM WEIGHT: NET 20KG  
BULBS: 6X G9 (3W) MATERIAL: BRASS & GLASS



CHECK MORE PROJECTS WITH THE FEATURED DESIGN FROM PAGE: 168

ALSO FEATURED BY CASTRO: SEDERE BAR CHAIR



## Zenith

The stunning natural beauty of Zenith Suspension is born from the intense shining star constellations presented in the celestial sphere. The name itself represents the peak of life where one becomes serene with its self-being. Highlighting the natural shape of a group of stars forming this minimalistic but strong-will suspension.

SUSPENSION 9900.160X70

DIMENSIONS: H.48CM - L.164CM - W.70CM WEIGHT: NET 18KG  
BULBS: 20X G9 (3W) MATERIAL: BRASS



SUSPENSION

SPACIUM

MODERN COLLECTION



ALSO FEATURED BY CASTRO: HALMA WALL LIGHT + BLOSSOM STOOL

## Spacium

Spacium, the Latin word for "space", is an exceptionally elegant collection, as it reflects the power and grandeur its name offers. Only composed of crystals, it reflects the light in a very specific and singular way, imposing a dynamic look to the interior. The sleek detailing adds visual richness and creates a concept of magnificence and unique beauty, evoking strong joyful sensations.



SUSPENSION 9190.100

DIMENSIONS: H.10CM - Ø.100CM WEIGHT: NET 23KG  
BULBS: 24X G9 (3W) MATERIAL: BRASS & CRYSTAL



SPACIUM



ALSO FEATURED BY CASTRO: FLUSSO DINING TABLE + MARIE CHAIR + AMMIRA MIRROR





SUSPENSION 9190.170X40

DIMENSIONS: H.10CM - L.170CM - W.40CM WEIGHT: NET 38KG  
BULBS: 22X G9 (3W) MATERIAL: BRASS & CRYSTAL

LOTUS



ALSO FEATURED BY CASTRO: HALMA PENDANT LIGHT



*“The Lotus Collection aims to represent simplicity and splendor as its design and form are almost identical to the delicate lotus flower shape, incorporating its luxurious feel.”*

PRESTIGE, HONG KONG





# LOTUS



SUSPENSION 5917.60  
DIMENSIONS: H.80CM - Ø.60CM WEIGHT: NET 40KG  
BULBS: 18X G9 (3W) MATERIAL: BRASS & GLASS



FLOOR LAMP 5919.40  
DIMENSIONS: H.170CM - Ø.40CM WEIGHT: NET 25KG  
BULBS: 6X G9 (3W) MATERIAL: BRASS & GLASS

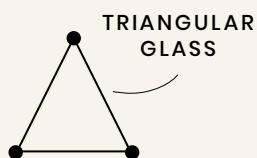


PENDANT 5917.40

DIMENSIONS: H.60CM - Ø.40CM WEIGHT: NET 20KG  
 BULBS: 6X G9 (3W) MATERIAL: BRASS & GLASS



PROJECT BY: CLÉ DE MAISON, LITHUANIA



## The Lotus Collection

The Lotus Collection aims to represent simplicity and splendor as its design and form are almost identical to the real flower's shape, incorporating its luxurious feel. The use of noble materials and valuable traditional manufacturing techniques makes this collection unique, as the 24k gold adorned arms with delicate glass increases the visual complexity. The glasses remind us of the calm falling petals from the flower that reflect its simplicity as well as shades of elegance and beauty.



TABLE LAMP 5918.25

DIMENSIONS: H.70CM - Ø.35CM WEIGHT: NET 15KG  
 BULBS: 3X G9 (3W) MATERIAL: BRASS & GLASS



# CONSTELLATION

SUSPENSION

MODERN COLLECTION

ALSO FEATURED BY CASTRO: METIER WALL LIGHT





SUSPENSION 9910.100

DIMENSIONS: H.200CM - Ø.100CM WEIGHT: NET 80KG  
BULBS: 96X G9 (3W) MATERIAL: BRASS, CRYSTAL & GLASS

## Constellation

This mesmerizing design brings you into the daydreaming state of mind, revealing the story about visionary luxury and fancy fantasy implemented from the classy sketch to the sophisticated chandelier. Impressive new lighting creation is the marriage of innovations, design creativity, and brass handcrafting perfection. Imagine the constellation in the night sky, freedom, and transparency. The Constellation suspension is composed of rotating stars figures adorned with falling raindrops spinning around the lighting design in the centre that shimmer in harmony through the delicate crystals. In addition to the magnificent crystal drops, the design has sharp crystals that contrast with the raindrops and allude to meteorite shape, as well as convey the impression of ice shards.



LABICS



*“The Labics Collection allows you to express yourself through lighting aesthetics and bold decoration.”*

DC MAGAZINE, RUSSIA



ALSO FEATURED BY CASTRO: MARIE CENTER TABLE (BIG & SMALL) + BLOSSOM STOOL + COLUMNS SHELF + AMMIRA MIRROR + STREAMLINE FLOOR LAMP



# LABICS

MODERN COLLECTION



SUSPENSION 9710.10

DIMENSIONS: H.160CM - W.140CM - D.150CM WEIGHT: NET 15KG  
BULBS: 10X G9 (3W) MATERIAL: BRASS & GLASS

ADJUST  
THE LAYERS



PENDANT 9710.2

DIMENSIONS: H.80CM - W.131CM WEIGHT: NET 3KG  
BULBS: 2X G9 (3W) MATERIAL: BRASS & GLASS

## Labics

The Labics Collection allows you to express yourself through lighting aesthetics and bold decoration. Dynamic lines create an organic movement of subtle brass tubes, as straight as arrows, completing the handmade design with elegant glass. Assembled with several brass tubes, it has a daring adjustable angularity. This futuristic lighting design symbolically portrays the development of modern design and urban architecture.



PENDANT | FLOOR

AVANY

MODERN COLLECTION

ALSO FEATURED BY CASTRO: PROJECTION BAR STOOL



BLACK NICKEL  
BRUSHED  
+  
24K GOLD

PENDANT 9570.25

DIMENSIONS: H.110CM - Ø.25CM  
(+ POLE HEIGHT - CUSTOMIZABLE ON PURCHASE)  
WEIGHT: NET 11KG BULBS: 6X G9 (3W) MATERIAL: BRASS



BLACK NICKEL  
+  
BLACK NICKEL  
MATTE



FLOOR LAMP 9571.6

DIMENSIONS: H.180CM - Ø.58CM WEIGHT: NET 18KG  
BULBS: 6X G9 (3W) MATERIAL: BRASS

## PLAY WITH UNIQUE FINISHES

+ MORE OPTIONS P.211

### The Avany Collection

The Avany Collection features long plated brass tubes in both rectangular and circular shapes. The mix of finishes gives the design a whole exclusive and charming look, setting another level by its distinctive appearance. Artistic design and daring innovative techniques make the unforgettable signature. This collection has its very own creative vision in lighting aesthetics: authenticity, freshness, and boldness.





*“Functional sophistication meets elegant simplicity.”*

ELLE DECOR



HAMMERED & CRYSTAL



PLAIN & MESH

SUSPENSION 9840.100

DIMENSIONS: H.5CM - Ø.100CM WEIGHT: NET 9KG  
BULBS: 24X G9 (3W) MATERIAL: BRASS & CRYSTAL

PLAY WITH  
UNIQUE  
TEXTURES  
& FINISHES

+ MORE OPTIONS P.197



HAMMERED  
TEXTURE



CANYON  
HAMMERED  
TEXTURE



PLAIN & CRYSTAL

### The Metis Collection

The Metis Collection represents the minimal luxury style. Sleek shapes along with crystals reveal a pure balance of delicacy and sophistication. Designed to bring a special allure and sensuality to your interiors. This design is a modern statement of self-expression that shines through with luxurious accents. An avant-garde spirit that combines both functional sophistication and elegant simplicity.

FEATURED IN  
ELLE DECOR  
INDIA



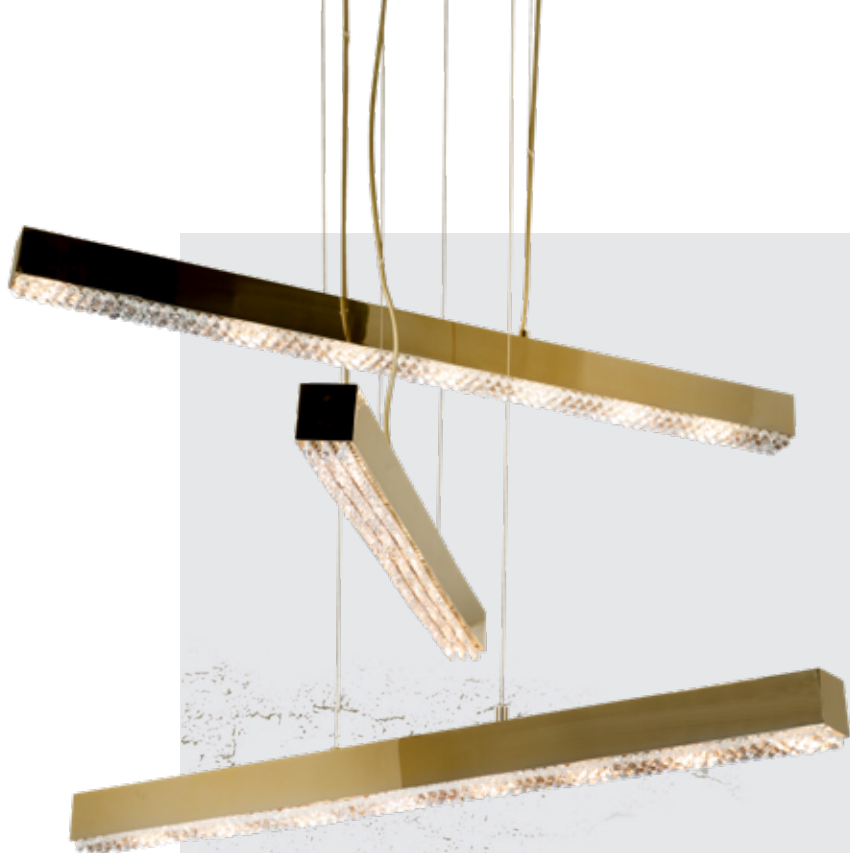


# METIS



MODERN COLLECTION

ALSO FEATURED BY CASTRO: CHARLOTTE ROUND TABLE + SUSAN CHAIR

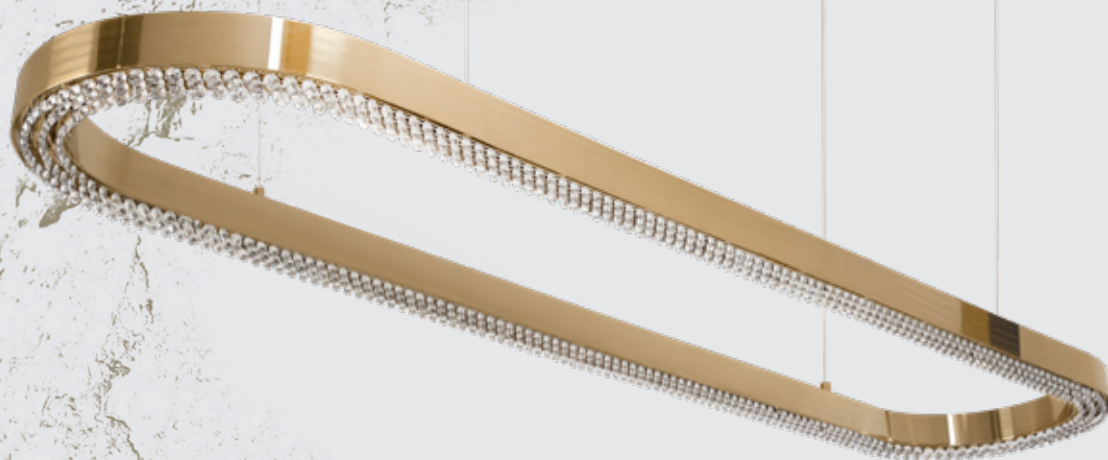


SUSPENSION 9640.3

DIMENSIONS: H.90CM - W.5CM - D.5CM (EACH PENDANT)  
BULBS: 24X G9 (3W) MATERIAL: BRASS & CRYSTAL



ALSO FEATURED BY CASTRO: PENELOPE BAR CHAIR



SUSPENSION 9640.170X40

DIMENSIONS: H.5CM - W.170CM - D.40CM WEIGHT: 15KG  
BULBS: 28X G9 (3W) MATERIAL: BRASS & CRYSTAL



# FLUSSO



MODERN COLLECTION



PENDANT 9290.40

DIMENSIONS: H.46CM - Ø40CM WEIGHT: NET 18KG  
 BULBS: 6X G9 (3W) MATERIAL: BRASS



WALL LIGHT 9291.40

DIMENSIONS: H.80CM - W.42CM WEIGHT: NET 18KG  
 BULBS: 4X G9 (3W) MATERIAL: BRASS

## The Flusso Collection

The constant change and movement of dancers was the story behind the designing of the Flusso Collection, as its gold-plated brass elements create a controlled yet organic silhouette, producing an involving flow as seen from different perspectives. This design inspires and empowers creativity and self-expression, granting spaces a charming and artistic breeze of light.



SUSPENSION 9290.4


DIMENSIONS: H.150CM - Ø.100CM WEIGHT: NET 120KG  
 BULBS: 33X G9 (3W) MATERIAL: BRASS



GALAXY



PROJECT BY: SVETLANA KRASILNIKOVA , UKRAINE



SUSPENSION 9110.170

DIMENSIONS: W.170CM - Ø.25CM, WEIGHT: NET 15KG  
BULBS: 18X G9 (3W)\* MATERIAL: BRASS & ACRYLIC

\*ONLY LED LAMPS CAN BE USED

## Galaxy

Energized by the natural wonder of spiral galaxies arose the Galaxy Collection. Its rounded forms handcrafted in gold-plated brass create an unpredictable effect granting this design an organic and exclusive shape. The perfect fit to complete audacious interior décors with the ultimate modern lighting statement that is intriguing and well-balanced.





# ARCADE



PROJECT BY: CLÉ DE MAISON, LITHUANIA

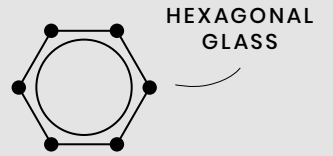


*“Noble brass and mesmerizing glass.”*

INTERIORES, SPAIN



# ARCADE



SUSPENSION 9880.150X40

DIMENSIONS: H.40CM - W.150CM - D.40CM WEIGHT: NET 48KG  
BULBS: 28X G9 (3W) MATERIAL: BRASS & GLASS

## The Arcade Collection

The Arcade Collection masterfully combines noble brass and mesmerizing glass. It creates an aerial atmosphere full of bright and playful amber rays of light. These opulent designs bring sensuality and a state of tender contemplative attitude and openness. A soft light that transmits delicacy and purity to every space. It is an intriguing lighting solution for the most demanding tastes as it places a particular emphasis on the décor.



FLOOR LAMP 9882.20

DIMENSIONS: H:165CM - Ø:40CM WEIGHT: NET 33.5KG  
BULBS: 12X G9 (3W) MATERIAL: BRASS & GLASS



SUSPENSION 9880.100

DIMENSIONS: H:40CM - Ø:100CM WEIGHT: NET 50KG  
BULBS: 36X G9 (3W) MATERIAL: BRASS & GLASS



WALL LIGHT 9881.40

DIMENSIONS: H:51CM - W:40CM - D:20CM WEIGHT: NET 9KG  
BULBS: 5X G9 (3W) MATERIAL: BRASS & GLASS

FEATURED IN  
INTERIORES,  
SPAIN





ARCADE

MODERN COLLECTION







FLOOR LAMP 9882.20

DIMENSIONS: H.165CM - Ø.40CM WEIGHT: NET 35KG  
BULBS: 12X G9 (3W) MATERIAL: BRASS & GLASS

CHOOSE YOUR FAVORITE COLOR



CRYSTAL GLASS

ANTHRACITE GLASS

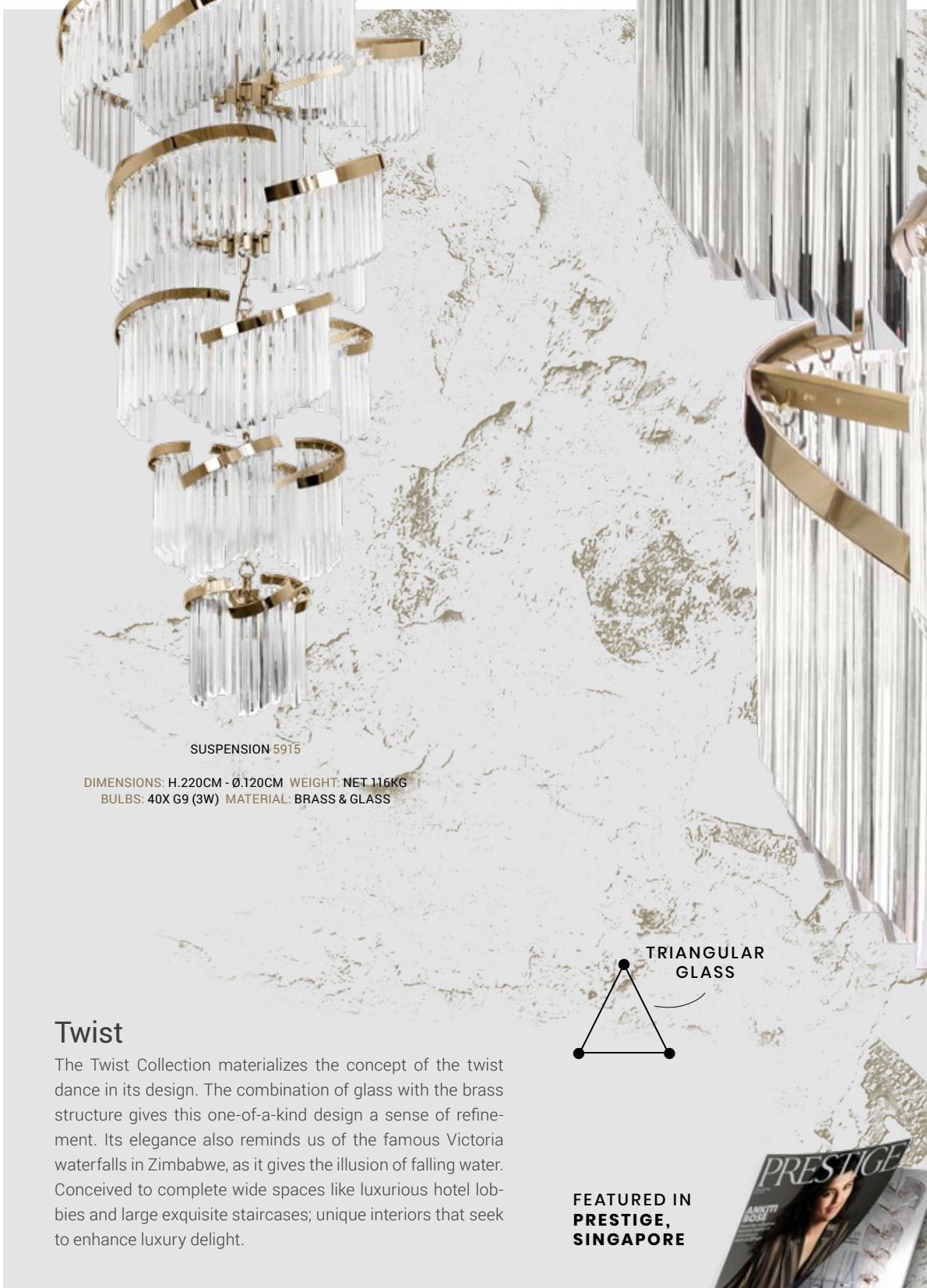
TOPAZ GLASS



# TWIST



PROJECT BY: ELENA BESEDINA, RUSSIA



SUSPENSION 5915

DIMENSIONS: H.220CM - Ø.120CM WEIGHT: NET 116KG  
BULBS: 40X G9 (3W) MATERIAL: BRASS & GLASS

TRIANGULAR  
GLASS



## Twist

The Twist Collection materializes the concept of the twist dance in its design. The combination of glass with the brass structure gives this one-of-a-kind design a sense of refinement. Its elegance also reminds us of the famous Victoria waterfalls in Zimbabwe, as it gives the illusion of falling water. Conceived to complete wide spaces like luxurious hotel lobbies and large exquisite staircases; unique interiors that seek to enhance luxury delight.

**FEATURED IN  
PRESTIGE,  
SINGAPORE**





G|O

PENDANT

MODERN COLLECTION

ALSO FEATURED BY CASTRO: PENELOPE BAR CHAIR



## Gio

Bringing inspiration from the Italian modernist architecture and design, the Gio Pendant Light was named after Gio Ponti, a worldwide reference for creating beautiful buildings across the world, always starting with geometric shapes and filling them with unexpected detailing inside. Resembling the light that we can see through building windows at night, the Gio Pendant has a geometric see-through that creates a unique light effect.

PENDANT 9890.1

DIMENSIONS: H.50CM - Ø.5CM WEIGHT: NET 2KG  
BULBS: 1X GU10 (6W) MATERIAL: BRASS

FEATURED IN  
**HOMES & GARDENS,  
GERMANY**



CHECK MORE PROJECTS WITH THE FEATURED DESIGN FROM PAGE: 168



BLAZE



CHECK MORE PROJECTS WITH THE FEATURED DESIGN FROM PAGE: 168

ALSO FEATURED BY CASTRO: VICTORIA CENTER TABLE

FEATURED IN  
INSPIRE DESIGN,  
USA



## Blaze

The Blaze Collection is a delicate display of Castro Lighting's modern handcrafting skills, composed by alternating pendants of gold-plated brass, prime glass, and light bulbs assembled by hand. It creates a blazing effect as the light bursts through the tiny breaches of space formed between them. A vigorous and extravagant design that will leave you wondering.

SUSPENSION 9610.150

DIMENSIONS: H.270CM - Ø.150CM WEIGHT: NET 185KG  
BULBS: 56X G9 (3W) MATERIAL: BRASS & GLASS



MASTERY



ALSO FEATURED BY CASTRO: CONSOLE + SPARTA TABLE LAMP (SMALL)



# PLAY WITH UNIQUE TEXTURES & FINISHES

+ MORE OPTIONS P.197

## The Mastery Collection

Mastery's powerful yet smooth lines create an organic movement of lights and shadows that suggest elegance and glamour. This sumptuous suspension handcrafted in gold plated brass will stand out in the most luxurious and exclusive interior décors.

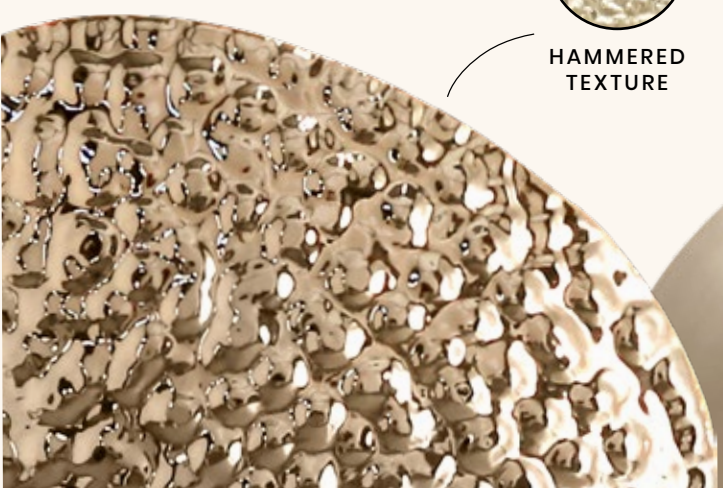


SUSPENSION 9301.80

DIMENSIONS: H.50CM - Ø.80CM WEIGHT: NET 20KG  
BULBS: 18X G9 (3W) MATERIAL: BRASS & CRYSTAL



HAMMERED  
TEXTURE





MASTERY







WALL LIGHT 9300.30 / 25 / 14

DIMENSIONS: H.30CM - W.23CM / H.25CM - W.19CM / H.14CM - W.11CM  
 WEIGHT: NET 1,5/ 0,6/ 0,3KG BULBS: 1X G9 (3W) MATERIAL: BRASS



WALL LIGHT 20.024

CREATE YOUR  
 ATMOSPHERE



WALL LIGHT 9300.190X70

DIMENSIONS: H.70CM - W.190CM WEIGHT: NET 20KG  
 BULBS: 15X G9 (3W) MATERIAL: BRASS & WOOD

## The Mastery Collection

Mastery's powerful yet smooth lines create an organic movement of lights and shadows that suggest elegance and glamour. These sumptuous design will stand out in the most luxurious and exclusive interior décors. The Mastery wall sconce can be implemented through a combination of the single wood base with the bespoke composition you prefer in all dimensions or independently in 3 module sizes (H30/H25/H14).

FEATURED IN  
**AD ITALY**



AVAILABLE IN HAMMERED, BRUSHED AND OXIDIZED FINISHES



# HALMA



PROJECT BY: JOÃO FERNANDES, PORTUGAL



*“The Halma Collection is a tribute to the fusion of noble materials and delicate geometry.”*

**INTERIORES, SPAIN**

The Halma Collection was designed to celebrate the fusion of noble materials, as well as simple and delicate geometry. Made with a structure of brass involved by clear crystal glass, this design unpredictably fuses the two materials in an effortless and original manner, granting it a cohesive and deluxe look. An extremely versatile fixture with exclusive beauty and elegance.

SUSPENSION 9620.80

DIMENSIONS: H.60CM - Ø.80CM WEIGHT: NET 40KG  
BULBS: 45X G9 (3W) MATERIAL: BRASS & GLASS



# HALMA



HEXAGONAL  
GLASS

SUSPENSION 9620.120X40

DIMENSIONS: H.60CM - W.120CM - D.40CM WEIGHT: NET 45KG  
BULBS: 36X G9 (3W) MATERIAL: BRASS & GLASS



ALSO FEATURED BY CASTRO: PENELOPE CHAIR

ALSO  
AVAILABLE



WALL LIGHT 9623.15  
DIMENSIONS: H.80CM - Ø.15CM  
BULBS: 12X G9 (3W) MATERIAL: BRASS & GLASS



WALL LIGHT 9621.20  
DIMENSIONS: H.60CM - W.20CM  
BULBS: 6X G9 (3W) MATERIAL: BRASS & GLASS



PROJECT BY: JOÃO FERNANDES, PORTUGAL

ALSO FEATURED IN  
**KITCHENS BEDROOMS  
& BATHROOMS, UK**





# HALMA



PROJECT BY: SUSSEX LIGHTING, UK



PROJECT BY: WAKEFIELDS JEWELLERS, UK



PENDANT 9620.1

DIMENSIONS: H.60CM - Ø.20CM WEIGHT: NET 3KG  
BULBS: 6X G9 (3W) MATERIAL: BRASS & GLASS



CHOOSE YOUR FAVORITE COLOR



CRYSTAL GLASS



ANTHRACITE GLASS



TOPAZ GLASS



ALSO FEATURED BY CASTRO: MARIE CONSOLE + COLOMBO SOFA

TABLE LAMP 9621.6

DIMENSIONS: H.65CM - Ø.23CM WEIGHT: NET 10KG  
BULBS: 6X G9 (3W) MATERIAL: BRASS & GLASS



# HALO



MODERN COLLECTION

ALSO FEATURED BY CASTRO: SEDERE CHAIR + CHARLOTTE DINING TABLE





SUSPENSION 9600.120

DIMENSIONS: H.32CM - Ø.120CM WEIGHT: NET 40KG  
BULBS: 28X G9 (3W) MATERIAL: BRASS



PENDANT 9600.20

DIMENSIONS: H.38CM - Ø.20CM WEIGHT: NET 3KG  
BULBS: 6X G9 (3W) MATERIAL: BRASS

*“The Halo Collection is a display  
of modern and minimal sophistication.”*

FALSTAFF LIVING MAGAZINE, AUSTRIA





# HALO



WALL LIGHT 9601.2

DIMENSIONS: H.32CM - W.11CM - D.15CM WEIGHT: NET 3KG  
BULBS: 2X G9 (3W) MATERIAL: BRASS



PROJECT BY: DOMOS DESIGN, RUSSIA



FLOOR LAMP 9604.6

DIMENSIONS: H.178CM - Ø.30CM WEIGHT: NET 13KG  
BULBS: 6X G9 (3W) MATERIAL: BRASS



PROJECT BY: ALDO MANZONI, ITALY



TABLE LAMP 9603.6

DIMENSIONS: H.67CM - Ø.20CM WEIGHT: NET 6KG  
BULBS: 6X G9 (3W) MATERIAL: BRASS

## The Halo Collection

Halos are rare and prized events of delicate beauty that occur when tiny ice crystals reflect the sun's light, creating splendid golden circles of light in the atmosphere.

The Halo Collection, made solely with gold-plated brass, is a display of modernity, designed for those who want a simple yet sophisticated lighting fixture without giving up neither charm nor refinement. An option that is the perfect addition for contemporary or modern interiors.



METIER

SUSPENSION | WALL



MODERN COLLECTION

ALSO FEATURED BY CASTRO: COLOMBO SOFA



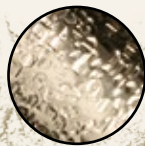


SUSPENSION 9590.1

DIMENSIONS: H.8CM - W.115CM WEIGHT: NET 4KG  
 BULBS: 2X G9 (3W) MATERIAL: BRASS & GLASS

### The Metier Collection

The Metier Collection personifies the CASTRO savoir faire of elegant lighting collections along with timeless allure. An imposing iconic design is its "métier". Being the beacon of pure light, this design is the embodiment of the ultimate luxury within its impressive commitment to sophisticated lighting design, integrity, and brass manufacture devotion.



CANYON  
 HAMMERED  
 TEXTURE

WALL LIGHT 9591.2

DIMENSIONS: H.115CM - D.8CM  
 BULBS: 2X G9 (3W) MATERIAL: BRASS & GLASS





PROJECT BY: ALENA CHASHKINA, RUSSIA

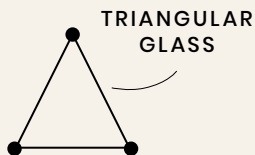
ALSO FEATURED BY CASTRO: ROYAL WALL LIGHT

SUSPENSION 9230.170X40

DIMENSIONS: H.55CM - W.170CM - D.40CM WEIGHT: NET 80KG  
BULBS: 18X G9 (3W) MATERIAL: BRASS & GLASS

## Kingdom

Inspired by the longest recorded reigns of any monarch of a sovereign country in European history, Louis' XIV, at a time when France was the leading European power, the Kingdom Collection transmits this idea of control and magnificence. This design aims to be the highlight of all home interiors as a striking piece, capable of creating a unique and exclusive atmosphere, where the light shines and spreads through the various glass elements.



CHECK MORE PROJECTS WITH THE FEATURED DESIGN FROM PAGE: 168

AVAILABLE IN BRUSHED AND OXIDIZED FINISHES



AVOLTO



PROJECT BY: MARINA PUTILOVSKAYA, RUSSIA

ALSO FEATURED BY CASTRO: MARIE CENTRE TABLE (SMALL & BIG)



PENDANT 9120.1

DIMENSIONS: H. 85CM - Ø. 7 CM WEIGHT: NET 2KG  
BULBS: 1X G9 (3W) (PER TUBE) MATERIAL: BRASS & CRYSTAL

*“The Avolto Collection is the celebration  
of simplicity, subtle sophistication,  
texture and clean lines.”*

**DC MAGAZINE, RUSSIA**

CHECK MORE PROJECTS WITH THE FEATURED DESIGN FROM PAGE: 168



# AVOLTO



PROJECT BY: MARINA PUTILOVSKAYA, RUSSIA



HAMMERED  
TEXTURE



WALL LIGHT 9121.4

DIMENSIONS: H.99CM - W.14CM - D.10CM WEIGHT: NET 4KG  
BULBS: 2X G9 (3W) (PER TUBE) MATERIAL: BRASS & CRYSTAL

## The Avolto Collection

The Avolto Collection is the ultimate expression of contemporary lighting style, designed to be an impressive and natural spotlight in the most demanding interior projects.

The gold-plated brass tubes are hammered by the hands of experienced craftsmen and adorned with clear crystals. Elegance, simplicity, subtle sophistication, texture, and clean lines define this charming design.

PLAY WITH  
UNIQUE  
TEXTURES  
& FINISHES

+ MORE OPTIONS P.197



TABLE LAMP 9122.4

DIMENSIONS: H.90CM - W.25CM WEIGHT: NET 9KG  
BULBS: 2X G9 (3W) (PER TUBE)  
MATERIAL: BRASS, CRYSTAL & MARBLE



AVOLTO



# TRIUMPH



MODERN COLLECTION

PROJECT BY: STUDIA 54, RUSSIA



WALL LIGHT 9342.130X20

DIMENSIONS: H.110CM - W.22CM WEIGHT: NET 8KG  
BULBS: 6X G9 (3W) MATERIAL: BRASS



# TRIUMPH

PENDANT | WALL | TABLE



SUSPENSION 9341.2

DIMENSIONS: H.8CM - W.100CM WEIGHT: NET 5KG  
BULBS: 2X G9 (3W) MATERIAL: BRASS



TABLE LAMP 3046.1

DIMENSIONS: H.62CM - Ø.40CM WEIGHT: NET 5KG  
BULBS N°1 | E27 (2W) MATERIAL: BRASS & LAMP SHADE FABRIC

MODERN COLLECTION

PLAY WITH  
UNIQUE  
TEXTURES  
& FINISHES

+ MORE OPTIONS P.197



HAMMERED  
TEXTURE



WALL LIGHT 9340.2

DIMENSIONS: H.85CM - W.11CM WEIGHT: NET 5,5KG  
BULBS: 2X G9 (3W) MATERIAL: BRASS



ALSO FEATURED BY CASTRO: MONDRIAN CONSOLE

## The Triumph Collection

The Triumph Collection, made solely with brass, is an expression of modern industrial design and a celebration of avant-garde handcrafting techniques. The design's warm light spreads across the surrounding space, making it ideal for a bedroom, hallway, restaurant, or even bar. Triumph sets trends and embellishes today's most prestigious interior projects, creating stylish vibes.

FEATURED IN  
G&G, ITALY







WALL LIGHT 9720.2

DIMENSIONS: H.60CM - W.9CM - D.11CM WEIGHT: NET 2KG  
BULBS: 2X GU10 (4W) MATERIAL: BRASS



PROJECT BY: AMBIENCE DESIGN, CZECH REPUBLIC



PENDANT LIGHT 9721.1

DIMENSIONS: H.60CM - Ø.9CM WEIGHT: NET 2KG  
BULBS: 2X GU10 (4W) MATERIAL: BRASS



PLAY WITH  
UNIQUE  
TEXTURES  
& FINISHES

+ MORE OPTIONS P.197



## The Elven Collection

The Elven charming collection arose from the enthusiasm and passion for the mythical world of Norse mythology. Elven gold wall light takes you on an exceptional and magical journey through the fantasy world. It resembles a beautifully balanced curve that twists like a shell, as its plated brass tube is bent and hammered by the hands of experienced craftsmen. This design represents modern simplicity with an elegant and luxurious touch.





PROJECT BY: EVADECO, LITHUANIA



PROJECT BY: LEMON DESIGN, ROMANIA



WALL LIGHT 9730.2

(INFORMATION PER TUBE)  
 DIMENSIONS: H.60CM - W.9CM - D.11CM WEIGHT: NET 2KG  
 BULBS: 2X GU10 (4W) MATERIAL: BRASS

## Nolan

The Nolan wall light represents the beauty of bespoke, showing the ultimate class in brass. Designed to be a delicate yet splendid highlight to the interior design project, it incorporates modern simplicity with an elegant and luxurious twist of art deco style. The clean and sleek lines of this modern wall lamp reveal a fresh take on contemporary refinement in lighting design. The handmade wall sconce resembles an exquisitely balanced curve that twists like a shell, as its gold-plated brass tube is bent by the hands of experienced craftsmen.

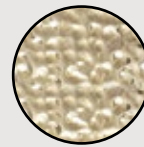


PROJECT BY: OPERA CONTEMPORARY, ITALY

## Riviera

The Riviera gold wall light takes you on a daydream journey of contemplating a beautiful painting on a wall of a French Riviera resort: just the right amount of light to make the ambiance feel exceptional and embracing.

Composed of a rectangular shaped gold-plated brass plate - hammered by hand with modern handcraft technics – placed in the center of a semi-circle that allows warm light to spread through a small space in between this wall light design.



HAMMERED  
TEXTURE



WALL LIGHT 9701.4

(INFORMATION PER TUBE)  
DIMENSIONS: H.56CM - W.18CM WEIGHT: NET 2KG  
BULBS: 4X G9 (3W) MATERIAL: BRASS

PLAY WITH  
UNIQUE  
TEXTURES  
& FINISHES

+ MORE OPTIONS P.197



STREAMLINE



PROJECT BY: ALEXANDER JAMES INTERIORS, UK



SUSPENSION 9270.100

DIMENSIONS: H.26CM - Ø.100CM WEIGHT: NET 45KG  
 BULBS: 18X G9 (3W) MATERIAL: BRASS

## The Streamline Collection

The Streamline Collection was conceived to be distinctive and to stand out for its design, becoming the perfect fit for curated interiors that combine a diversity of styles. Long gold-plated brass tubes give the design a whole exclusive and deluxe look, setting another level by its unique appearance. This recipe of rich materials and sleek lines inspired by art-deco architecture makes the Streamline collection desirable.



**FEATURED IN  
 HARPER'S BAZAAR  
 INTERIORS,  
 DUBAI UAE**

ALSO  
 AVAILABLE

SUSPENSION 9270.4

DIMENSIONS: H.90CM - Ø.100CM WEIGHT: NET 85KG  
 BULBS: 51X G9 (3W) MATERIAL: BRASS



CHECK MORE PROJECTS WITH THE FEATURED DESIGN FROM PAGE: 168



# STREAMLINE



ALSO FEATURED BY CASTRO: STREAMLINE WALL LIGHT + STREAMLINE FLOOR LAMP + MAEVE CEILING LIGHT



SUSPENSION 9270.150X40

DIMENSIONS: H.26CM - W.150CM - D.40CM WEIGHT: NET 52KG  
BULBS: 20X G9 (3W) MATERIAL: BRASS

ALSO  
AVAILABLE

SUSPENSION 9270.25

DIMENSIONS: H.26CM - Ø 25CM WEIGHT: NET 6KG  
BULBS: 6X G9 (3W) MATERIAL: BRASS



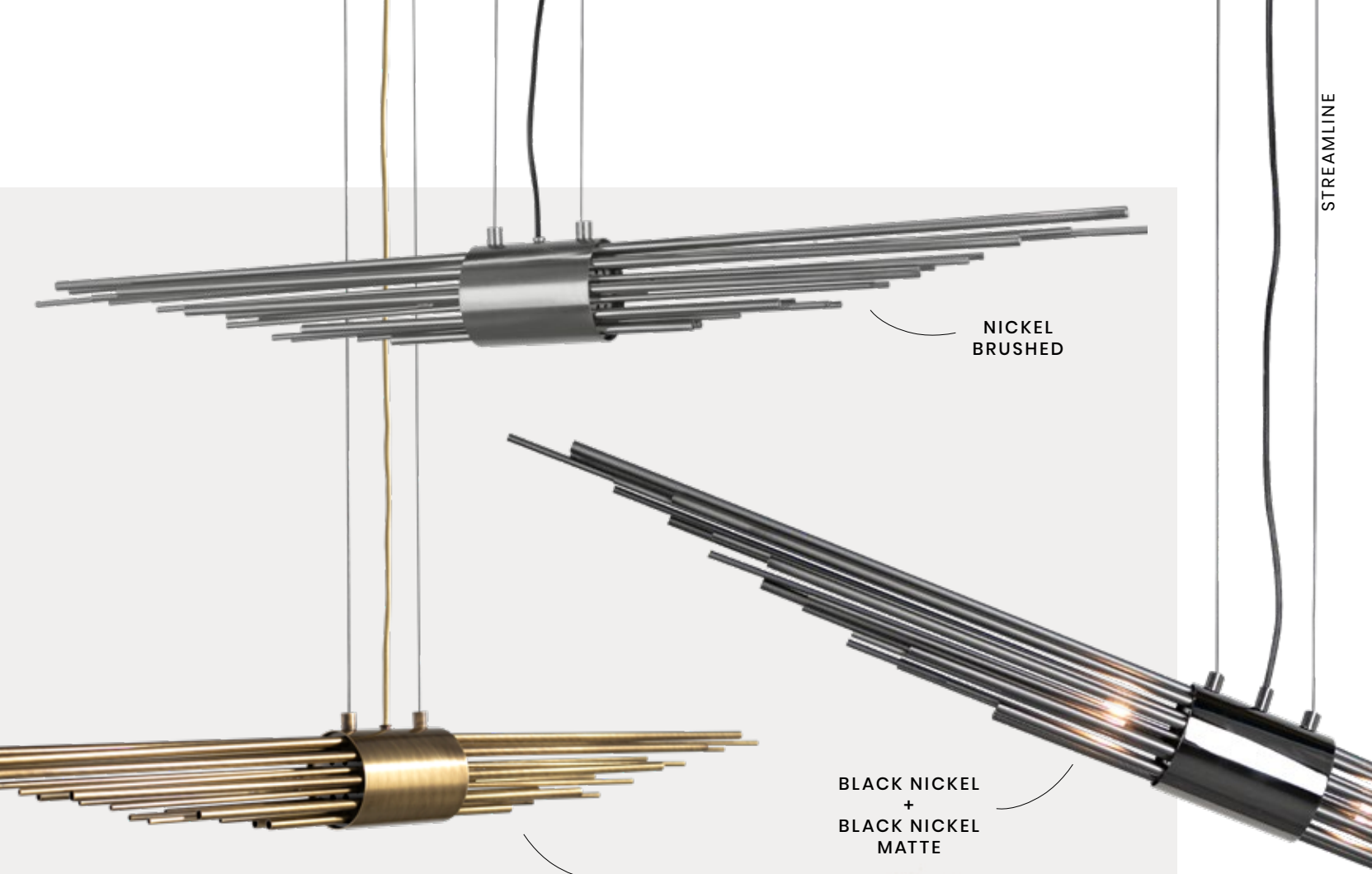
# STREAMLINE



WALL LIGHT 9271.2

DIMENSIONS: H.67CM - W.9CM WEIGHT: NET 3,5KG  
BULBS: 2X G9 (3W) MATERIAL: BRASS





NICKEL BRUSHED

BLACK NICKEL + BLACK NICKEL MATTE

OXIDIZED

SUSPENSION 9272.2

DIMENSIONS: Ø.9CM - W.100CM WEIGHT: NET 5KG  
BULBS: 2X G9 (3W) MATERIAL: BRASS



PROJECT BY: NINO ZVARKOVSKAYA, RUSSIA



PROJECT BY: ALEXANDER JAMES INTERIORS, UK



STREAMLINE



PROJECT BY: GIORGETTI SHOWROOM, PORTO

FLOOR LAMP 9270.10

DIMENSIONS: H.184CM - Ø.32CM WEIGHT: NET 20KG  
BULBS: 10X G9 (3W) MATERIAL: BRASS



TABLE LAMP 9270.5

DIMENSIONS: H.70CM - Ø.20CM WEIGHT: NET 8KG  
BULBS: 5X G9 (3W) MATERIAL: BRASS

ALSO  
AVAILABLE



TABLE LAMP 9274.2

DIMENSIONS: H.67CM - Ø.25CM WEIGHT: NET 10KG  
BULBS: 6X G9 (3W) MATERIAL: BRASS



TABLE LAMP 9273.1

DIMENSIONS: H.68CM - Ø.40CM WEIGHT: NET 8KG  
BULBS N°1 | E27 (2W)  
MATERIAL: BRASS & LAMP SHADE FABRIC

FEATURED IN  
**DECOR,**  
**BRAZIL**



PROJECT BY: OPERA CONTEMPORARY, ITALY



MONDRIAN



PROJECT BY: MOULAGE INTERIORS, UK



SUSPENSION 9180.80

DIMENSIONS: H.70CM - Ø.80CM WEIGHT: NET 30KG  
 BULBS: 18X G9 (3W) MATERIAL: BRASS & CRYSTAL

## The Mondrian Collection

Piet Mondrian is recognized for the purity of his abstractions since he radically simplified the elements of his paintings to reflect his perception of the world as opposites and asymmetry. This painter's unique artwork inspired the designers to develop the Mondrian Collection. Composed of geometrical squared shapes and cascading crystals, this design itself is an interpretation of dynamism and elegance.



FEATURED IN  
**DESIGN MARBELLA,**  
**SPAIN**



MONDRIAN



PROJECT BY: BOHEMIAN DESIGN, ROMANIA

ALSO FEATURED BY CASTRO: AVOLTO PENDANT LIGHT



SUSPENSION 9180.170X55

DIMENSIONS: H.74CM - W.170CM - D.55CM WEIGHT: NET 55KG  
BULBS: 24X G9 (3W) MATERIAL: BRASS & CRYSTAL



FEATURED IN  
**TOUCH MAGAZINE,**  
**UKRAINE**



MONDRIAN



MODERN COLLECTION

ALSO FEATURED BY CASTRO: MIA CHAIR ST + HARING TABLE



SUSPENSION 9183.80

DIMENSIONS: H. 40CM - Ø. 80CM WEIGHT: NET 23,5KG  
BULBS: 12X G9 (3W) MATERIAL: BRASS & CRYSTAL



WALL LIGHT 9182.4

DIMENSIONS: H. 40CM - W. 26CM WEIGHT: NET 4KG  
BULBS: 4X G9 (3W) MATERIAL: BRASS & CRYSTAL



WALL LIGHT 9182.6

DIMENSIONS: H. 58CM - W. 42,5CM - D. 15CM WEIGHT: NET 8KG  
BULBS: 6X G9 (3W) MATERIAL: BRASS & CRYSTAL



FEATURED IN  
**LUXURY HOME,  
RUSSIA**





*“Conceived to be a prestigious lighting solution due to its bespoke magnificence.”*

TRENDS MAGAZINE, USA

PROJECT BY: MOULAGE INTERIORS, UK



SUSPENSION 8864.2

DIMENSIONS: H.16CM - Ø.80CM + Ø.40CM (SECOND RING)  
 WEIGHT: NET 15KG BULBS: 21X G9 (3W)  
 MATERIAL: BRASS & CRYSTAL



SUSPENSION 8860.80

DIMENSIONS: H.7CM - Ø.80CM WEIGHT: NET 13KG  
 BULBS: 18X G9 (3W) MATERIAL: BRASS & CRYSTAL



WALL LIGHT 8861.40

DIMENSIONS: H.8CM - W.40CM - D.22CM WEIGHT: NET 2KG  
 BULBS: 2X G9 (3W) MATERIAL: BRASS & CRYSTAL

## The Maeve Collection

The Maeve Collection was named after the strong-willed, ambitious, and warrior-queen Maeve of Ireland, whose passion led warriors to fight for her beliefs. This design has an enormous value due to its bespoke quality and magnificence. Its gold-plated brass structure is hammered by the hands of experienced lighting artisans, as well as beautiful crystals are individually assembled by hand at the bottom.





SUSPENSION 8850.19

DIMENSIONS: H.265CM - Ø.80CM (Mix of different tube heights 24,36,48,60 CM)  
WEIGHT: NET 32KG BULBS: 19X G9 (3W) MATERIAL: BRASS & CRYSTAL

PENDANT 8852.24

DIMENSIONS: H.48CM - Ø.7CM (Available tube heights 24,36,48,60 CM)  
WEIGHT: NET 1KG BULBS: 1X G9 (3W) MATERIAL: BRASS & CRYSTAL





SAFI



SUSPENSION 8851.10

DIMENSIONS: H.55CM - Ø.80CM WEIGHT: NET 22KG  
BULBS: 10X G9 (3W) MATERIAL: BRASS & CRYSTAL



SUSPENSION 8859.9

DIMENSIONS: H.50CM - Ø.75CM WEIGHT: NET 13KG  
BULBS: 9X G9 (3W) MATERIAL: BRASS & CRYSTAL

PROJECTS BY: HAMADA ASHRAF, EGYPT



FLOOR LAMP 8855.3

DIMENSIONS: H.172CM - Ø.40CM WEIGHT: NET 12KG  
BULBS: 3X G9 (3W) MATERIAL: BRASS & CRYSTAL



PROJECT BY: FS INTERIOR, USA

## CREATE YOUR ATMOSPHERE

### The Safi Collection

The Safi Collection is ideal for large hallways, mezzanines, and long staircases, fitting in a wide variety of décors. Its design is a masterpiece with extravagant shapes capable of transforming every space into exquisite scenery.

The combination of several lighting pendants creates an intriguing lighting design where the details are a perfect balance.



WALL LIGHT 8854.4

DIMENSIONS: H.55CM - W.35CM - D.15CM WEIGHT: NET 4KG  
BULBS: 4X G9 (3W) MATERIAL: BRASS & CRYSTAL



TABLE LAMP 8856.1

DIMENSIONS: H.65CM - Ø.40CM WEIGHT: NET 3,5KG  
BULBS N°1 | E27 (2W)  
MATERIAL: BRASS & LAMP SHADE FABRIC





SUSPENSION

CRYSTALLINE



MODERN COLLECTION

ALSO FEATURED BY CASTRO: GRACE TABLE + SUSAN CHAIR





## Crystalline

The Crystalline Collection is transparent but graceful. It cherishes modesty, just as the modern design itself cultivates a sense of simplicity in every element. Round brass forms with clean sophisticated lines are the base of this design. Hanging crystals added to the bottom of the pieces turn them into a luxurious statement and bring the desirable pure feeling. With a delicate though divine look, the Crystalline is the ideal decorative lighting creation. It can be the perfect feature for any type of modern interior décor.

FEATURED IN  
**BRIDGE FOR  
DESIGN, UK**



SUSPENSION 9530.6

DIMENSIONS: H.300CM - Ø.40CM (H.37CM - Ø.12.5CM EACH PENDANT)  
WEIGHT: NET 15KG BULBS: 6X G9 (3W) MATERIAL: BRASS & CRYSTAL



CHANTEL



MODERN COLLECTION

SET YOUR  
FOCUS



ADJUSTABLE  
LAMP SHADE



TABLE LAMP 3055.1

DIMENSIONS: H.58CM - Ø.20CM | WEIGHT: NET 9KG  
BULBS: 1X G9 (3W) | MATERIAL: BRASS & MARBLE

PLAY WITH  
UNIQUE  
TEXTURES  
& MARBLES

+ MORE OPTIONS P.197/200

## Chantel

Chantel is a smooth symphony of shapes and geometry paired with precious materials and a sharp-lined structure. Having a duality idea in its design, this contemporary table lamp reflects its top and base like a mirrored image, granting a special magnetism to this piece. Its structure is made of glitzy brass allied with a cylindrical Estremoz white marble. The exceptionally elegant table lamp makes it easy to uplift the interior design with new aesthetic and decorative lighting.

FEATURED IN  
STYLE AT HOME,  
CANADA





SAVOYE



MODERN COLLECTION

*“This design is unparalleled in the elegance and tenderness it displays.”*

ID. INTERIOR DESIGN, UKRAINE

ALSO FEATURED BY CASTRO: MARIE ARMCHAIR

SET YOUR  
FOCUS

ADJUSTABLE  
LAMP SHADE

BLACK NICKEL  
+  
24K GOLD

FLOOR LAMP 9581.1

DIMENSIONS: H.160CM - W.90CM - D.25CM WEIGHT: NET 8KG  
BULBS: 1X E27 (2W) MATERIAL: BRASS & MARBLE

TABLE LAMP 9583.1

DIMENSIONS: H.75CM - W.75CM - D.24CM WEIGHT: NET 9,5KG  
BULBS: 1X E27 (2W) MATERIAL: BRASS & MARBLE

PLAY WITH  
UNIQUE  
TEXTURES  
& MARBLES

+ MORE OPTIONS P.197/200

## The Savoye Collection

The Savoye Collection bears the authentic name of the famous Villa Savoye, one of the greatest icons of modern architecture. This design is unparalleled in the elegance and tenderness it displays. It combines two different finishes in the layered brass, bringing a delicate charisma to the lampshades. A combination of roughness, fine detailing, and refined design perfectly fits mid-century modern or art deco interior styles.



ECLIPSE





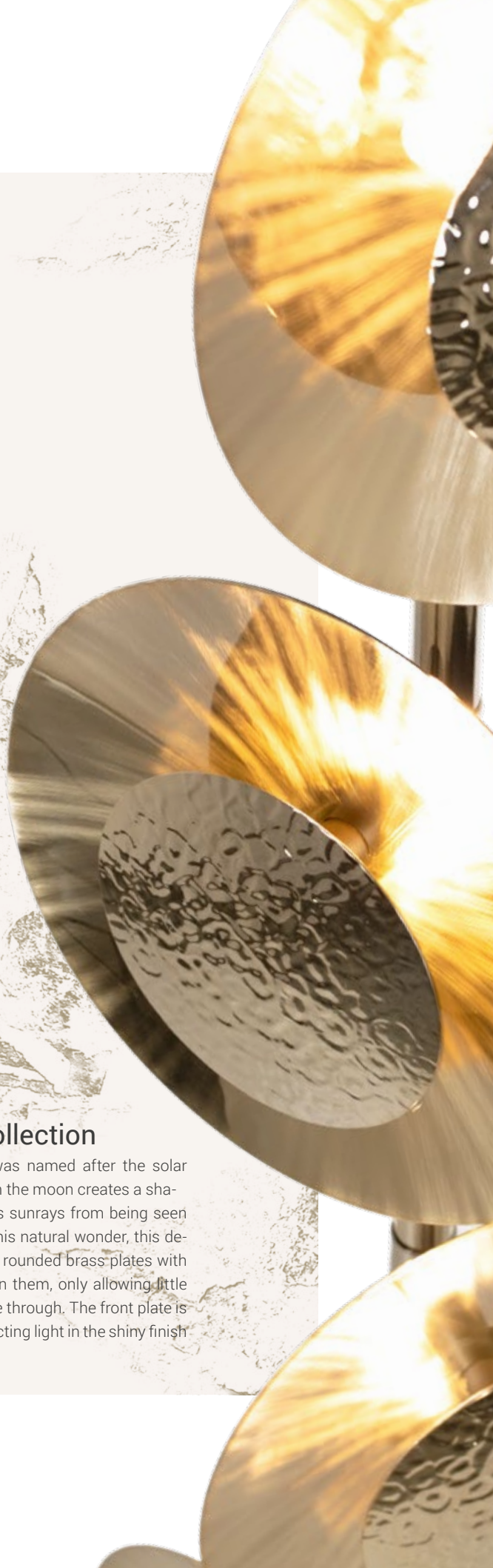


WALL LIGHT 9700.40

DIMENSIONS: Ø.40CM WEIGHT: NET 3,5KG  
BULBS: 3X G9 (3W) MATERIAL: BRASS

FLOOR LAMP 9703.4

DIMENSIONS: H.180CM - Ø.32CM WEIGHT: NET.15KG  
BULBS: 12X G9 (3W) MATERIAL: BRASS



## The Eclipse Collection

The Eclipse Collection was named after the solar eclipse phenomena when the moon creates a shadow that partially inhibits sunrays from being seen from Earth. Recreating this natural wonder, this design is composed of two rounded brass plates with a slight distance between them, only allowing little crescents of light to shine through. The front plate is hammered by hand, reflecting light in the shiny finish in the back.

FEATURED IN  
AD, ITALY





RAVEL







SUSPENSION 9020.80

DIMENSIONS: H.150CM - Ø.80CM WEIGHT: NET 8,5KG  
 BULBS: 6X G9 (3W) MATERIAL: BRASS & CRYSTAL

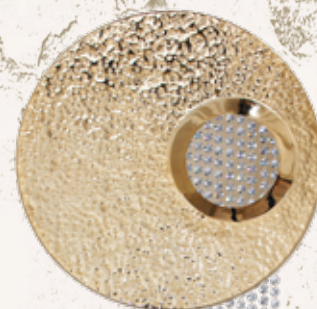
## The Ravel Collection

Maurice Ravel was a French composer and pianist, often associated with Impressionism. The Ravel Collection carries the same name and grandeur it offers, as it was created to be an elegant yet functional lighting solution. Stunning crystals emerge from the center of the delicately hammered gold-plated brass, allowing the light to spread to the surrounding space.



WALL LIGHT 9022.30

DIMENSIONS: Ø.30CM - D.6CM WEIGHT: NET 2KG  
 BULBS: 3X G9 (3W) MATERIAL: BRASS



WALL LIGHT 9021.50

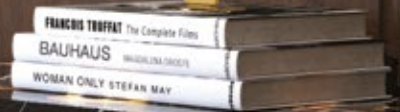
DIMENSIONS: H.75CM - W.50CM - D.6CM WEIGHT: NET 3KG  
 BULBS: 3X G9 (3W) MATERIAL: BRASS & CRYSTAL



# HOPPER

WALL

MODERN COLLECTION



ALSO FEATURED BY CASTRO: RIFT CONSOLE + NAUTILUS MIRROR



WALL 9901.2

DIMENSIONS: H.15CM - W.65CM - D.16CM - (TUBE ONLY - Ø.3,5CM)

WEIGHT: NET 2,5KG

BULBS: 4X G9 (3W) MATERIAL: BRASS



## Hopper

Made of gold-plated brass, this modern top light is the embodiment of finesse, complexity, and attention to detail. The admirable collection is designed for the most exquisite interiors and creative minds. Capture the attention of the guests with this handmade art light designed to fill interior projects with gracefulness. This art illuminating fixture can also be used to decorate luxurious bathrooms together with a mirror to shape a golden aura.







### Intense

The Intense suspension reveals the idea of magnificence and sculptural beauty, evoking the grandeur it offers due to its several rings composed of different sizes. Be visually inspired by this dazzling suspension ideal for wider living spaces, as it provides a gorgeous effect when you enter a room. All sleek details from this lighting creation add visionary richness to the pieces and make a difference in the surrounding ambiance.

SUSPENSION 9093.5

DIMENSIONS: H.150CM - Ø.120CM WEIGHT: NET 30KG  
 BULBS: 30X G9 (3W) MATERIAL: BRASS & CRYSTAL



PROJECT BY: S/S INTERIORS, VIETNAM

## Galilei

This bold statement piece is ideal for interior design projects that aim to leave a strong impression.

The unique mix of details is a guarantee that eyes will stop to contemplate while crossing this piece.

The Galilei suspension is the perfect fit for contemporary interior designs that combine strong pieces in harmonious interior décor.

SUSPENSION 9150.70

DIMENSIONS: H.70CM - Ø.70CM WEIGHT: NET 8,6KG  
BULBS: 12X G9 (3W) MATERIAL: BRASS & CRYSTAL



ALSO FEATURED BY CASTRO: HARING TABLE



## Hemera

Combining alternated layers of curved and straight gold-plated brass tubes, Hemera resembles stunning sun rays. This piece can integrate a multiplicity of interior styles, from coastal to contemporary, bohemian, art deco or midcentury modern, as well as residential and commercial spaces.

SUSPENSION 9520.90

DIMENSIONS: H.60CM - Ø.100CM WEIGHT: NET 35KG  
BULBS: 16X G9 (3W) MATERIAL: BRASS & CRYSTAL



PROJECT BY: E.F.INTERIORS, VIETNAM



### Madison

Due to the different hammered gold-plated brass tubes, this suspension is designed to perform in a way that pampers the eyes since the versatility of the Madison Collection is the key to making every project unique and personal. Each gold-plated brass tube from the piece is hammered by the hands of experienced craftsmen.

SUSPENSION 8820.9

DIMENSIONS: H.30CM - Ø.82CM WEIGHT: NET 12,5KG  
BULBS: 18X GU10 (5W) MATERIAL: BRASS



WALL LIGHT 8821.2

DIMENSIONS: H.30CM - W.9CM WEIGHT: NET 1,5KG  
BULBS: 2X GU10 (5W) MATERIAL: BRASS

PROJECT BY: CLOVE REPUBLIC, SRI LANKA

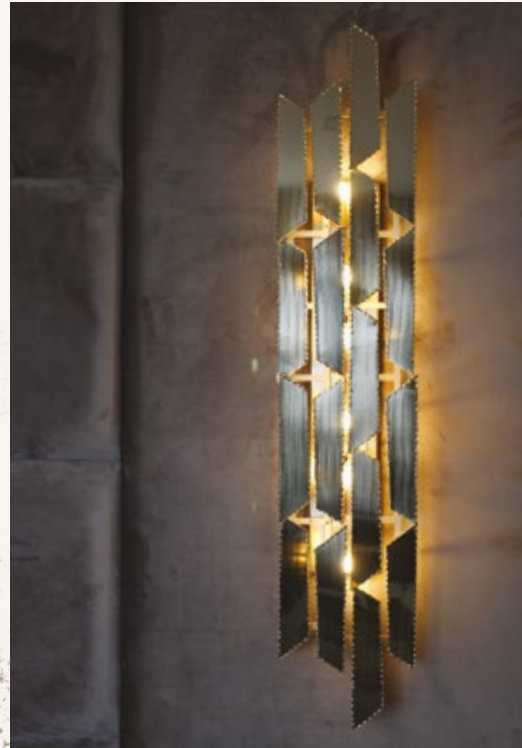


## Liberty

The asymmetric distribution of the geometric forms creates an unexpected visual effect as the Liberty wall light creates a surprising light spread on the walls. The use of the standard finish of gold-plated brass with the unusual geometric form makes this design a fundamental decorative piece. The luxury accents of the modern design combined with the traditional techniques reveal details executed with the utmost care. This lighting piece will transform contemporary interior designs into exclusive and stunning scenarios.

WALL LIGHT 9451.130X20

DIMENSIONS: H.130CM - W.20CM - D.10CM WEIGHT: NET 5,7KG  
BULBS: 6X G9 (3W) MATERIAL: BRASS



PROJECT BY: ALDO MANZONI, ITALY



## Euphoria

The Euphoria Suspension is a stylish lighting fixture perfect to complete a luxurious living room décor. It's ideal for wide living spaces as it can be combined in different units, complementing the interiors with the desired lighting ambiance. The different metal finishes available let the piece easily flow with different interior styles. Keeping high standards as for the quality and the visual, this suspension effortlessly fits in luxurious dining rooms, lavishing hotel rooms, and closets.

SUSPENSION 8940.80

DIMENSIONS: H.15CM - Ø.80CM WEIGHT: NET 16,5KG  
BULBS: 18X G9 (3W) MATERIAL: BRASS & CRYSTAL





# SPARTA

## SPARTA

The Sparta table lamp reminds the Greek culture as its lean details take a more delicate and classy look. A robust material, marble, is presented in a cylinder disrupted with gold-plated brass rings that confer grace and soften this bespoke piece. The elegant combination of these two materials results in exclusive details that will elegantly fit and enrich the most exquisite decorations.



FLOOR LAMP 3033.2

DIMENSIONS: H.175CM - Ø.46CM WEIGHT: NET 26KG  
 BULBS N°3 | E27 (2W)  
 MATERIAL: BRASS + MARBLE & LAMP SHADE FABRIC



TABLE LAMP 3033.1

DIMENSIONS: H.66CM - Ø.40CM WEIGHT: NET 9,5KG  
 BULBS N°1 | E27 (2W)  
 MATERIAL: BRASS + MARBLE & LAMP SHADE FABRIC



### PETRA

The "Rose City" of Petra was the inspiration for this collection as its design takes us to the temples and ancient richness. The Nero Marquina marble block in the center recalls an archeological stone, framed by a golden brass structure that confers a harmonious balance to the piece. This timeless design is the perfect decorative lamp capable of fitting in the most demanding decors and high-end projects.



TABLE LAMP 3044.1CR

DIMENSIONS: H.70CM - Ø.40CM WEIGHT: NET 7KG  
BULBS N°1 | E27 (2W)  
MATERIAL: BRASS + CRYSTAL ROCK & LAMP SHADE FABRIC



CRYSTAL  
ROCKS  
OR  
MARBLE

+ MORE OPTIONS P.198

ROTATING  
STRUCTURE





SATURN



MANHATTAN



TABLE LAMP 3048.1

DIMENSIONS: H.73CM - Ø.40CM WEIGHT: NET 7KG  
BULBS N°1 | E27 (2W) MATERIAL: BRASS & LAMP SHADE



LEATHER  
+  
24K GOLD

TABLE LAMP 3050.1

DIMENSIONS: H.74CM - Ø.40CM WEIGHT: NET 5KG  
BULBS N°1 | E27 (2W)  
MATERIAL: BRASS + LEATHER & LAMP SHADE FABRIC





# CRYSTAL COLLECTIONS

The avant-garde spirit of Castro Lighting led to the creation of exceptional lighting designs, where the use of crystals has played a key role in establishing the brand's design signature. Since 1978, the brand has kept up with the evolution of classic design tendencies and has been implementing modern accents and techniques to improve the design's distinctiveness and timelessness.

From very early on, the importance of crystal lighting started to be appreciated, and today, the brand's personality shines brighter through these breathtaking and exclusive design experiences, that diffuse everlasting elegance and beauty.

147	<b>LEVIEV</b>
151	<b>MYSTIC</b>
153	<b>GATSBY</b>
155	<b>ATLANTIDA</b>
157	<b>VARSOVIA</b>







PROJECT BY: ANDREY SAVELOV, RUSSIA

CHECK MORE PROJECTS WITH THE FEATURED DESIGN FROM PAGE: 168

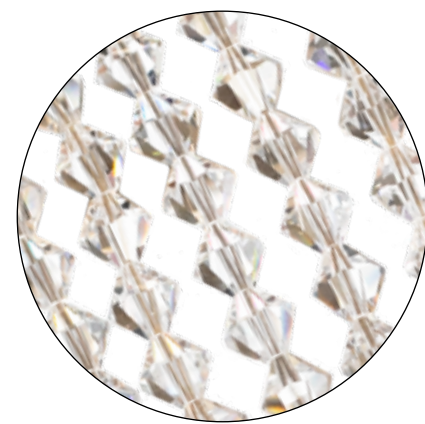




SUSPENSION 9850.80

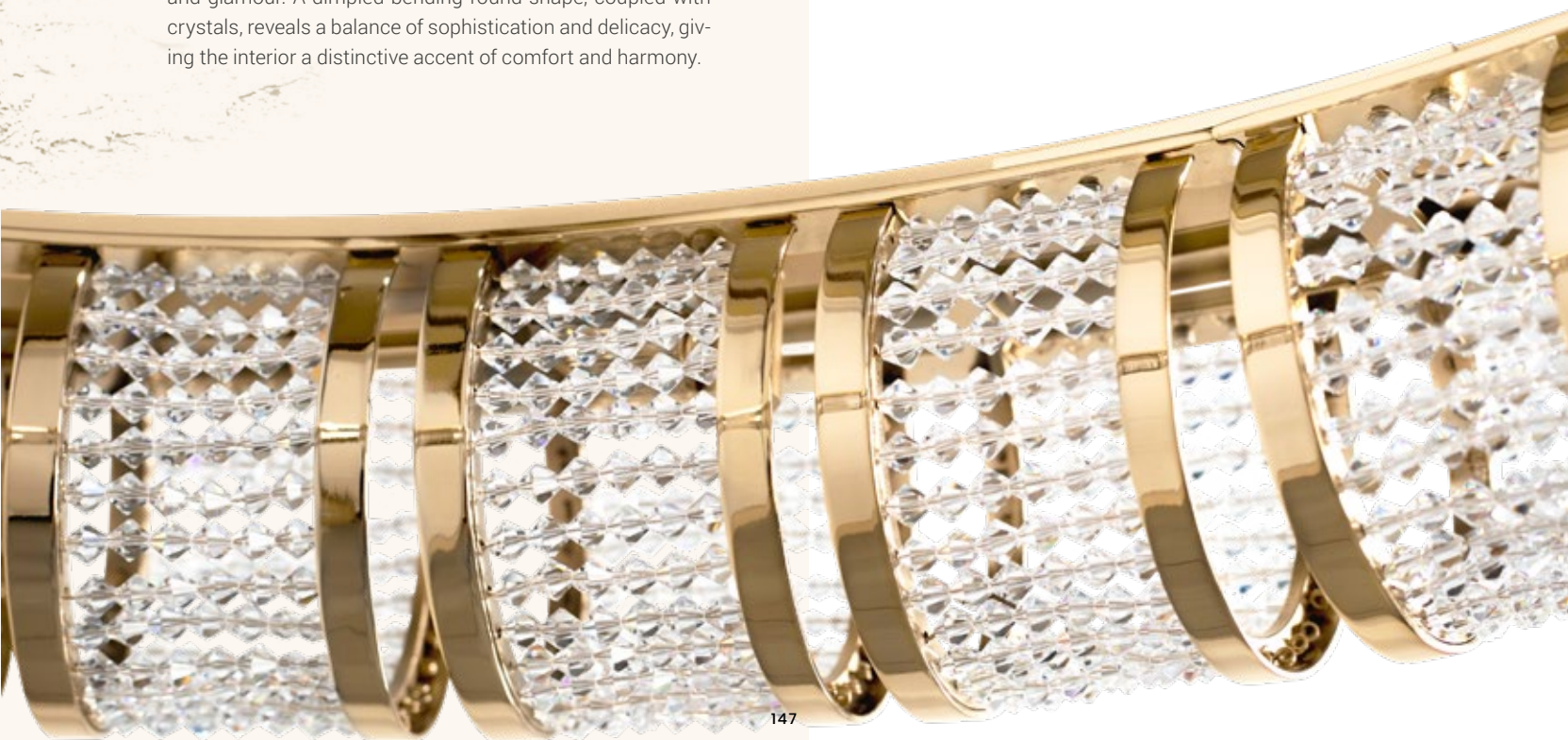
DIMENSIONS: H.10CM - Ø.80CM WEIGHT: NET 18KG  
BULBS: 12X G9 (3W) MATERIAL: BRASS & CRYSTAL

CRYSTAL BEADS



## Leviev

The Leviev handmade suspension was designed to be a stylish solution for any room. A contemporary lighting fixture with accents of Hollywood Glam and Mid-Century Modern interior styles, a great addition to complete the décor with elegance and glamour. A dimpled bending-round shape, coupled with crystals, reveals a balance of sophistication and delicacy, giving the interior a distinctive accent of comfort and harmony.









SUSPENSION 9183.80

DIMENSIONS: H. 40CM - Ø. 80CM WEIGHT: NET 23,5KG  
BULBS: 12X G9 (3W) MATERIAL: BRASS & CRYSTAL





# MYSTIC



CRYSTAL COLLECTION



PENDANT 5981.15

DIMENSIONS: H.25CM - Ø.15CM WEIGHT: NET 1,5KG  
 BULBS: 1X G9 (3W) MATERIAL: BRASS & CRYSTAL

## Mystic

Having spirituality, art, and transcendent events as inspiration, Mystic has the pure and light aesthetic. This Collection has several clear crystal strips that shape the round, slightly flattened structure. An unforgettable design that takes us to mystical stories and spiritual feelings while giving an imposing and majestic personality to all interiors.

SUSPENSION 5984.25

DIMENSIONS: H.225CM - Ø.120CM WEIGHT: NET 50KG  
 BULBS: 25X G9 (3W) MATERIAL: BRASS & CRYSTAL



GATSBY



CRYSTAL COLLECTION

ALSO FEATURED BY CASTRO: GATSBY WALL LIGHT



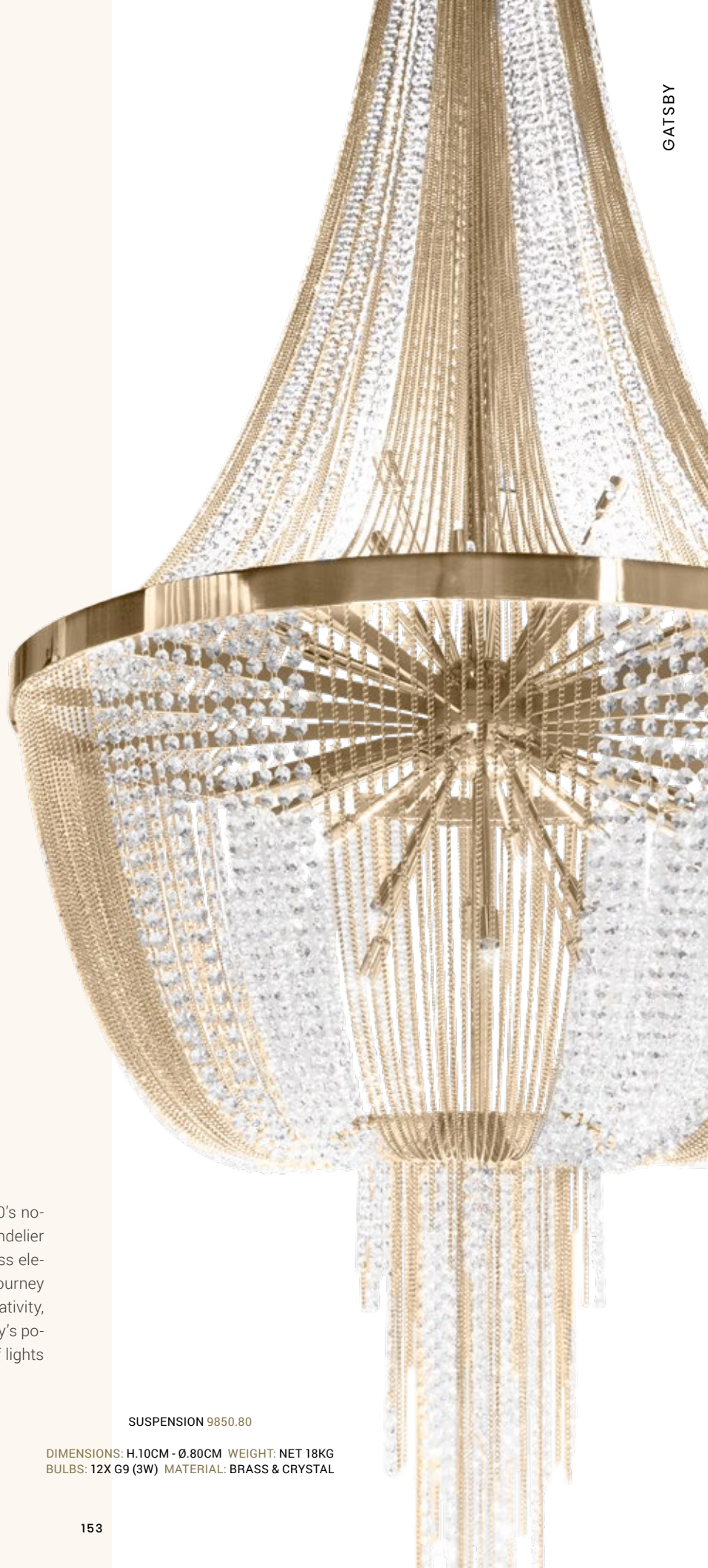


WALL LIGHT 9243.5

DIMENSIONS: H.95CM - W.40CM WEIGHT: NET 6,5KG  
BULBS: 5X G9 (3W) MATERIAL: BRASS & CRYSTAL

## Gatsby

The Gatsby Collection proudly bears the name of the 20's novel "The Great Gatsby" by F. Scott Fitzgerald. This chandelier features crystals as its main highlight coupled with brass elements of classical detailing. This design takes us on a journey back to the fascinating 20s, to social get-togethers, creativity, dancing, cultural dynamism, and unparalleled joy. Gatsby's powerful yet smooth lines create an organic movement of lights and shadows representing elegance and glamour.



SUSPENSION 9850.80

DIMENSIONS: H.10CM - Ø.80CM WEIGHT: NET 18KG  
BULBS: 12X G9 (3W) MATERIAL: BRASS & CRYSTAL



ATLANTIDA



CRYSTAL COLLECTION





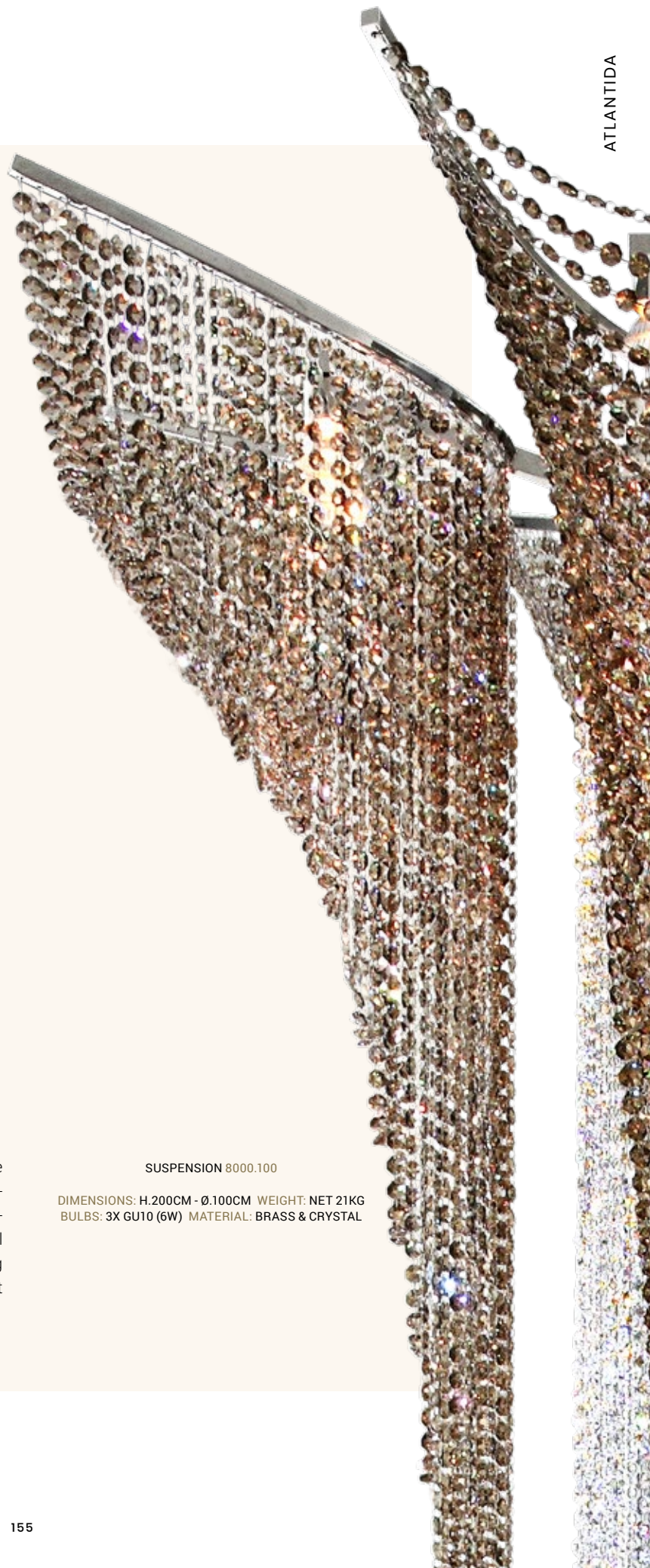
WALL LIGHT 8011.3

DIMENSIONS: H.80CM - W.44CM - D.25CM WEIGHT: NET 2,5KG  
 BULBS: 3X GU10 (6W) MATERIAL: BRASS & CRYSTAL



WALL LIGHT 8002.3

DIMENSIONS: H.93CM - W.25CM - D.30CM WEIGHT: NET 2KG  
 BULBS: 3X GU10 (6W) MATERIAL: BRASS & CRYSTAL



SUSPENSION 8000.100

DIMENSIONS: H.200CM - Ø.100CM WEIGHT: NET 21KG  
 BULBS: 3X GU10 (6W) MATERIAL: BRASS & CRYSTAL

## Atlantida

The Atlantida Collection was developed to achieve the perfect harmony between classic and contemporary interior styles. Combining high-quality hand-crafted brass and exquisite crystals, Atlantida is ideal for luxurious double floor staircases or stylish living rooms, being an unquestionable luxury statement that lends a prestigious character to any interior.



VARSOVIA



CRYSTAL COLLECTION

PROJECT BY: ANDREY SAVELOV, RUSSIA





SUSPENSION 3460.70

DIMENSIONS: H.35CM - Ø.70CM WEIGHT: NET 8,2KG  
 BULBS: 12X GU10 (6W) MATERIAL: BRASS & CRYSTAL

## Varsovia

Despite its singular design, this piece is extremely versatile, being perfect for practically any luxury house that may include art deco, modern art, mid-century modern, or contemporary art. This splendid suspension is very rich and complete. It is ideal for any space as it offers the right lighting solutions.



ALSO FEATURED BY CASTRO: TRIUMPH WALL LIGHT



# CLASSIC COLLECTIONS

In the beginning, Castro Lighting took its first steps in the lighting industry with classically styled chandeliers, taking advantage of the expertise and the long craftsmanship tradition of Portugal. Nowadays, the brand has several bestseller Classic Collections spread across the world and some of them are even part of the most magnificent and renowned interior design projects.

Classic style is inspired by the 18th and 19th century European décor, a timeless trend that displays elegance and lavishness, as well as elaborated silhouettes and exciting detailing. To bring this concept to life and create its own and renewed interpretation of classic luxury, Castro Lighting creates new designs each year, from suspensions to floor lamps, all characterized by the use of noble materials and valued traditional techniques.

Timeless influences are materialized in lighting collections that incorporate an elegant combination of refined materials, such as brass, marble, glass, and crystals. Each crystal is handled with love so that each reflection is never less than perfect. The outcome is true masterpieces with Venetian, Art Deco, and Hollywood glamour styles. Each space is awarded a delicate brightness and everlasting grace.

161 CASABLANCA  
163 TANGER  
165 VIENNA  
167 MARBELLA





# CASABLANCA



CLASSIC COLLECTION



SUSPENSION 5140.10

DIMENSIONS: H.60CM - Ø.105CM WEIGHT: NET 16KG  
BULBS: 12X E14 (4W) MATERIAL: BRASS & CRYSTAL



FLOOR LAMP 5149.3

DIMENSIONS: H.170CM - Ø.50CM WEIGHT: NET 7KG  
BULBS: 3X E14 (4W) MATERIAL: BRASS & CRYSTAL



WALL LIGHT 5146.2

DIMENSIONS: H.45CM - W.37CM WEIGHT: NET 3KG  
BULBS: 2X E14 (4W) MATERIAL: BRASS & CRYSTAL

## Casablanca

The Casablanca Collection embodies the 40's romantic drama directed by Michael Curtiz, granting it a mysterious, opulent, and classy sense. A design that imposes its majestic personality, taking us back to great stories and unforgettable memories through its complex detailing and harmonious balance of its gold-plated brass and crystals.



# TANGER



ALSO FEATURED BY CASTRO: STREAMLINE CONSOLE + LIMA WALL LIGHT



SUSPENSION 5100.16

DIMENSIONS: H.70CM - Ø.80CM WEIGHT: NET 13KG  
 BULBS: 16X E14 (4W) MATERIAL: BRASS & CRYSTAL



WALL LIGHT 5104.2

DIMENSIONS: H.40CM - W.35CM WEIGHT: NET 2KG  
 BULBS: 2X E14 (4W) MATERIAL: BRASS & CRYSTAL

## Tanger

Having the city of Tanger, Morocco as inspiration, the Tanger Collection represents the impact of different civilizations and cultures on the city's history. Being considered the ideal destination for diplomats, writers, and businessmen, the design evokes multiculturalism and design style influences that came along. The detailing of the design, as well as on the crystal plates, gives this piece a unique look, making it the perfect statement feature.





PROJECT BY: ELENA BESEDINA, RUSSIA





SUSPENSION 6175.18

DIMENSIONS: H.90CM - Ø.100CM WEIGHT: NET 20KG  
BULBS: 18X E14 (4W)  
MATERIAL: BRASS + CRYSTAL & LAMPSHADE FABRIC

## Vienna

The Vienna Collection immortalized the Vienna Opera, annually held since the 19th century, and maintains the sumptuousness and richness of the event conferred by the combination of brass with the magnificent crystals. The collection's alluring and subtle design creates a refined splendour, incorporating a timeless grandiosity full of lavish details.



# MARBELLA



PROJECT BY: DOMOS DESIGN, RUSSIA

ALSO FEATURED BY CASTRO: MARBELLA WALL LIGHT



SUSPENSION 6470.18

DIMENSIONS: H.85CM - Ø.90CM WEIGHT: NET 15KG  
 BULBS: 18X E18 (4W)  
 MATERIAL: BRASS + CRYSTAL & LAMPSHADE FABRIC



WALL LIGHT 6473.2

DIMENSIONS: H.50CM - W.35CM WEIGHT: NET 3KG  
 BULBS: 2X E18 (4W)  
 MATERIAL: BRASS + CRYSTAL & LAMPSHADE FABRIC

## Marbella

The classical collection of Marbella does justice to its name as the city and municipality Marbella in southern Spain. In order to give this collection a mysterious and classy touch, all details are worked in the most meticulous way. The detailing on the crystal beads on the different arms that compose this suspension, gives this piece a unique look, making it the perfect statement feature. This suspension brings out the existing balance between classical style and the unique look given by the crystal detailing, being the perfect lighting fixture to include in the most traditional interiors.





PROJECTS  
& PARTNERSHIPS



**ROYAL SUSPENSION, ROYAL WALL LIGHT**  
LOVE DESIGN, PORTUGAL





**STREAMLINE WALL LIGHT**  
DOMOS DESIGN, RUSSIA



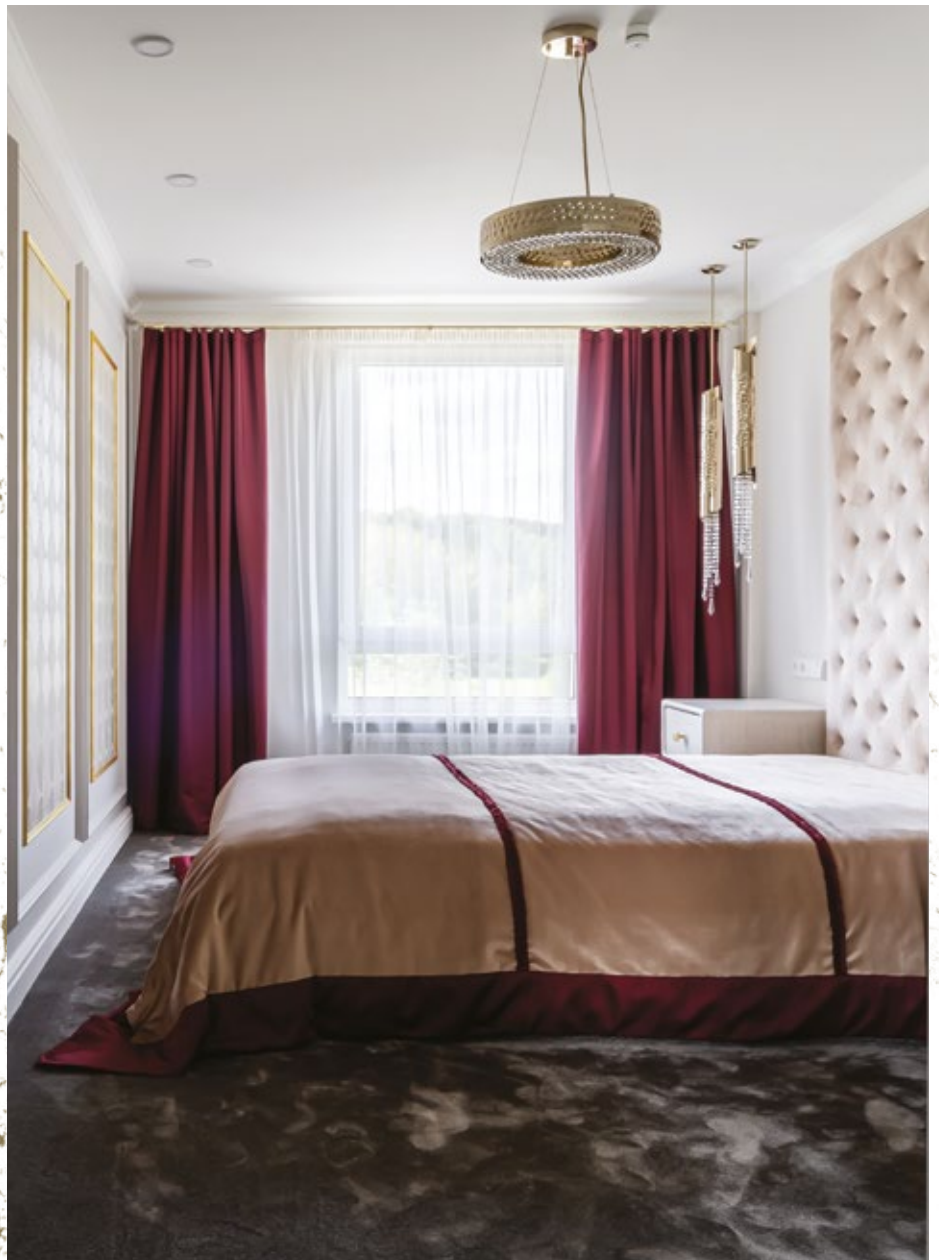
**METIS SUSPENSION**  
DOMOS DESIGN, RUSSIA



**SAFI SUSPENSION**  
STUDIA 54, RUSSIA



CREATING  
TIMELESS  
ELEGANCE  
SINCE 1978



MAEVE SUSPENSION + AVOLTO PENDANT  
CLÉ DE MAISON, LITHUANIA





**CUSTOM MONDRIAN SUSPENSION**  
PRIVATE PROJECT, PORTUGAL

ELEGANCE  
AND  
CHARM



**ROYAL WALL LIGHT**  
LOVE DESIGN, PORTUGAL



**STREAMLINE WALL LIGHT**  
NINO ZVARKOVSKAYA, RUSSIA





**ZENITH SUSPENSION**  
LEMON INTERIOR DESIGN, ROMANIA



**LEVIEV SUSPENSION**  
SARAH GARE, UK





ICONIC DESIGNS  
COUPLED WITH **BESPOKE**  
*INDIVIDUALITY* CREATE  
AN EXCLUSIVE SIGNATURE  
TO INTERIOR AESTHETICS



**GALAXY SUSPENSION**  
SVETLANA KRASILNIKOVA, UKRAINE





RIVIERA WALL LIGHT  
CLÉ DE MAISON, LITHUANIA



STREAMLINE SUSPENSION + WALL  
MEBLOLIGHT/FLOW INTERIORS, POLAND

A SERENE LIVING  
SPACE WITH  
A REFINED TWIST



**ROYAL PENDANT**  
HOTEL PARIS J'ADORE, FRANCE





**TWIST SUSPENSION**  
MEBLOLIGHT/FLOW INTERIORS, POLAND

MANIFESTING  
DREAMS  
THROUGH  
INTERIOR DESIGN

PROJECTS & PARTNERSHIPS



**RAVEL SUSPENSION**  
MEBLOLIGHT/FLOW INTERIORS, POLAND



ROYAL SUSPENSION, ROYAL WALL LIGHT  
ALENA CHASHKINA, RUSSIA





**RAINFOREST SUSPENSION**  
FS INTERIOR, USA





**MONDRIAN SUSPENSION + SPARTA TABLE LAMP**  
S/S INTERIORS, VIETNAM



**RAINFOREST SUSPENSION + STREAMLINE WALL LIGHT**  
S/S INTERIORS, VIETNAM

ELEVATING  
SETTING  
ALONGSIDE  
**LUXURY** LIGHTING  
DESIGN



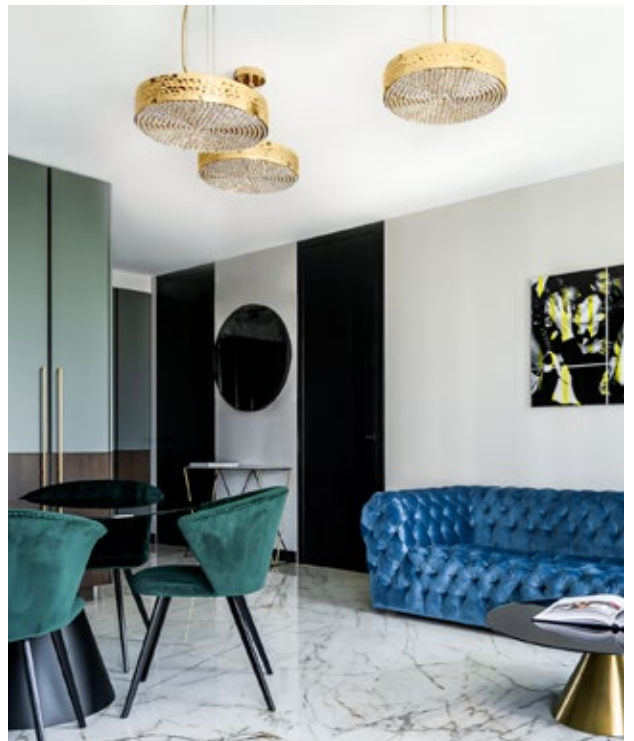
MIX & MATCH  
BRASS AND  
VELVET FOR A  
SOPHISTICATED  
LOOK



**STREAMLINE WALL LIGHT**  
SUSSEX LIGHTING, UK



**AUREA SUSPENSION**  
STUDIO VYDE, EGYPT



**MAEVE SUSPENSION**  
CLÉ DE MAISON, LITHUANIA





METIS SUSPENSION + MARIE CHAIR + PABLO SOFA + HARING SIDE TABLE + MONDRIAN CENTER TABLE  
THE GRAFTON HOTEL, IRELAND





GIO PENDANT  
SUKI SHOCKER, UK





**AVOLTO SUSPENSION**  
MARINA PUTILOVSKAYA, RUSSIA



**MONDRIAN WALL LIGHT**  
MARINA PUTILOVSKAYA, RUSSIA

GLAMOROUS  
ACCENTS OF  
GOLD-PLATED  
BRASS

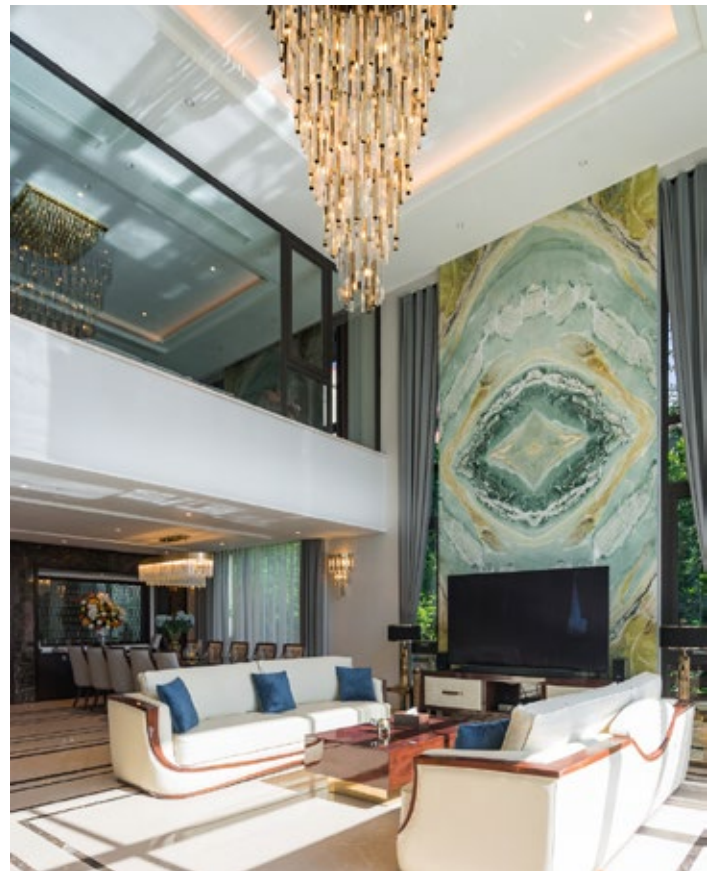




BLAZE SUSPENSION



AVOLTO PENDANT



BLAZE SUSPENSION



A STUNNING  
PRIVATE VILLA  
IN VIETNAM



KINGDOM SUSPENSION + SKYLAR WALL + MANHATTAN TABLE LAMP  
PROJECT BY CAM TU, VIETNAM





**STREAMLINE TABLE LAMP + WALL LIGHT + FLOOR LAMP**  
AMBIENCE DESIGN, CZECH REPUBLIC



**METIS SUSPENSION**  
VYBOR DESIGN, RUSSIA



BRASS  
MINIMALISM  
*MEETS*  
ALLURING  
CRYSTALS



**METIS SUSPENSION**  
DOMOS DESIGN, RUSSIA





STREAMLINE TABLE LAMP  
OPERA CONTEMPORARY, ITALY

**BOLD  
DECORATION  
IN LUXURIOUS  
INTERIORS**



STREAMLINE WALL LIGHT  
OPERA CONTEMPORARY, ITALY





**HALO SUSPENSION**  
ALEXANDER JAMES INTERIORS, UK



**ROYAL SUSPENSION**  
SHENYANG, CHINA





**HALMA SUSPENSION + HALMA PENDANT**  
ELIXIR DESIGN INTERIORS & MEIGER, UK



SHAPING  
BRASS INTO  
LIVEABLE  
ELEGANCE

**LEVIEV SUSPENSION**  
FS INTERIOR, USA



**TWIST SUSPENSION**  
INTERIOR MOTIVES, UK



**AUREA SUSPENSION**  
STUDIO VYDE, EGYPT





# TECHNICAL INFORMATION

## BULB SOCKETS

STANDARD BULB SOCKETS USED:

**E14**

**E27**

**G9**

**GU10**

LIGHTING PRODUCTS ARE COMPATIBLE WITH BULBS UP TO 40W.

## CABLES

STANDARD SIZE:

**1 METER**

(SUSPENSIONS AND PENDANTS)

DIFFERENT SIZES ARE AVAILABLE UNDER REQUEST.

## CHAINS

STANDARD LINKS:

**5 = 20 CENTIMETERS**

(SUSPENSIONS AND PENDANTS)

DIFFERENT NUMBER OF LINKS ARE AVAILABLE UNDER REQUEST.

## MEASURES

MEASURES OF CHANDELIERS, SUSPENSIONS  
AND PENDANT LIGHTS DO NOT INCLUDE CABLES.

MEASURES OF TABLE LAMPS INCLUDE LAMPSHADES.

## LACQUERED

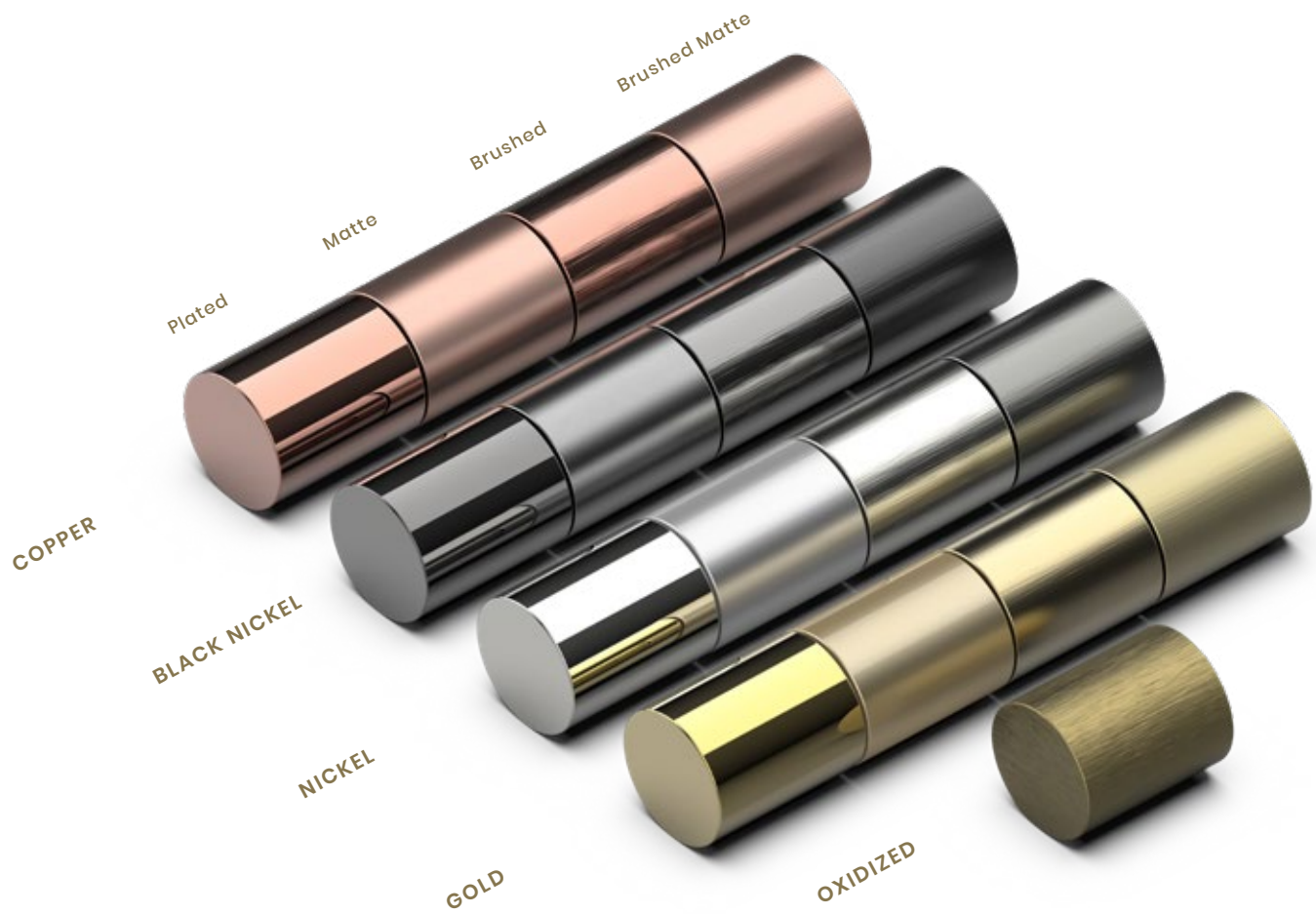
LACQUERED DESIGNS' COLORS CAN BE  
CUSTOMIZED ACCORDING TO THE RAL COLOR CHART.  
GLOSSY OR MATTE FINISH





# CUSTOMIZATION OPTIONS

# BRASS FINISHES



# TEXTURES



HAMMERED

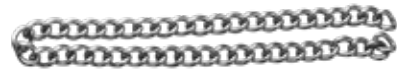


CANYON HAMMERED

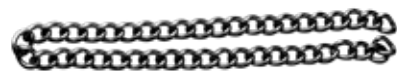
# CHAINS



GOLD



NICKEL



BLACK NICKEL



COPPER



# CRYSTALS

## CRYSTAL COATING COLORS



SATIN

AB

CLEAR

HONEY

GOLDEN SHADOW

## CRYSTAL ROCKS



012 001 METSI



012 280 NUT



012 280



THE MATERIALS PRESENTED REQUIRE CONFIRMATION OF AVAILABILITY

# GLASS COLORS

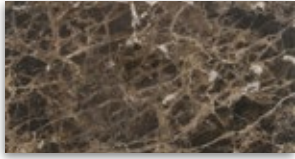


CUSTOMIZATION OPTIONS FOR ARCADE AND HALMA COLLECTIONS ARE AVAILABLE  
IN ANTHRACITE, CRYSTAL, AND TOPAZ.



# MARBLES

MANY OTHER MARBLE OPTIONS ARE AVAILABLE UNDER REQUEST.



EMPERADOR



MARQUINA



ESTREMOZ



CARRARA



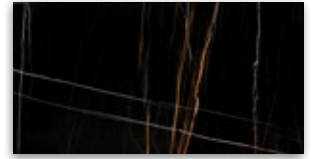
KENYA BLACK



GUATEMALA



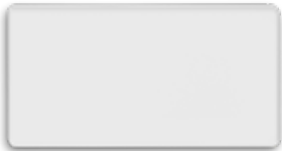
TRAVERTINO



SAHARA NOIR

# LACQUERED COLORS

ALL RAL CHART COLORS AVAILABLE UNDER REQUEST. GLOSSY OR MATTE FINISH.



WHITE LACQUERED



GOLD LACQUERED



BLACK LACQUERED

# ELECTRIC WIRES



GOLD



BLACK



GREY



TRANSPARENT



WHITE CORD



BLACK CORD

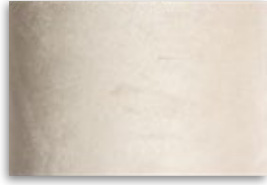
THE MATERIALS PRESENTED REQUIRE CONFIRMATION OF AVAILABILITY

# LAMPSHADE FABRICS

## TEXTURED FABRICS



SEAMS OF GREY



NUDE PEACH



BLACK RIBBED



SYNTHETIC BROWN

## ORGANZA



BLACK



BEIGE



WHITE

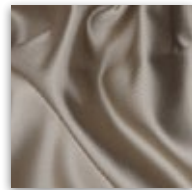
## SATIN



WHITE



BEIGE



CAFE LATTE



GREY





# CASTRO LIGHTING

HANDCRAFT EXPERTS  
SINCE 1978

[WWW.CASTROLIGHTING.COM](http://WWW.CASTROLIGHTING.COM)

[INFO@CASTROLIGHTING.COM](mailto:INFO@CASTROLIGHTING.COM)



PRODUCTS MANUFACTURED ACCORDING THE EUROPEAN NORM OF SECURITY EN 60 598-1



PRODUCTS ADJUSTED FOR INSTALLATION IN SURFACES NORMALLY INFLAMMABLE



PRODUCTS OF CLASS II. THE ELECTRIC ISOLATION IS DOUBLE OR REINFORCED



PRODUCTS WITH THE POSSIBILITY OF INSTALLATION OF LOW-ENERGY CONSUMPTION BULBS

Castro Lighting reserves the right, without prior notice, to discontinue collections, products or change specifications and prices on products. Castro lighting is free to commit any design changes without prior notice so measures and sizes must always be confirmed. The sizes indicated in the catalogue are only approximate, therefore, a small difference is always to be expected. The colours and images reproduced in print are only indicative and may vary from the original products.



TEL: +351 224 853 170 | FAX: +351 224 895 378 | MOB: +351 916 164 630

2022 EDITION

HANDCRAFT EXPERTS  
SINCE 1978

[WWW.CASTROLIGHTING.COM](http://WWW.CASTROLIGHTING.COM)